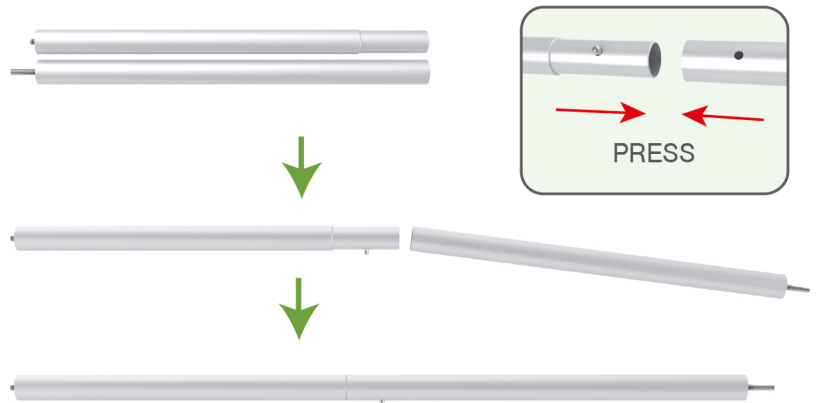
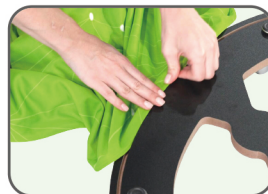


★ One Tool (Hex Wrench) **STEPS****(1) Straight Support Poles****(2) Top MDF Board, Bottom MDF Board, Acrylic Boards****(3) Printed Graphic Fabric Banner****STEP 01**

Connect straight support poles by pressing knobs to lock.

**STEP 02**

Insert fabric banner into bottom MDF board's slot and turn it over.



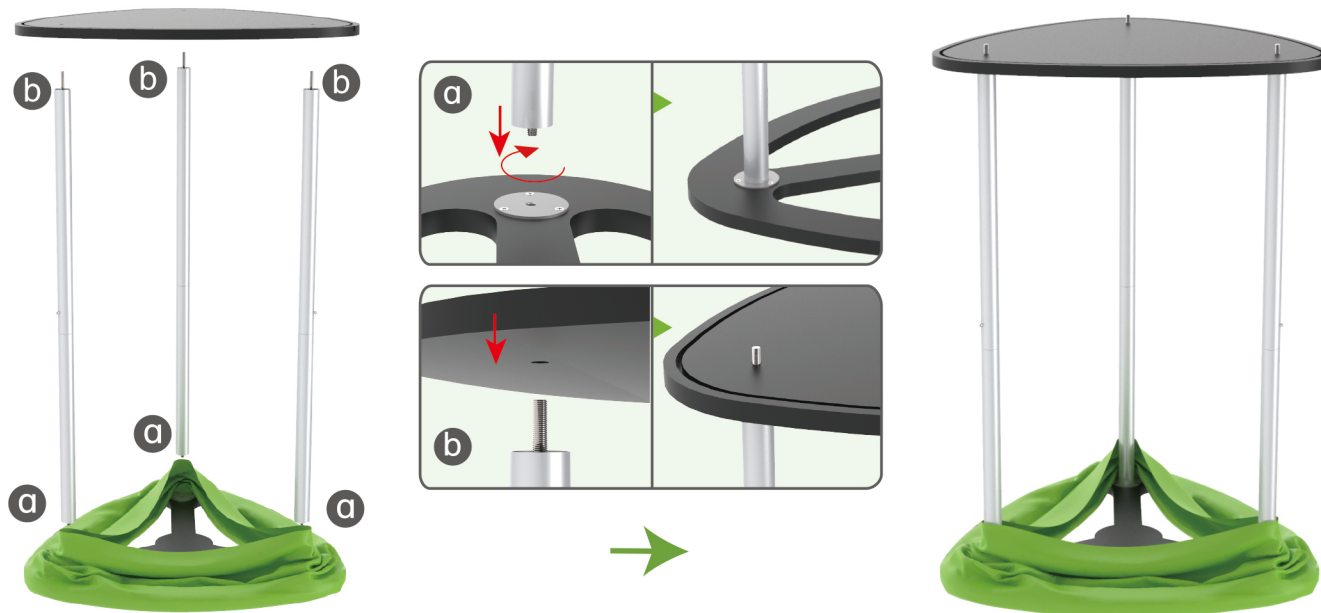
PRESS



## STEPS

## STEP 03

Screw straight support poles in bottom MDF board's threaded holes and place top MDF board on them.



## STEP 04

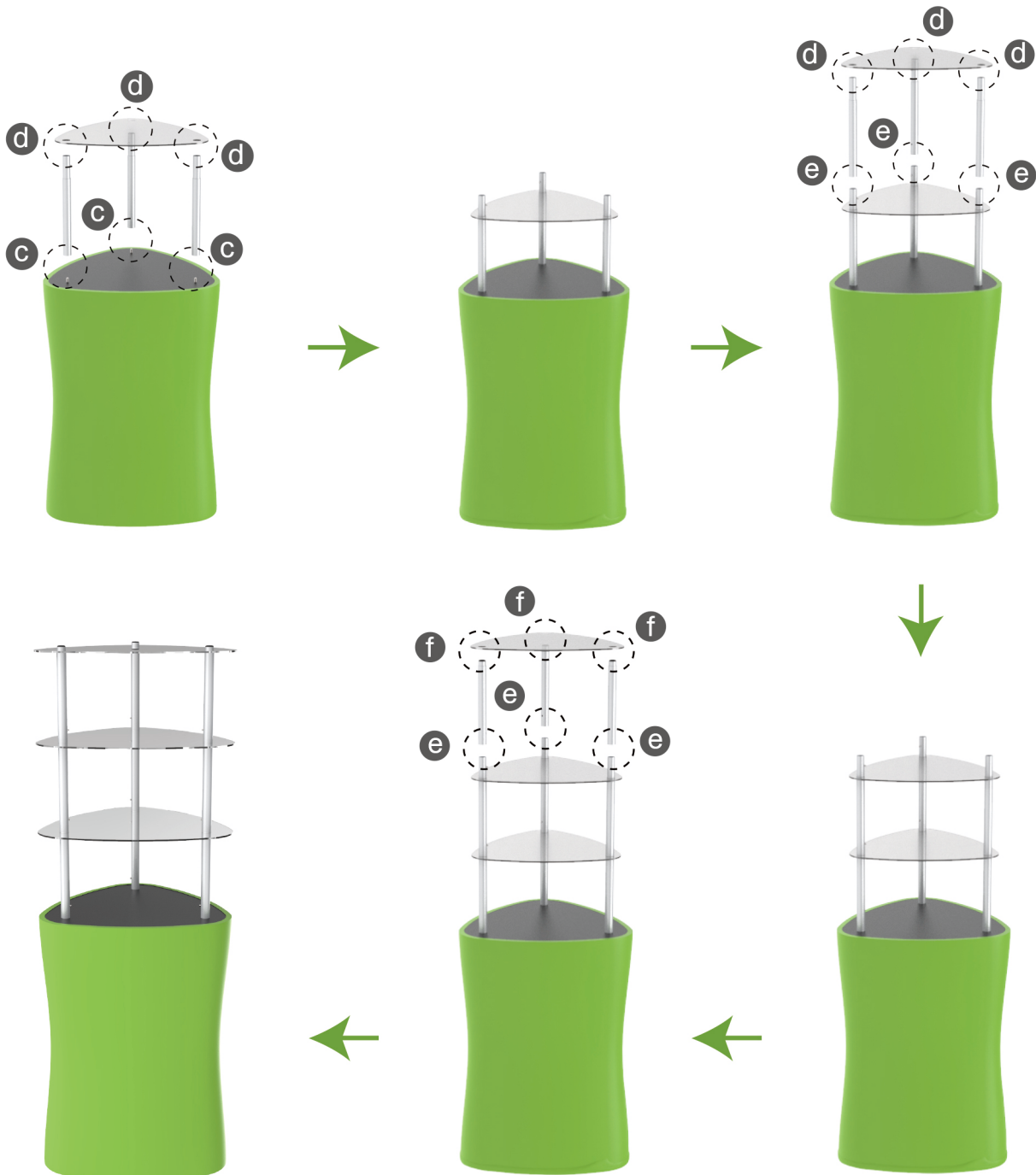
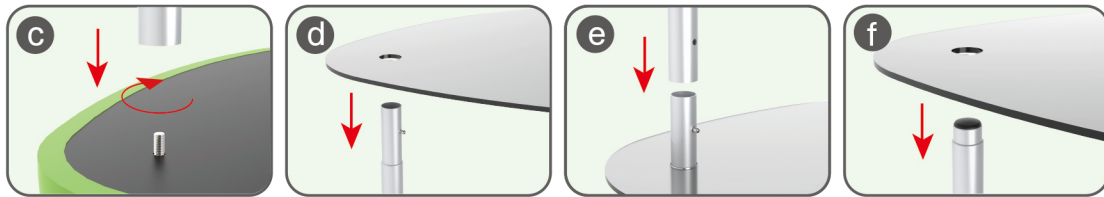
Pull fabric banner from bottom to top and insert into top MDF board's slot.



## STEPS

## STEP 05

Screw straight support poles with threaded holes filled onto nuts and place acrylic boards on them layer by layer.



### STEPS



DT-S-02



DT-S-01



DT-S-03