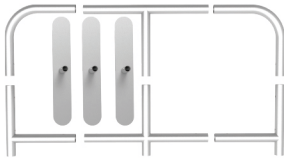


STEPS

(1) Hardware



x3



x4

(2) Printed Graphic Fabric Banner



STEP 01

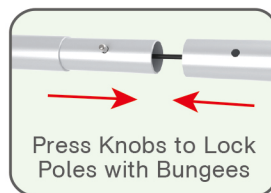
Connect to make long poles according to labelings.



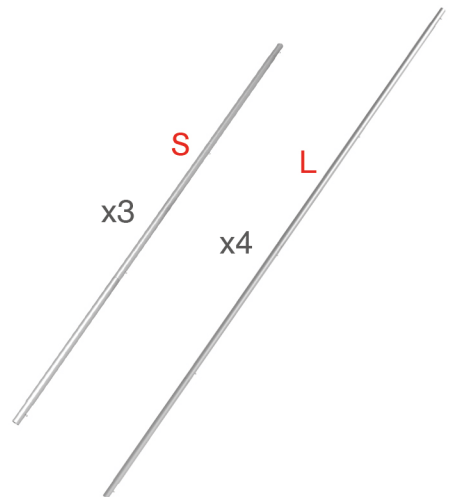
x3



x4

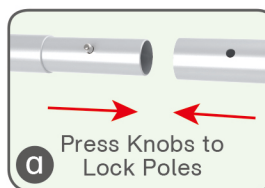


Press Knobs to Lock
Poles with Bungees

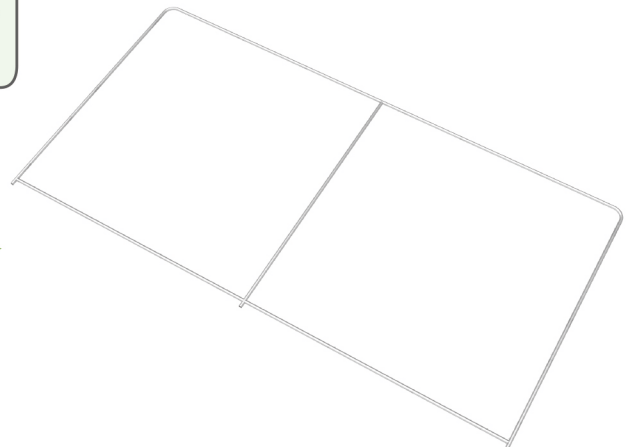
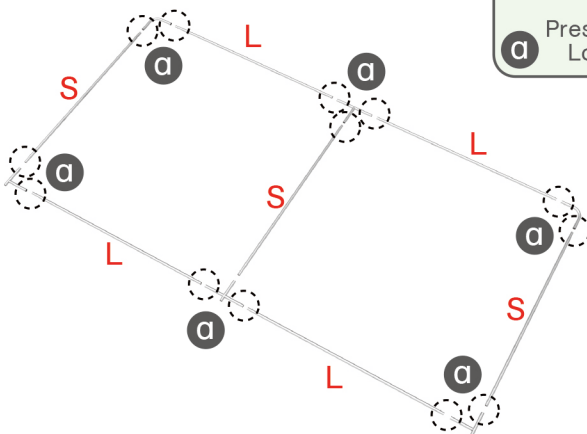


STEP 02

Connect long poles with corner poles according to labelings.



Press Knobs to
Lock Poles



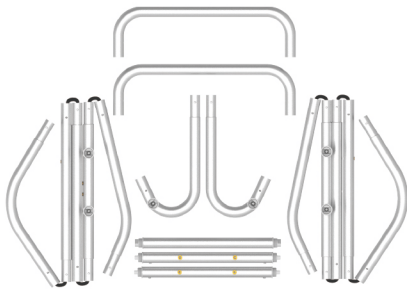
STEPS

STEP 03

Slide fabric banner on frame from top and zip up at bottom.



(1) Hardware

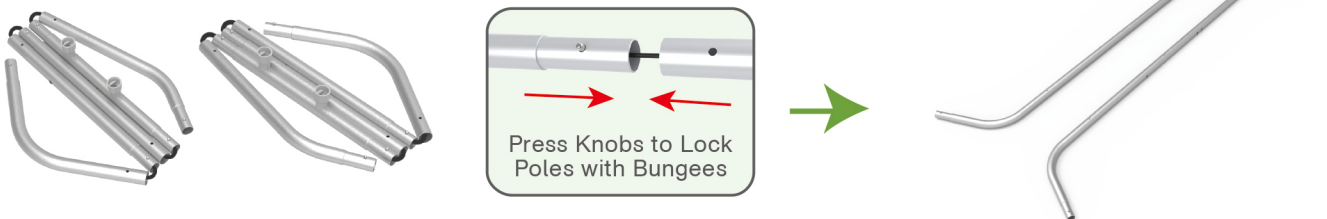


(2) Printed Graphic Fabric Banner



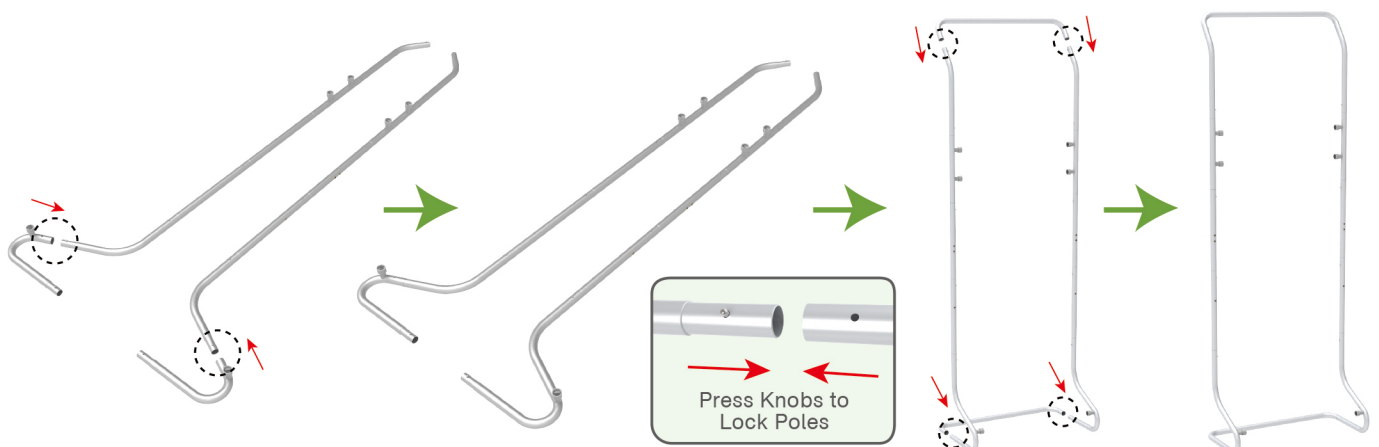
STEP 01

Connect to make long poles according to labelings.



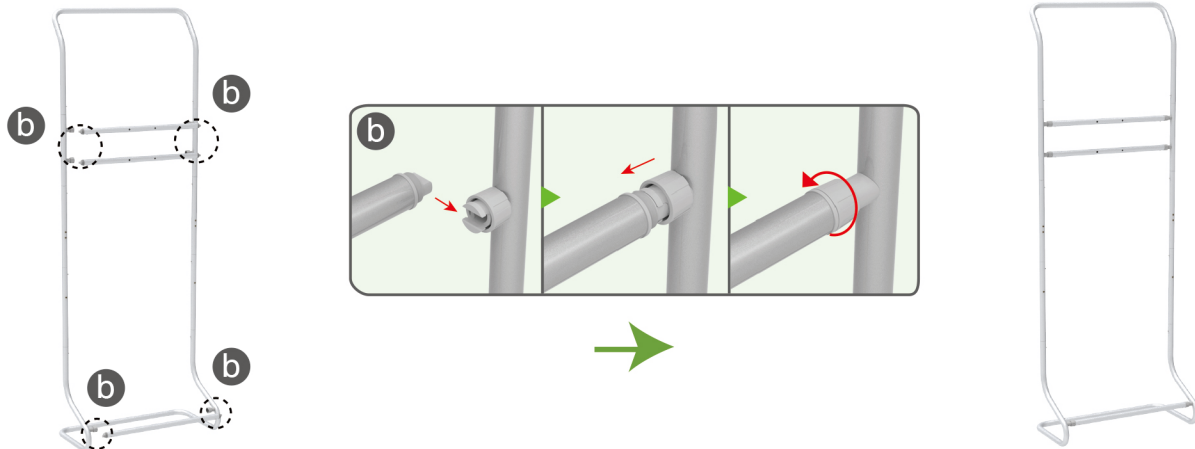
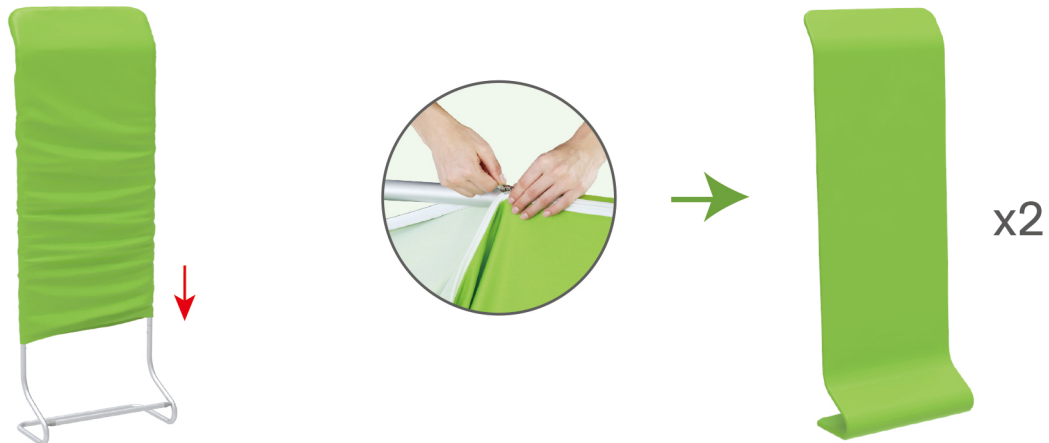
STEP 02

Connect long poles with corner poles according to labelings.



★ One Tool (Hex Wrench)

STEPS

STEP 03 Install cross bars in position.**STEP 04** Slide fabric banner on frame from top and zip up at bottom.

Booth Set Assembly



(1) Base



x3



(2) LED Light & Clip



x2

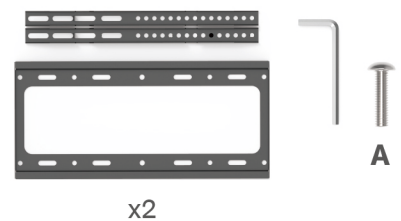
x2

(3) 90° C-Shaped Clip



x4

(5) TV Mount & Screw



x2

A

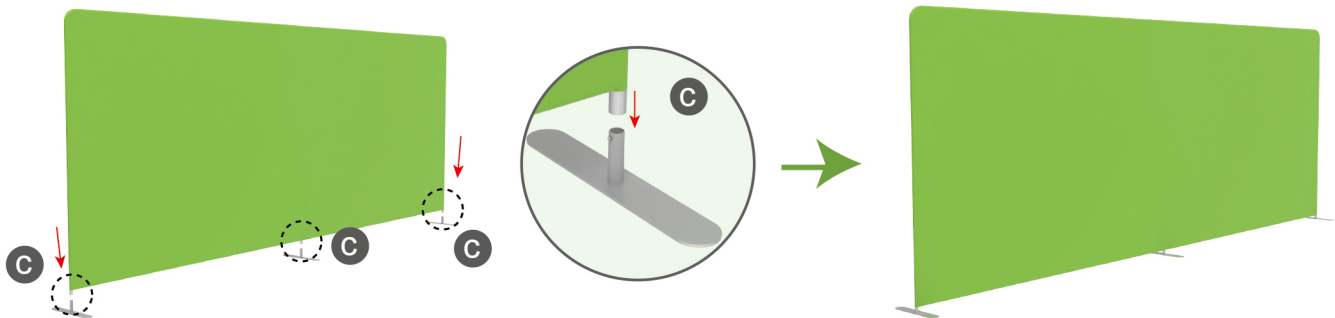
(4) Shelf & Bracket



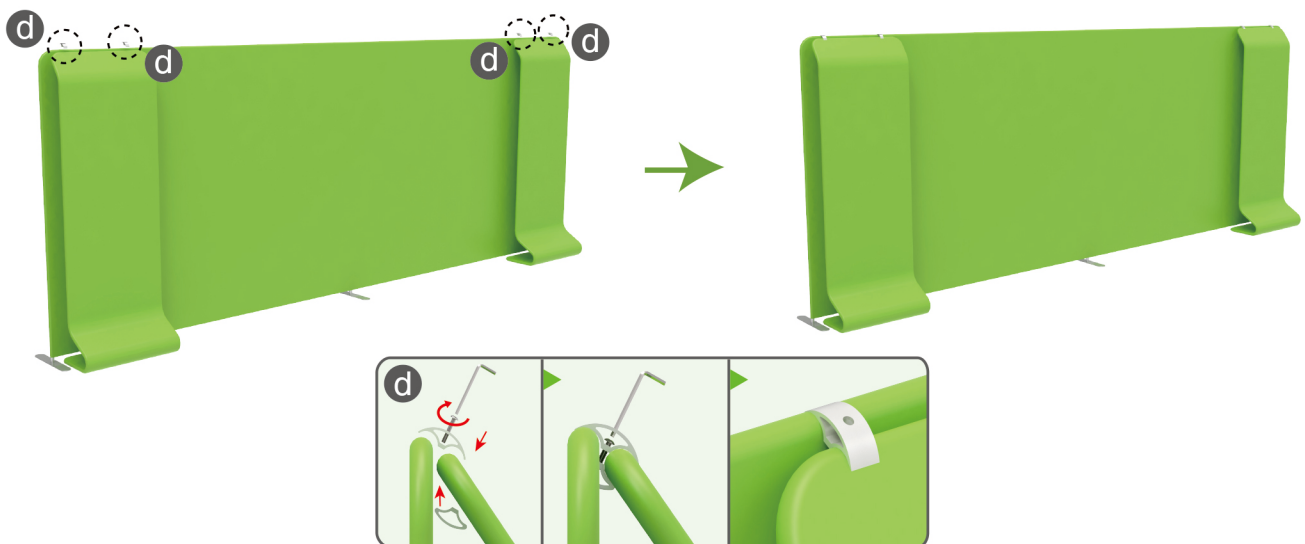
x4

STEPS

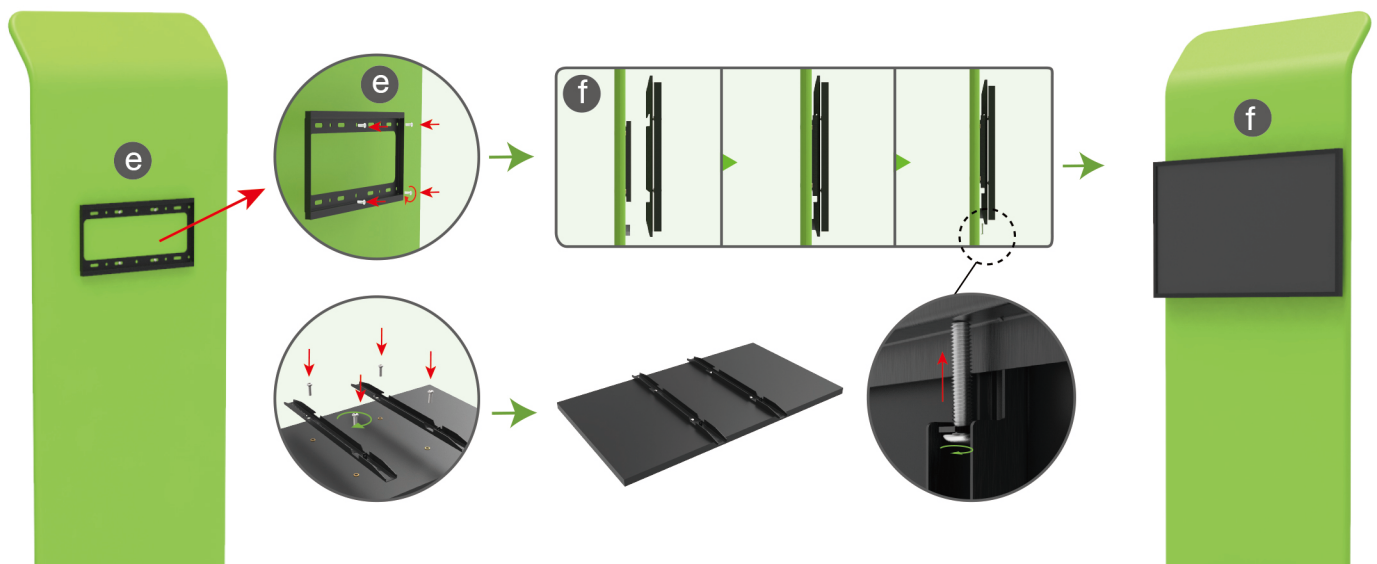
STEP 01 Insert display stands onto feet by pressing their knobs.



STEP 02 Interconnect display stands with C-shaped clips.

**STEP 03**

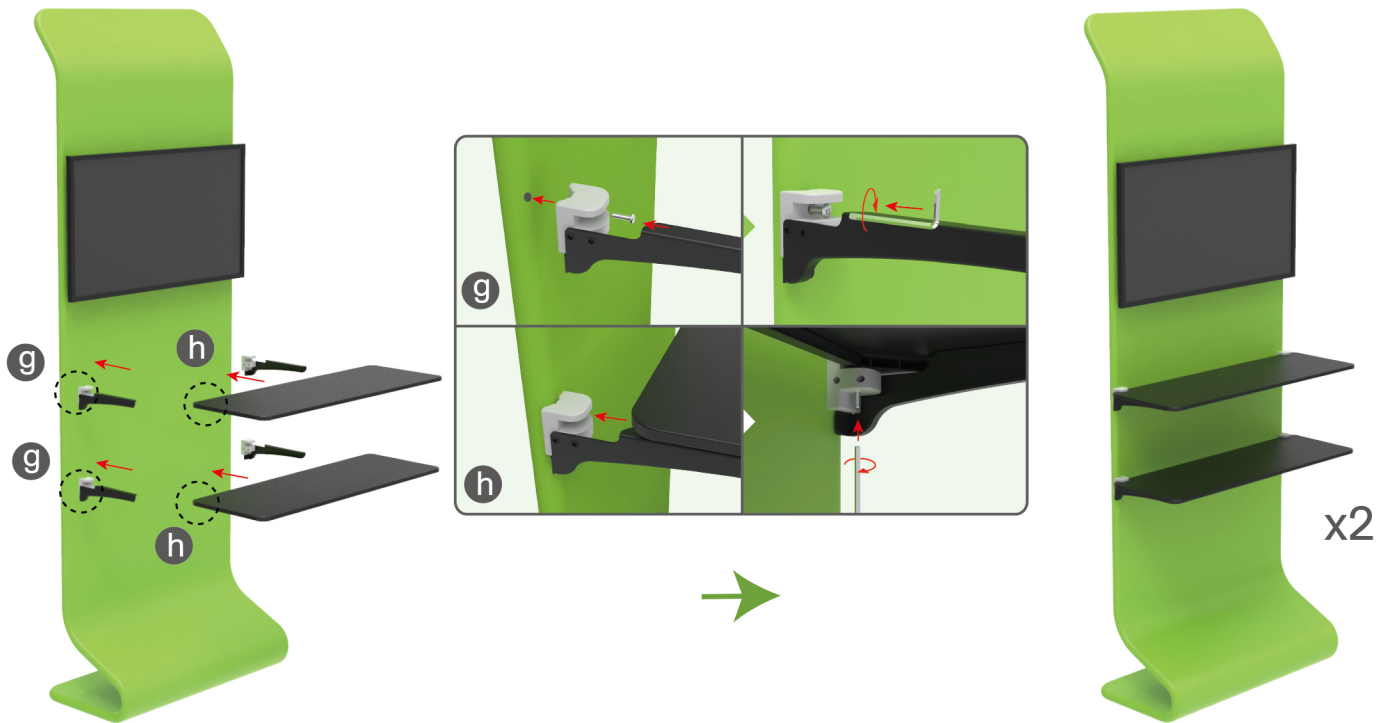
Screw TV mount onto display stand & support brackets onto TV's back with hex wrench, hang TV onto mount & screw.



STEPS

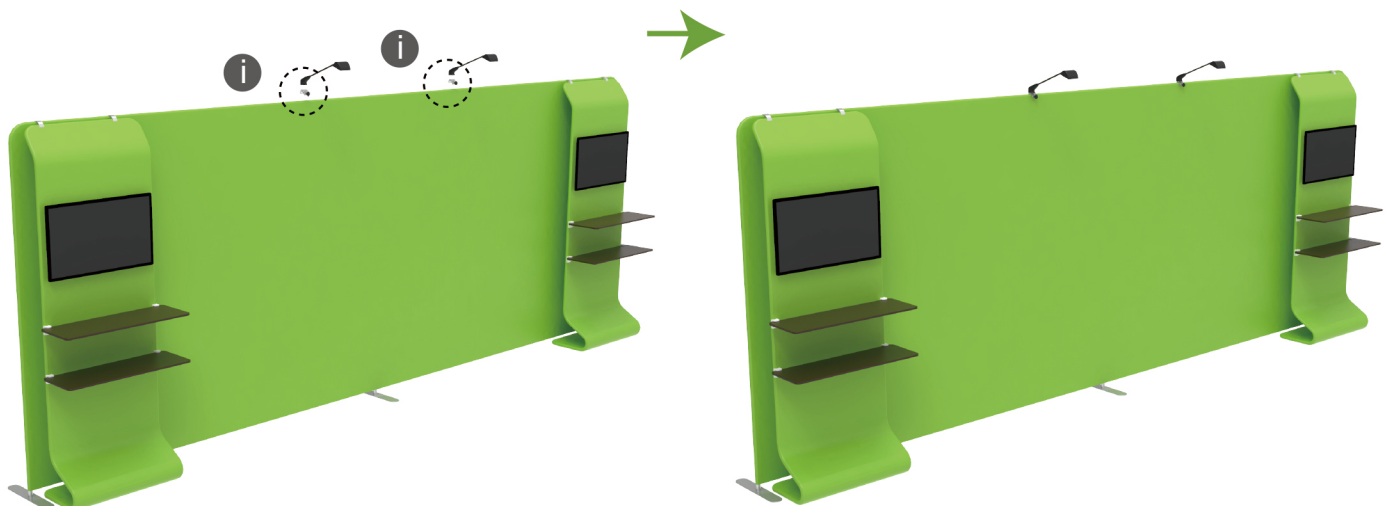
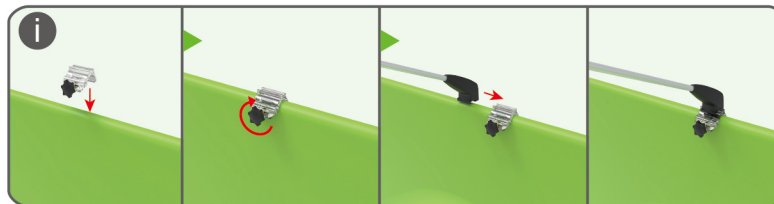
STEP 04

Screw brackets onto display stand with hex wrench, insert shelves into slots.

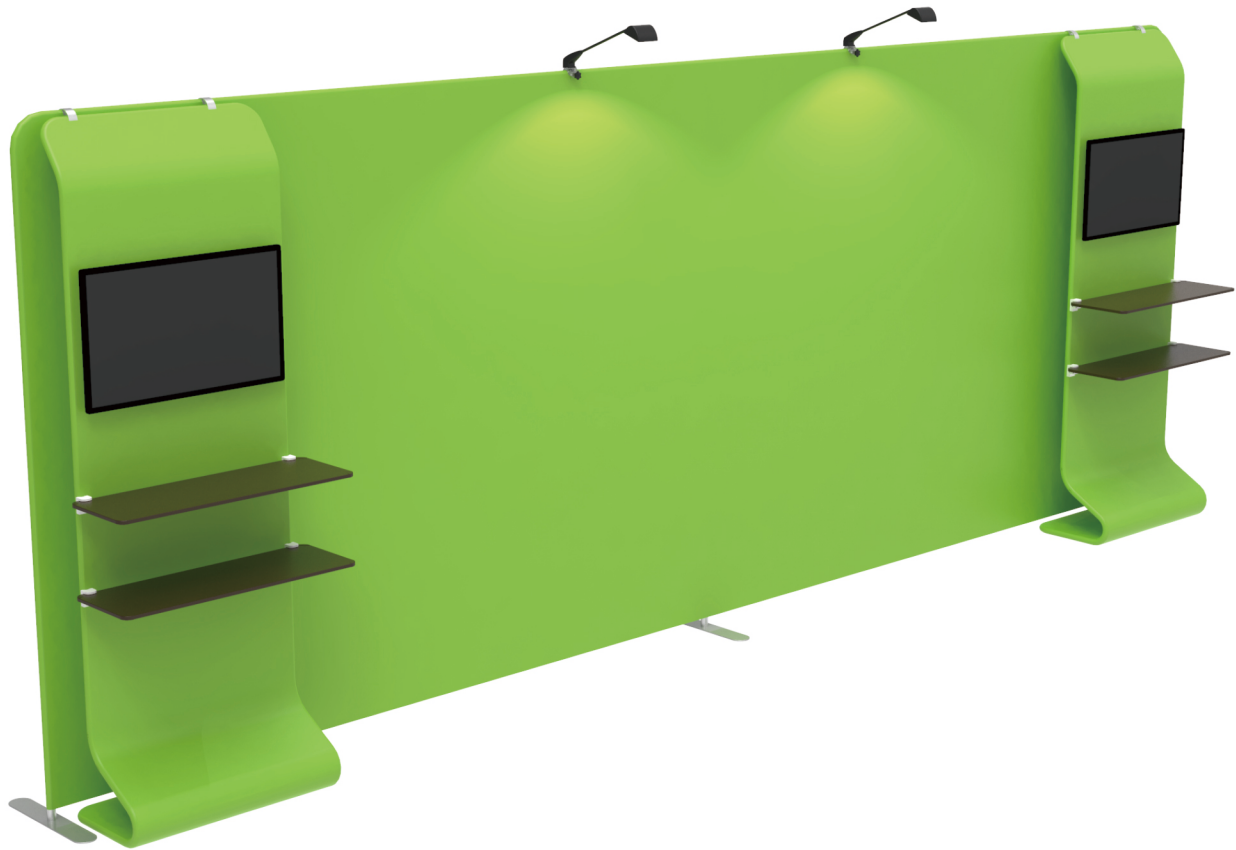


STEP 05

Screw light clips at top of display stands, slide lights onto them and adjust their direction.



STEPS



10X20FT-BOOTH-A