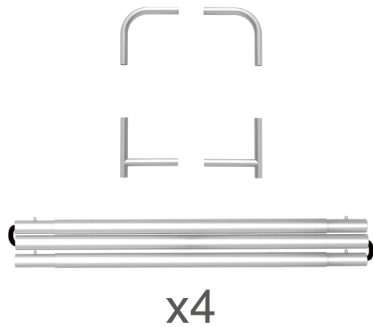


## STEPS

(1) Hardware

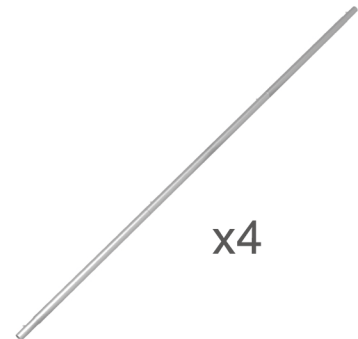
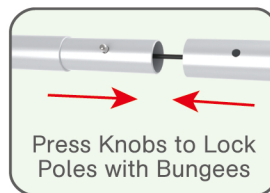
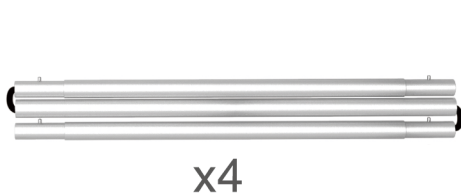


(2) Printed Graphic Fabric Banner



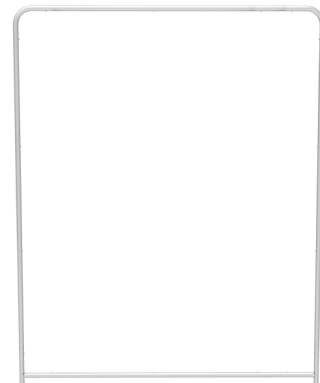
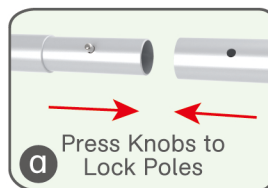
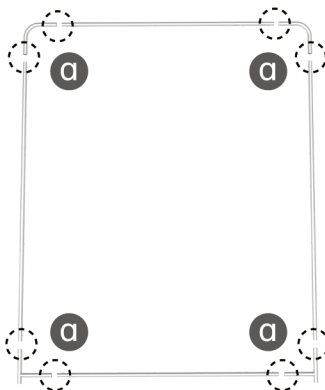
## STEP 01

Connect to make long poles according to labelings.



## STEP 02

Connect long poles with corner poles according to labelings.



## STEP 03

Slide fabric banner on frame from top and zip up at bottom.



Same Steps for Other Display Stands

## STEPS

## (1) Hardware

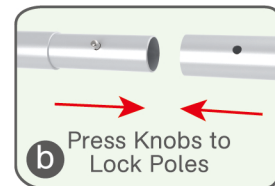
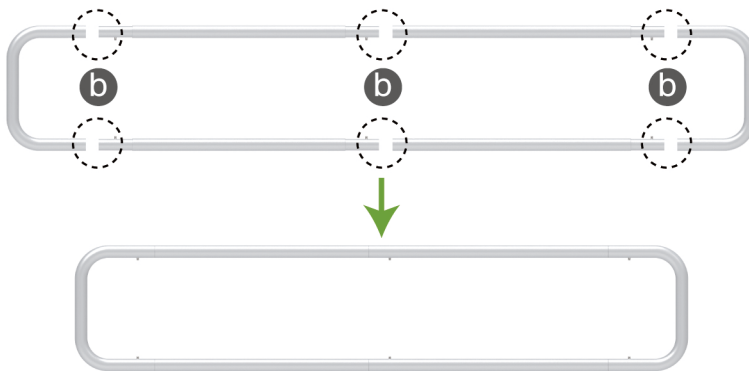


(2) Printed Graphic Fabric Banner



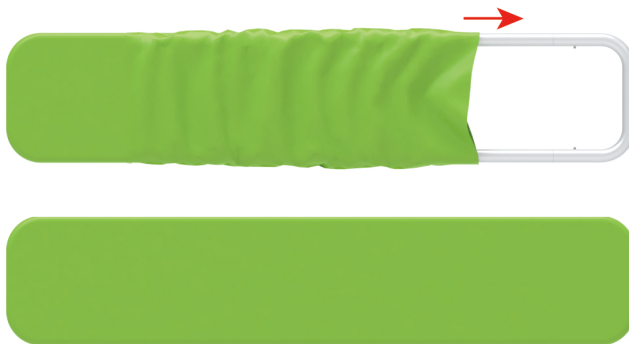
## STEP 01

Connect poles according to labelings.

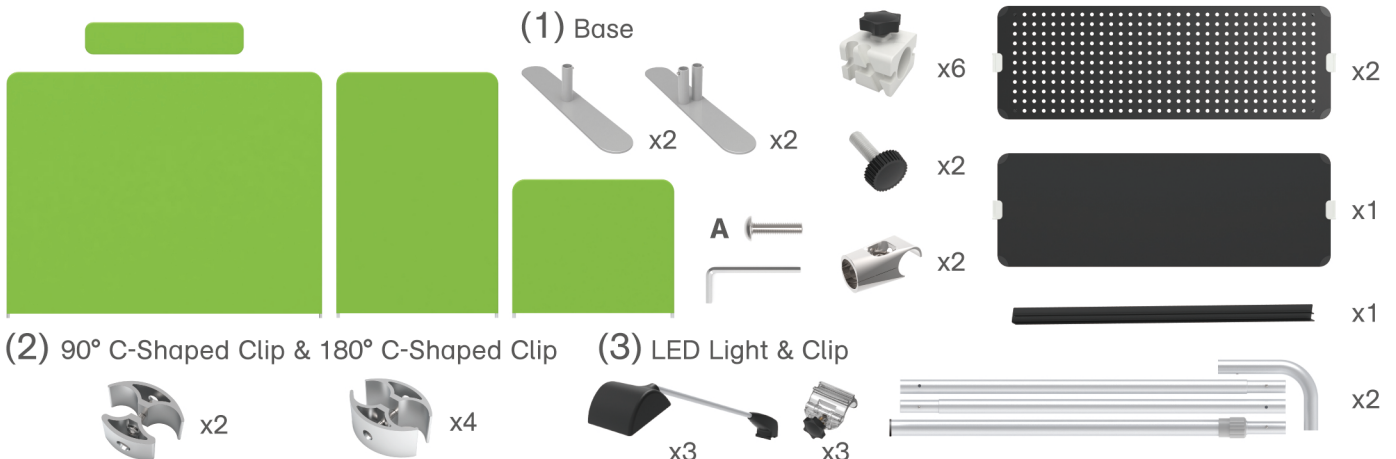


## STEP 02

Slide fabric banner on frame from left and zip up at right.

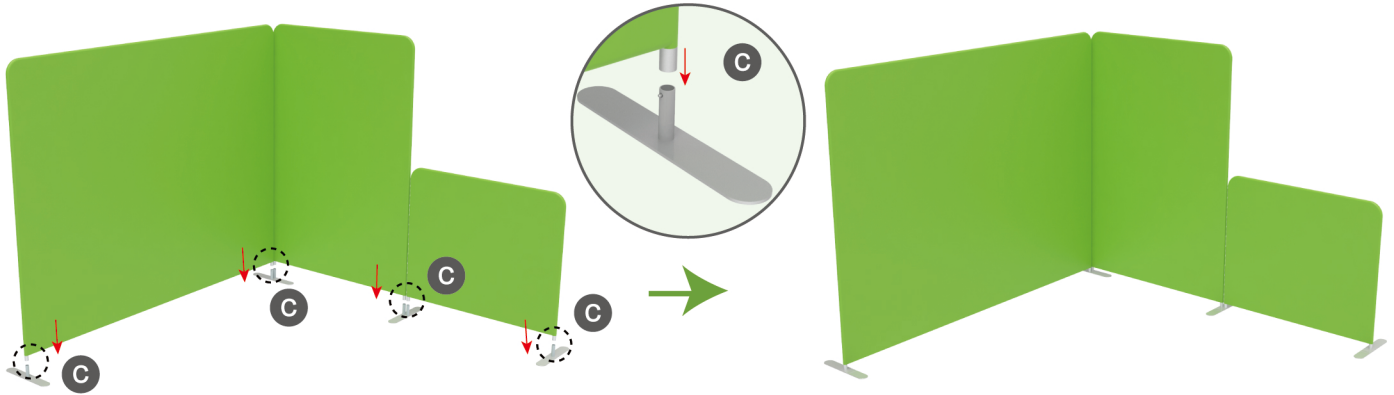


## Booth Set Assembly

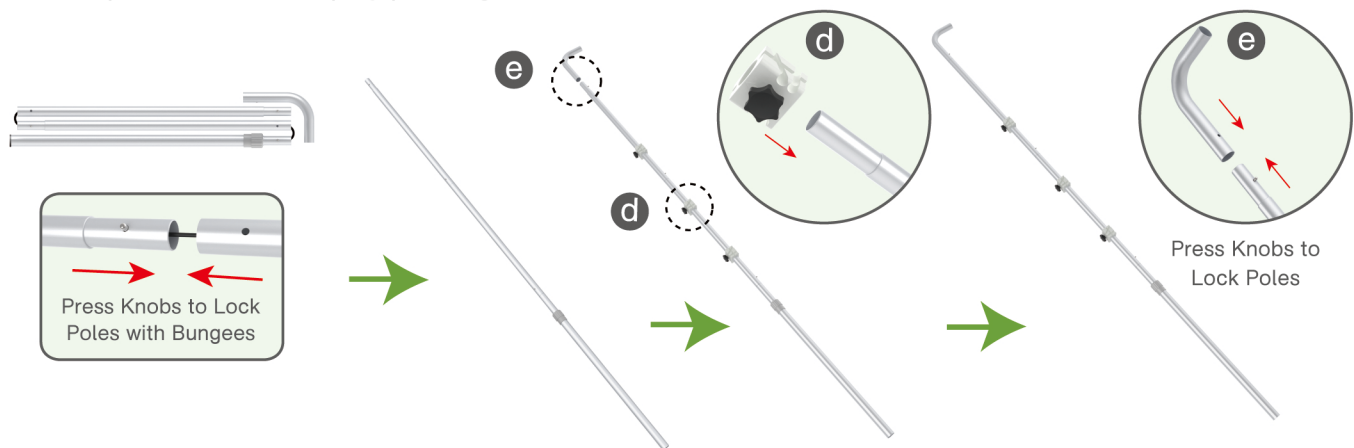


## STEPS

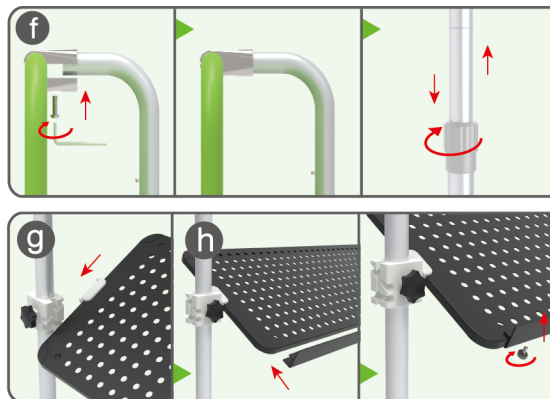
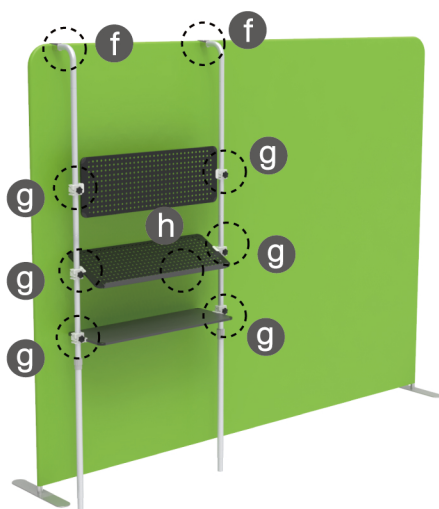
**STEP 01** Insert display stands onto feet by pressing their knobs.

**STEP 02**

Connect to make long poles according to labelings, slide three-way clips onto long poles, insert short curved poles onto their top by pressing their knobs.

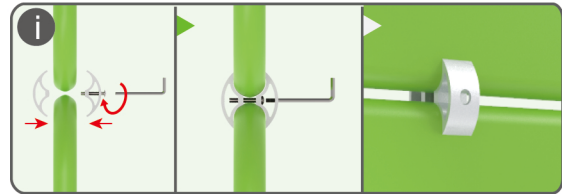
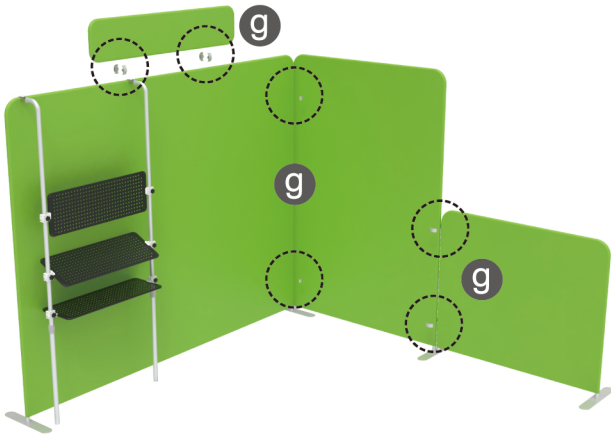
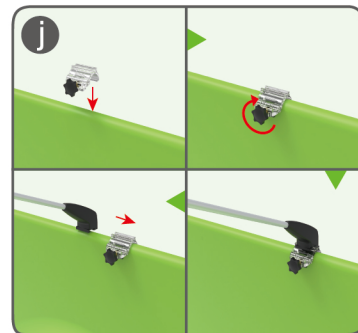
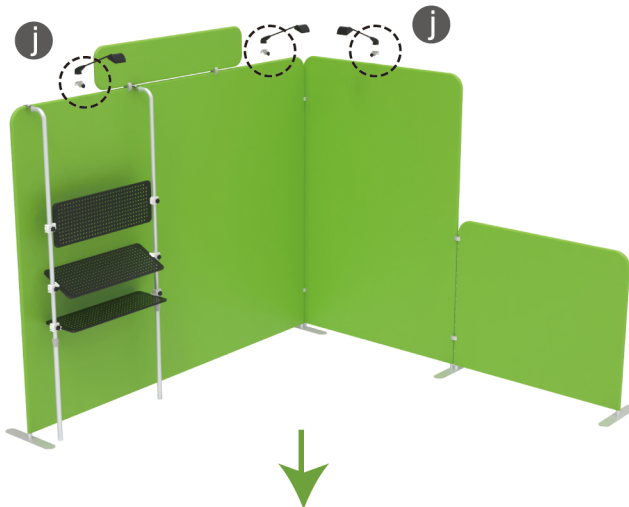
**STEP 03**

Connect long poles and display stand with clamps, adjust their height properly as needed by loosening and tightening screws.

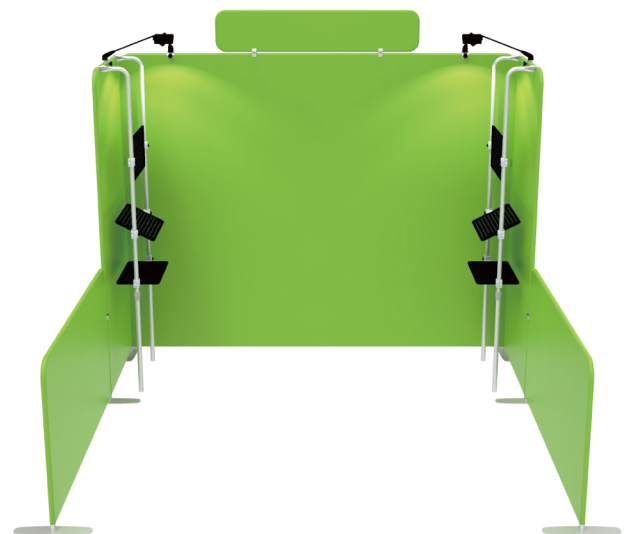


Clip into hanging boards based on directions of three-way clips & tightening with thumb screws, clip F-shaped bar onto hanging board with thumb screws.

## STEPS

**STEP 04** Interconnect display stands with C-shaped clips.**STEP 05** Screw light clips at top of display stands, slide lights onto them and adjust their direction.

10X10FT-BOOTH-O



10X10FT-BOOTH-Y