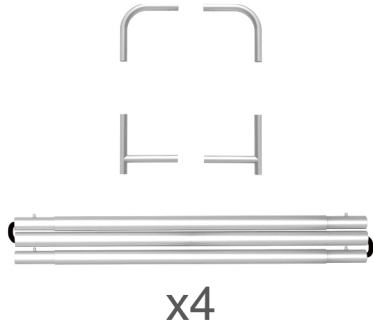


STEPS

(1) Hardware

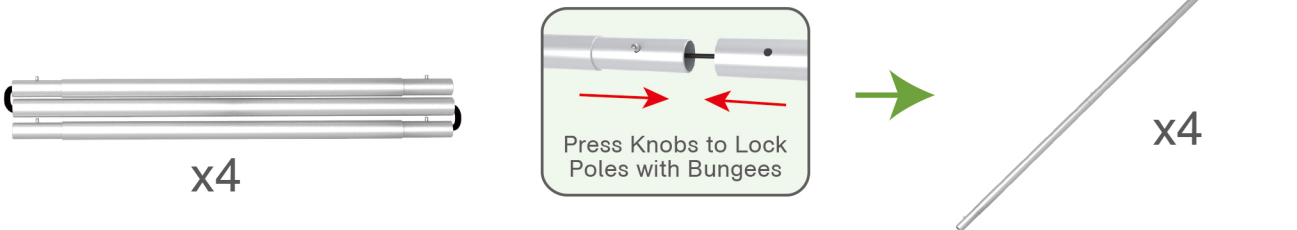


(2) Printed Graphic Fabric Banner



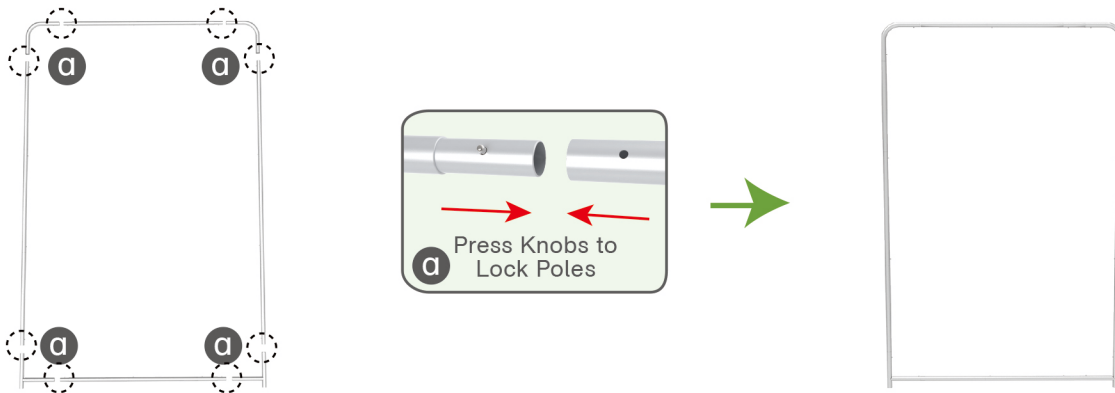
STEP 01

Connect to make long poles according to labelings.



STEP 02

Connect long poles with corner poles according to labelings.



STEP 03

Slide fabric banner on frame from top and zip up at bottom.

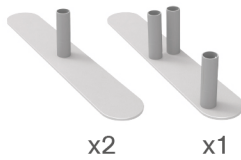


STEPS

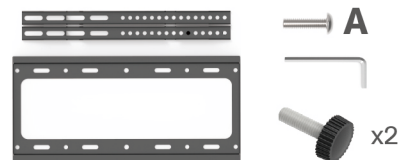
Booth Set Assembly



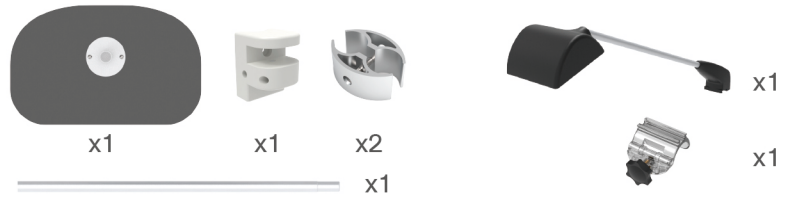
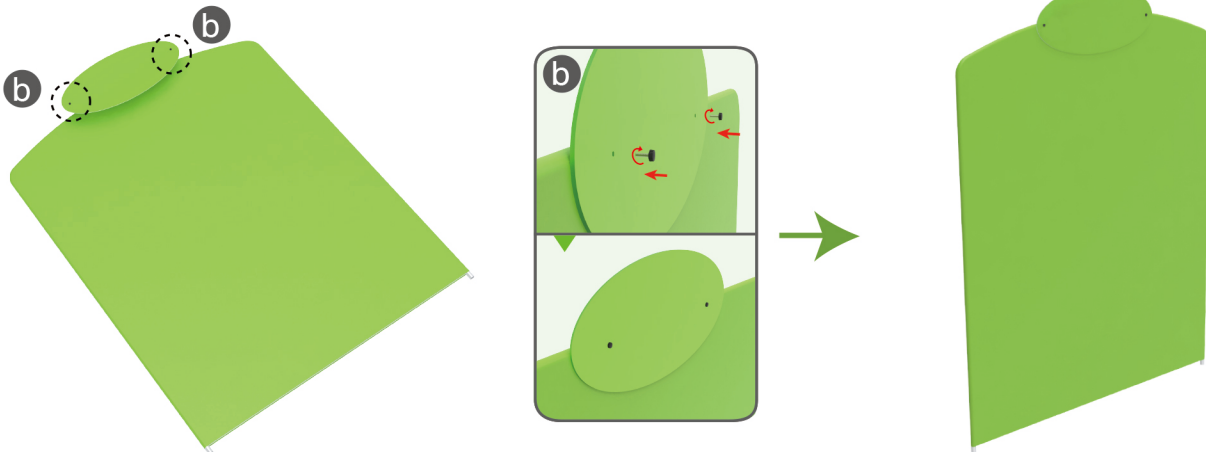
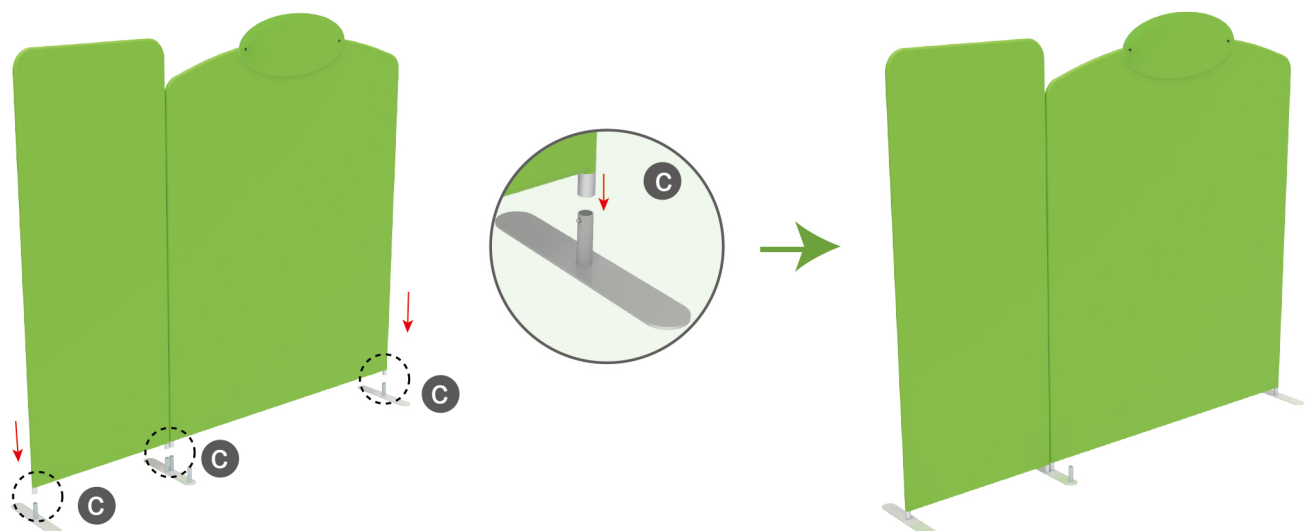
(1) Base



(2) TV Mount & Screw

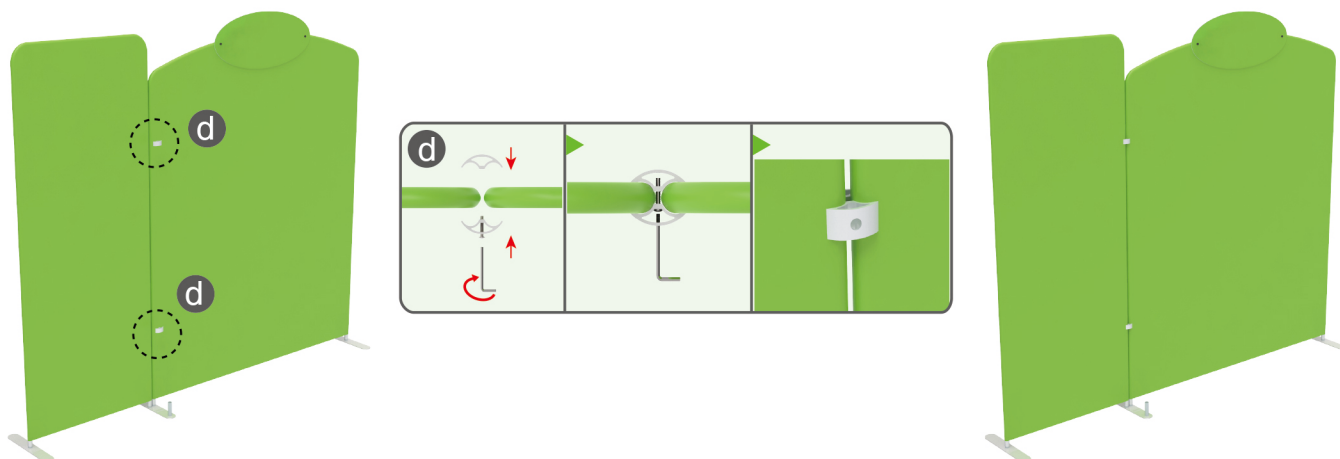


(3) 180° C-Shaped Clip & MDF Board Table (4) LED Light & Clip

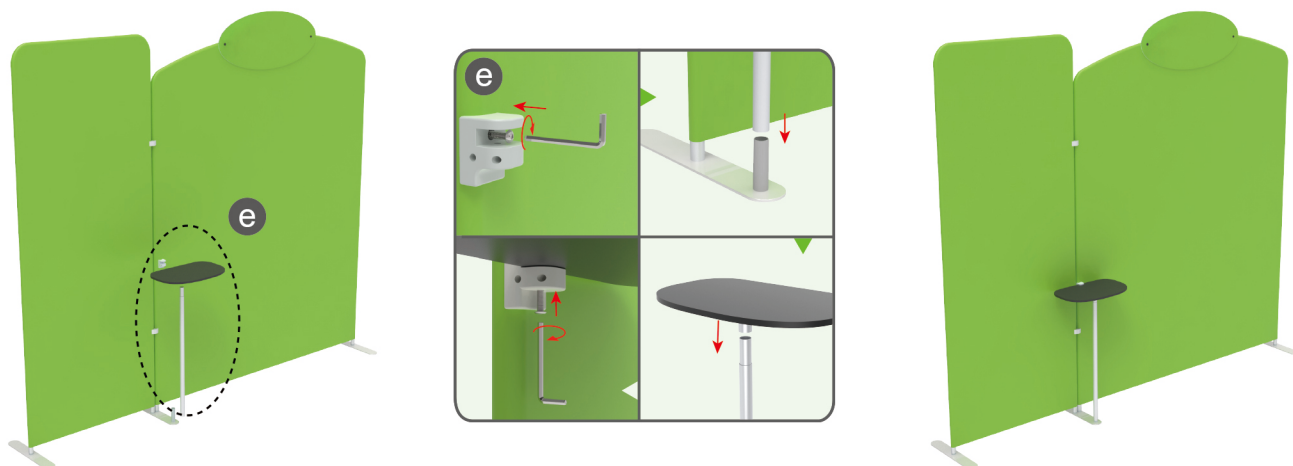
**STEP 01** Screw header onto display stand with thumb screws.**STEP 02** Insert display stands onto feet by pressing their knobs.

STEPS

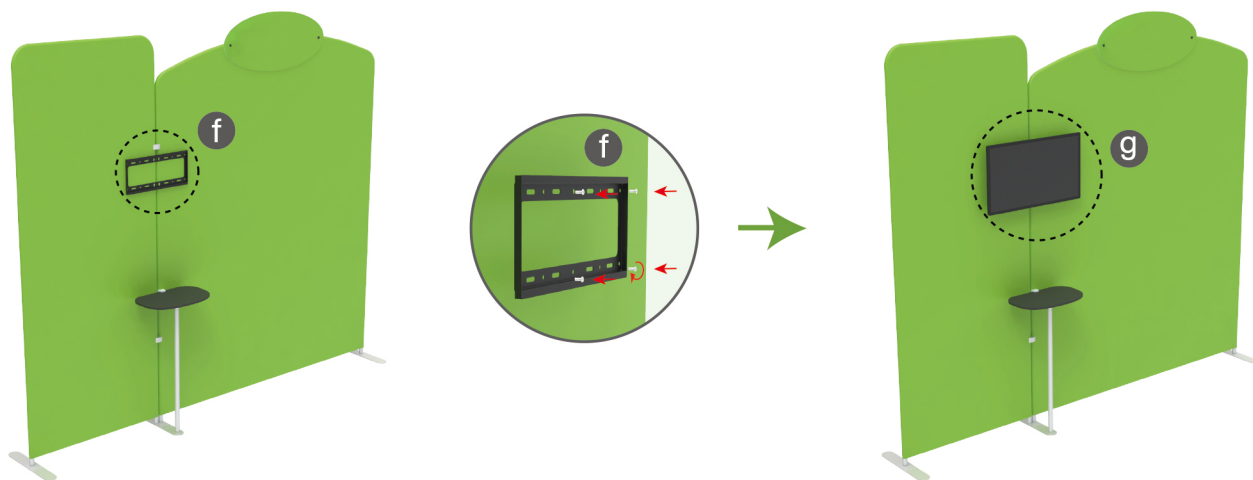
STEP 03 Interconnect display stands with C-shaped clips.

**STEP 04**

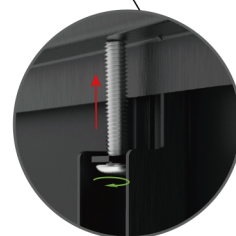
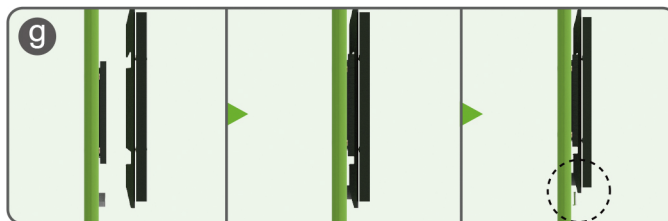
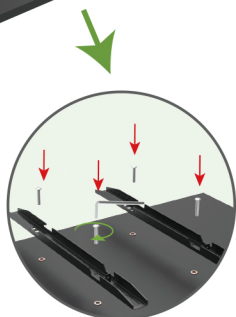
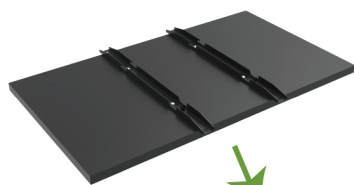
Insert pole into base, screw clamp with hex wrench, place MDF board onto pole & insert into clamp with screw.

**STEP 05**

Screw TV mount with hex wrench.

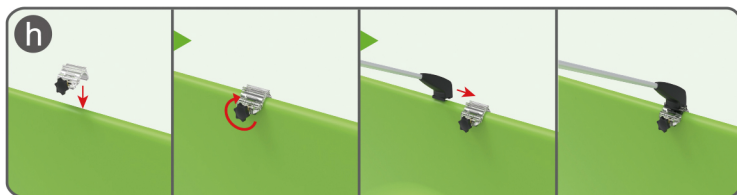


STEPS



STEP 06

Screw light clips at top of display stands, slide lights onto them and adjust their direction.



10X10FT-BOOTH-04



10X10FT-BOOTH-14