

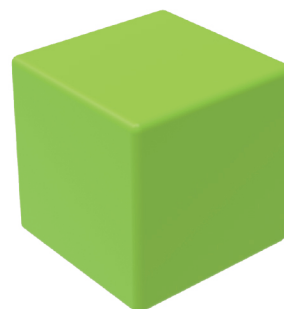
★ One Tool (Hex Wrench)

## STEPS

## (1) Hardware

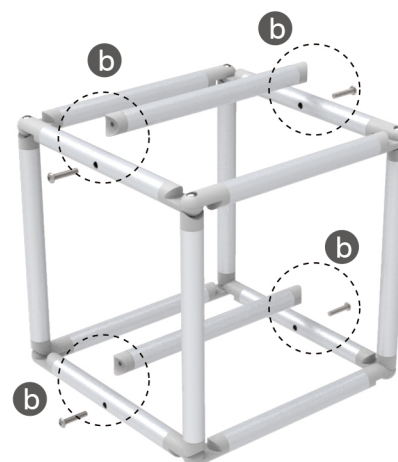
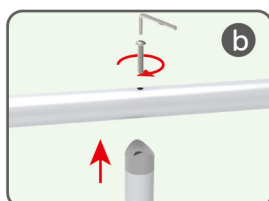
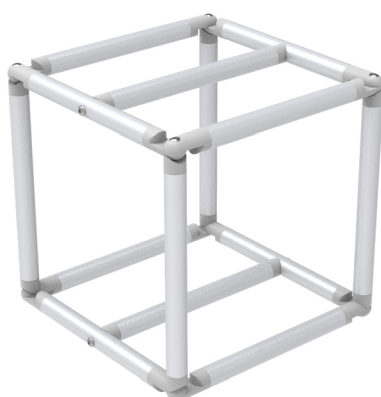
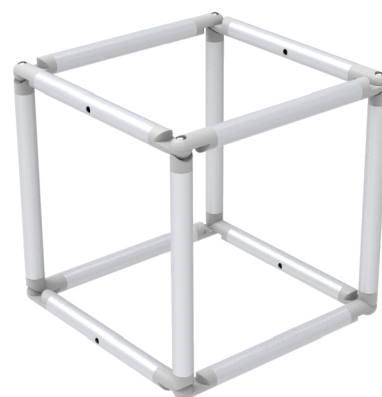
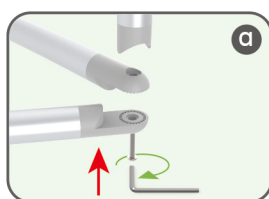
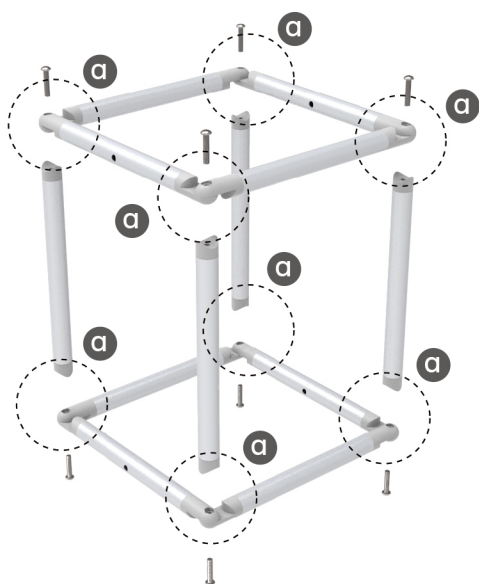


## (2) Printed Graphic Fabric Banner (Optional)



## STEP 01

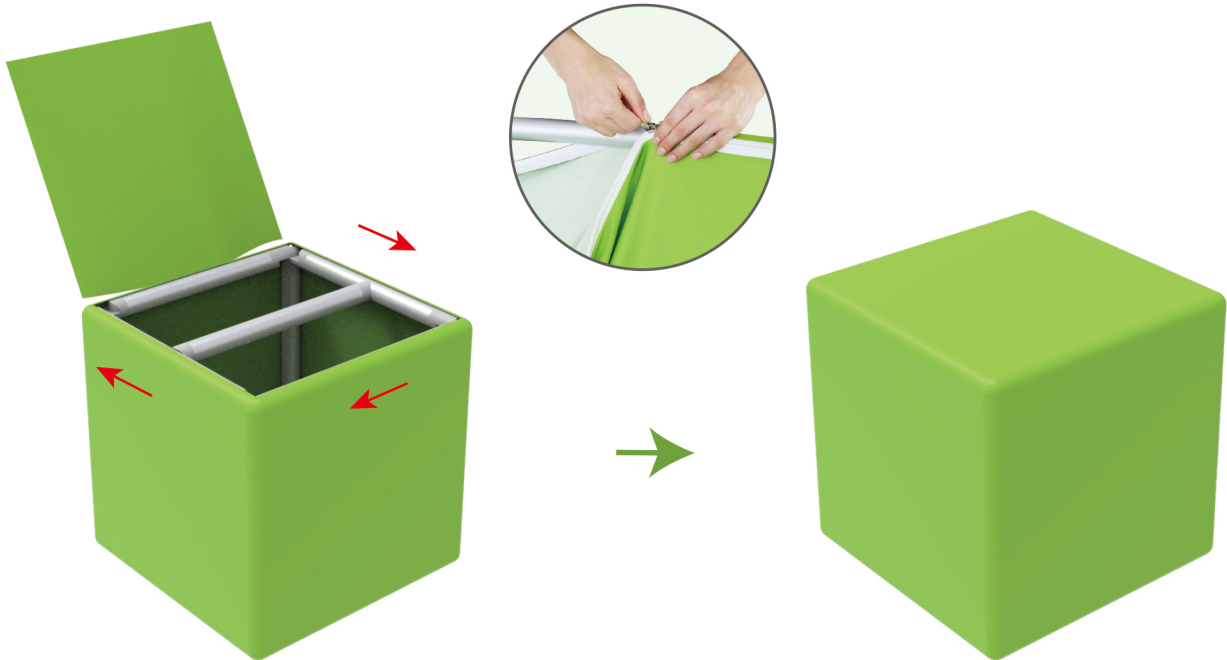
Connect support poles onto frame with screws.



## STEPS

## STEP 02

Slide fabric banner on frame from bottom and zip up at top.



TF-CS-02

TF-CS-01

TF-CS-03