

## STEPS

(1) Hardware

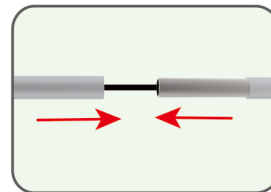


(2) Printed Graphic Fabric Banner Inserted into Base



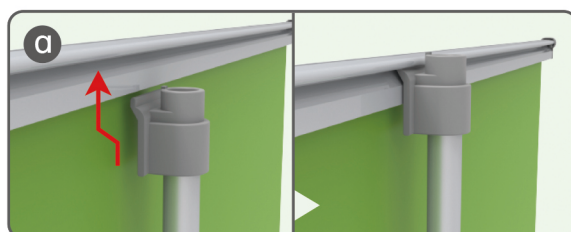
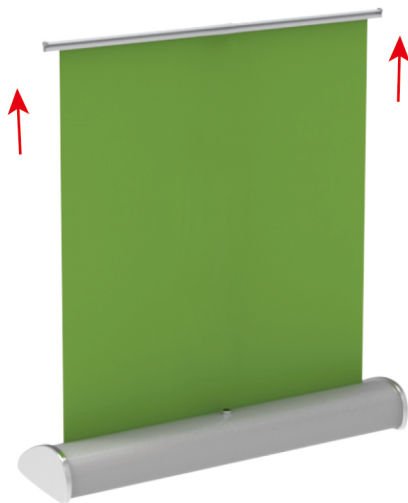
## STEP 01

Interconnect Poles with Bungees to make support pole.



## STEP 02

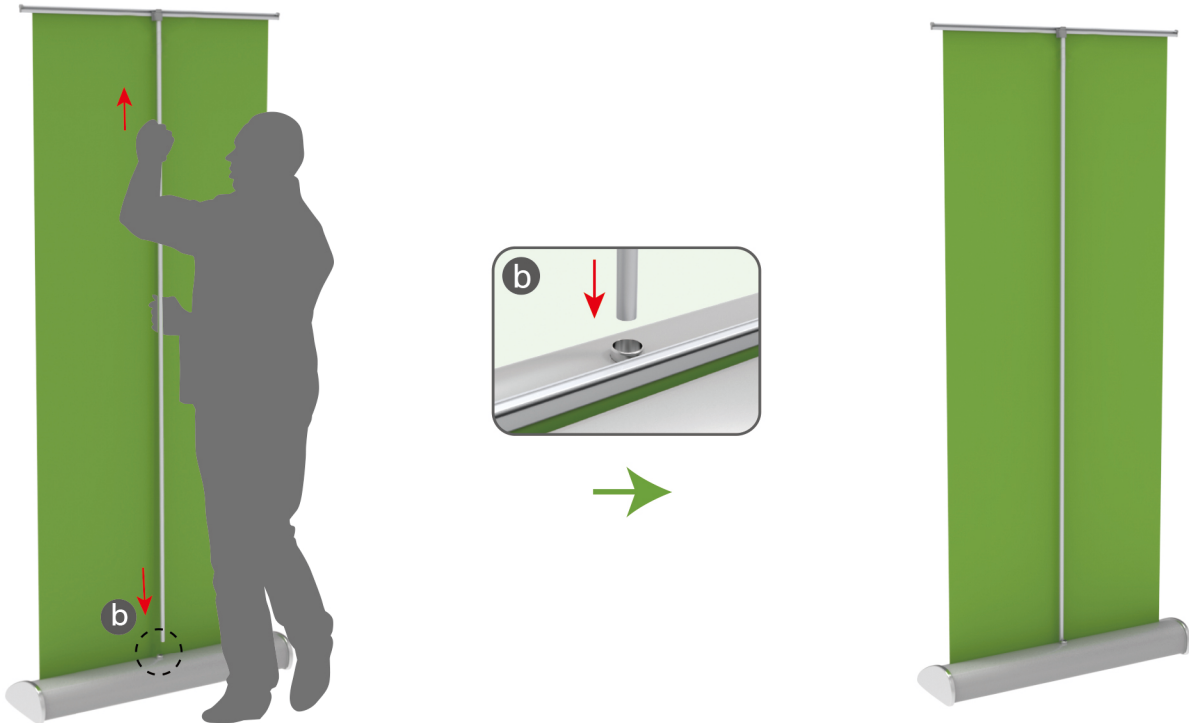
Pull up fabric banner & insert support pole's top slot onto its top edge.



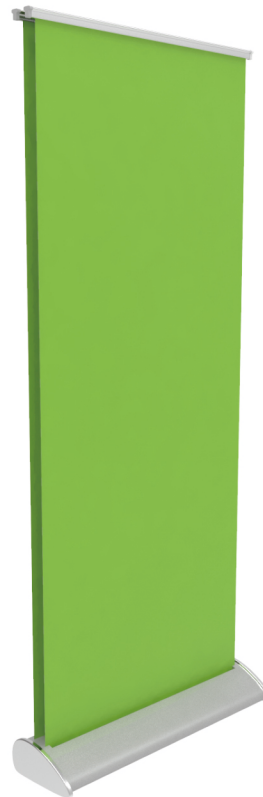
## STEPS

## STEP 03

Continue propping up fabric banner fully with support pole & insert it into middle round socket of base.



RB-R-03S  
RB-R-03AS



RB-R-03D  
RB-R-03AD