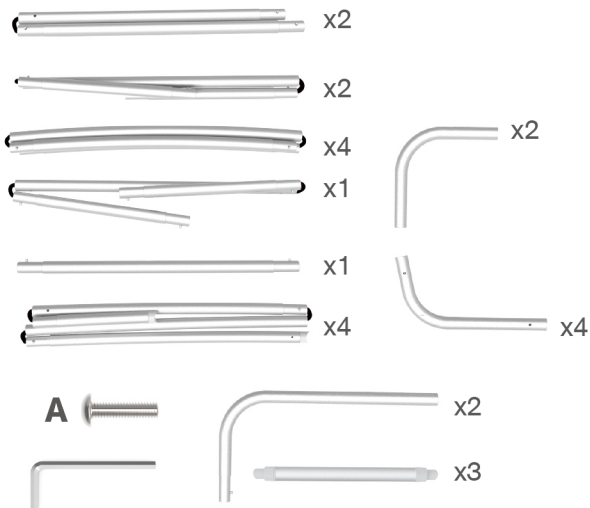


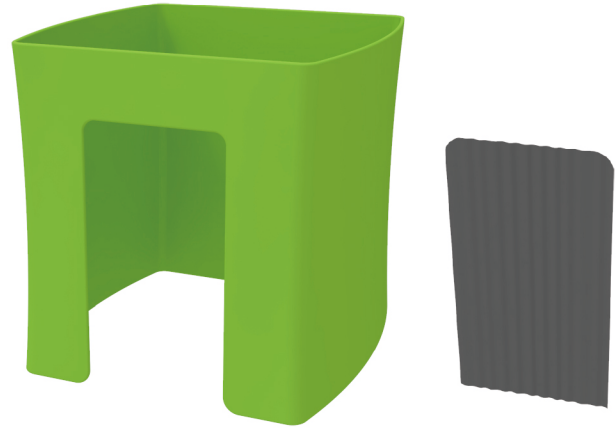
★ One Tool (Hex Wrench) 

STEPS

(1) Hardware

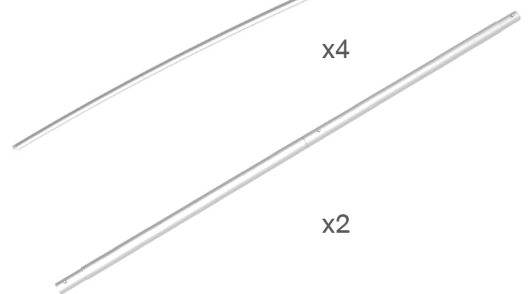
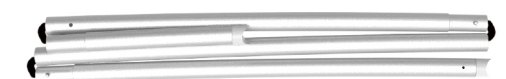
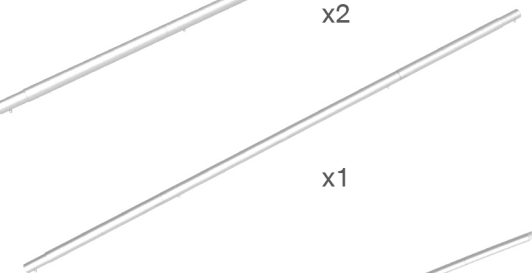
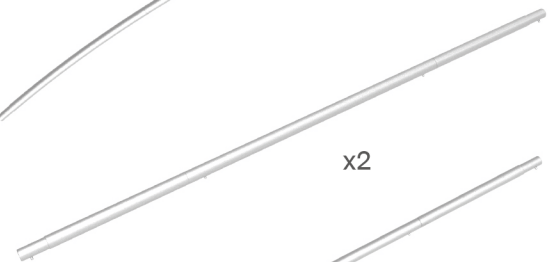
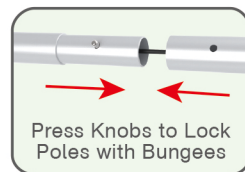


(2) Printed Graphic Fabric Banner (Optional)



STEP 01

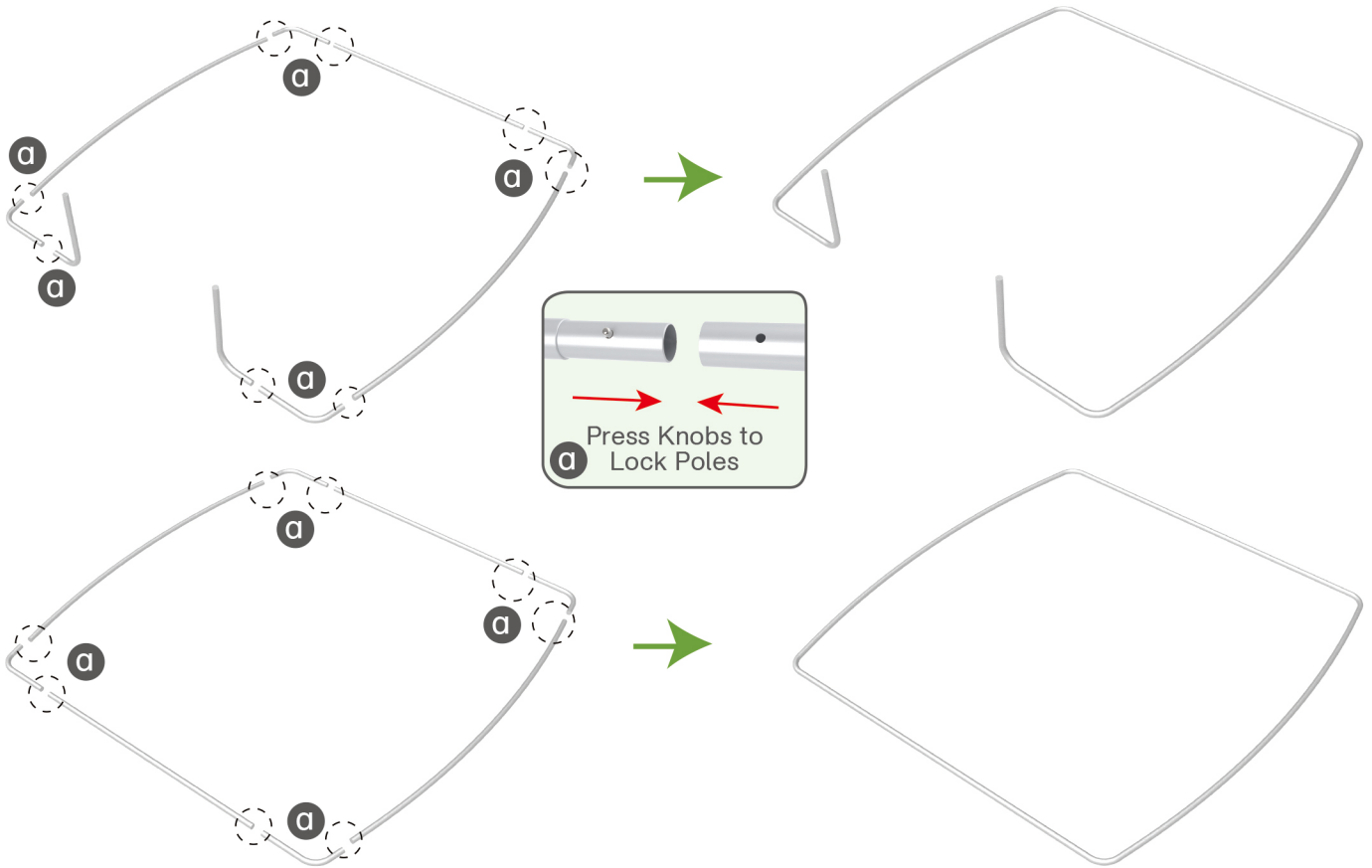
Connect to make long poles according to labelings.



STEPS

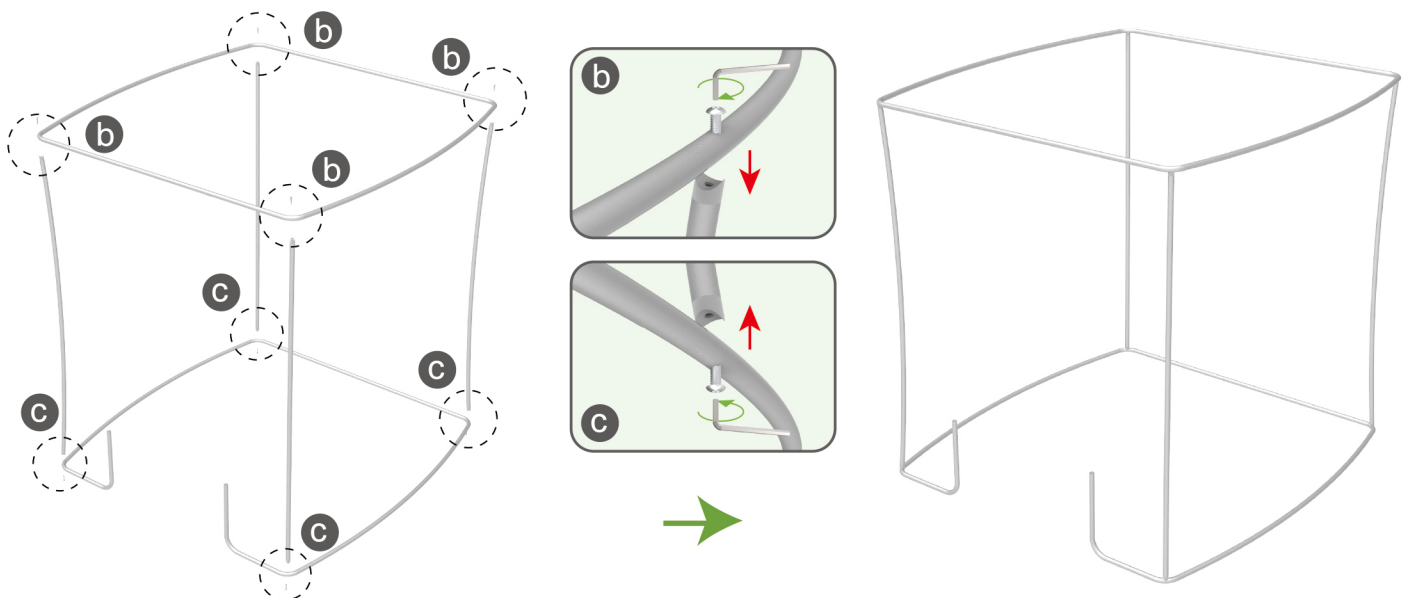
STEP 02

Connect long poles with corner poles according to labelings.



STEP 03

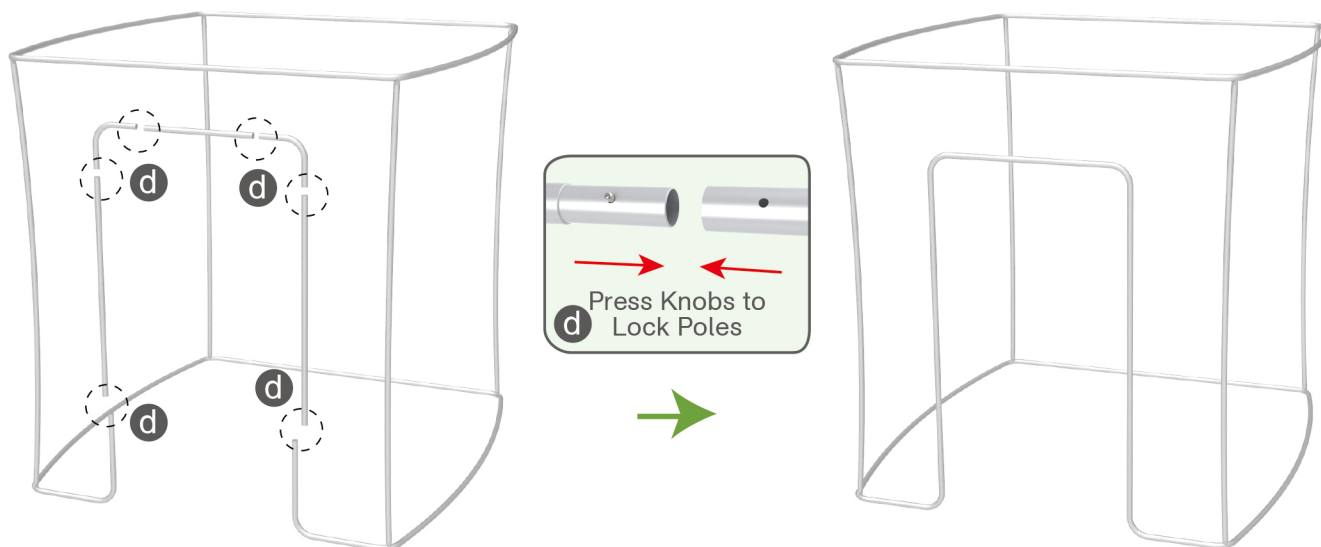
Connect support poles onto frame with screws.



STEPS

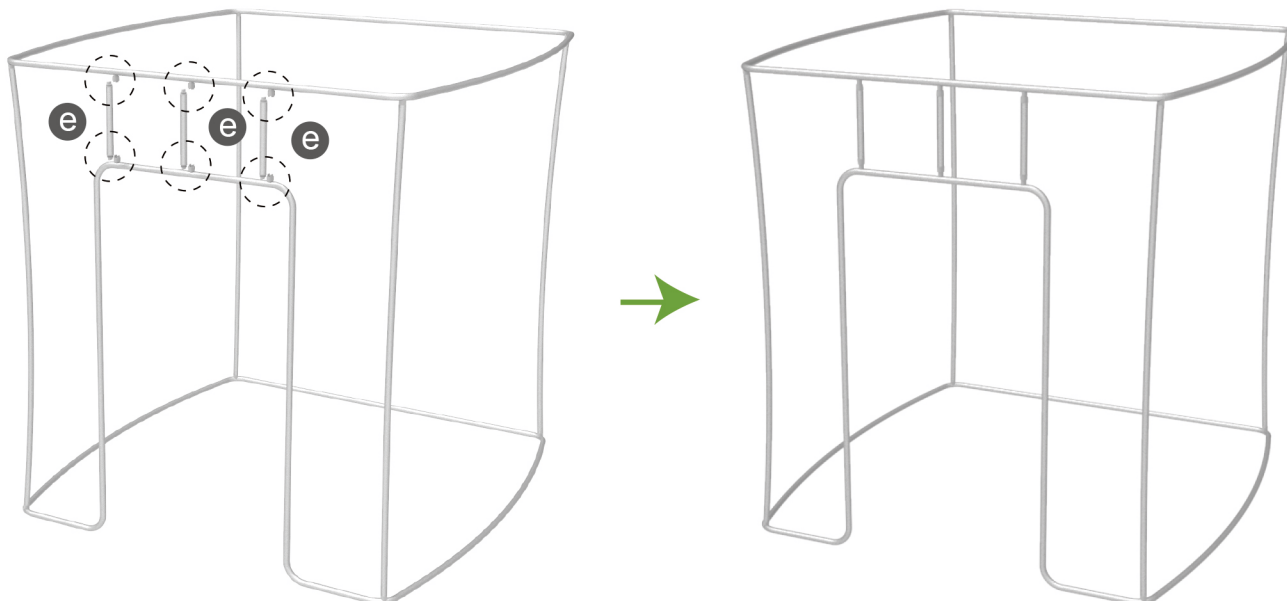
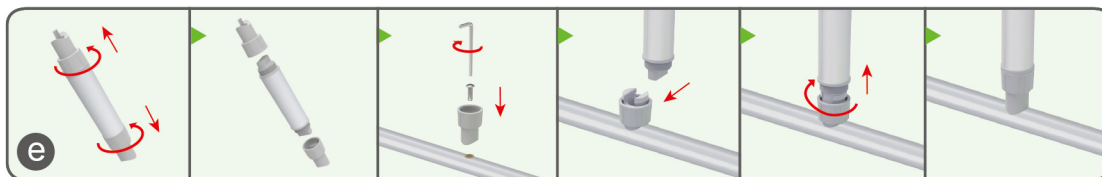
STEP 04

Connect long poles with corner poles according to labelings.



STEP 05

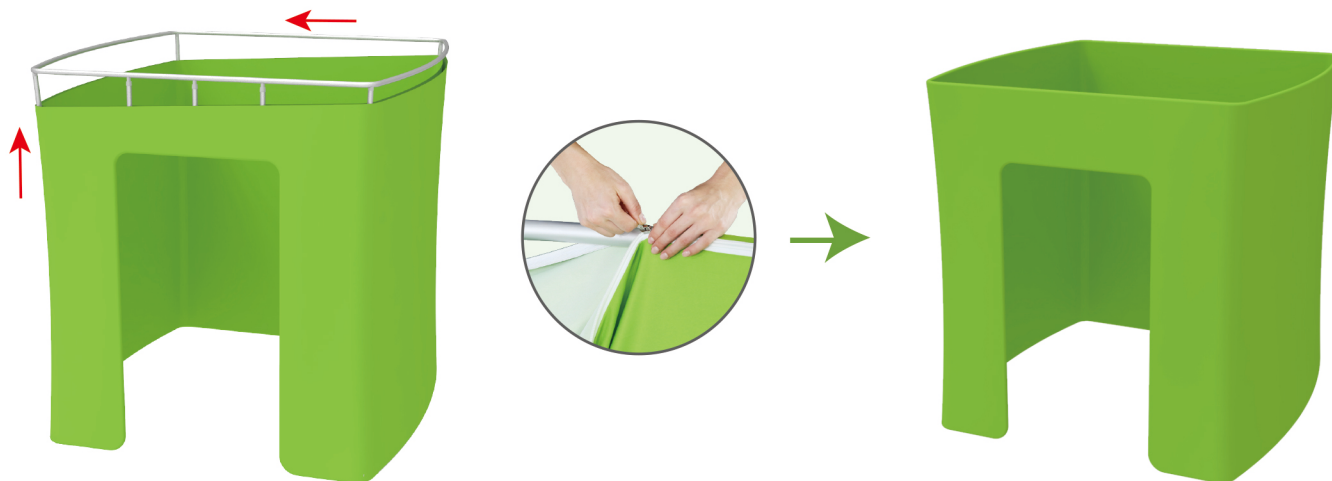
Connect support poles onto frame.



STEPS

STEP 06

Slide fabric banner on frame from bottom and zip up at top.



STEP 07

Stick curtain to doorway's top with velcro.

