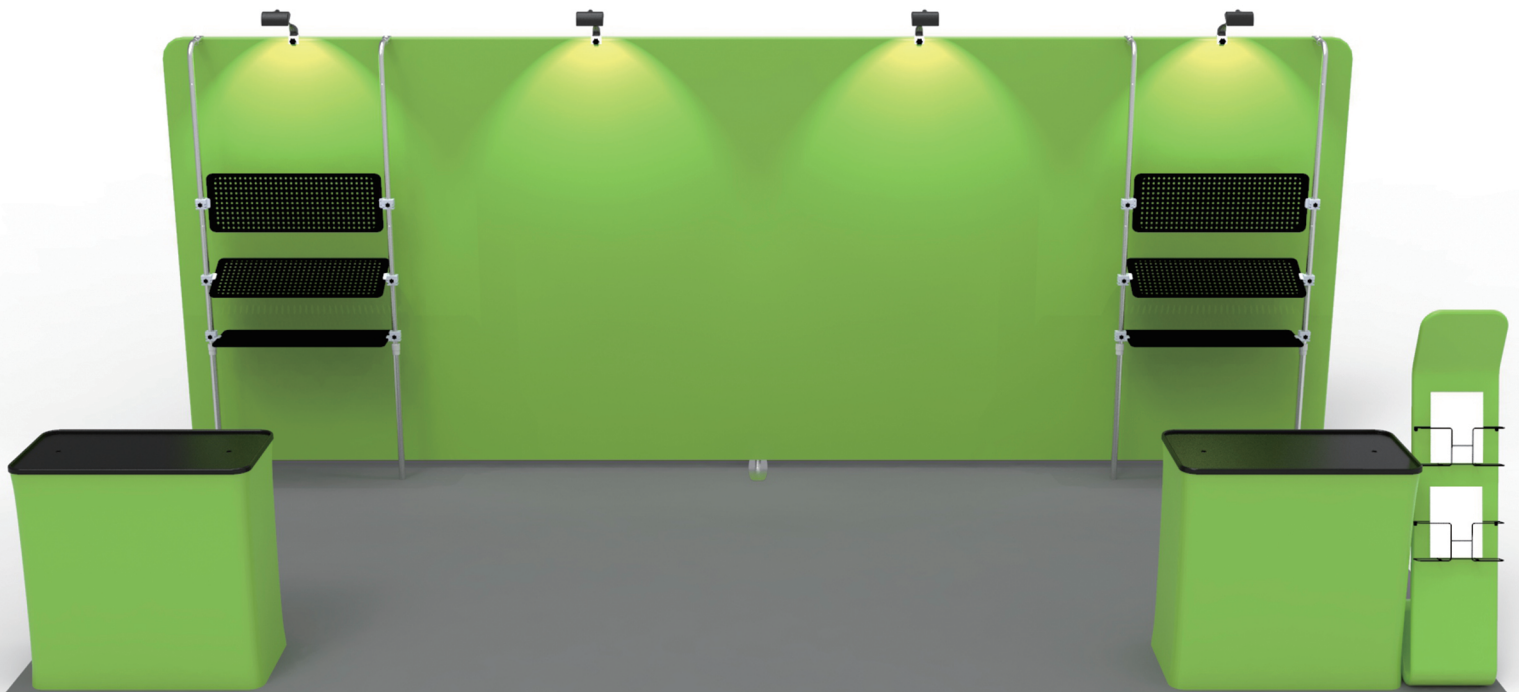


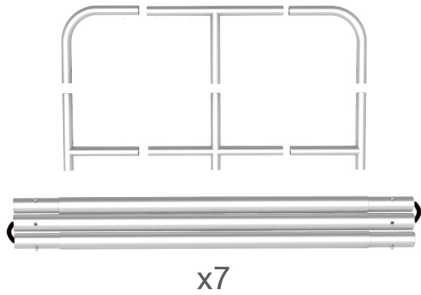
# INSTRUCTION



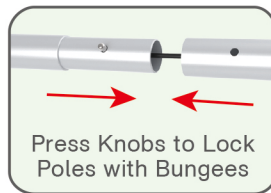
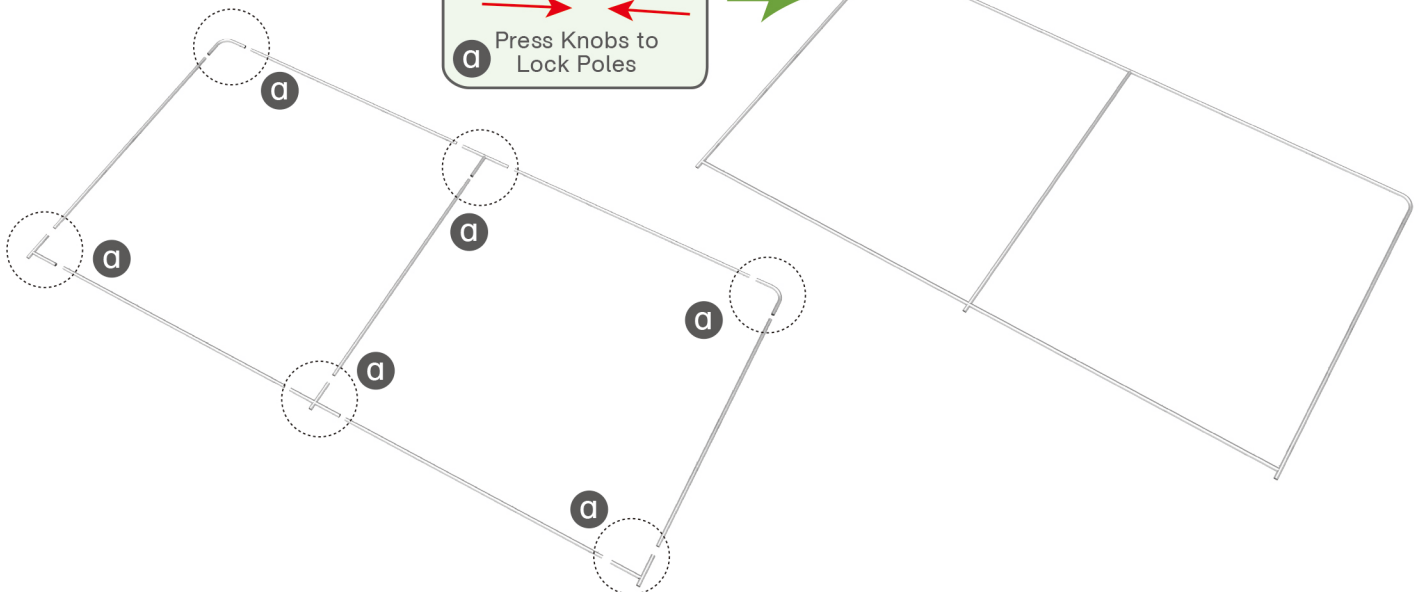
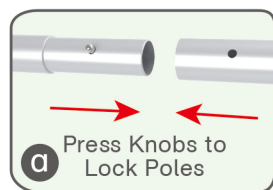
10X20FT-BOOTH-M

## STEPS

(1) Hardware



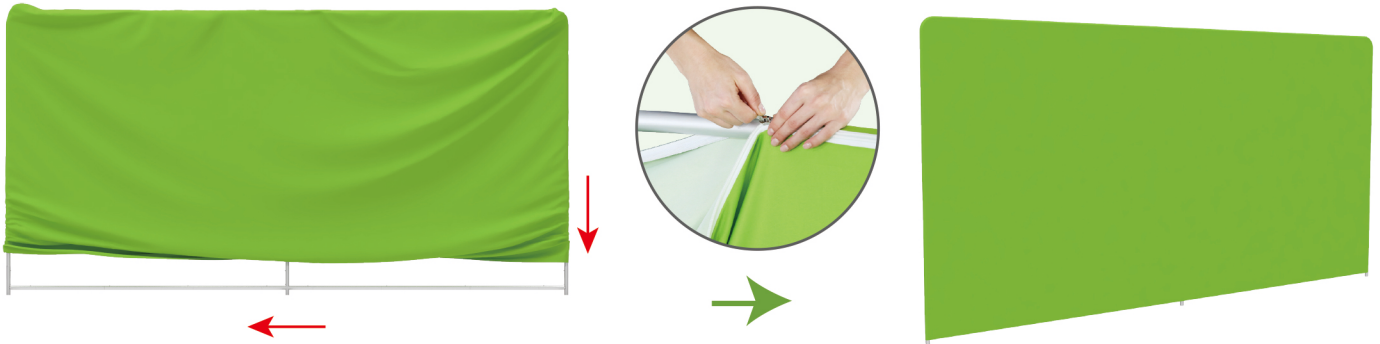
(2) Printed Graphic Fabric Banner (Optional)

**STEP 01** Connect to make long poles according to labelings.**STEP 02** Connect long poles with corner poles according to labelings.

## STEPS

## STEP 03

Slide fabric banner on frame from top and zip up at bottom.



## Booth Set Assembly



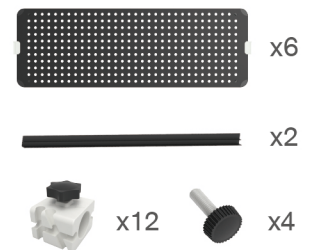
## (1) Base



## (2) LED Light &amp; Clip

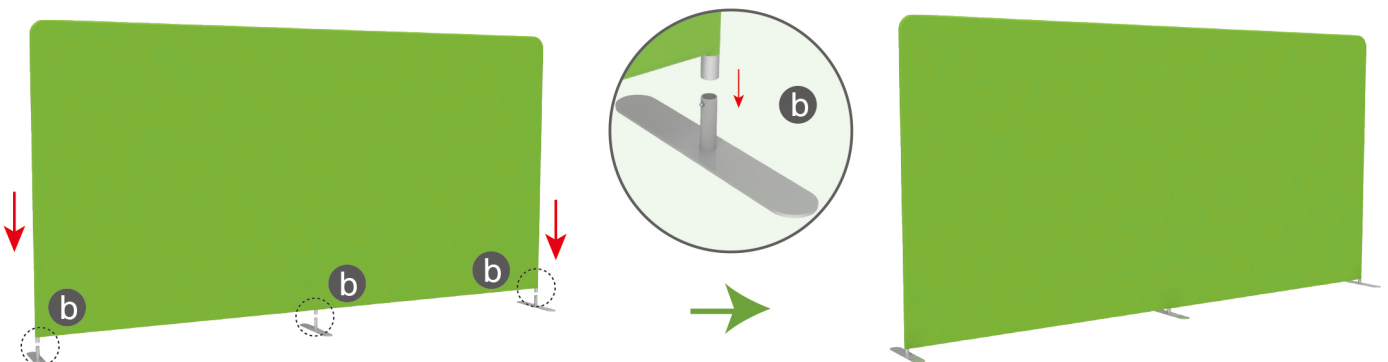


## (3) Shelving Board



## STEP 01

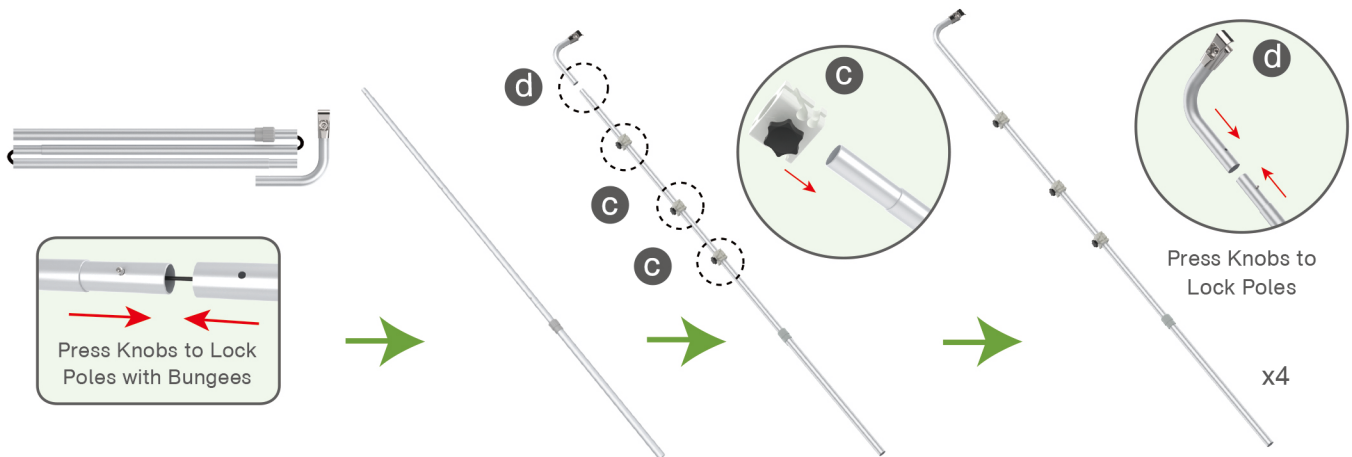
Insert display stands onto feet by pressing their knobs.



## STEPS

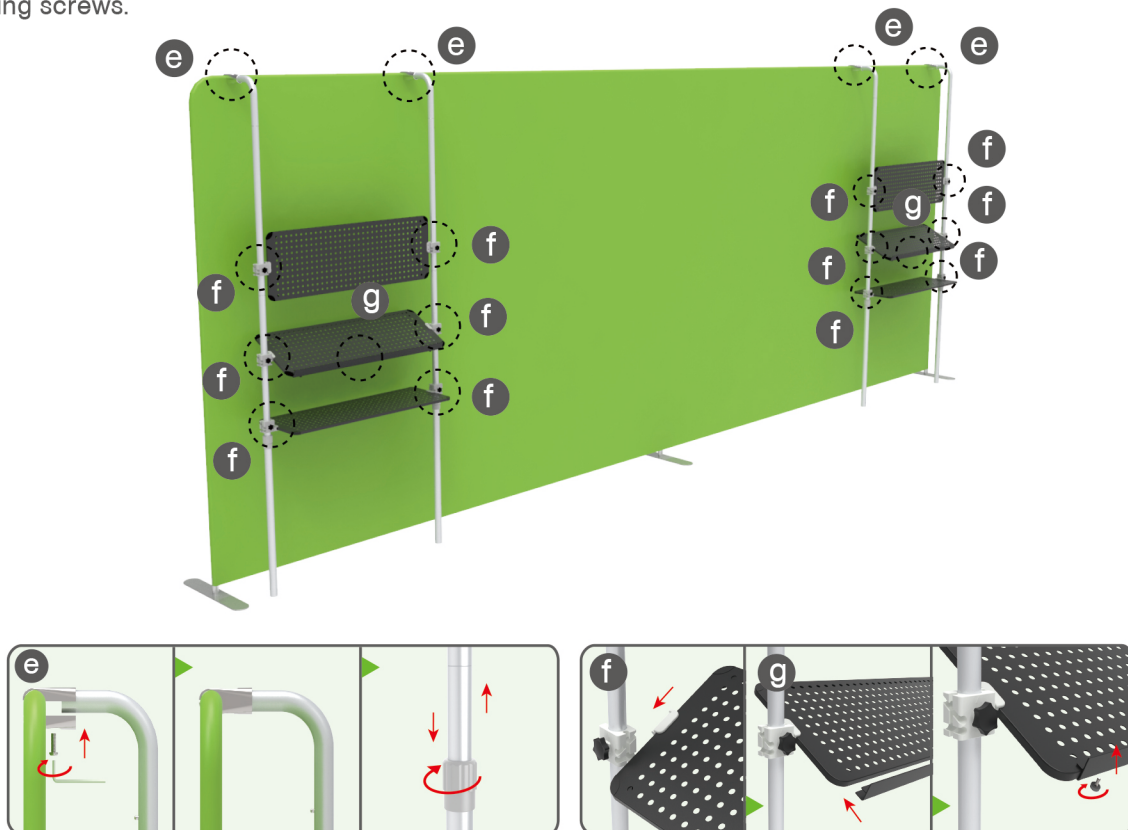
## STEP 02

Connect to make long poles according to labelings, slide three-way clips onto long poles, insert short curved poles onto their top by pressing their knobs.



## STEP 03

Connect long poles and display stand with clamps, adjust their height properly as needed by loosening and tightening screws.

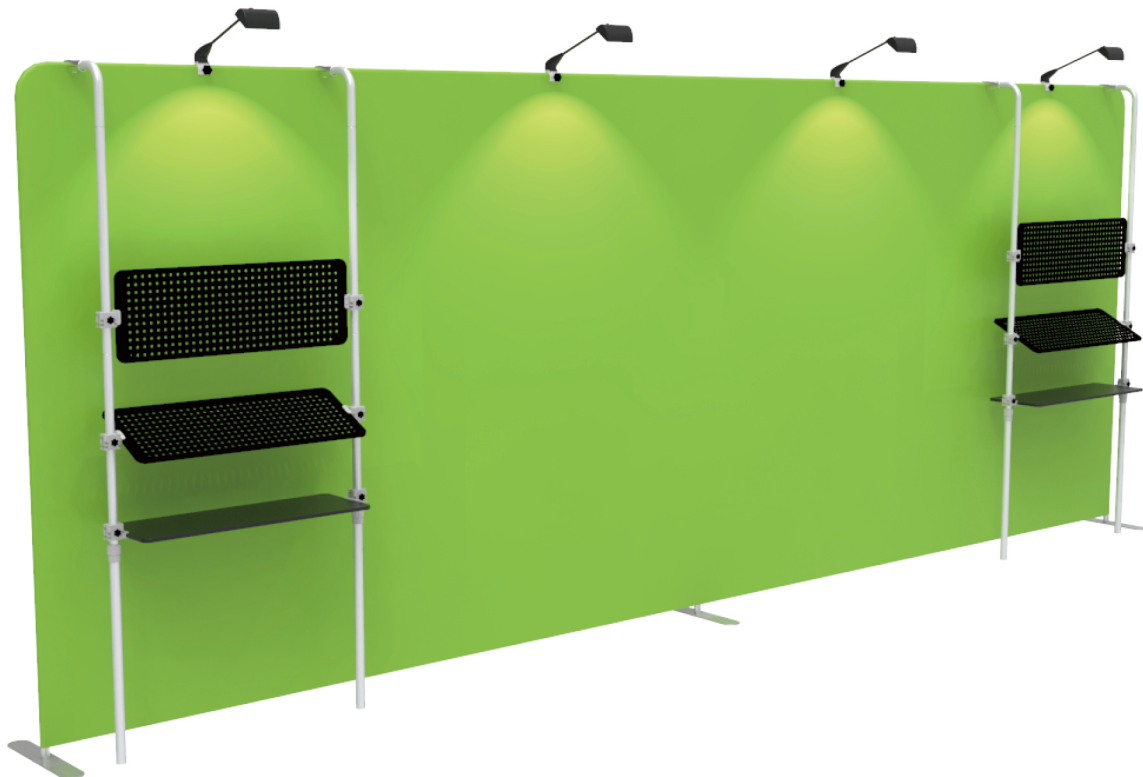
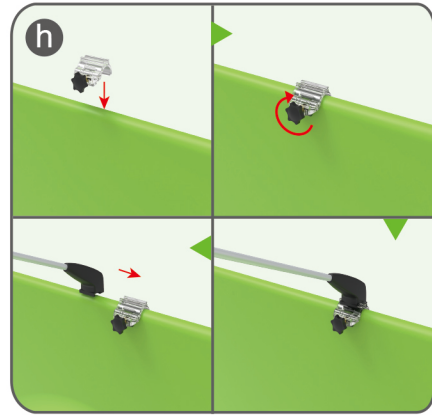
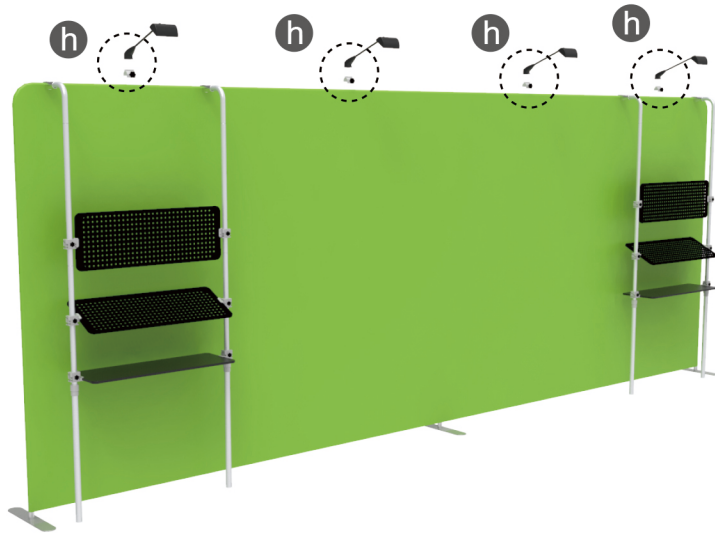


Clip into hanging boards based on directions of three-way clips & tightening with thumb screws, clip F-shaped bar onto hanging board with thumb screws.



## STEPS

**STEP 04** Screw light clips at top of display stands, slide lights onto them and adjust their direction.



10X20FT-BOOTH-M

## STEPS

(1) Durable Plastic Hard Case, Aluminum Support Poles

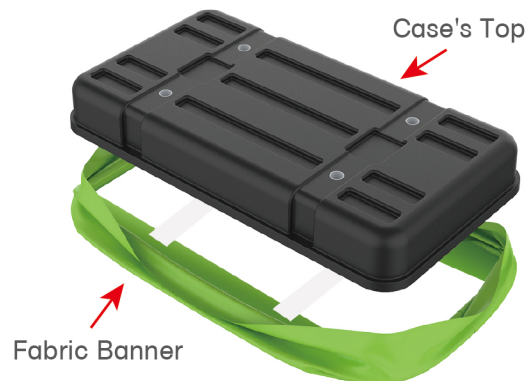


(2) Printed Graphic Fabric Banner



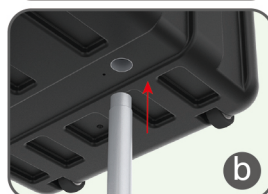
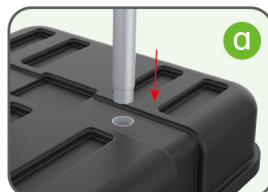
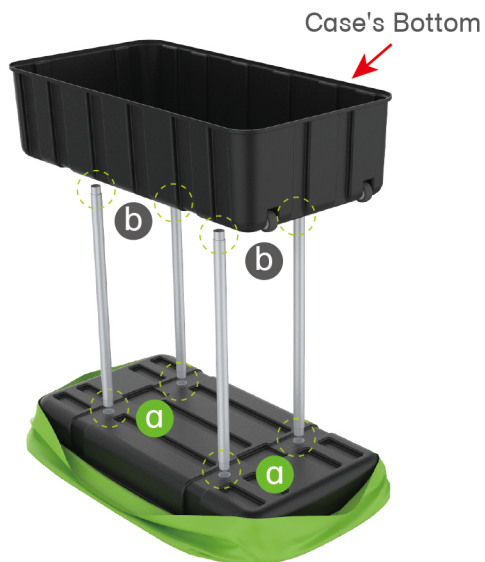
## STEP 01

Put hard case's top into fabric banner.



## STEP 02

Insert support poles into hard case's top &amp; bottom.



## STEPS

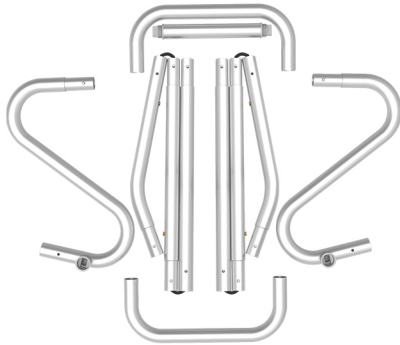
## STEP 04

Wrap fabric banner from bottom to top & twist it to be smooth, lay hard case's intermediate panel on podium's top.



## STEPS

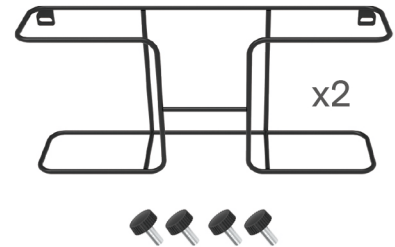
(1) Snap Tubes



(2) Printed fabric banner

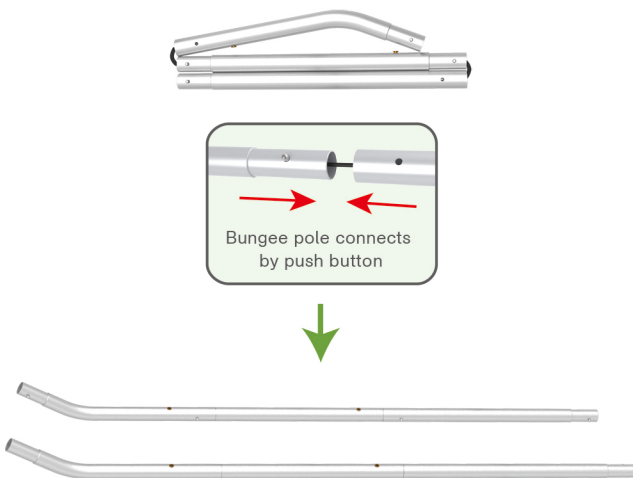


(3) Brochure rack x 2  
Screws x 4



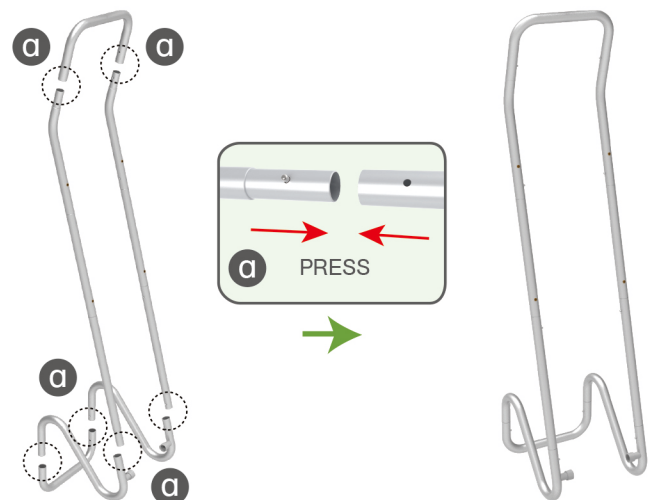
### STEP 01

To Connect the tubes according to the labellings



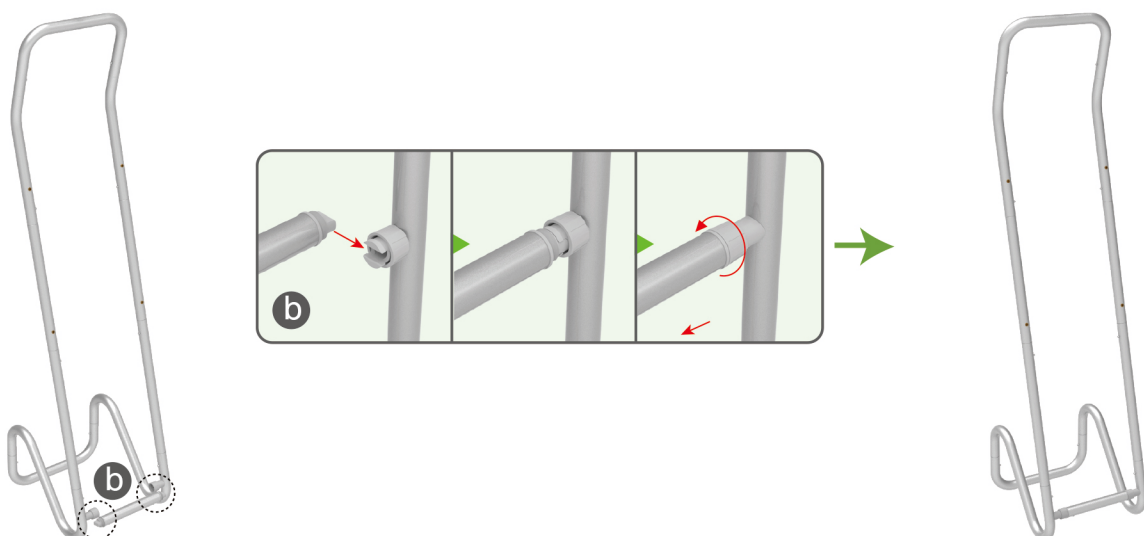
### STEP 02

To connect 2 long side tubes by the corner pieces



### STEP 03

To install the cross bar according to labellings

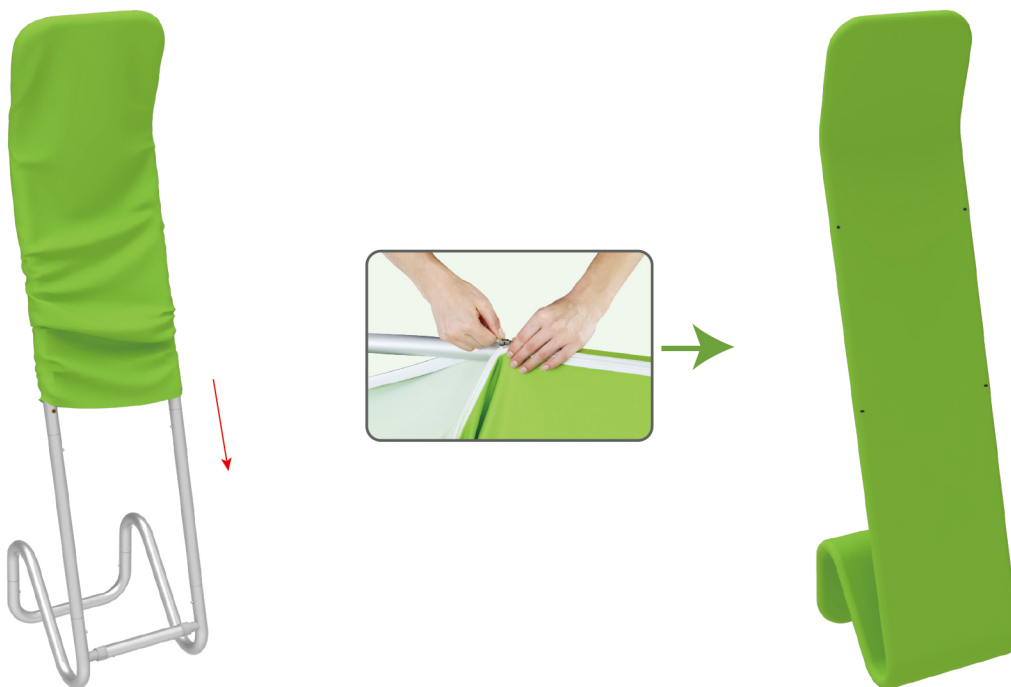




## STEPS

## STEP 04

To Wrap up the fabric banner from top to bottom and zip up.



## STEP 05

To install 2 racks by screws in position

