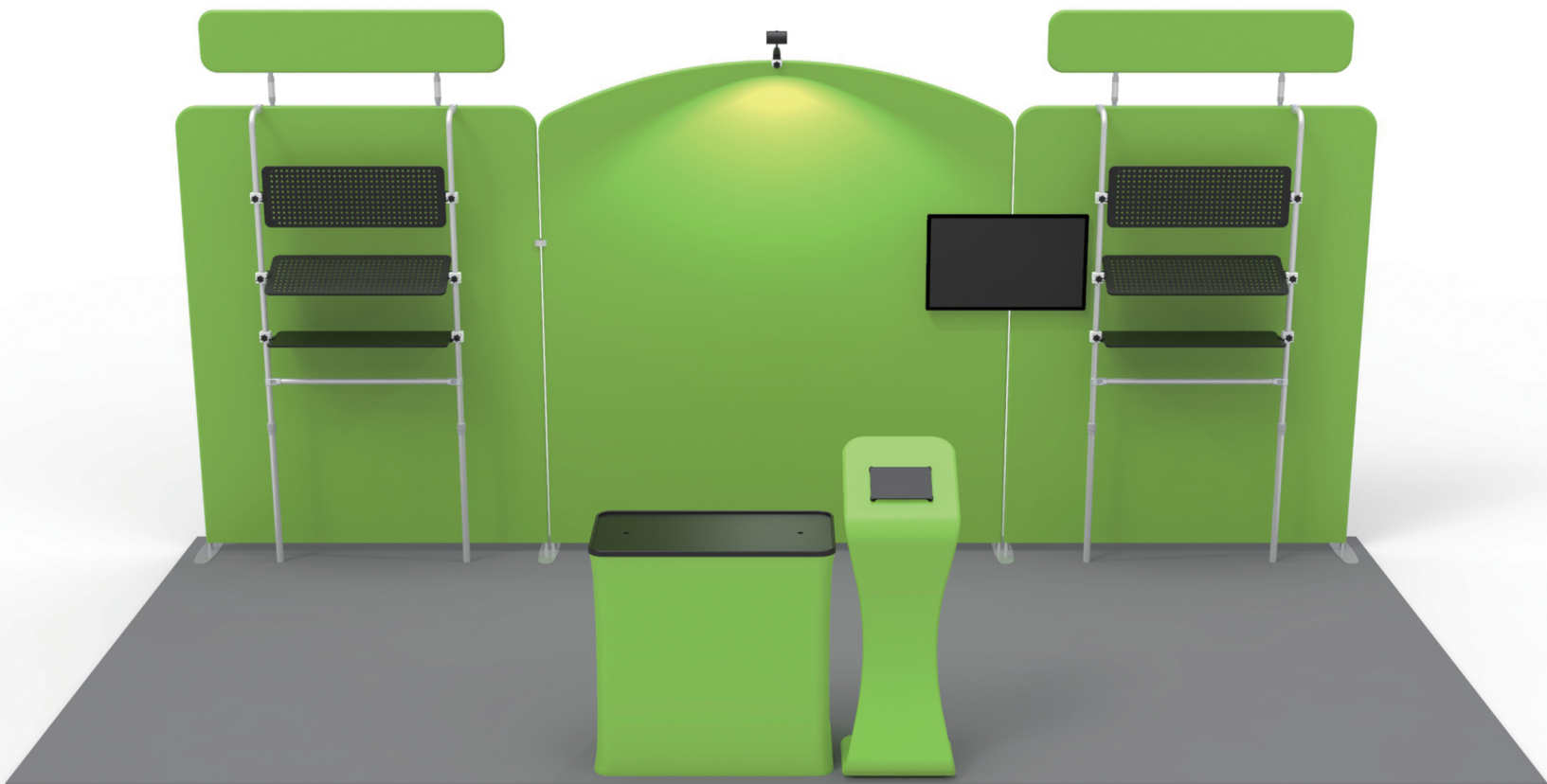


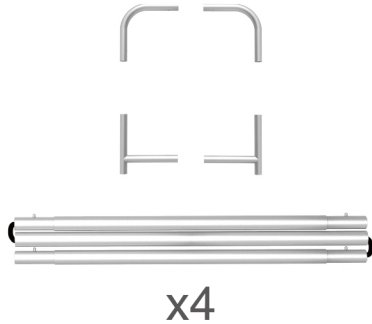
# INSTRUCTION



**10X20FT-BOOTH-19**

## STEPS

(1) Hardware

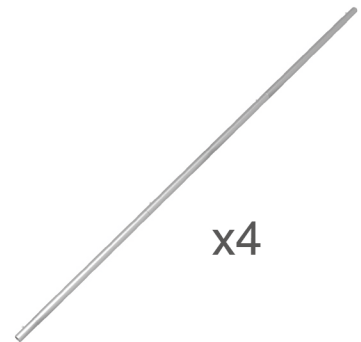
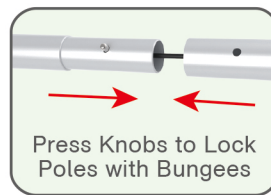
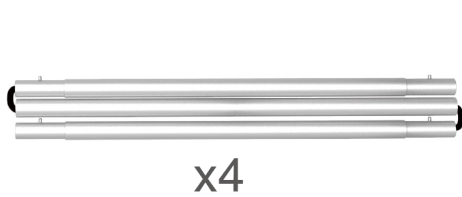


(2) Printed Graphic Fabric Banner (Optional)



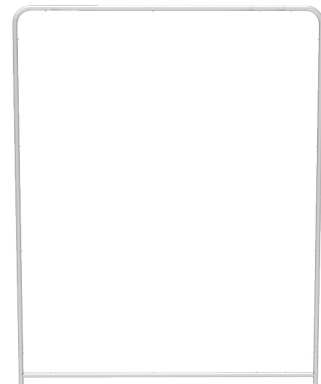
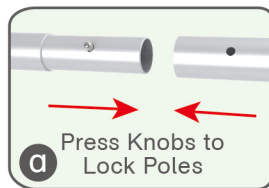
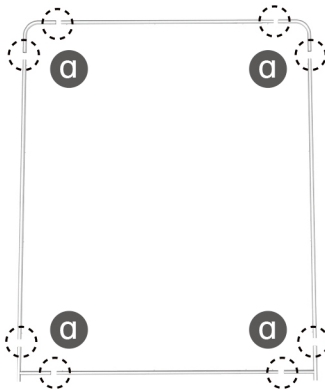
## STEP 01

Connect to make long poles according to labelings.



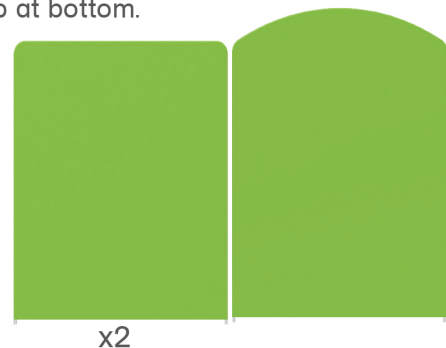
## STEP 02

Connect long poles with corner poles according to labelings.



## STEP 03

Slide fabric banner on frame from top and zip up at bottom.



Same Steps for Other Display Stands

## STEPS

## (1) Hardware

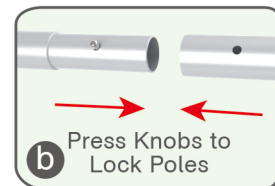
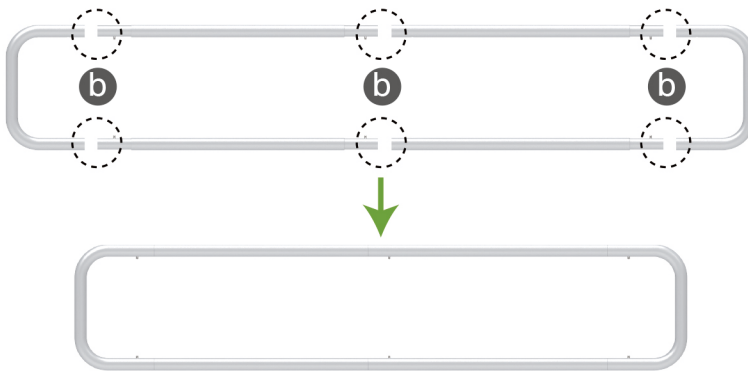


## (2) Printed Graphic Fabric Banner (Optional)



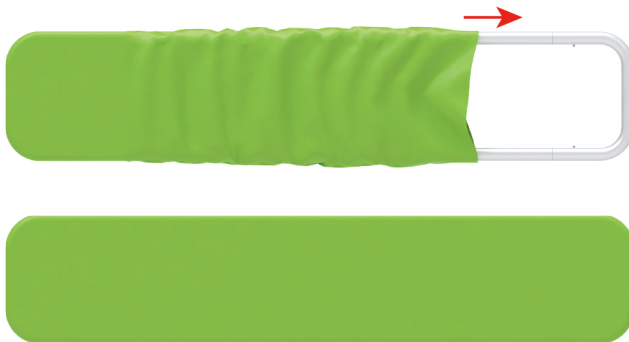
## STEP 01

Connect poles according to labelings.

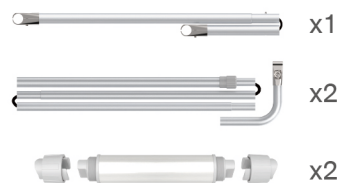


## STEP 02

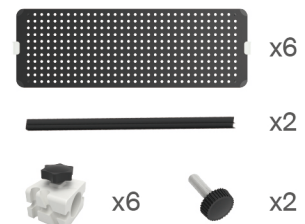
Slide fabric banner on frame from left and zip up at right.



## Booth Set Assembly



## (1) Shelving Board



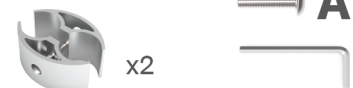
## (2) Base



## (3) LED Light &amp; Clip

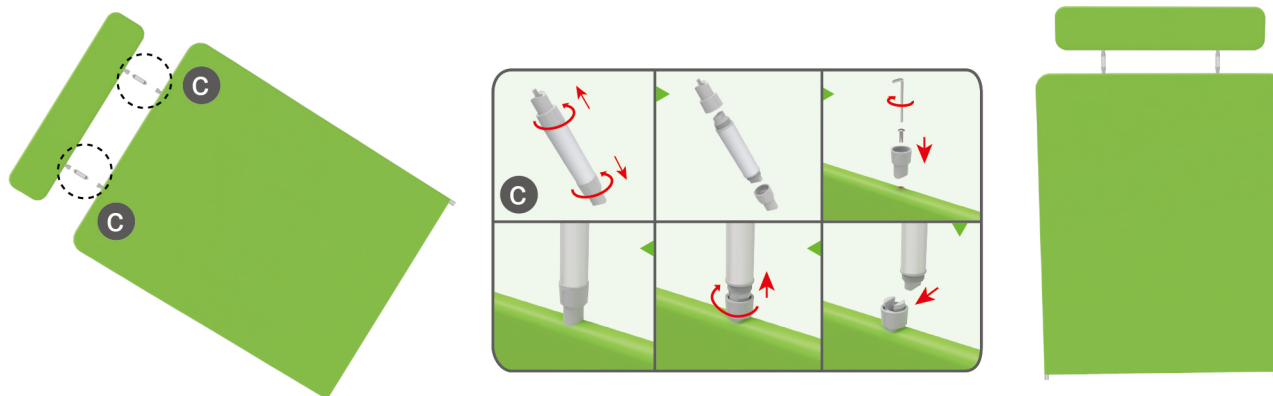


## (4) 180° C-Shaped Clip

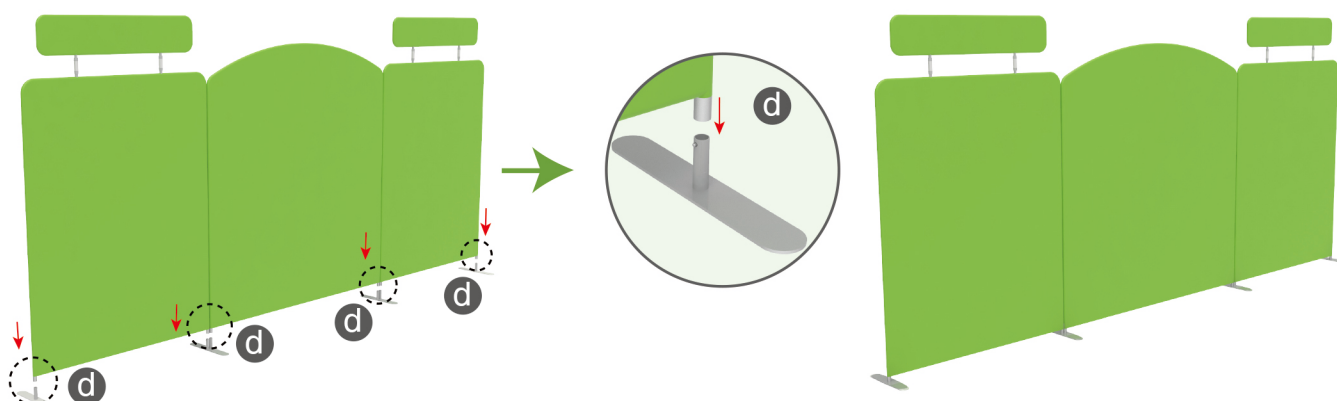


## STEPS

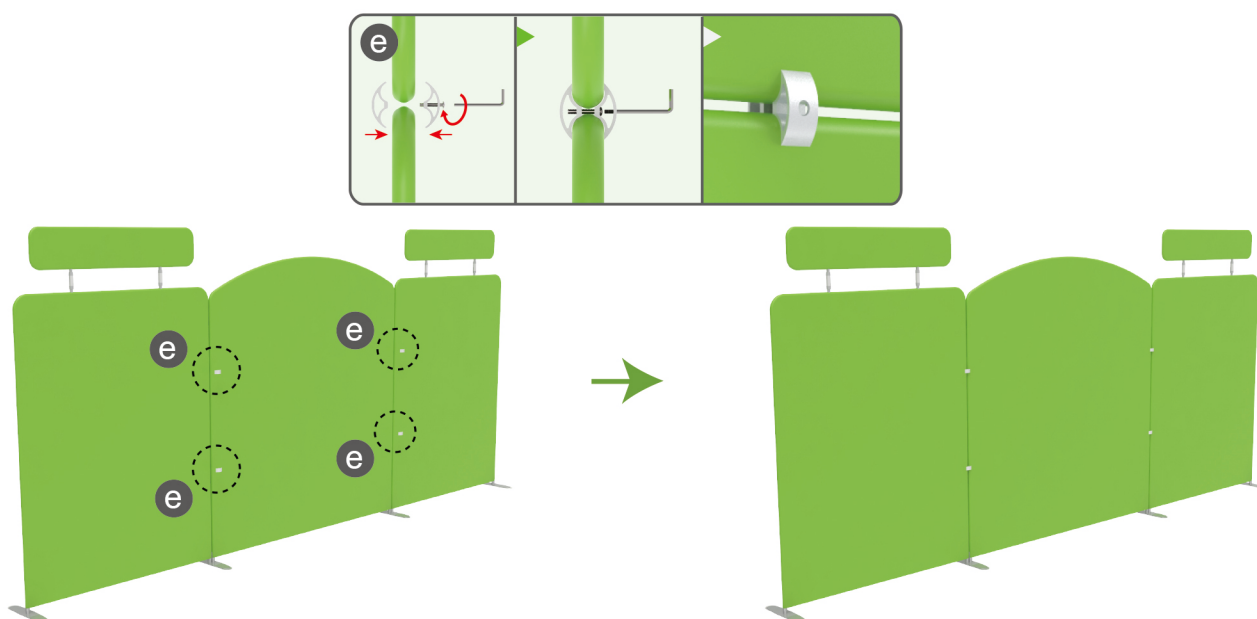
**STEP 01** Connect header and display stand with support poles.



**STEP 02** Insert display stands onto feet by pressing their knobs, interconnect display stands with C-shaped clips.



**STEP 01** Connect header and display stand with support poles.

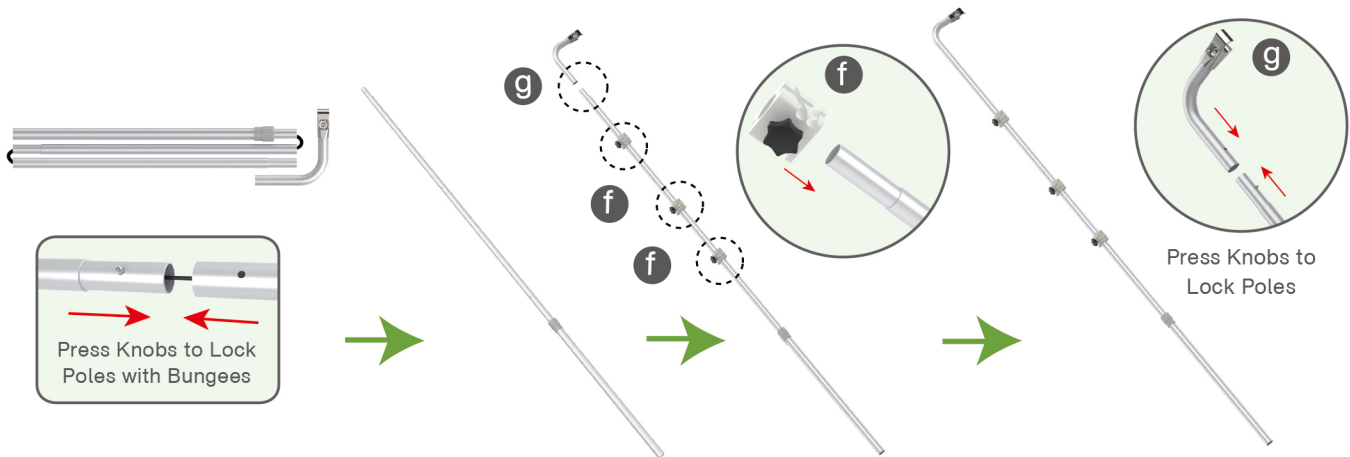




## STEPS

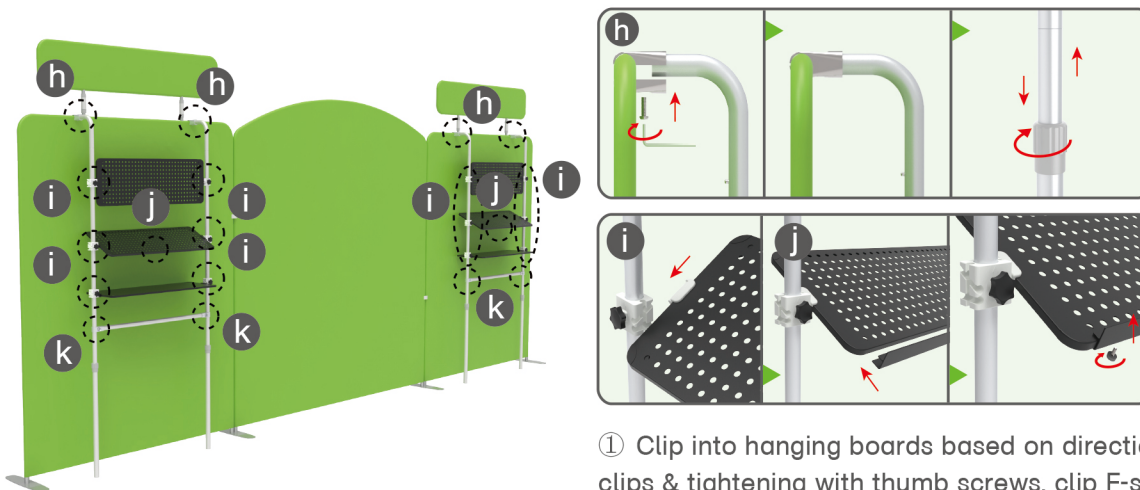
## STEP 03

Connect to make long poles according to labelings, slide three-way clips onto long poles, insert short curved poles onto their top by pressing their knobs.



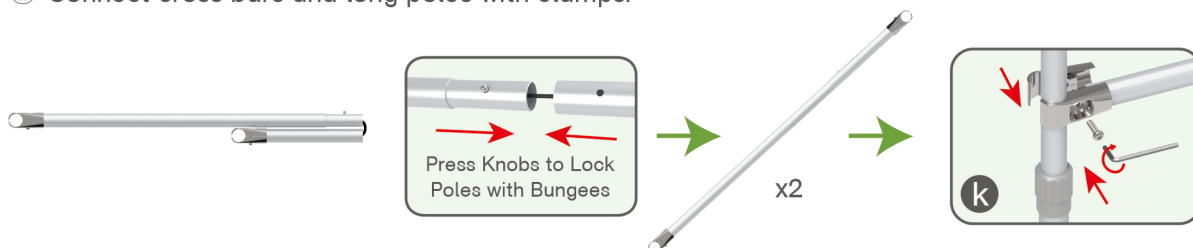
## STEP 04

Connect long poles and display stand with clamps, adjust their height properly as needed by loosening and tightening screws.

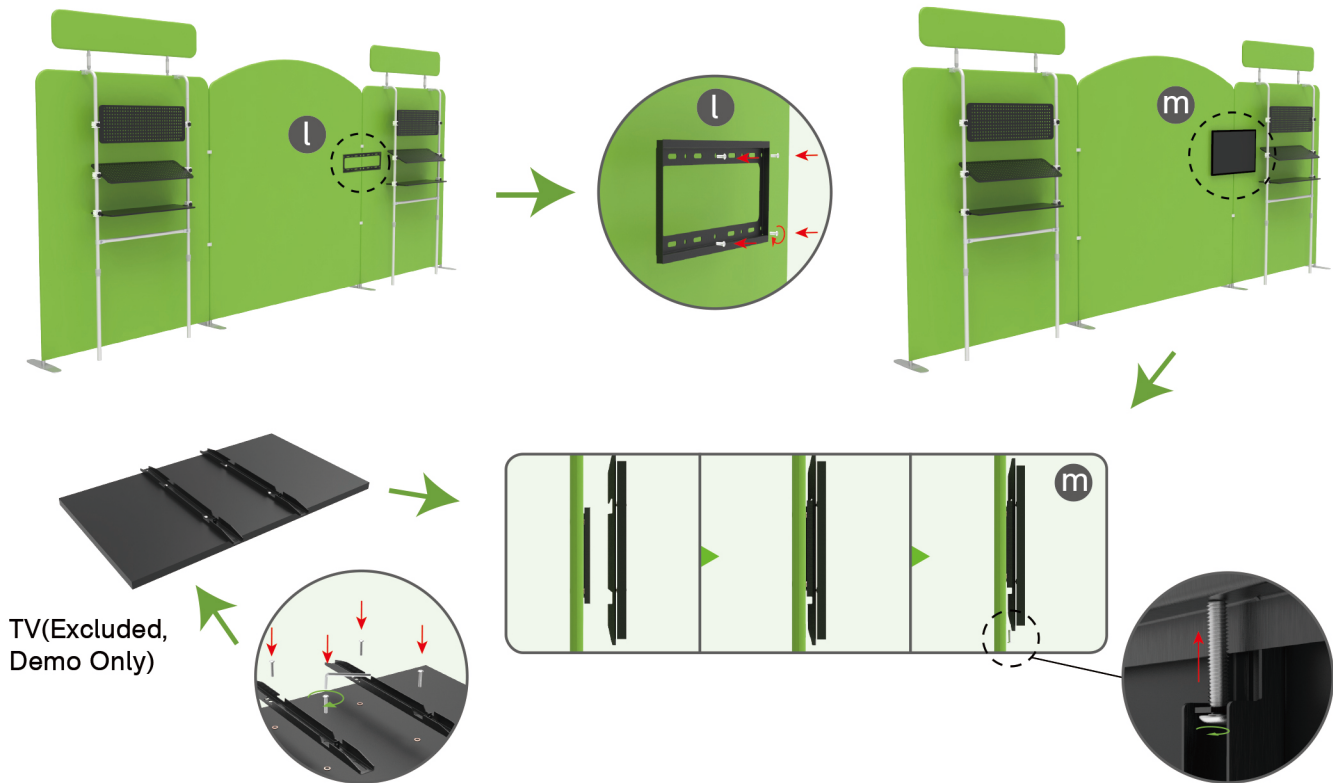
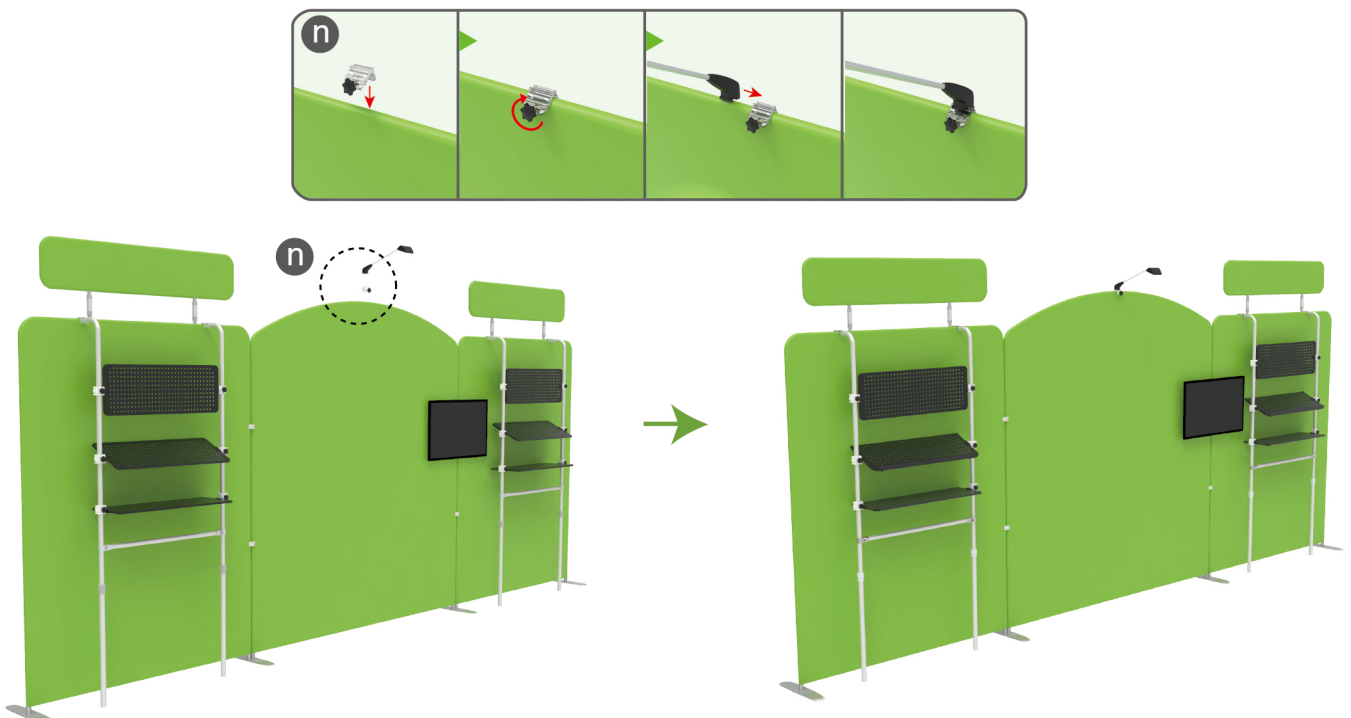


① Clip into hanging boards based on directions of three-way clips & tightening with thumb screws, clip F-shaped bar onto hanging board with thumb screws.

② Connect cross bars and long poles with clamps.



## STEPS

**STEP 04** Screw TV mount with hex wrench.**STEP 05** Screw light clips at top of display stands, slide lights onto them and adjust their direction.

**STEPS****10X20FT-BOOTH-19**

## STEPS

(1) Durable Plastic Hard Case, Aluminum Support Poles

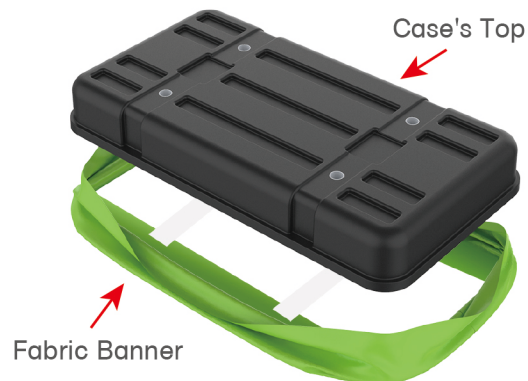


(2) Printed Graphic Fabric Banner



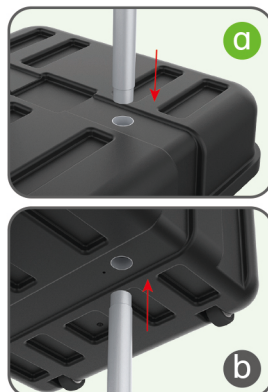
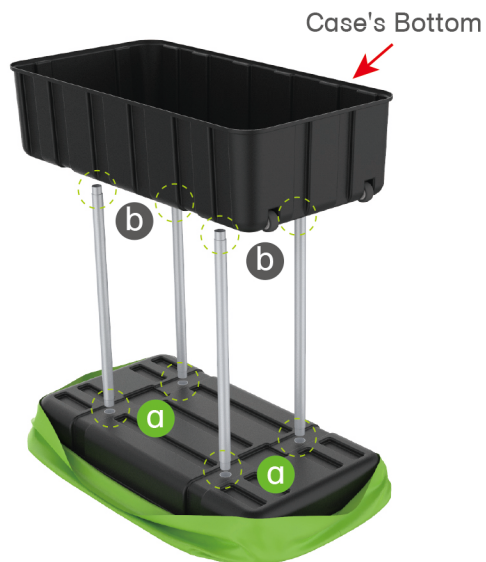
## STEP 01

Put hard case's top into fabric banner.



## STEP 02

Insert support poles into hard case's top &amp; bottom.





## STEPS

## STEP 04

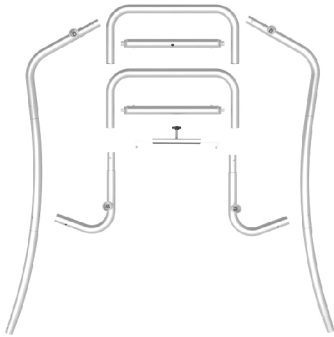
Wrap fabric banner from bottom to top & twist it to be smooth, lay hard case's intermediate panel on podium's top.





★ One Tool (Hex Wrench) **STEPS**

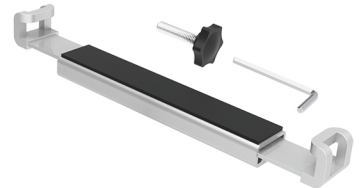
(1) Snap Tubes



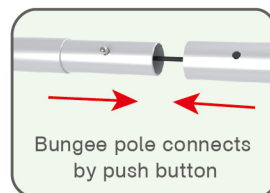
(2) Printed fabric banner



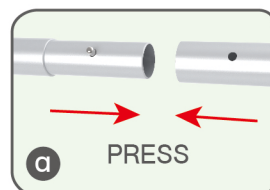
(3) Tablet PC holder

**STEP 01**

To Connect the tubes according to the labellings

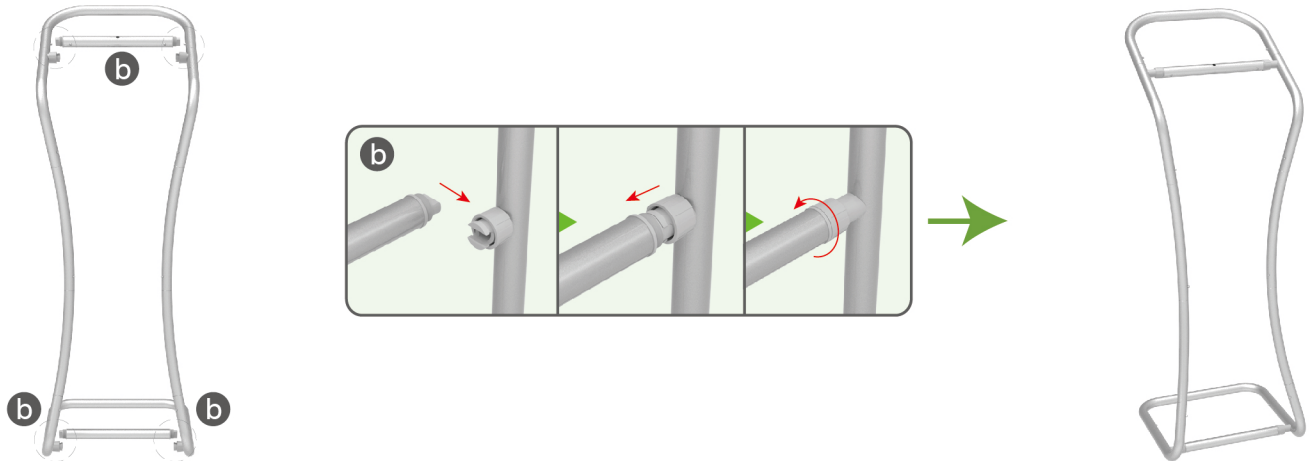
**STEP 02**

To connect 2 long side tubes by the corner pieces

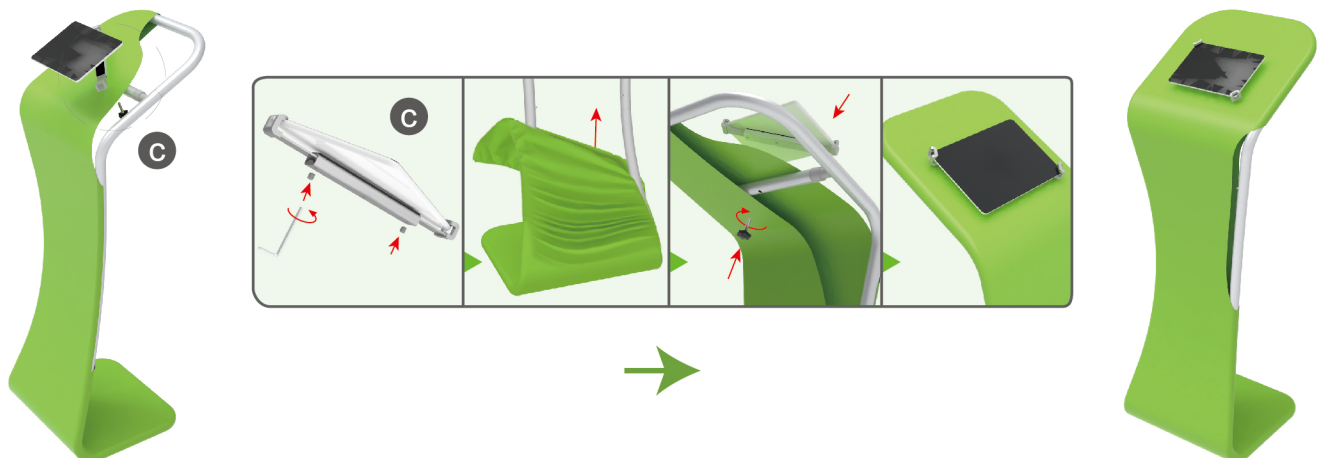


**STEPS****STEP 03**

To install the cross bar according to labellings

**STEP 04**

To wrap the fabric cover from top to bottom and zip to the middle of frame, then put the iPad in the holder and adjust the holder to right size and lock it by Allen Key Afterwards, install the set to the display stand.

**STEP 05**

Zip up completely

