

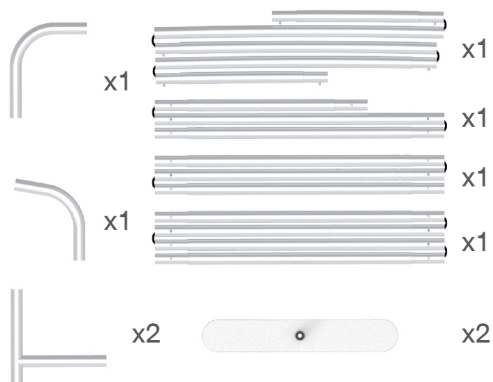
INSTRUCTION



10X20FT-BOOTH-Q

STEPS

(1) Hardware

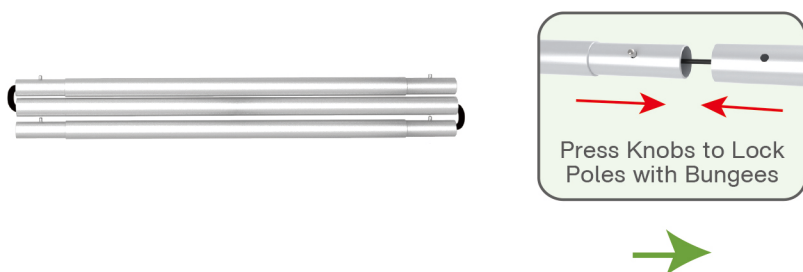


(2) Printed Graphic Fabric Banner (Optional)



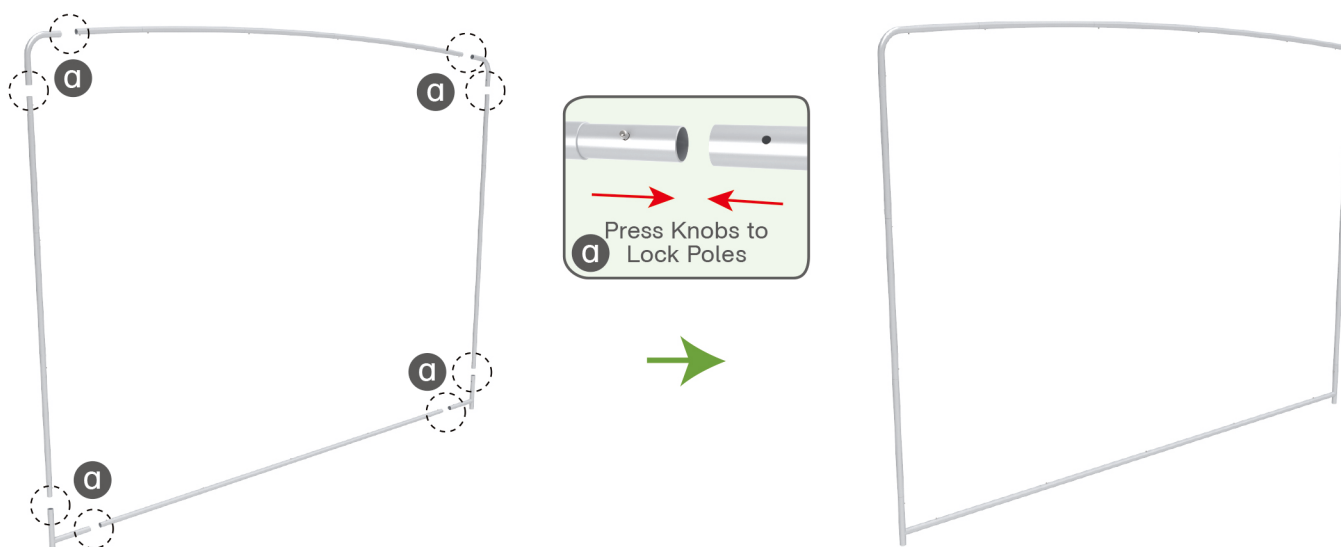
STEP 01

Connect to make long poles according to labelings.



STEP 02

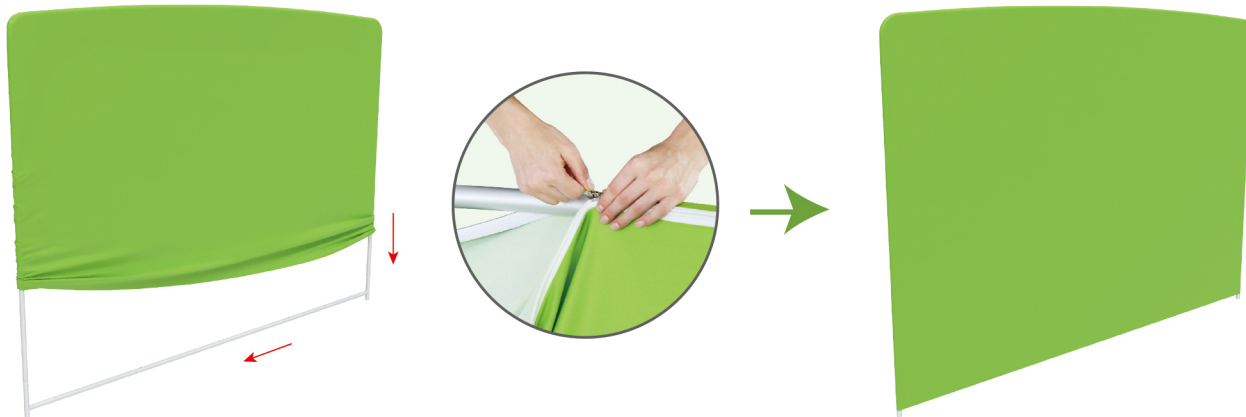
Connect long poles with corner poles according to labelings, connect support pole onto frame.



STEPS

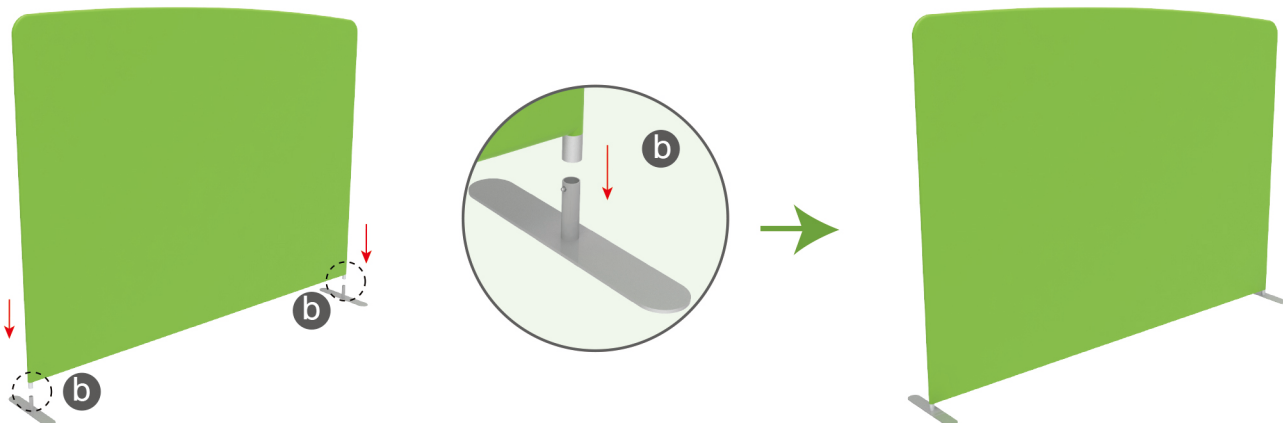
STEP 03

Slide fabric banner on frame from top and zip up at bottom.

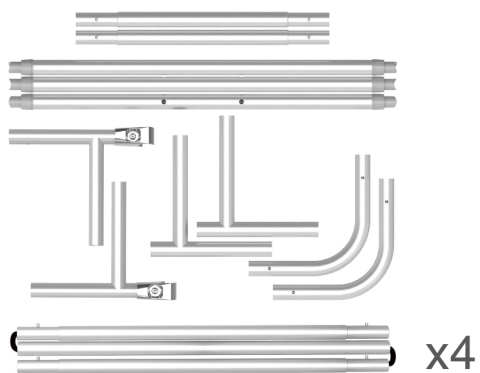


STEP 04

Insert display stand onto feet by pressing their knobs.



(1) Hardware



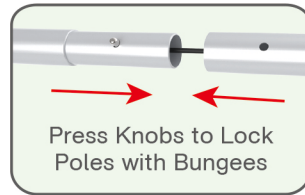
(2) Printed Graphic Fabric Banner (Optional)



STEPS

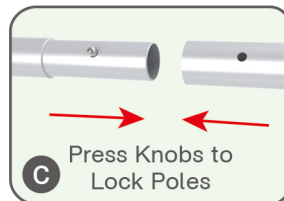
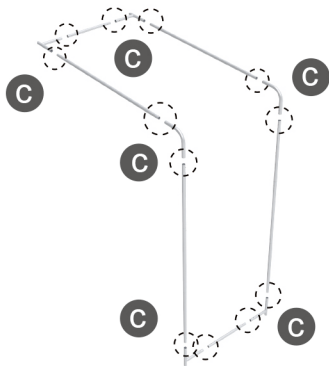
STEP 01

Connect to make long poles according to labelings.



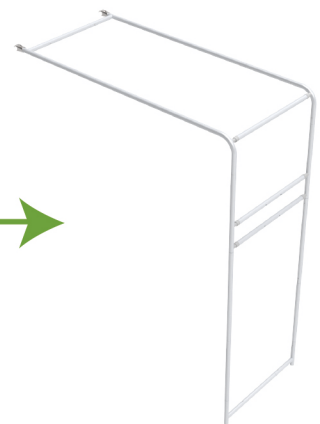
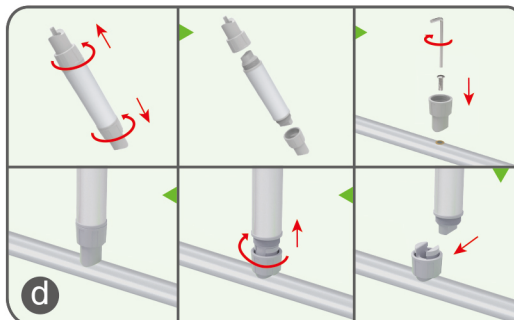
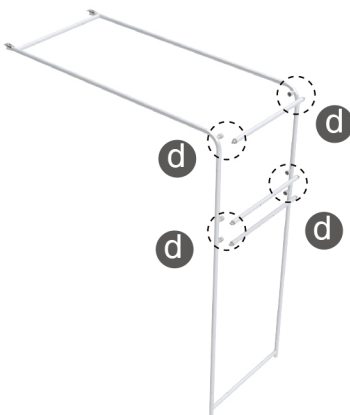
STEP 02

Connect long poles with corner poles according to labelings.



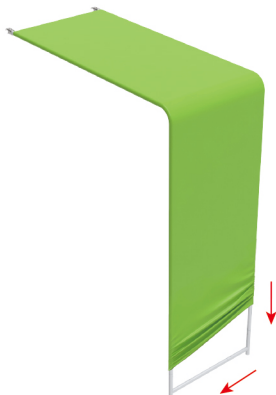
STEP 03

Connect support poles onto frame.



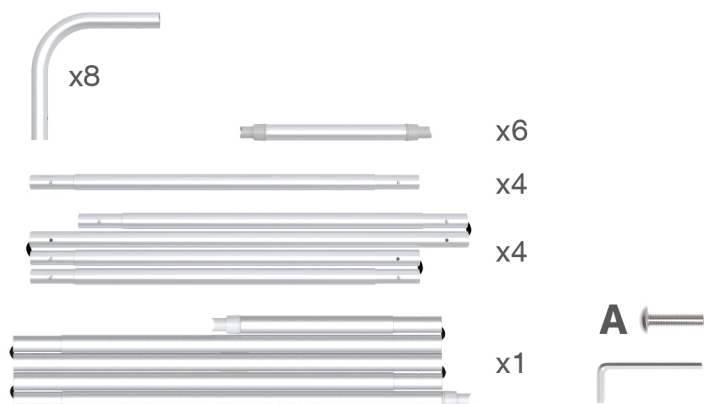
STEP 04

Slide fabric banner on frame from top and zip up at bottom.



STEPS

(1) Hardware

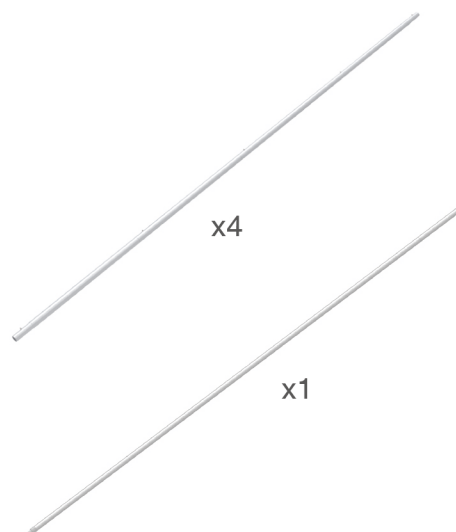
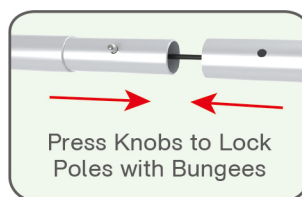


(2) Printed Graphic Fabric Banner (Optional)



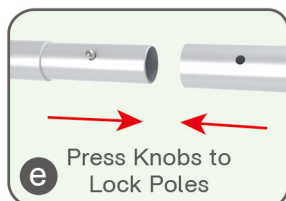
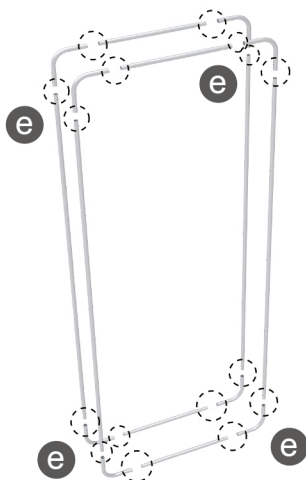
STEP 01

Connect to make long poles according to labelings.



STEP 02

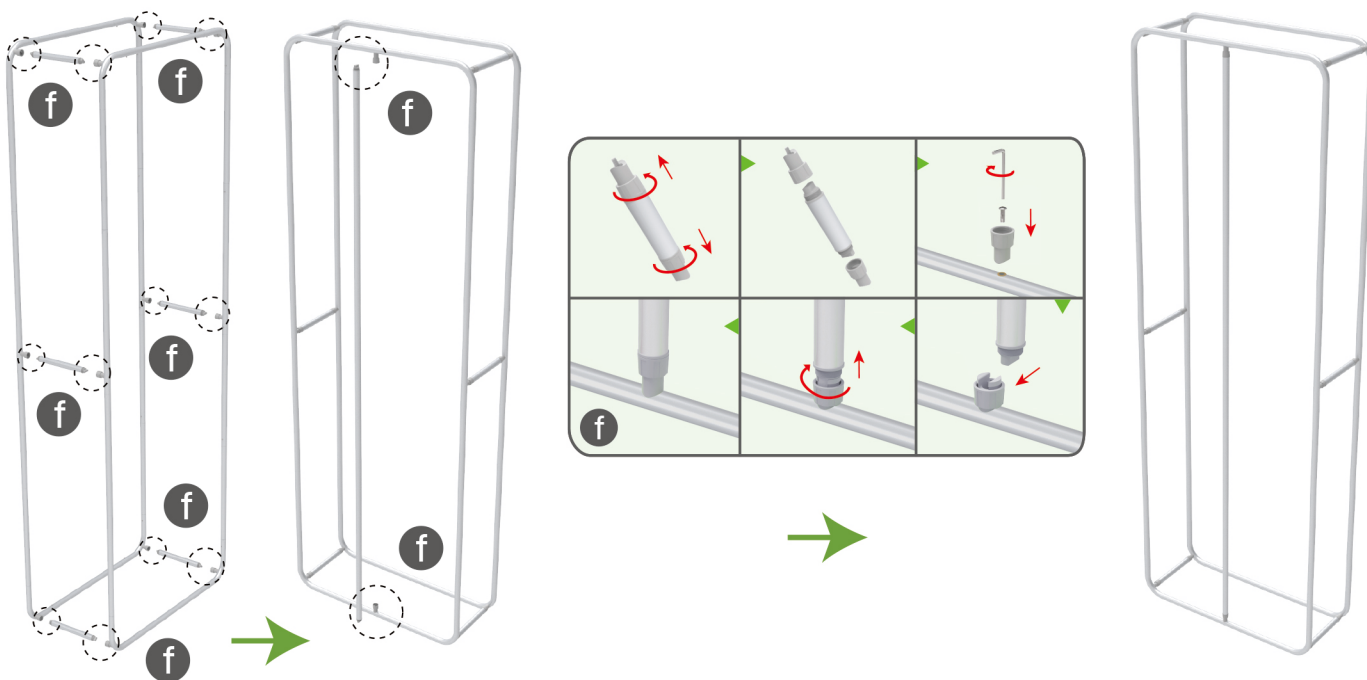
Connect long poles with corner poles according to labelings.



STEPS

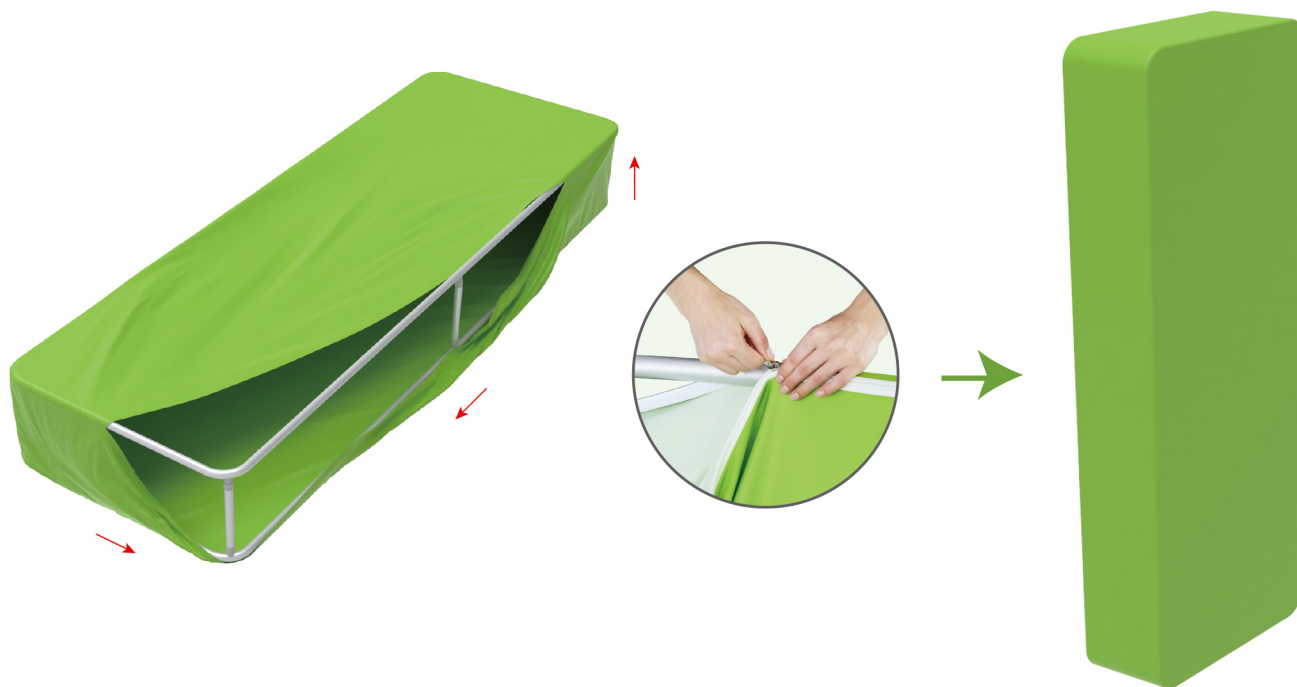
STEP 03

Connect support poles onto column frame.



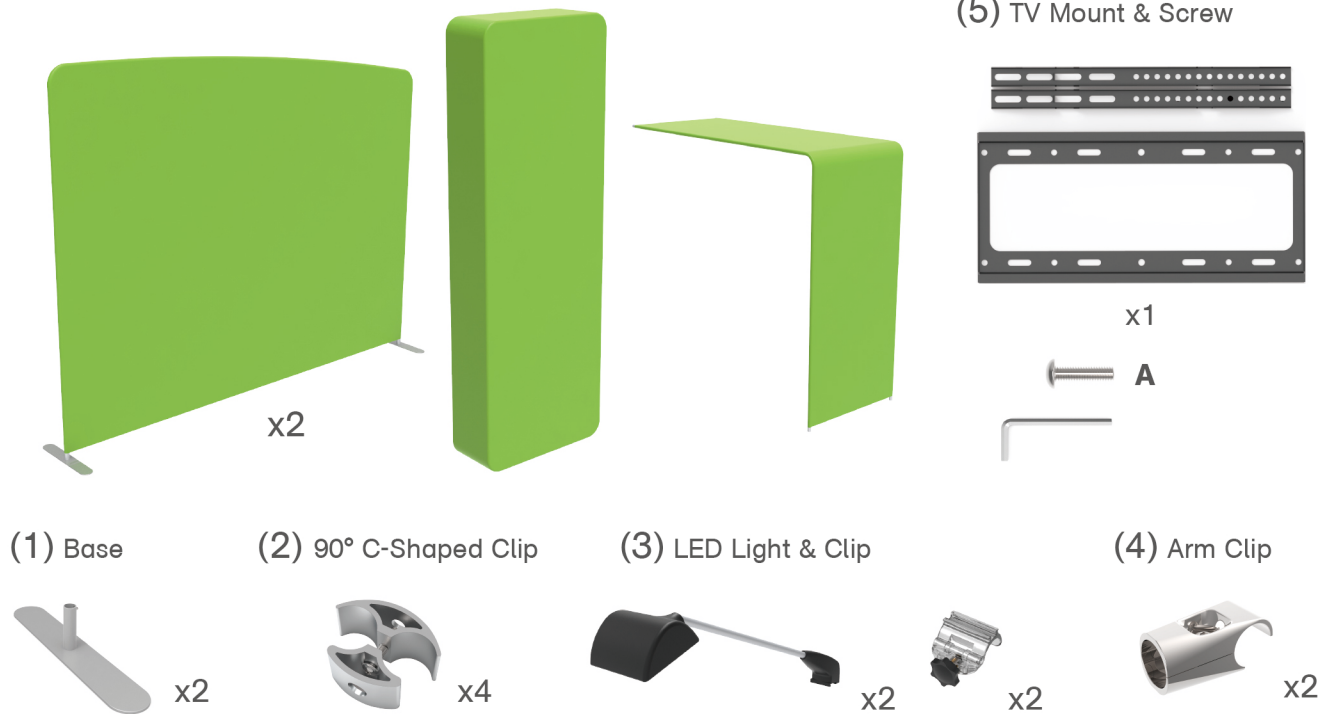
STEP 04

Slide fabric banner on frame from top and zip up at bottom.



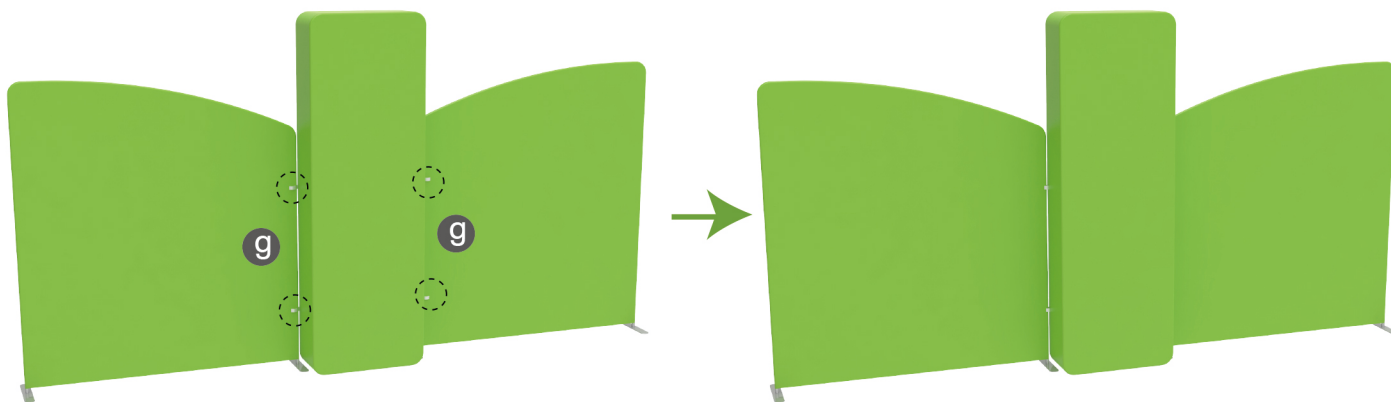
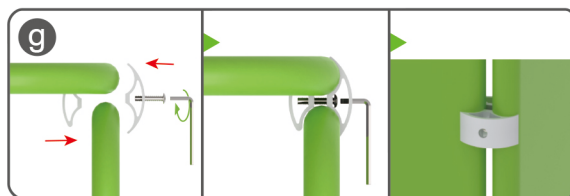
STEPS

Booth Set Assembly



STEP 01

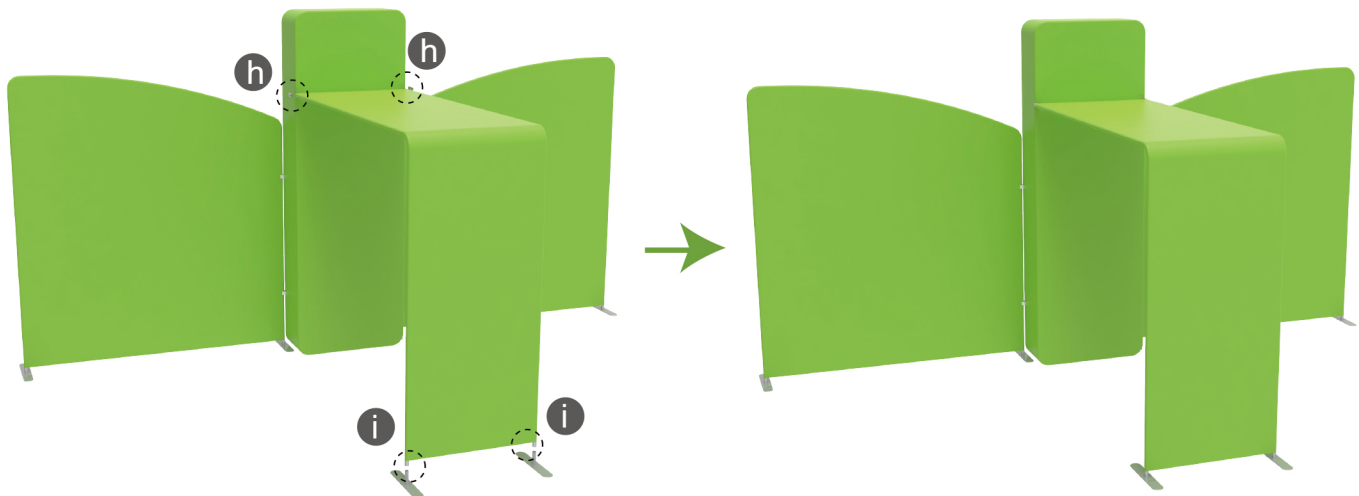
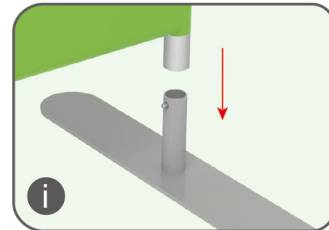
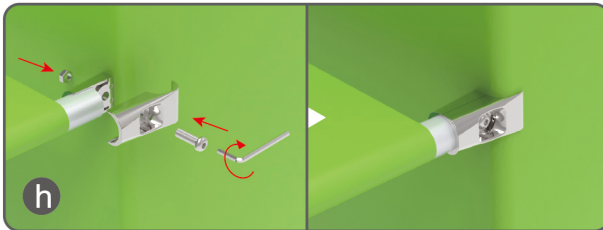
Interconnect display stands with C-shaped clips.



STEPS

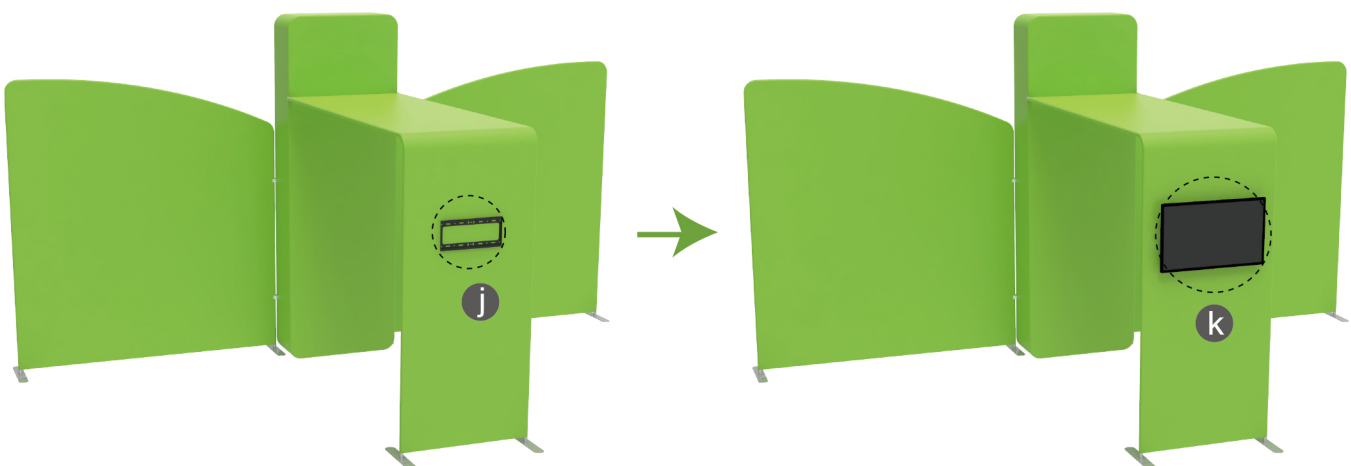
STEP 02

Connect display stands with arm clips and Insert display stands onto feet by pressing their knobs.

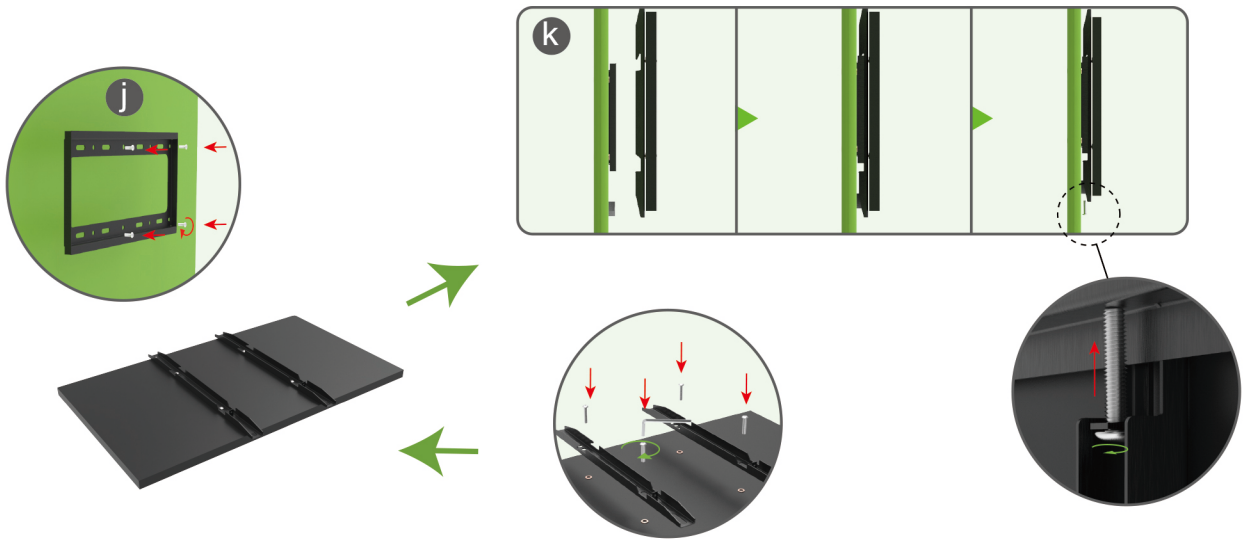


STEP 03

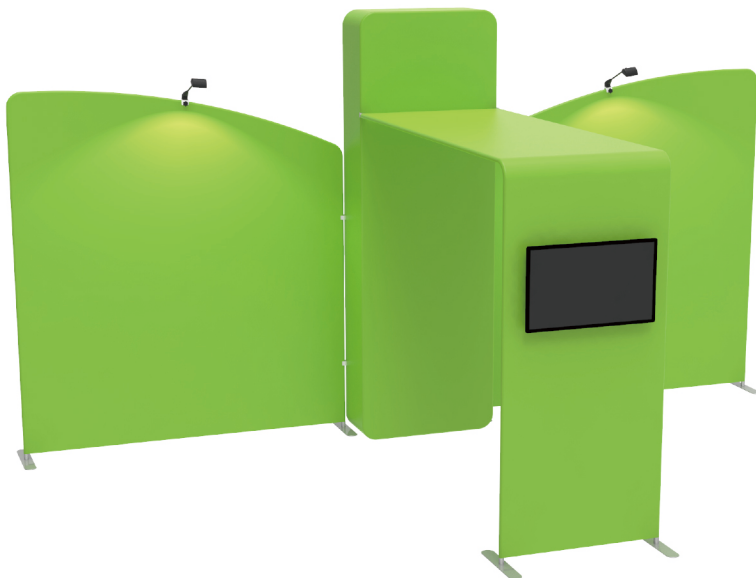
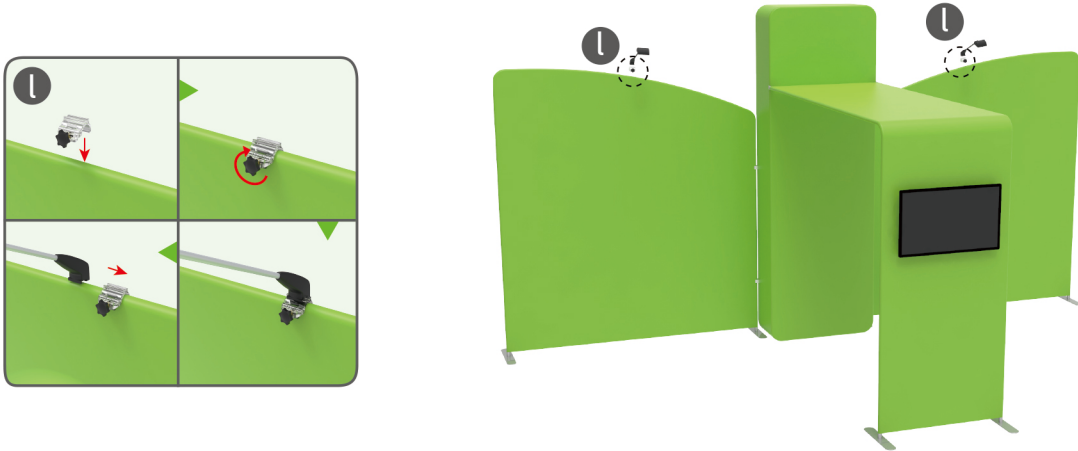
Screw TV mount with hex wrench.



STEPS



STEP 04 Screw light clips at top of display stands, slide lights onto them and adjust their direction.



10X20FT-BOOTH-Q

STEPS

(1) Durable Plastic Hard Case, Aluminum Support Poles

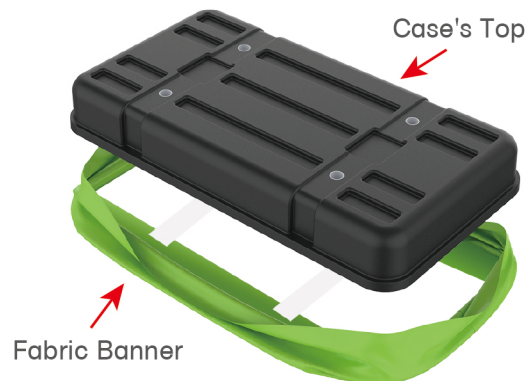


(2) Printed Graphic Fabric Banner



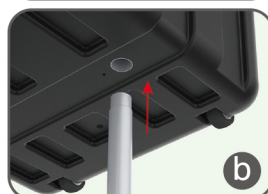
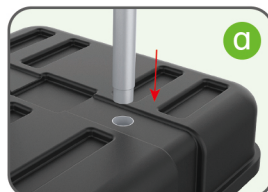
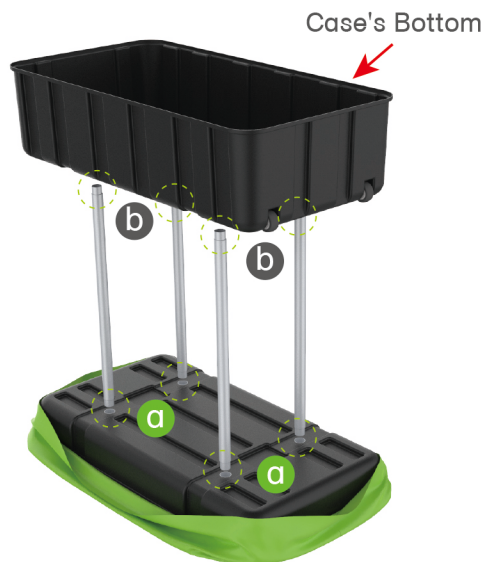
STEP 01

Put hard case's top into fabric banner.



STEP 02

Insert support poles into hard case's top & bottom.



STEPS

STEP 04

Wrap fabric banner from bottom to top & twist it to be smooth, lay hard case's intermediate panel on podium's top.

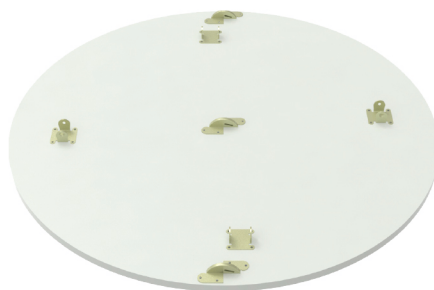


STEPS

(1) Hardware



(2) Countertop Panel



(3) Fixing Accessory

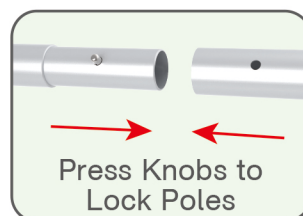


(4) Printed Graphic Fabric Banner



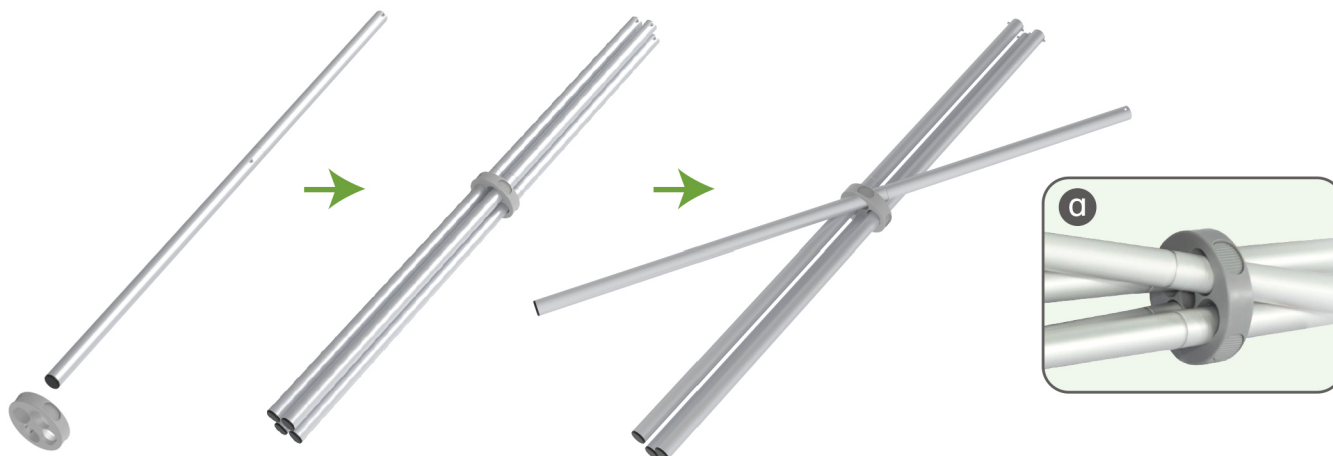
STEP 01

Connect to make long poles according to labelings.



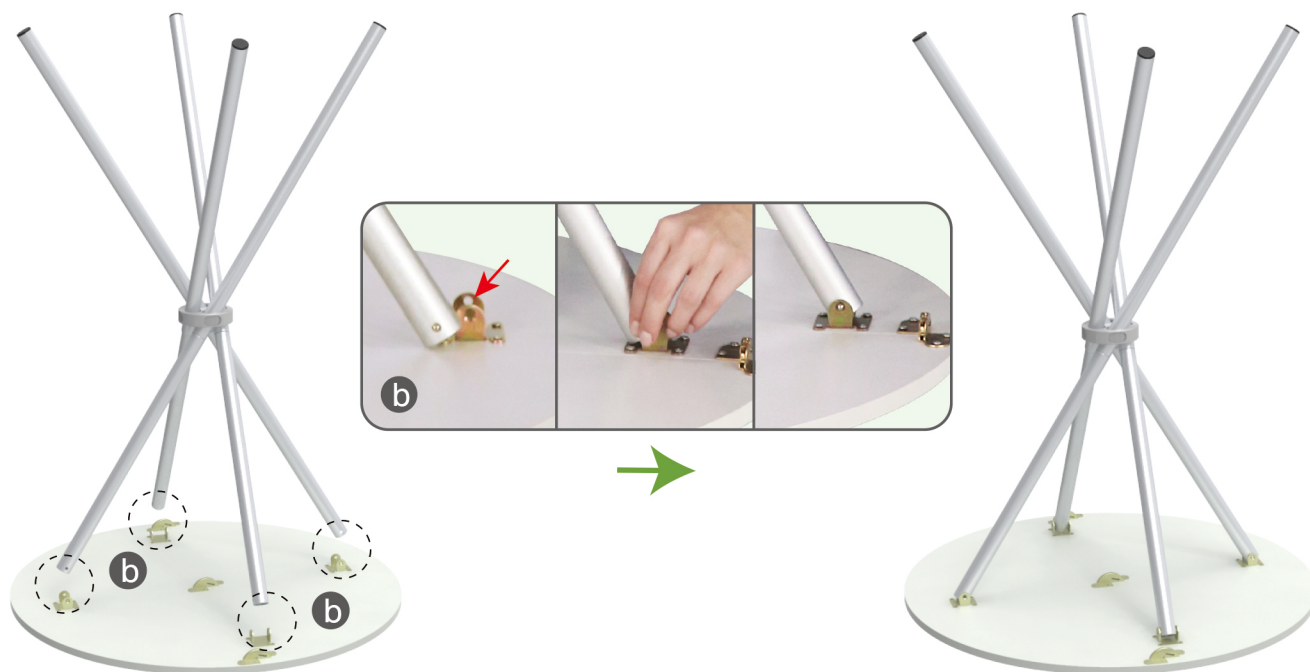
STEP 02

Insert poles into fixing accessory until you hear a 'Ding' sound to make poles' knobs clip into it & its concave parts pop out.

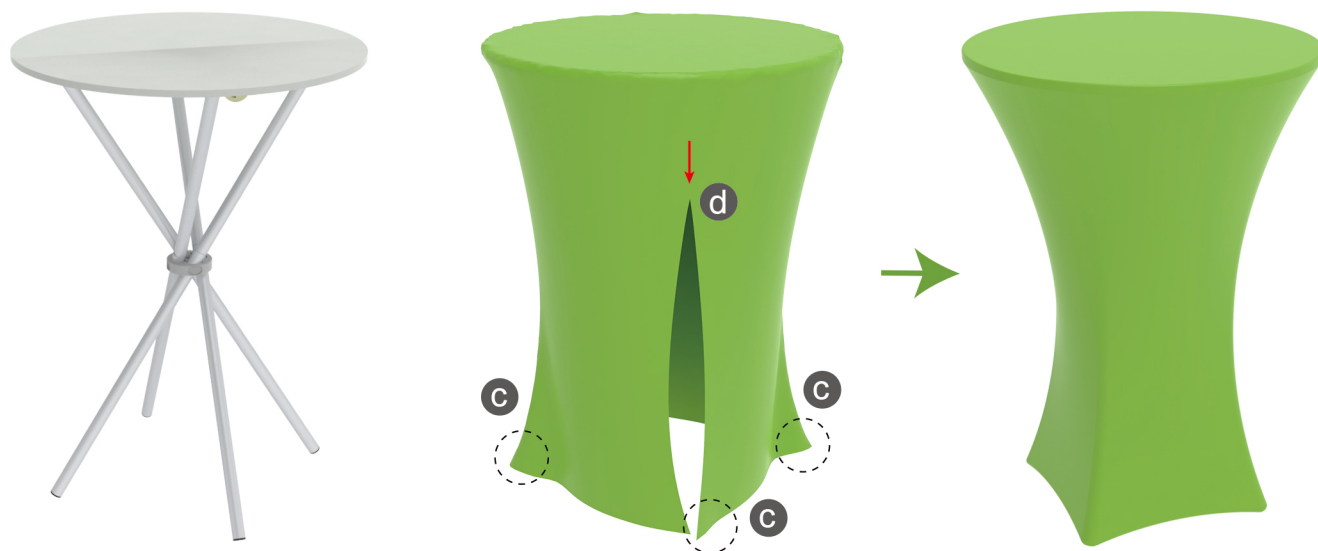
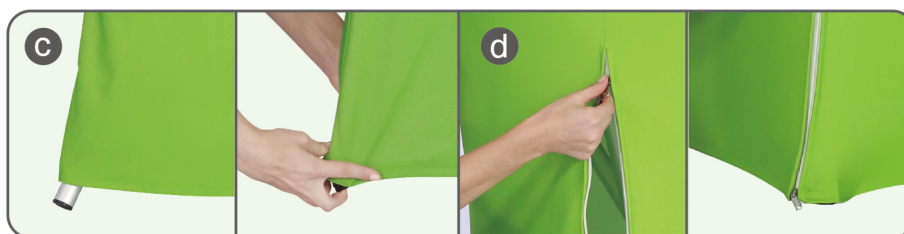


STEPS

STEP 03 Press poles' knobs to clip into countertop's slot.

**STEP 04**

Wrap fabric banner from top to bottom, put poles into pockets & zip up.

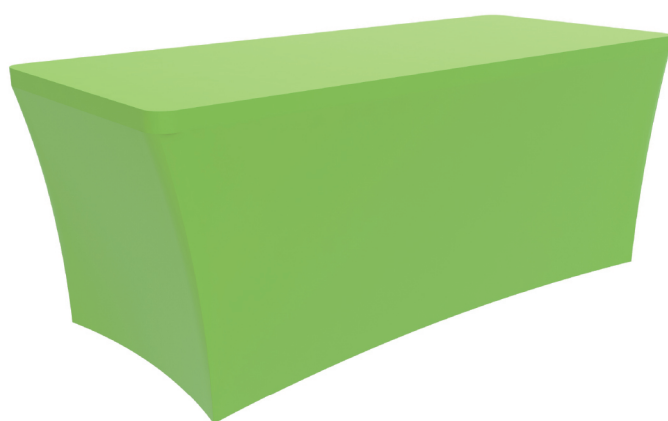
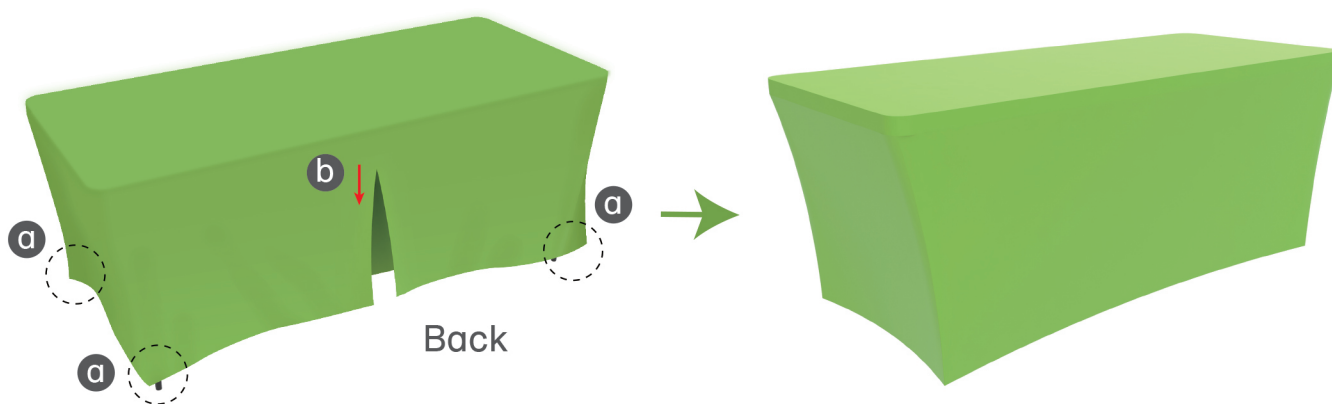
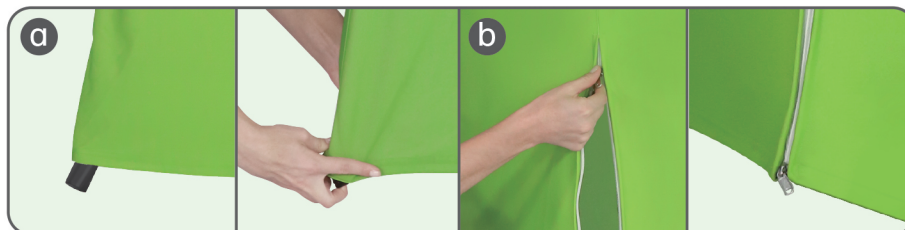


STEPS

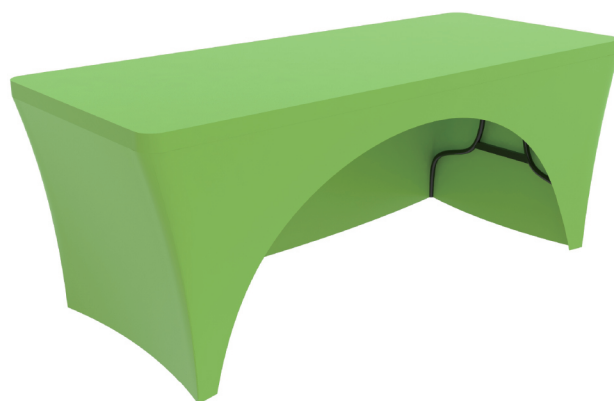
Stretch Fit Table Cover

STEP 01

Wrap table with stretch fit table cover from top to bottom, put its legs into pockets & zip up (if applicable).



TT-S-04/6/8S



TT-O-04/6/8S