

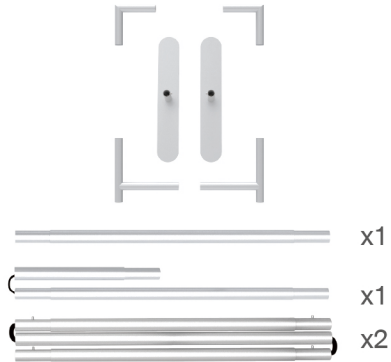
INSTRUCTION



10X10FT-BOOTH-23

STEPS

(1) Hardware

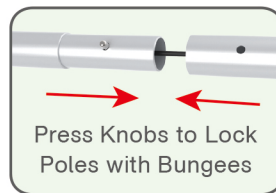


(2) Printed Graphic Fabric Banner (Optional)



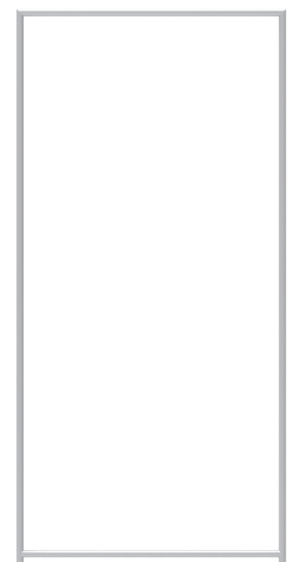
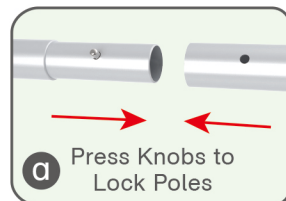
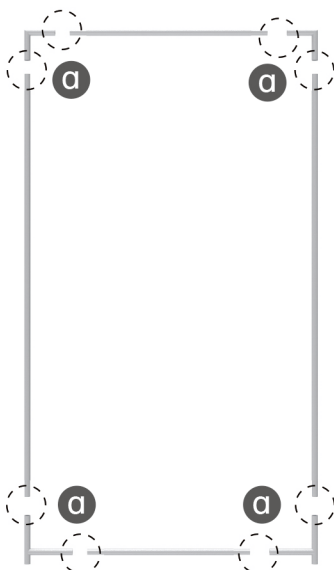
STEP 01

Connect to make long poles according to labelings.



STEP 02

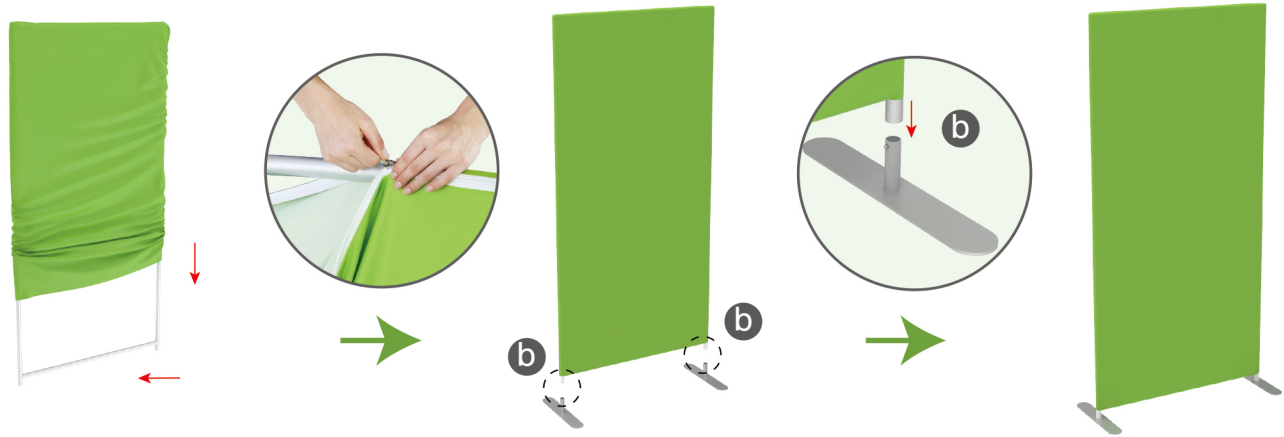
Connect long poles with corner poles according to labelings.



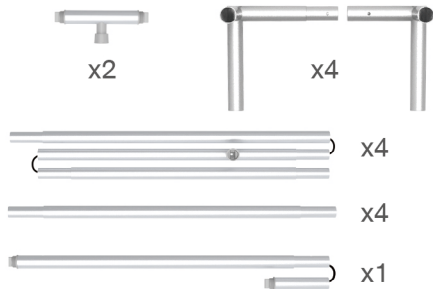
STEPS

STEP 03

Slide fabric banner on frame from top and zip up at bottom, insert them onto feet by pressing their knobs.



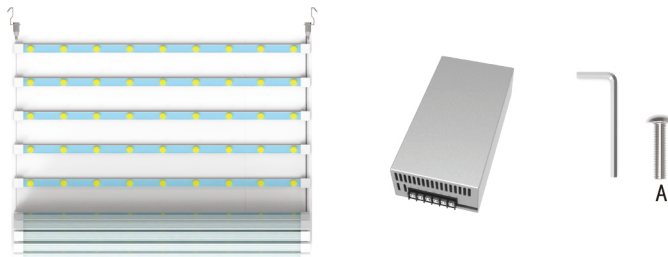
(1) Hardware



(2) Printed Graphic Fabric Banner (Optional)

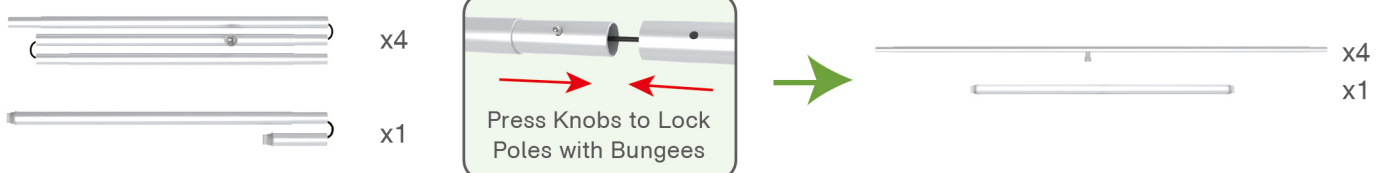


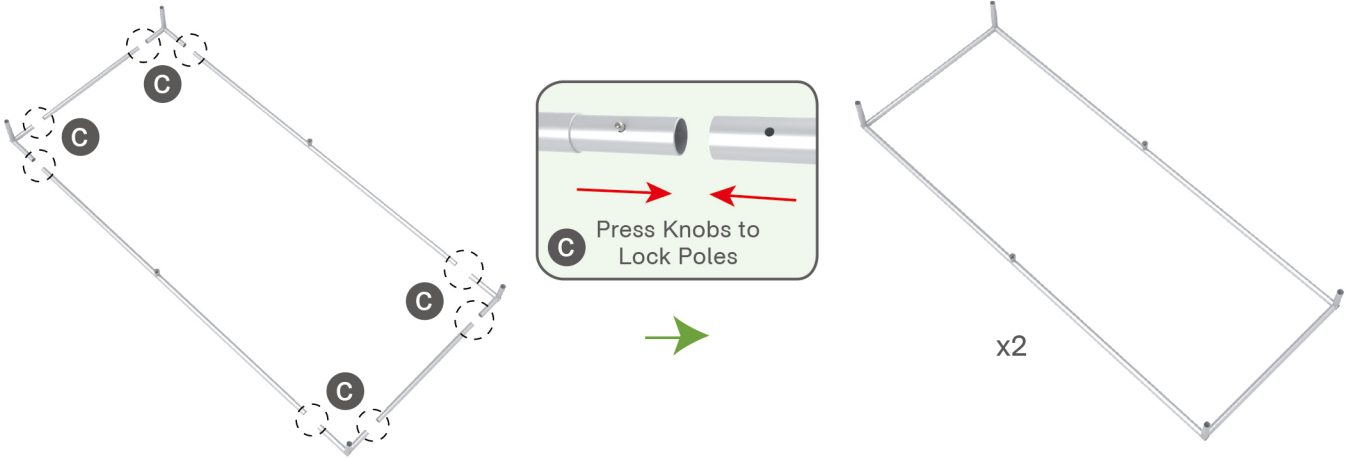
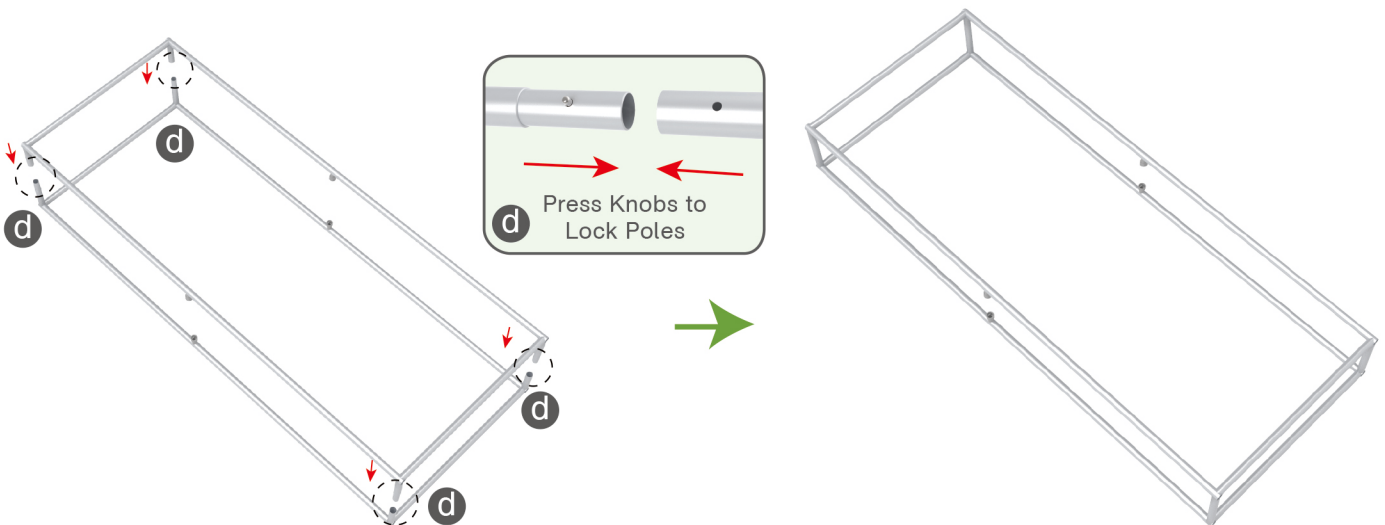
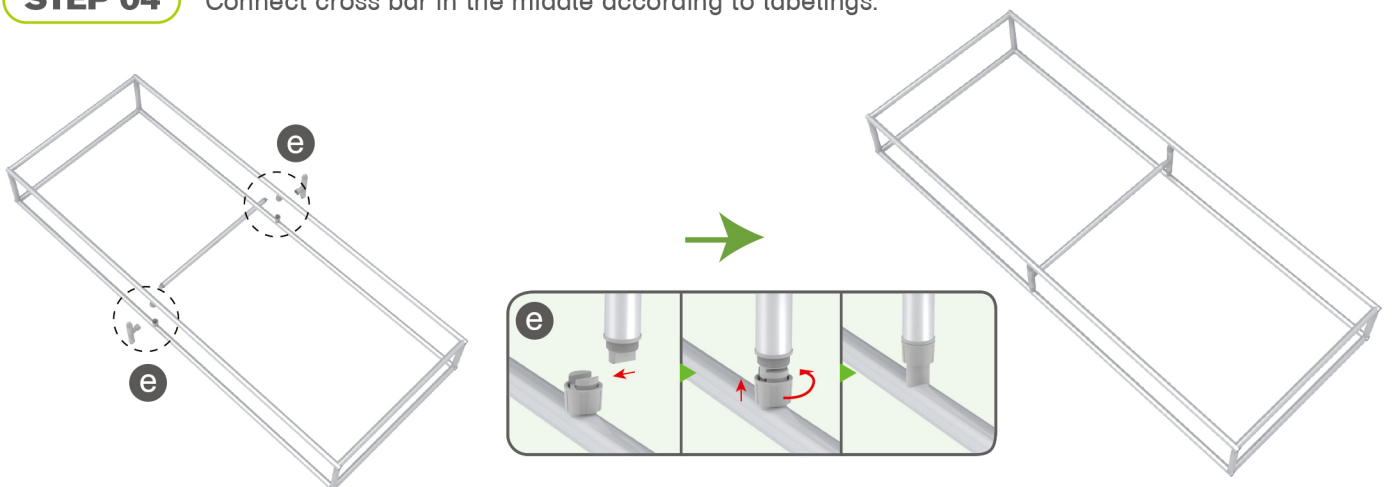
(3) LED Ladder Light & Switching Power Supply



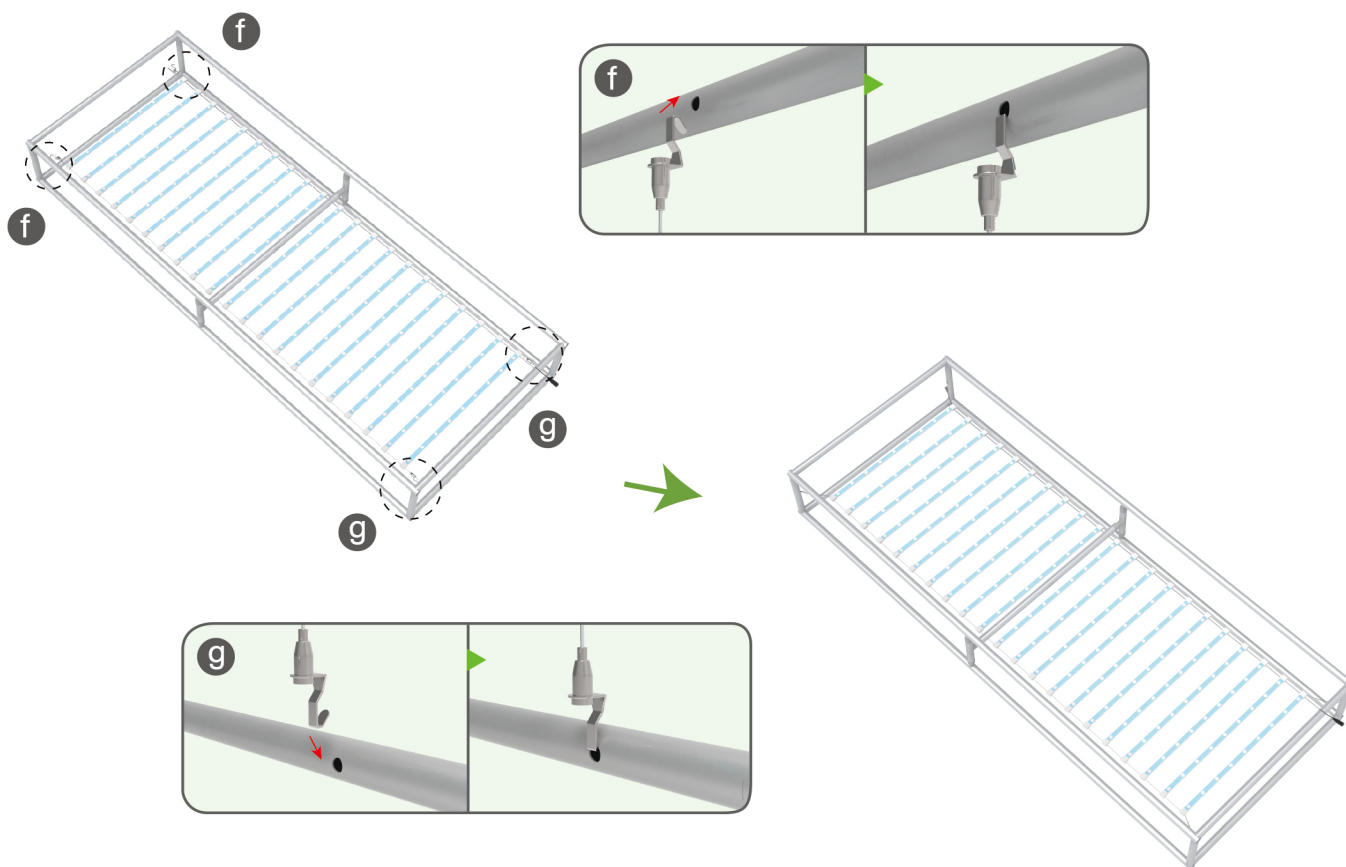
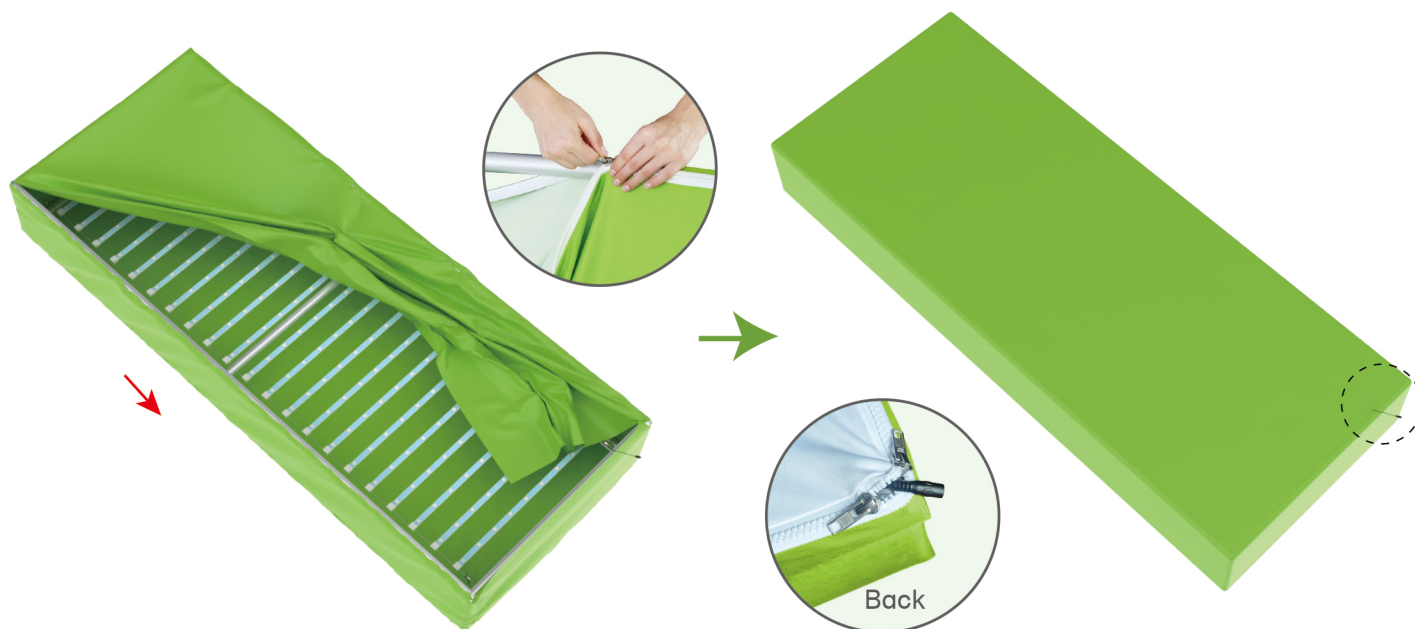
STEP 01

Connect to make long poles according to labelings.

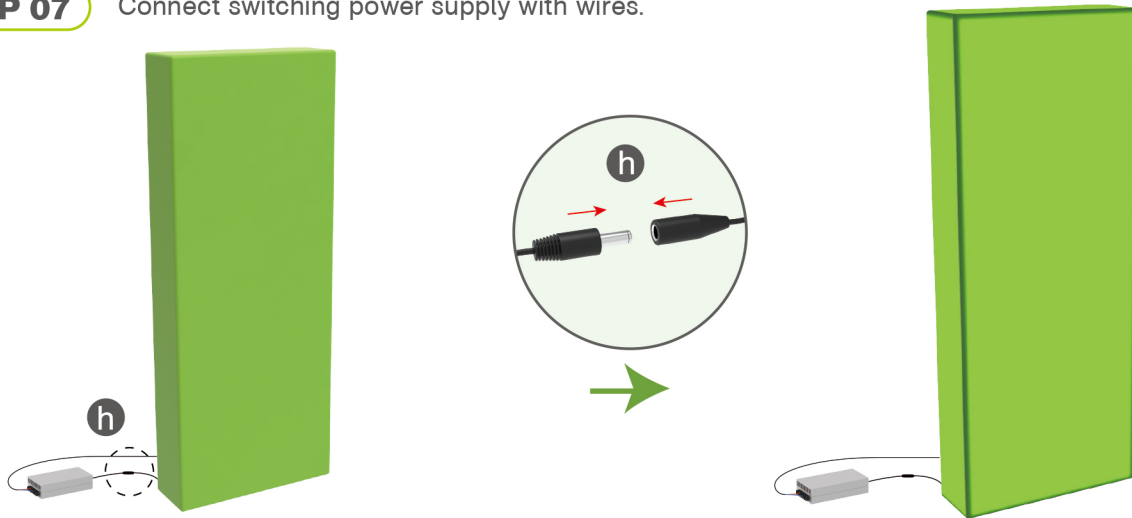


★ One Tool (Hex Wrench) **STEPS****STEP 02** Connect long poles with corner poles according to labelings.**STEP 03** Interconnect corner poles to make column frame according to labelings.**STEP 04** Connect cross bar in the middle according to labelings.

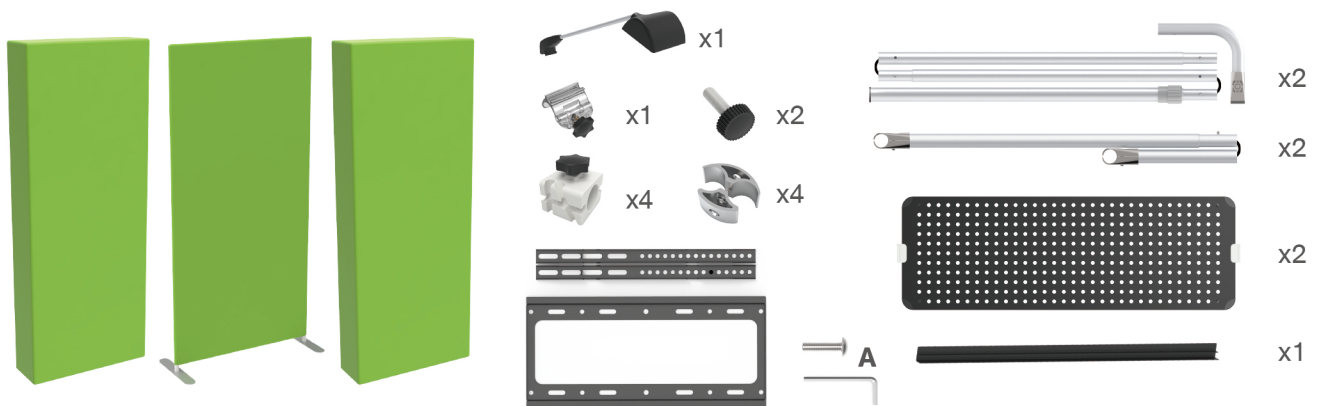
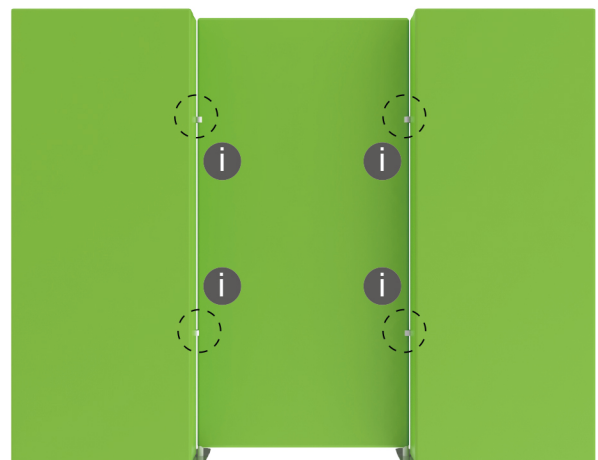
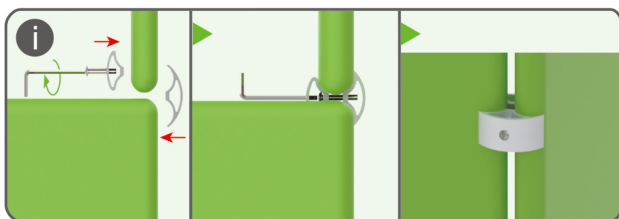
STEPS

STEP 05 Hang LED ladder light into poles' holes.**STEP 06** Wrap column frame with fabric banner & zip up at corner.

STEPS

STEP 07 Connect switching power supply with wires.

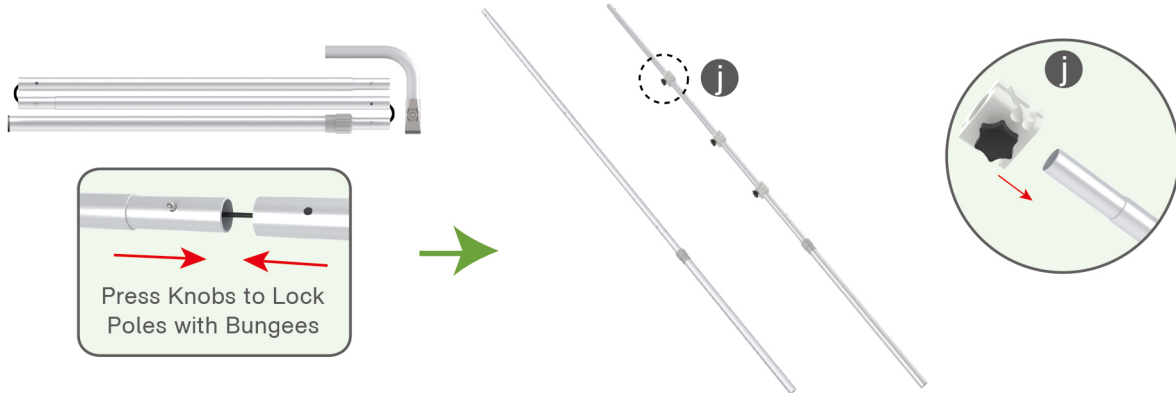
Booth Set Assembly

**STEP 01** Interconnect display stands with C-shaped clips.

STEPS

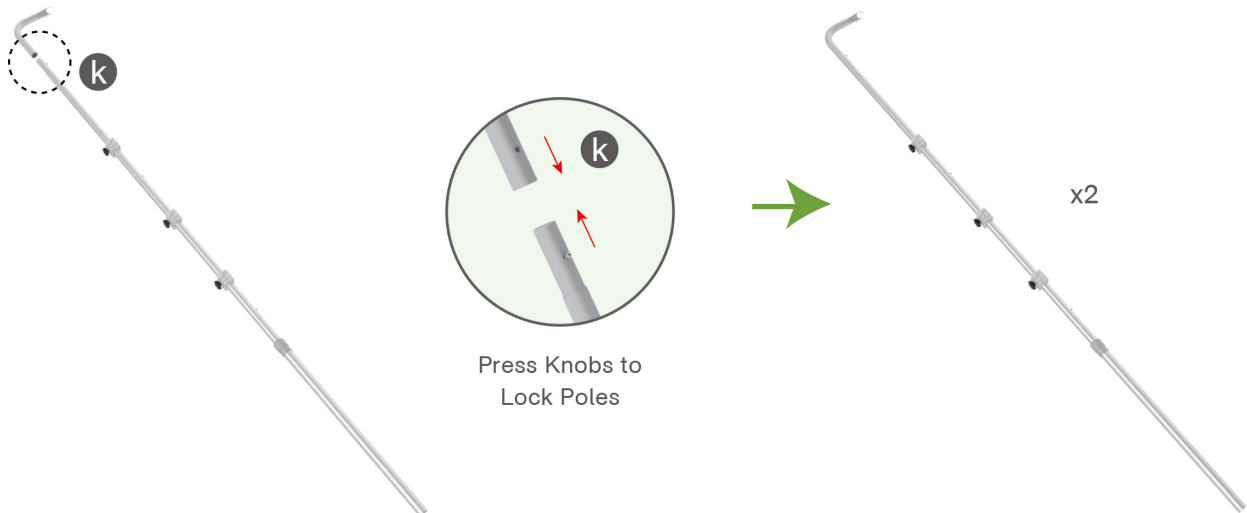
STEP 02

Connect to make long poles according to labelings.



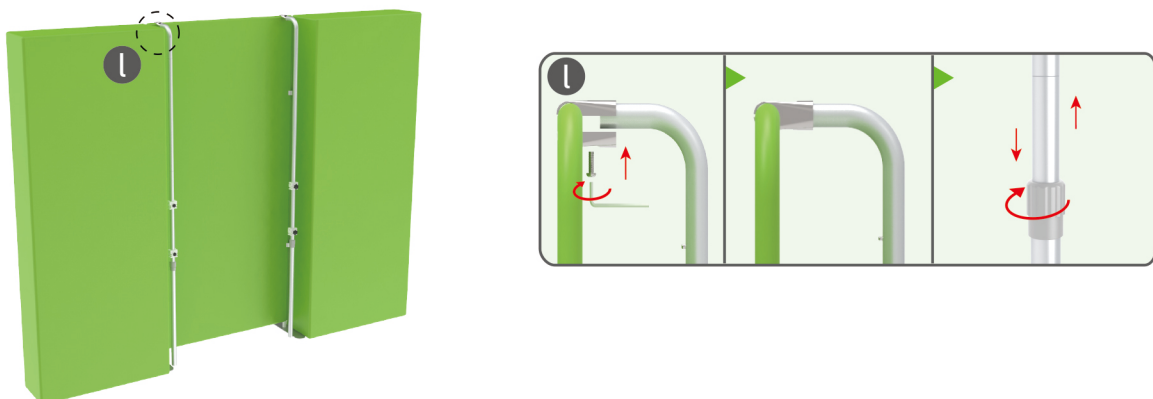
STEP 03

Slide three-way clips onto long poles, insert short curved poles onto their top by pressing their knobs.



STEP 04

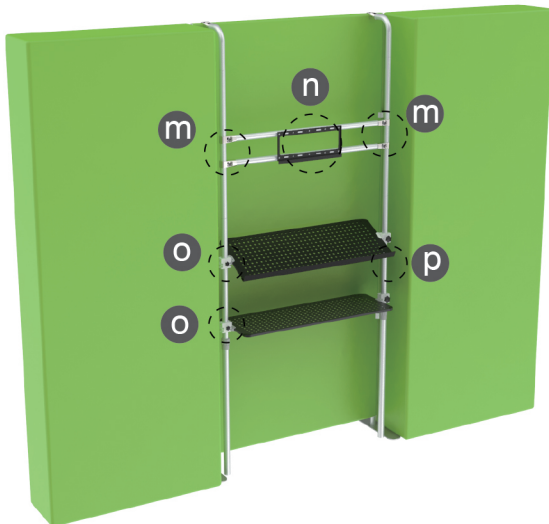
Connect long poles and display stand with clamps, adjust their height properly as needed by loosening and tightening screws.



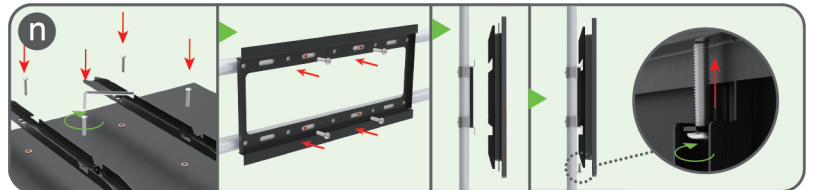
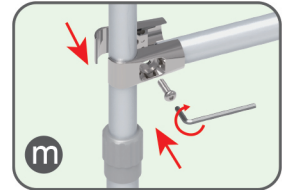
STEPS

STEP 05

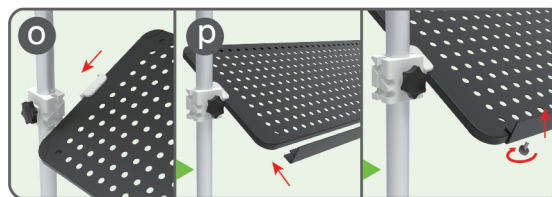
Hang TV & clip into hanging boards.



Connect cross bars and long poles with clamps.



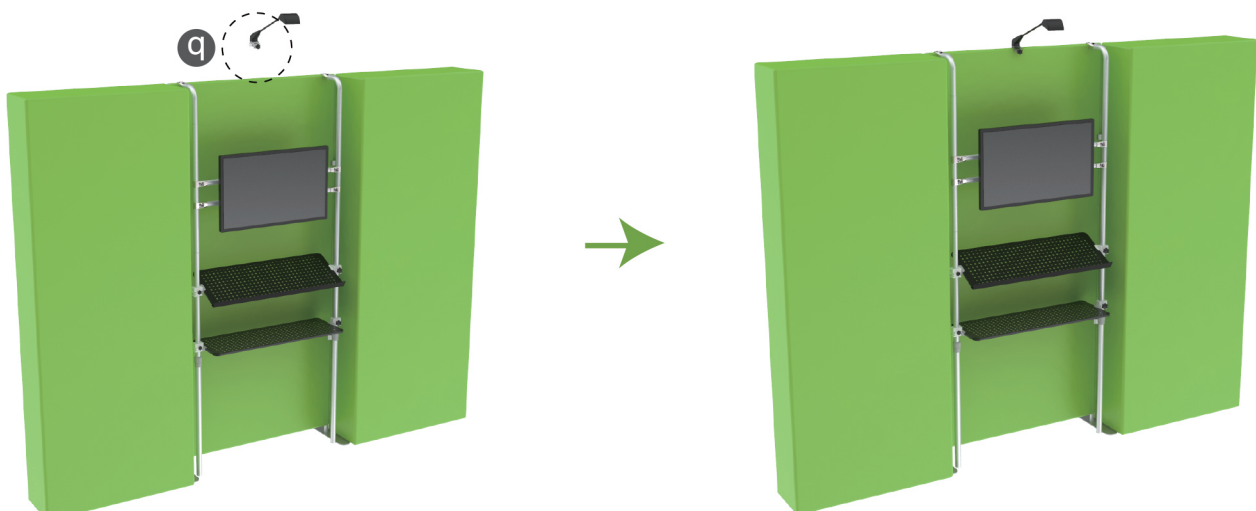
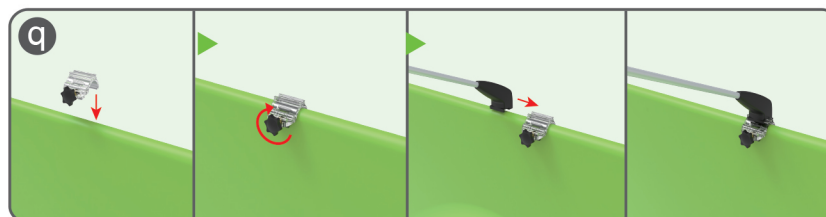
Screw TV mount onto cross bars & hang TV(Excluded, Demo Only).



Clip into hanging boards based on directions of three-way clips & tightening with thumb screws, clip F-shaped bar onto hanging board with thumb screws.

STEP 06

Screw light clips at top of display stands, slide lights onto them and adjust their direction.



STEPS**10X10FT-BOOTH-23**

STEPS

(1) Durable Plastic Hard Case, Aluminum Support Poles

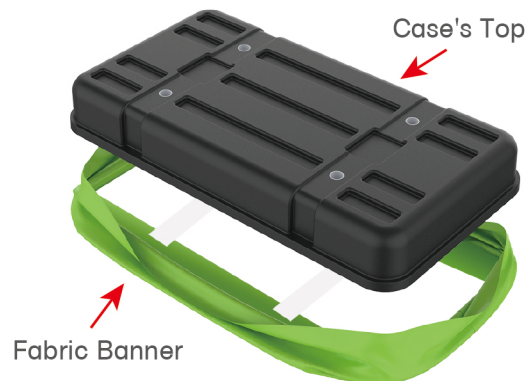


(2) Printed Graphic Fabric Banner



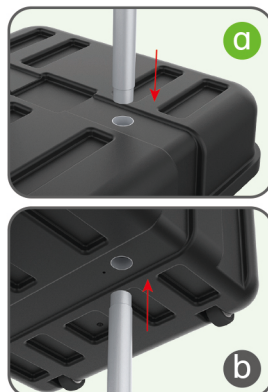
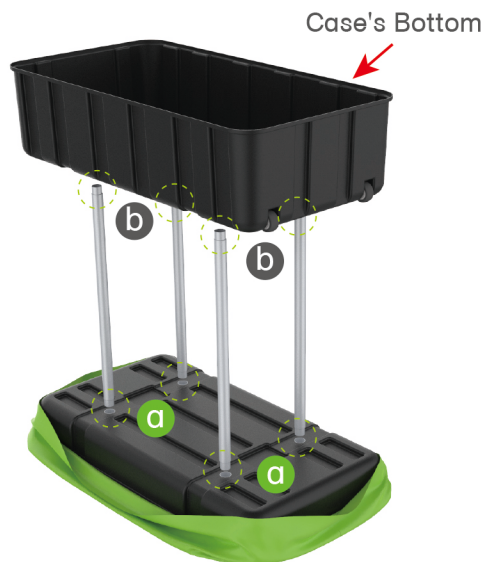
STEP 01

Put hard case's top into fabric banner.



STEP 02

Insert support poles into hard case's top & bottom.



STEPS

STEP 04

Wrap fabric banner from bottom to top & twist it to be smooth, lay hard case's intermediate panel on podium's top.

