

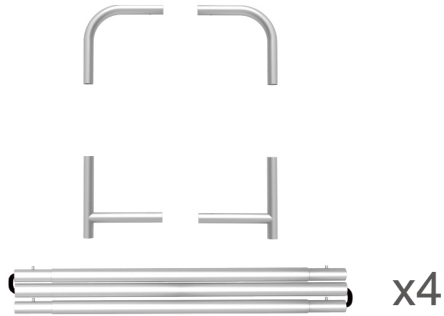
# INSTRUCTION



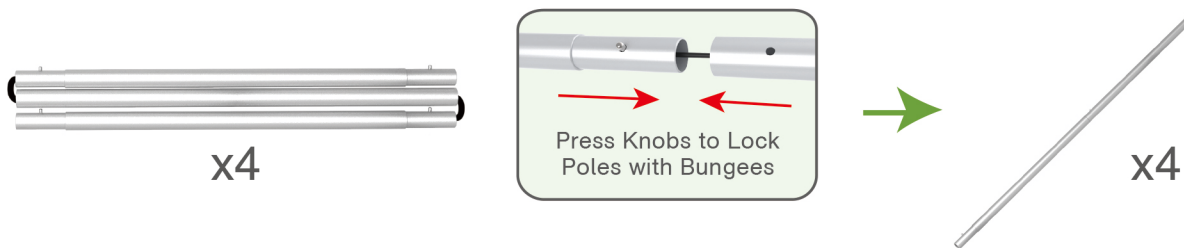
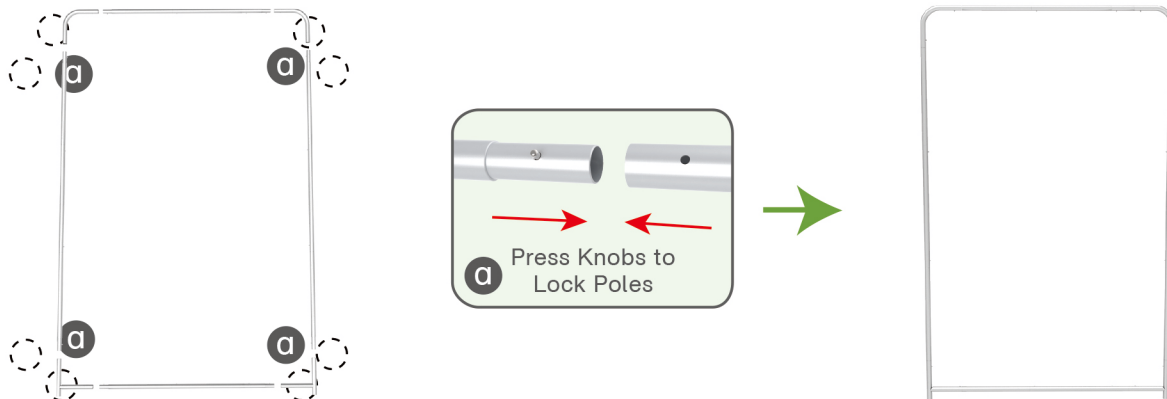
**10X10FT-BOOTH-22**

## STEPS

(1) Hardware



(2) Printed Graphic Fabric Banner (Optional)

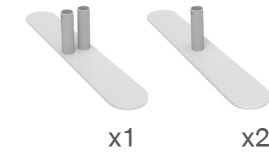
**STEP 01** Connect to make long poles according to labelings.**STEP 02** Connect long poles with corner poles according to labelings.**STEP 03** Slide fabric banner on frame from top and zip up at bottom.

## STEPS

## Booth Set Assembly



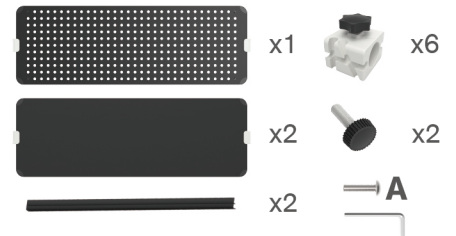
(1) Base



(3) LED Light &amp; Clip



(2) Shelving Board

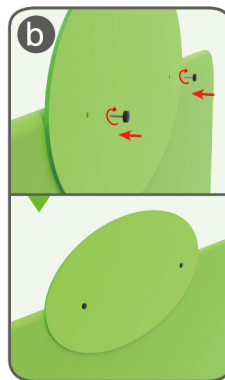
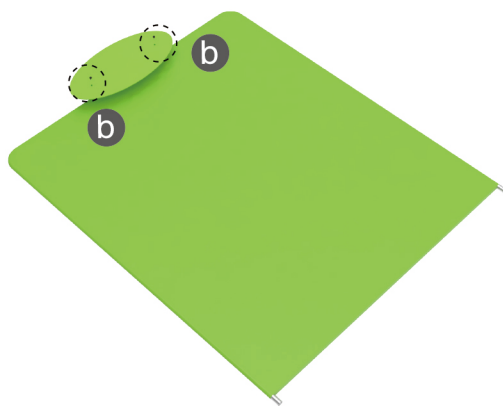


(4) 180° C-Shaped Clip



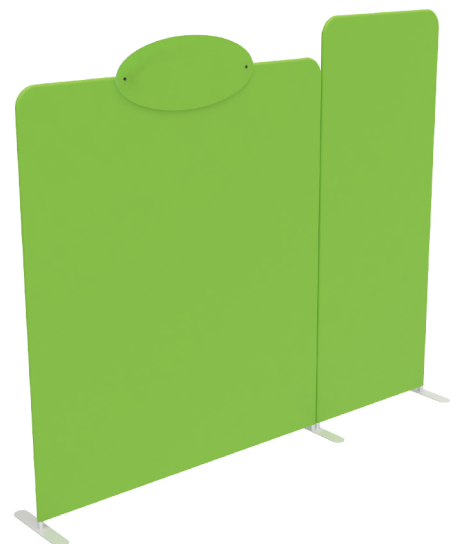
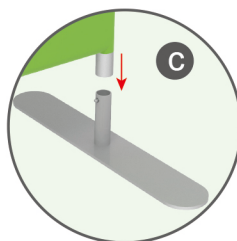
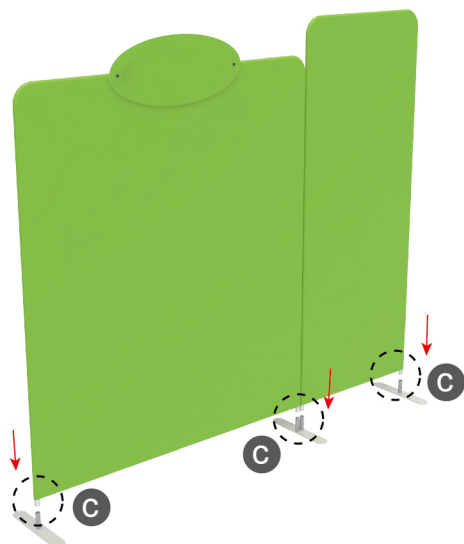
## STEP 01

Screw header onto display stand with thumb screws.



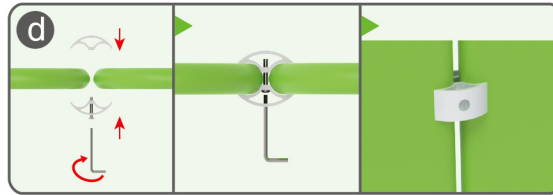
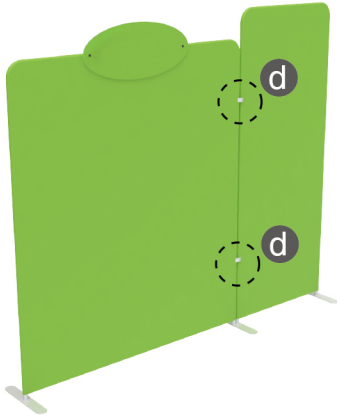
## STEP 02

Insert display stands onto feet by pressing their knobs.



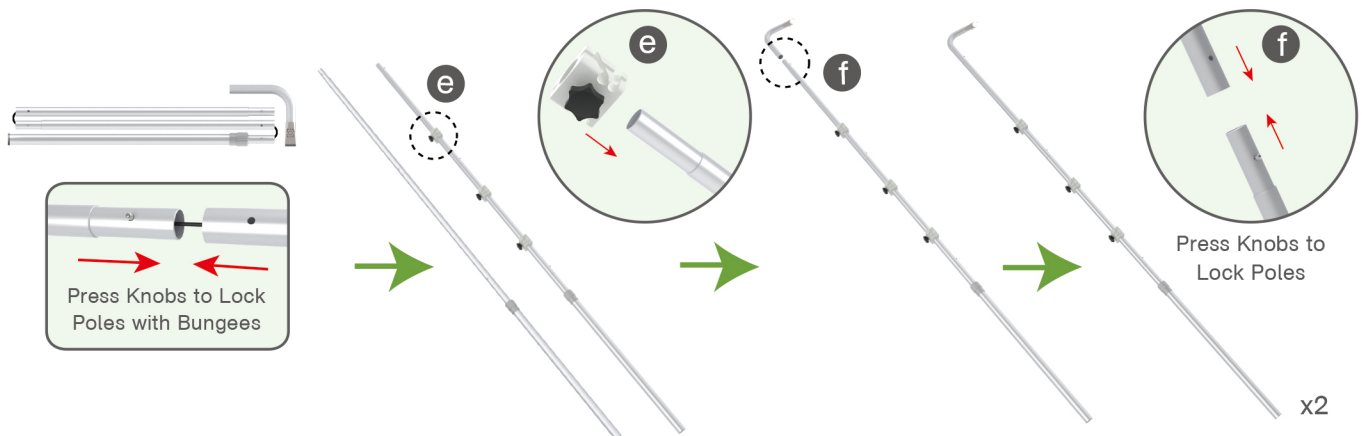
## STEPS

**STEP 03** Interconnect display stands with C-shaped clips.



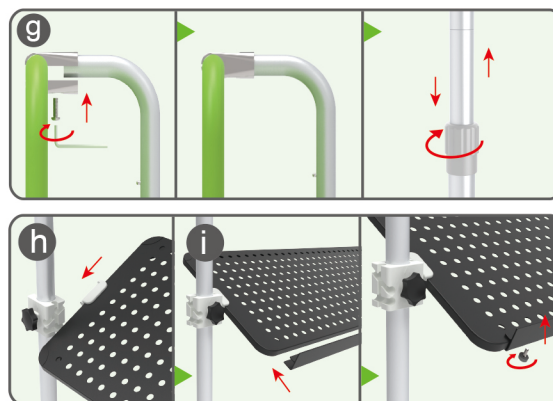
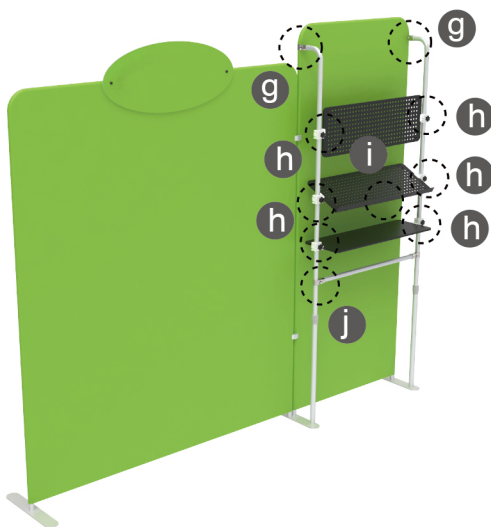
## STEP 05

Connect to make long poles according to labelings, slide three-way clips onto long poles, insert short curved poles onto their top by pressing their knobs.



## STEP 06

Connect long poles and display stand with clamps, adjust their height properly as needed by loosening and tightening screws.

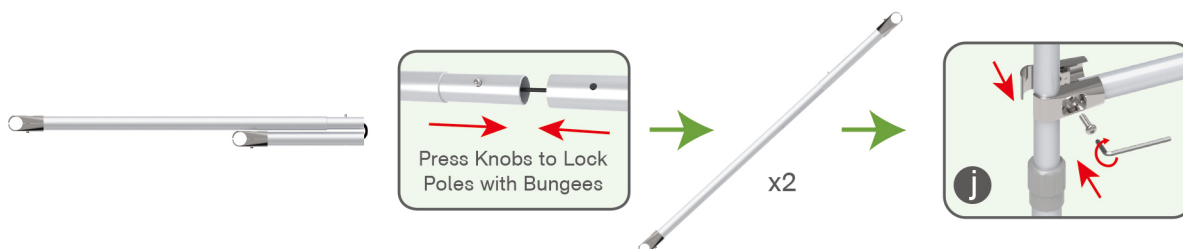


① Clip into hanging boards based on directions of three-way clips & tightening with thumb screws, clip F-shaped bar onto hanging board with thumb screws.

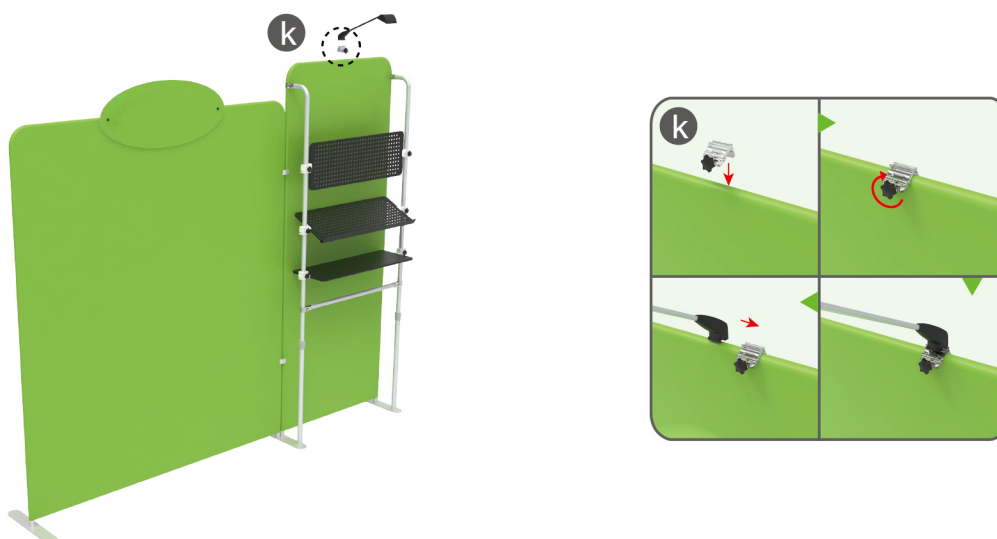


## STEPS

- ② Connect cross bars and long poles with clamps.



- STEP 07** Screw light clips at top of display stands, slide lights onto them and adjust their direction.



10X10FT-BOOTH-22

## STEPS

(1) Durable Plastic Hard Case, Aluminum Support Poles

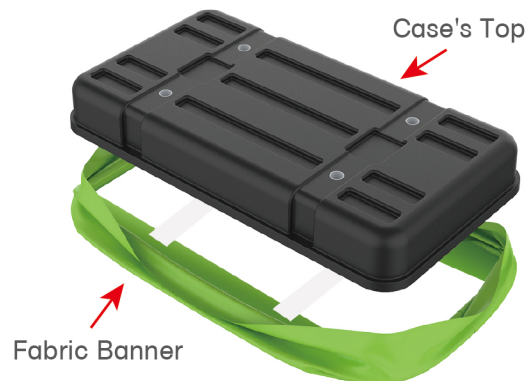


(2) Printed Graphic Fabric Banner



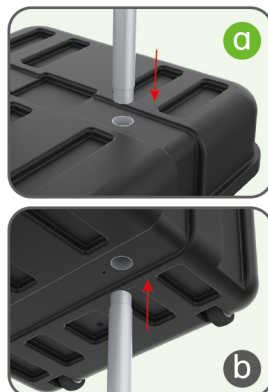
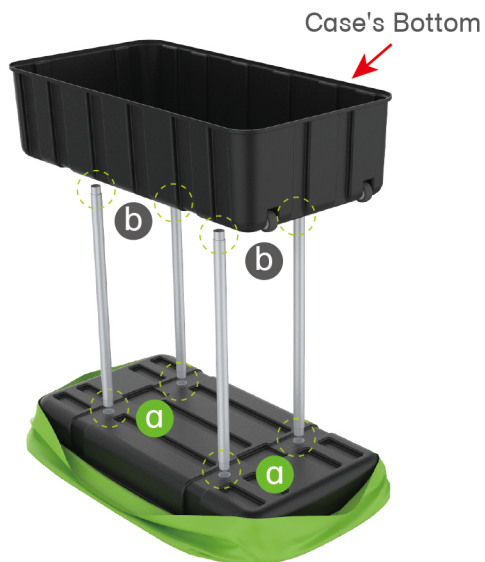
## STEP 01

Put hard case's top into fabric banner.



## STEP 02

Insert support poles into hard case's top &amp; bottom.



## STEPS

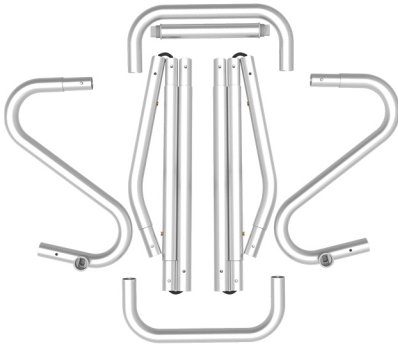
## STEP 04

Wrap fabric banner from bottom to top & twist it to be smooth, lay hard case's intermediate panel on podium's top.

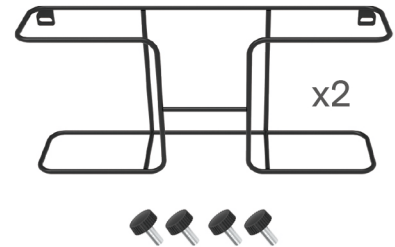


## STEPS

(1) Snap Tubes

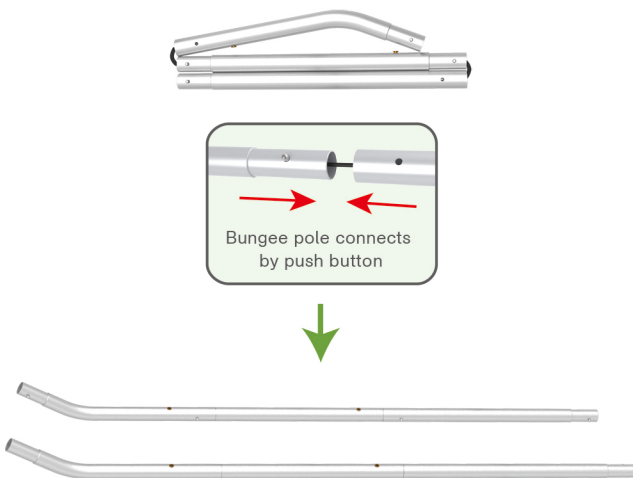


(2) Printed fabric banner

(3) Brochure rack x 2  
Screws x 4

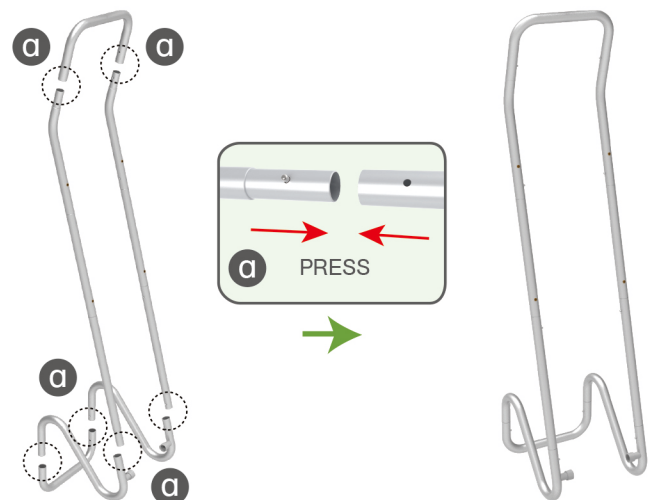
## STEP 01

To Connect the tubes according to the labellings

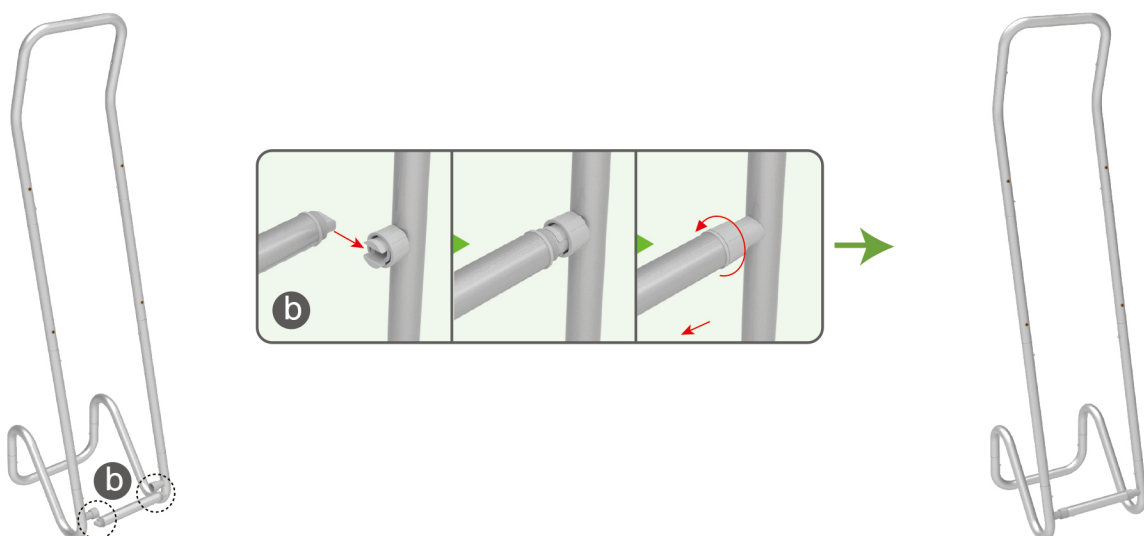


## STEP 02

To connect 2 long side tubes by the corner pieces



## STEP 03 To install the cross bar according to labellings

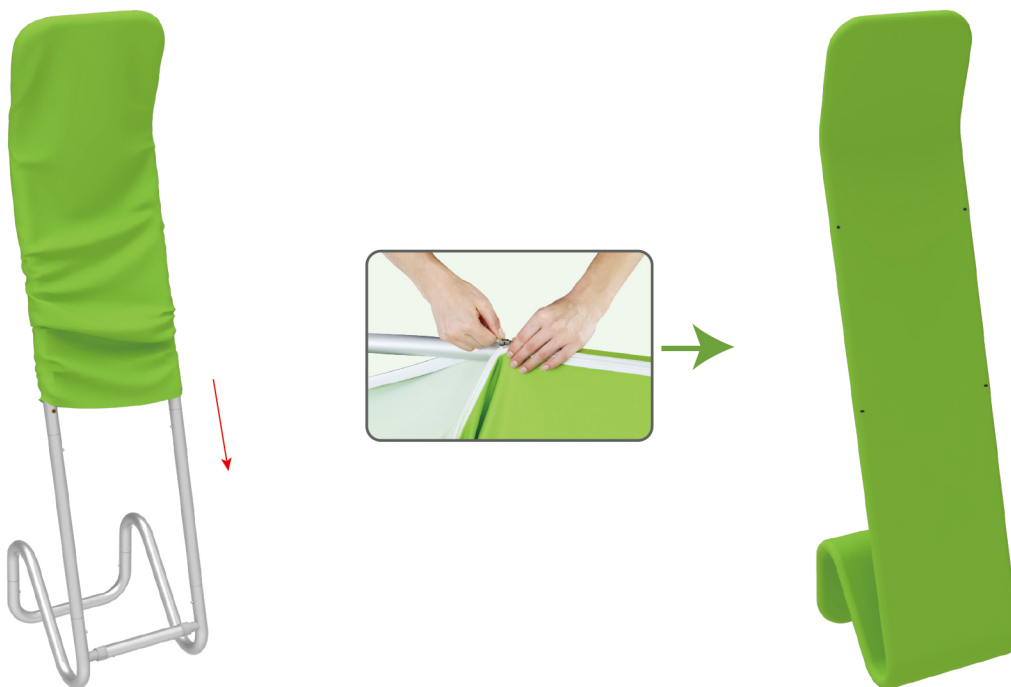




## STEPS

## STEP 04

To Wrap up the fabric banner from top to bottom and zip up.



## STEP 05

To install 2 racks by screws in position

