

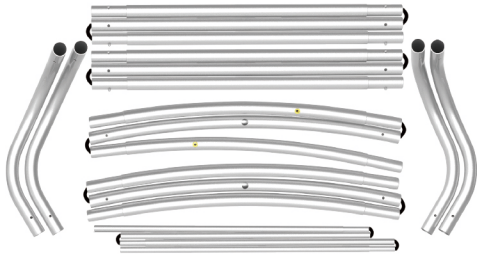
# INSTRUCTION



**10X10FT-BOOTH-19**

## STEPS

(1) Hardware

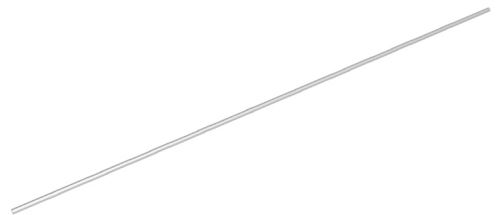
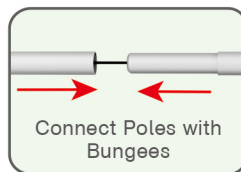
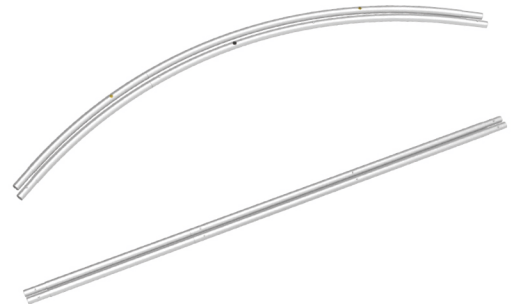
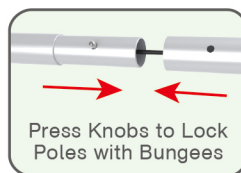
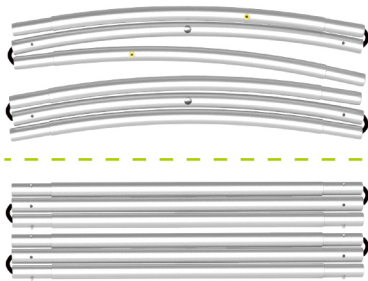


(2) Printed Graphic Fabric Banner (Optional)



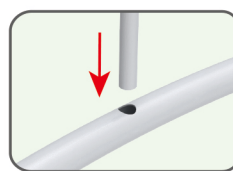
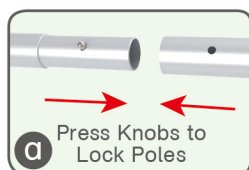
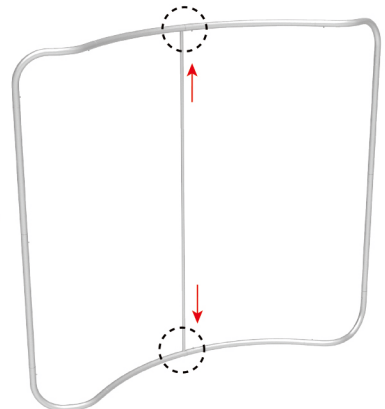
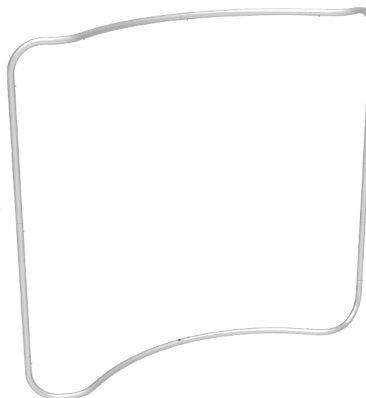
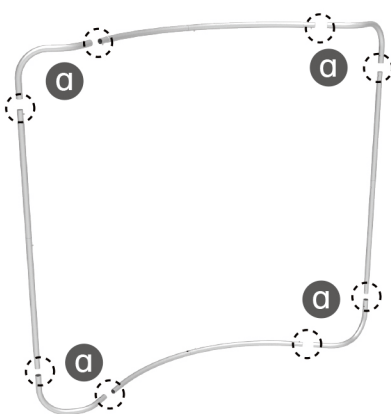
## STEP 01

Connect to make long poles according to labelings.



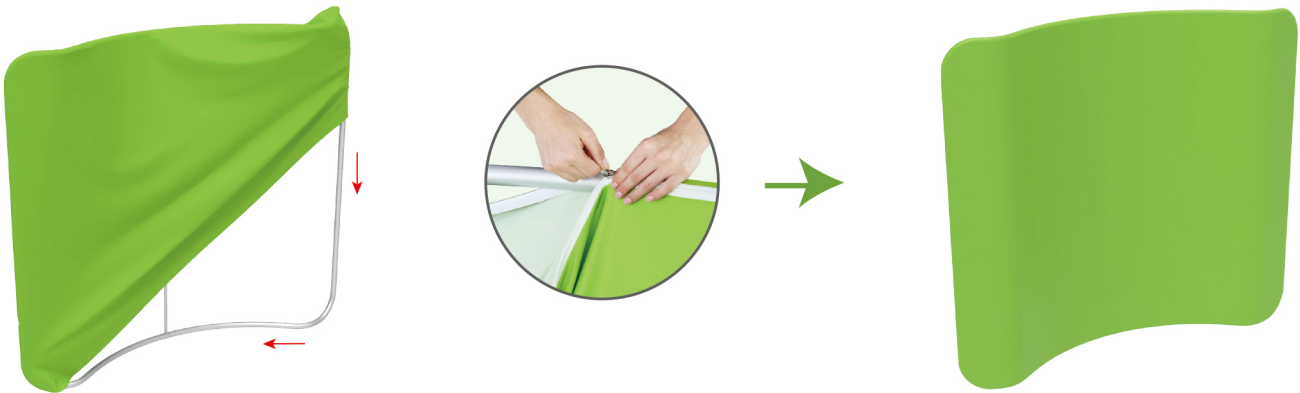
## STEP 02

Connect long poles with corner poles according to labelings.



## STEPS

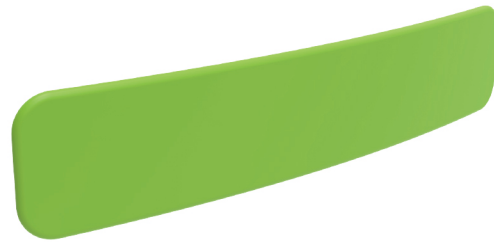
**STEP 03** Slide fabric banner on frame from top and zip up at bottom.



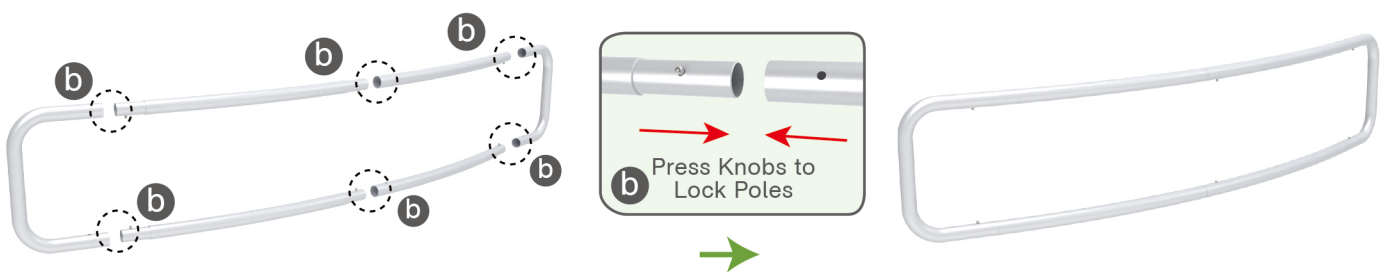
(1) Hardware



(2) Printed Graphic Fabric Banner (Optional)



**STEP 01** Connect poles according to labelings.



**STEP 02** Slide fabric banner on frame from left and zip up at right.



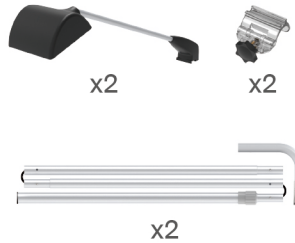
★ One Tool (Hex Wrench)

## STEPS

## Booth Set Assembly



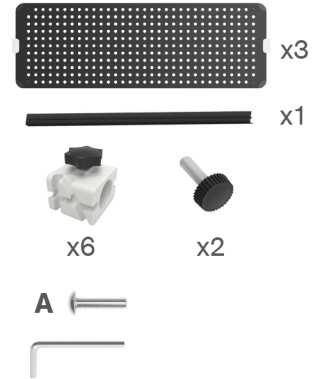
(1) LED Light &amp; Clip



(3) Support Pole

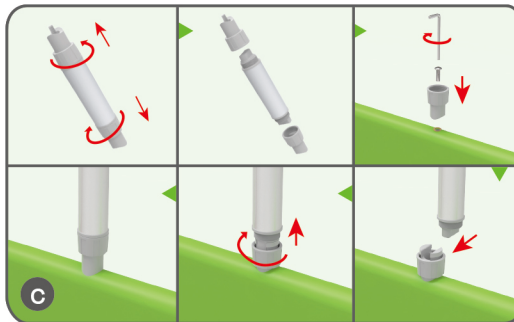
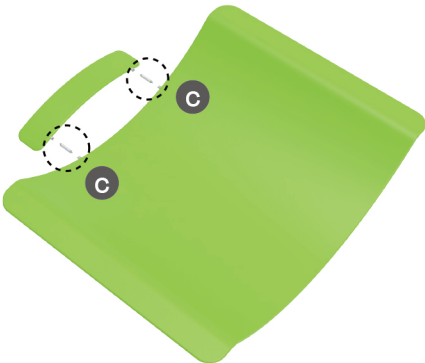


(2) Shelving Board



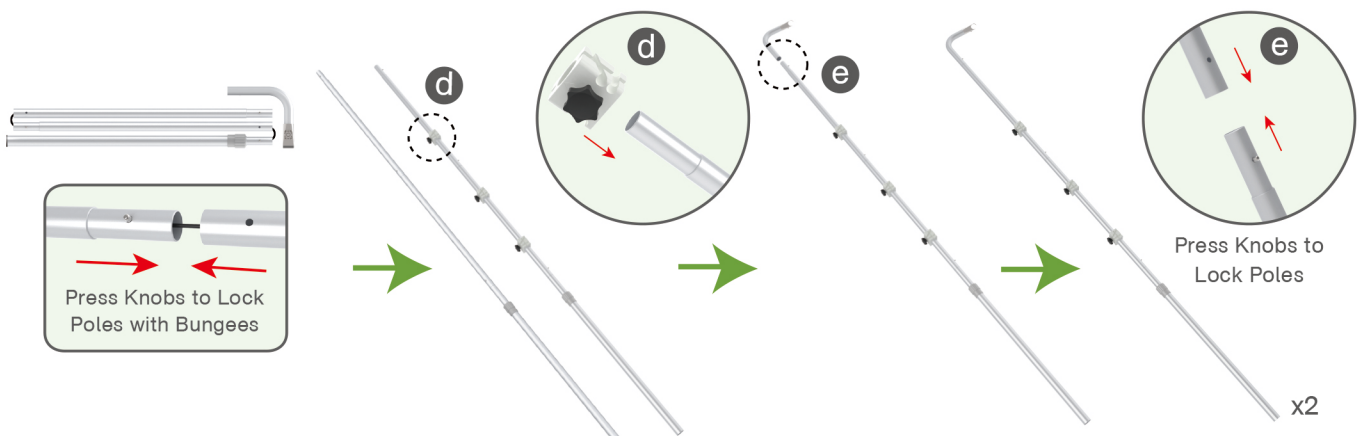
## STEP 01

Connect support poles onto display stand and header.



## STEP 02

Connect to make long poles according to labelings, slide three-way clips onto long poles, insert short curved poles onto their top by pressing their knobs.

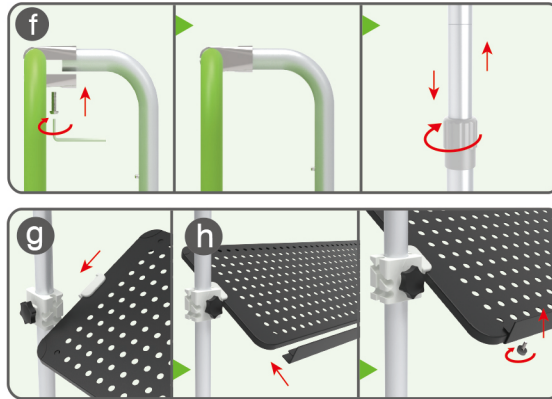
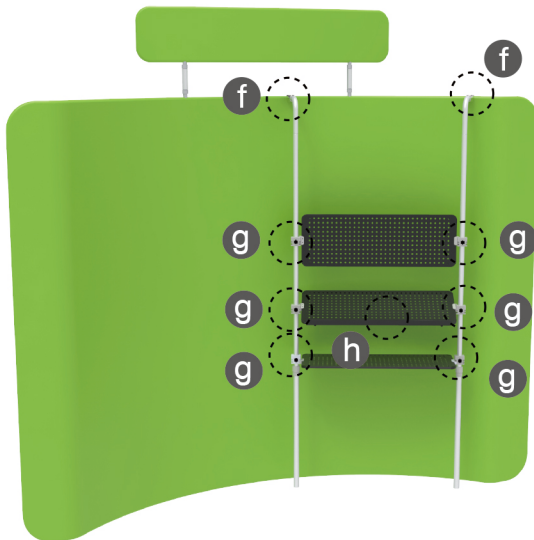




## STEPS

## STEP 03

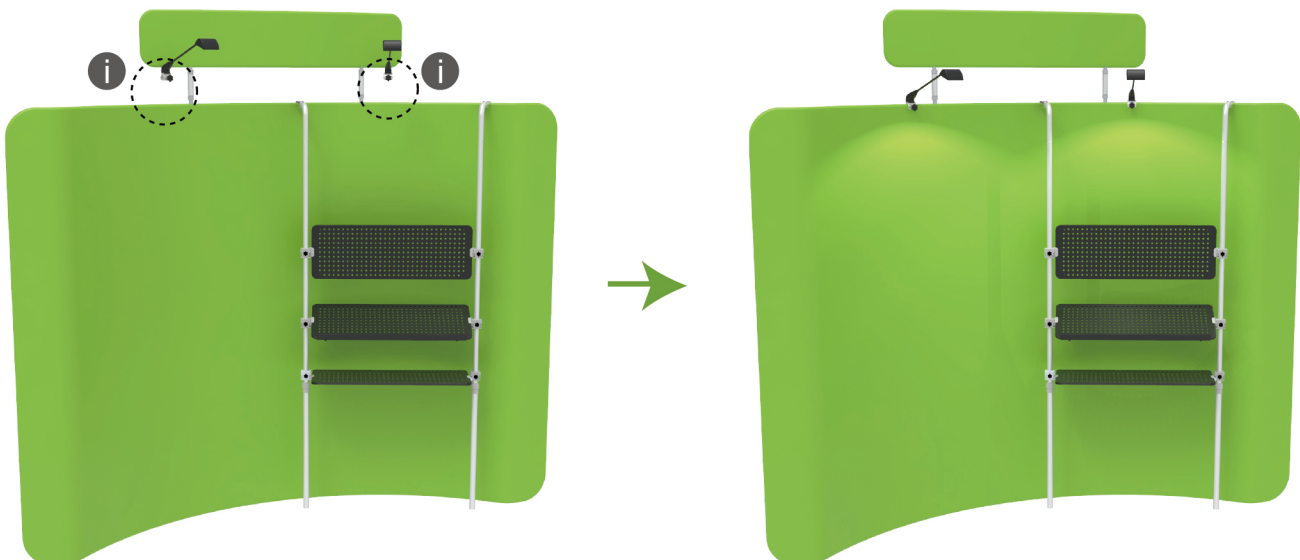
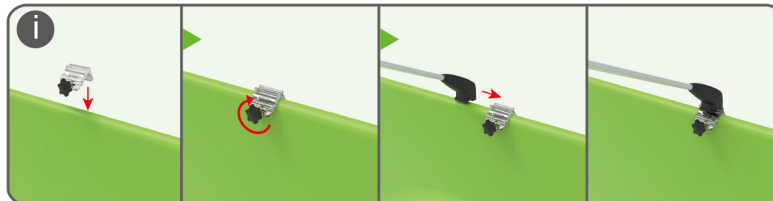
Connect long poles and display stand with clamps, adjust their height properly as needed by loosening and tightening screws.



Clip into hanging boards based on directions of three-way clips & tightening with thumb screws, clip F-shaped bar onto hanging board with thumb screws.

## STEP 04

Screw light clips at top of display stands, slide lights onto them and adjust their direction.



10X10FT-BOOTH-19

## STEPS

(1) Durable Plastic Hard Case, Aluminum Support Poles



(2) Printed Graphic Fabric Banner



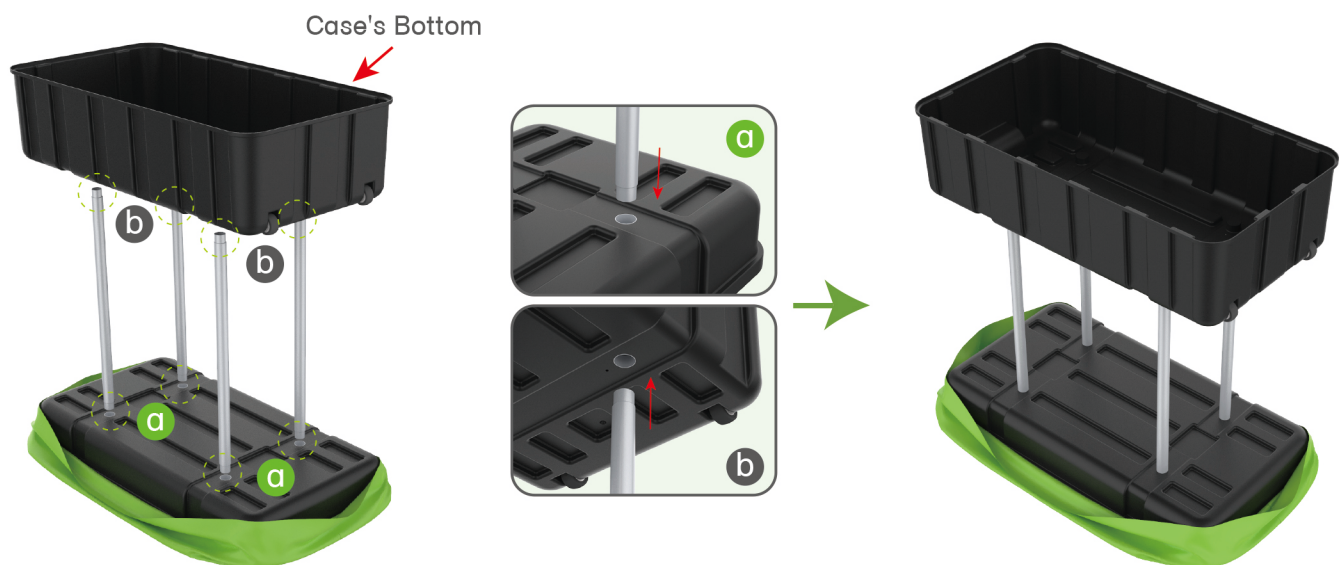
## STEP 01

Put hard case's top into fabric banner.



## STEP 02

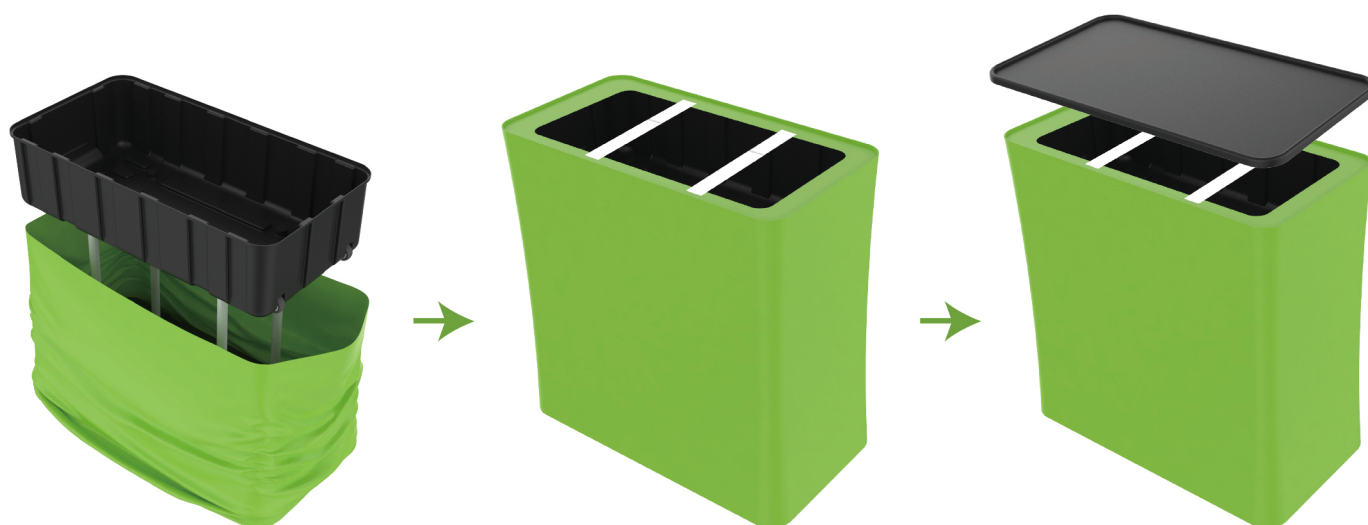
Insert support poles into hard case's top &amp; bottom.



## STEPS

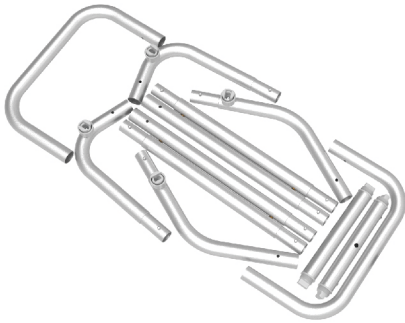
## STEP 04

Wrap fabric banner from bottom to top & twist it to be smooth, lay hard case's intermediate panel on podium's top.

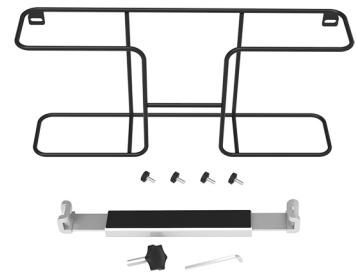


★ One Tool (Hex Wrench) **STEPS**

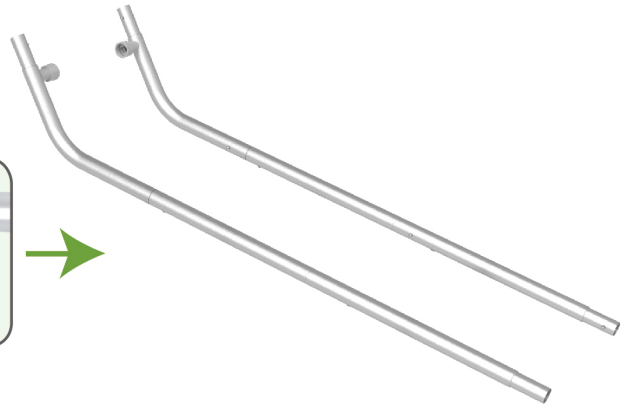
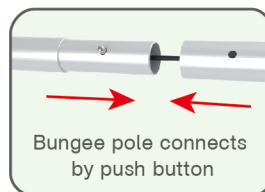
(1) Snap Tubes



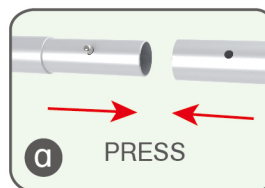
(2) Printed fabric banner

(3) Brochure rack x 2 / Screws x 4  
Tablet PC holder x1**STEP 01**

To Connect the tubes according to the labellings

**STEP 02**

To connect 2 long side tubes by the corner pieces

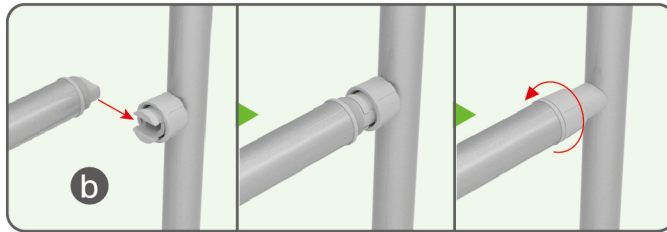




## STEPS

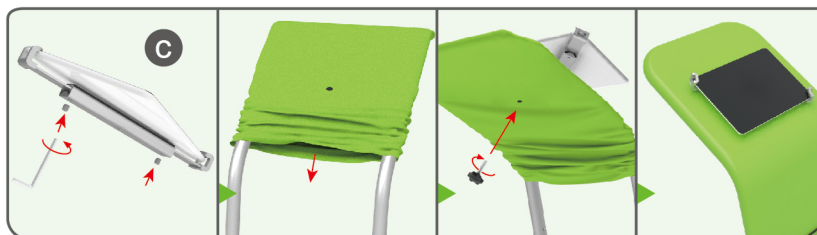
## STEP 03

To install the cross bar according to labellings



## STEP 04

To wrap the fabric from top to the middle of frame, then put the iPad in the holder and adjust the holder to right size and lock it by Allen Key Afterwards, install the set to the display stand.





## STEPS

## STEP 05

To pull the fabric banner to bottom and zip up.



## STEP 06

To Install 2 racks by screws in position

