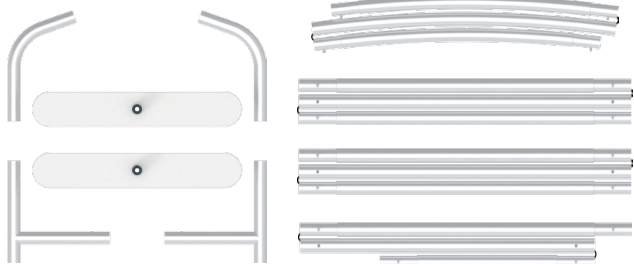


PARTS

PART FOR HANGING BANNER

(1) support spares



(2) x1 fabric graphic for hanging banner.

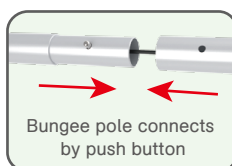


(3) LED Light X1
Light Clips X1



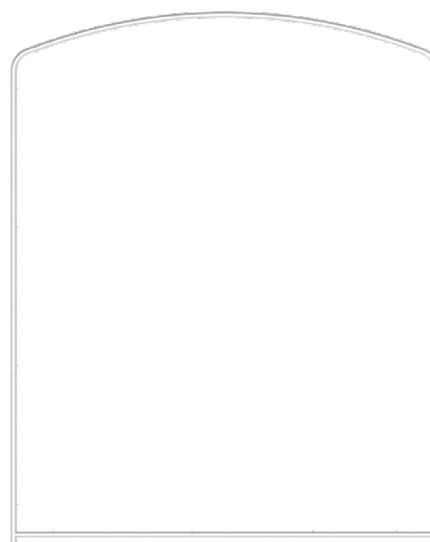
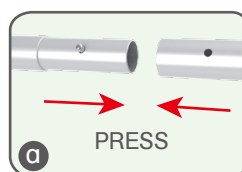
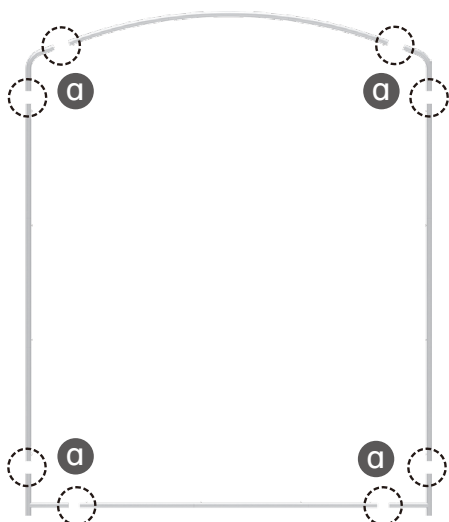
STEP 01

Assemble straight poles.
To set up the frame according to the labellings.



STEP 02

Connect the support poles .

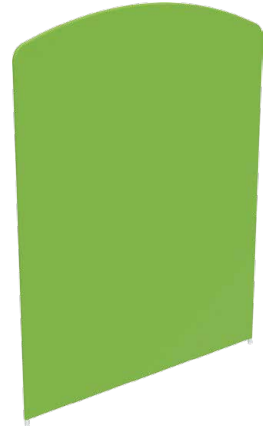


PARTS

PART FOR HANGING BANNER

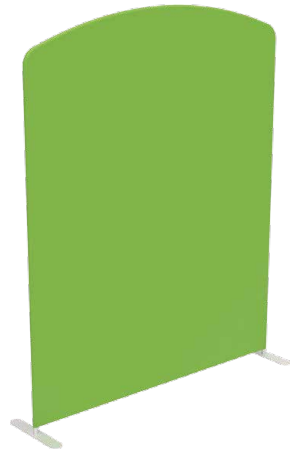
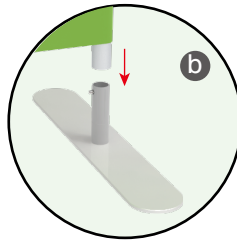
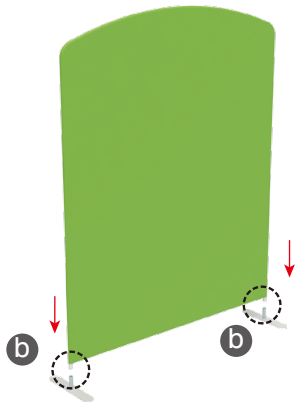
STEP 03

Wrap up the frame with graphic from bottom base, then zip up.



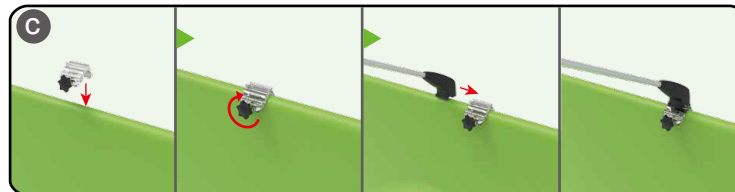
STEP 04

Connect the bottom Feet



STEP 05

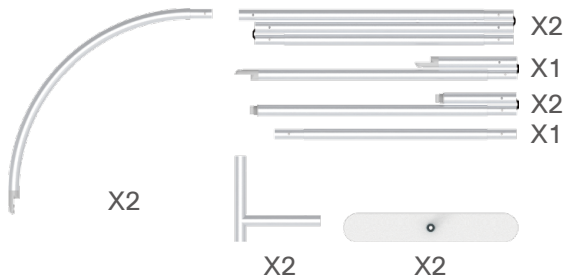
Install LED light



PARTS

PART FOR HANGING BANNER

(1) support spars



(2) x1 fabric graphic for hanging banner.

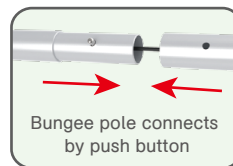


(3) LED Light X1
Light Clips X1



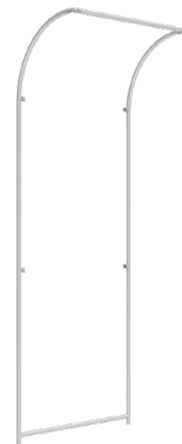
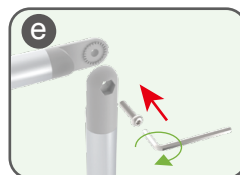
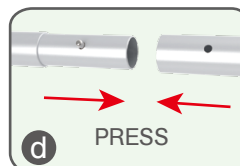
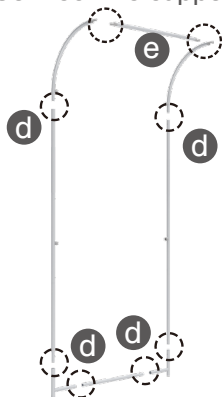
STEP 01

Assemble straight poles.
To set up the frame according to the labellings.



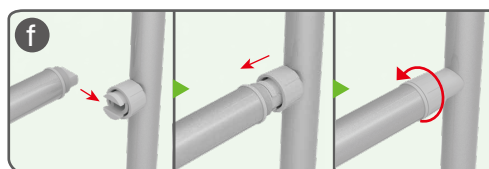
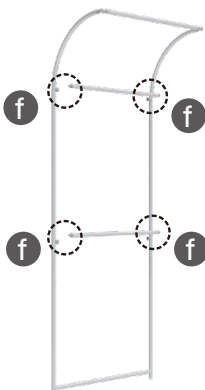
STEP 02

Connect the support poles .



STEP 03

Connect the support poles .



PARTS

PART FOR HANGING BANNER

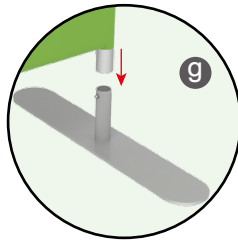
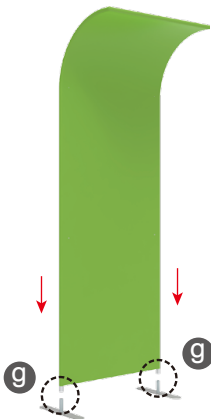
STEP 04

Wrap up the frame with graphic from bottom base, then zip up.



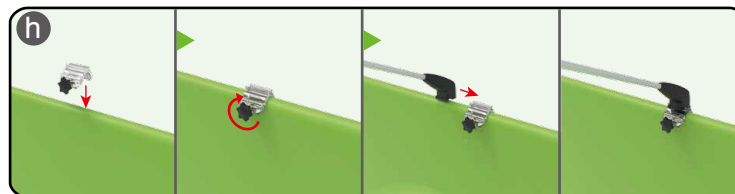
STEP 05

Connect the bottom Feet



STEP 06

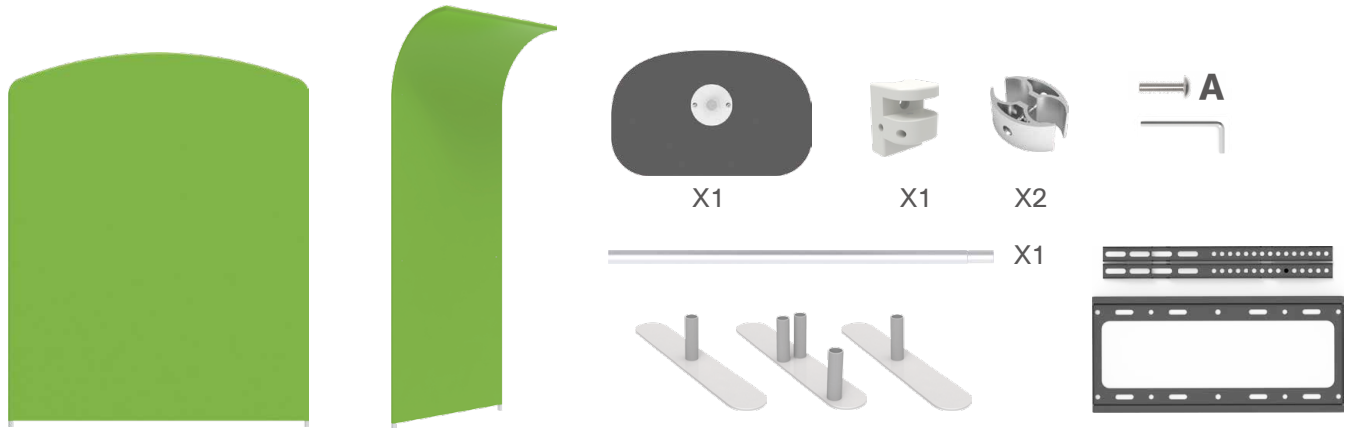
Install LED light



PARTS

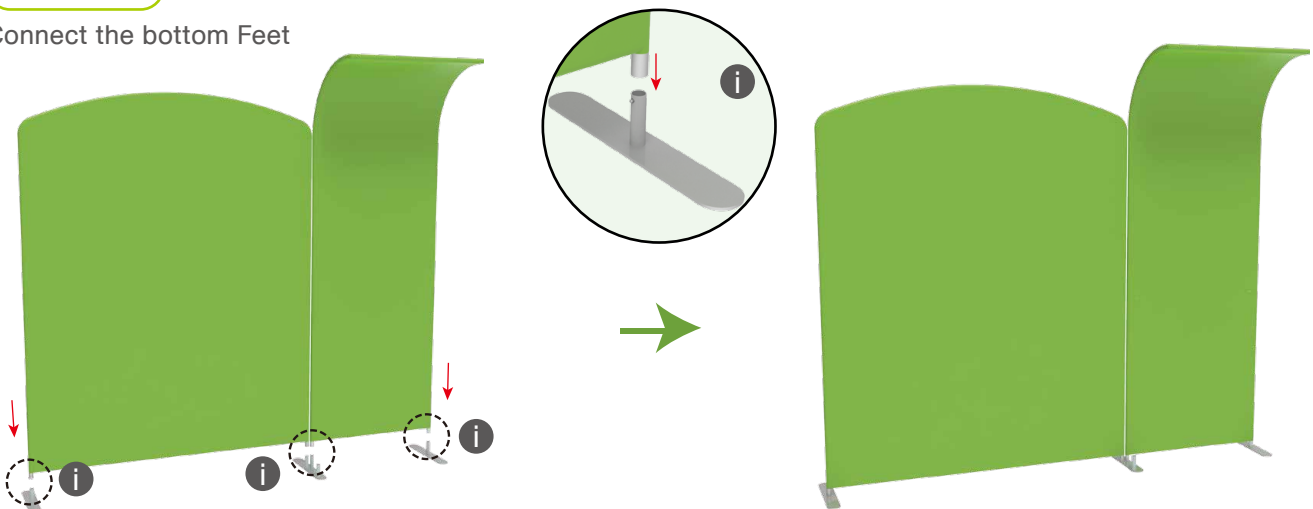
BRACKET ASSEMBLY

(1) Collocation



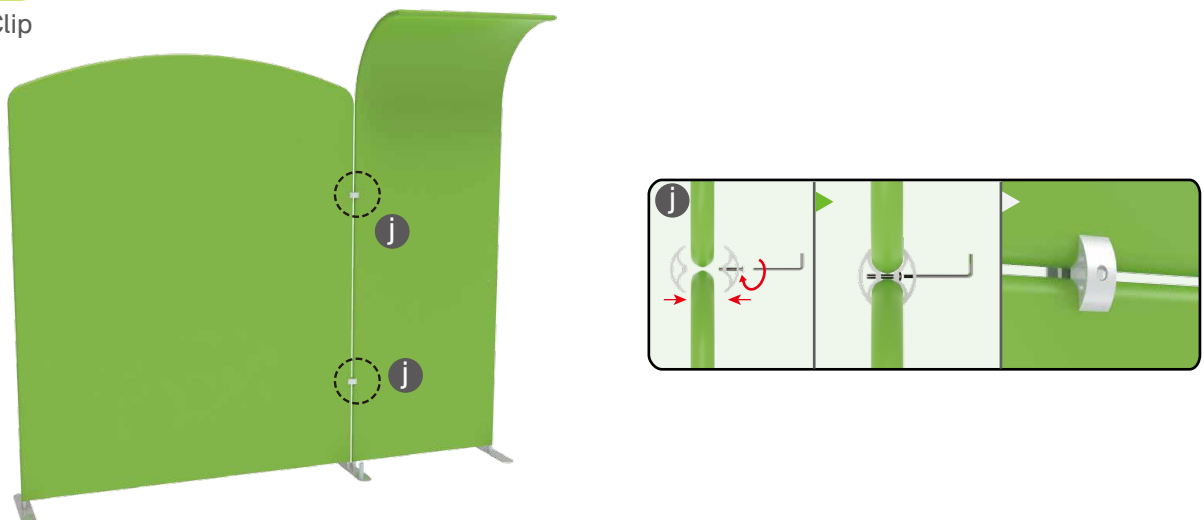
STEP 01

Connect the bottom Feet



STEP 02

Install C Clip

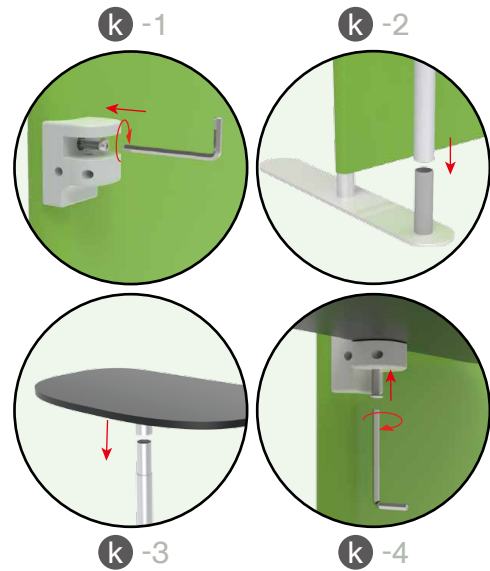
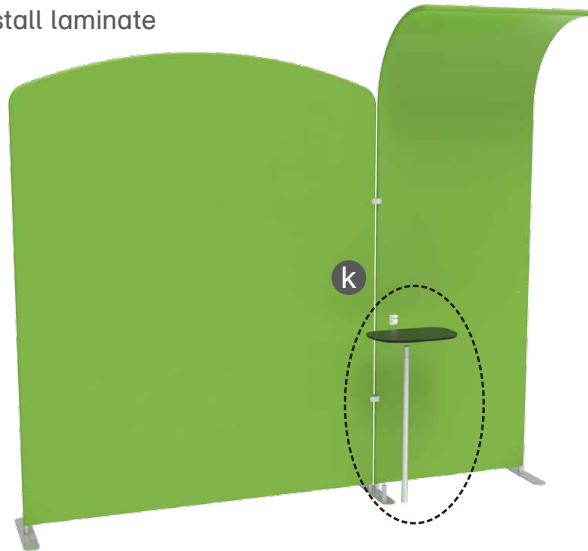


PARTS

BRACKET ASSEMBLY

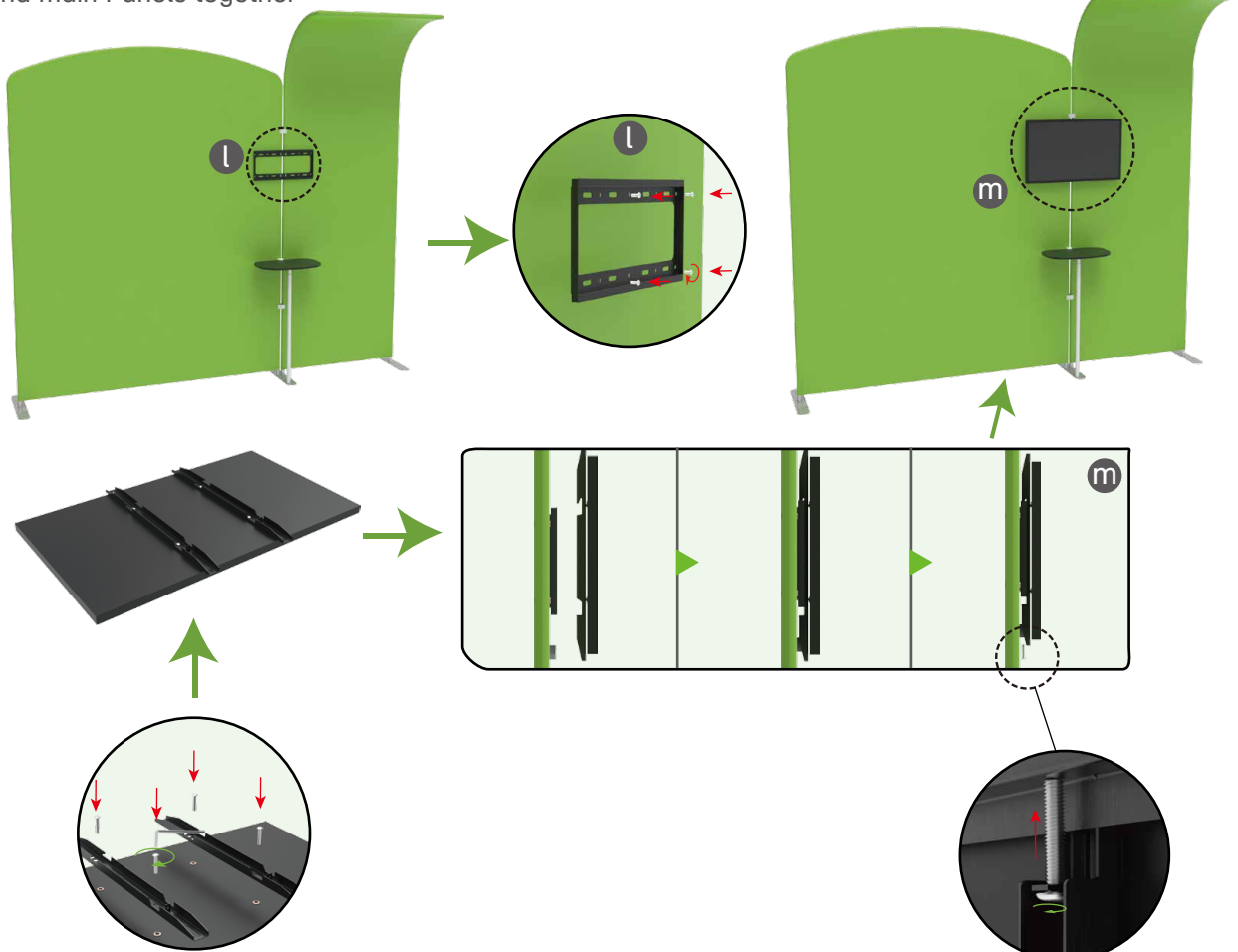
STEP 03

Install laminate



STEP 04

Installing TV
TV and main Panels together

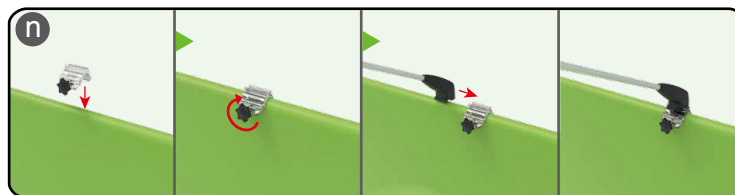
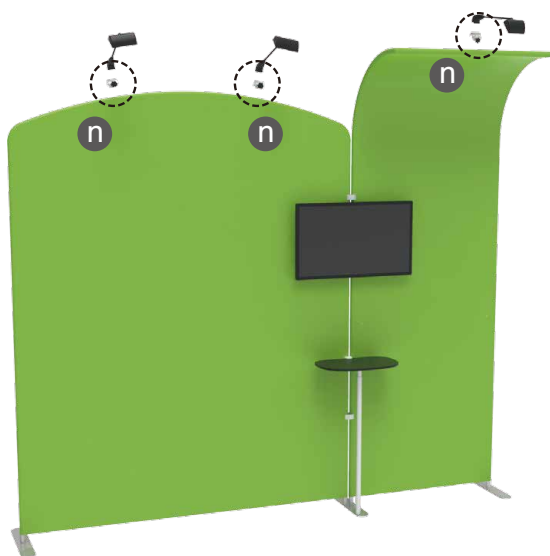


PARTS

BRACKET ASSEMBLY

STEP 05

Install LED light



10x10FT-BOOTH-15



10x10FT-BOOTH-17