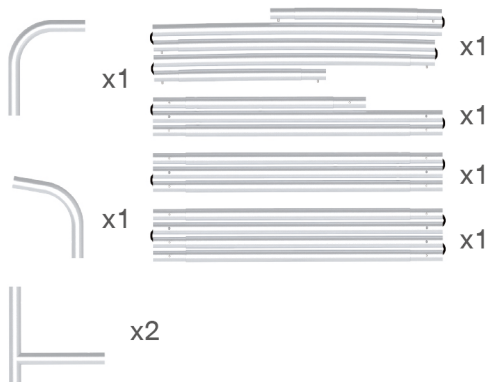


## STEPS

## (1) Hardware

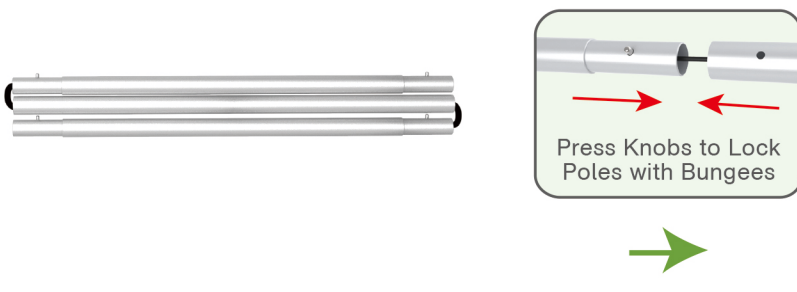


## (2) Printed Graphic Fabric Banner (Optional)



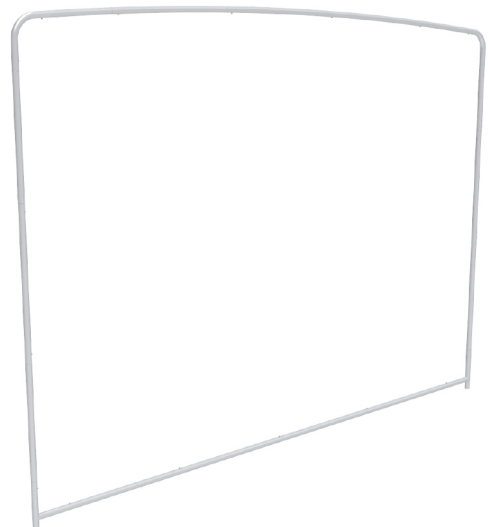
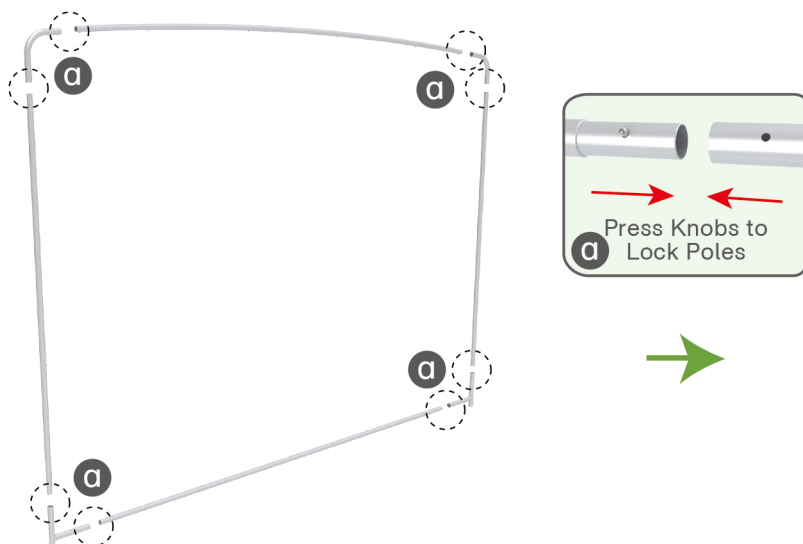
## STEP 01

Connect to make long poles according to labelings.



## STEP 02

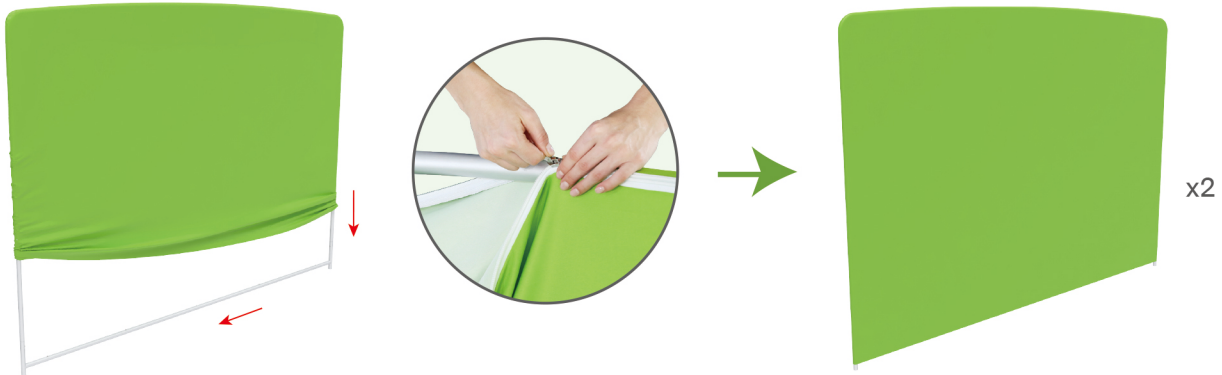
Connect long poles with corner poles according to labelings, connect support pole onto frame.



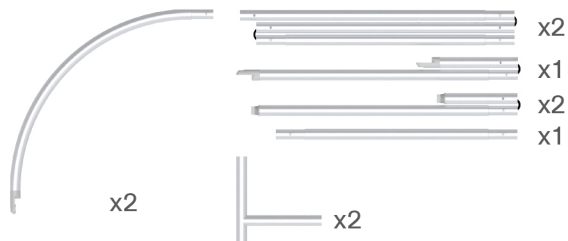
## STEPS

## STEP 03

Slide fabric banner on frame from top and zip up at bottom.



## (1) Hardware

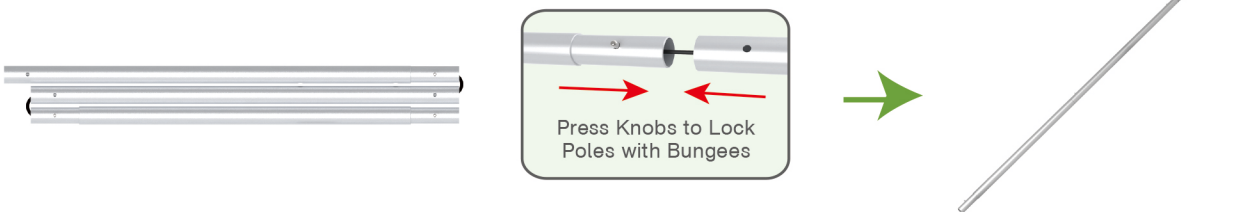


## (2) Printed Graphic Fabric Banner (Optional)



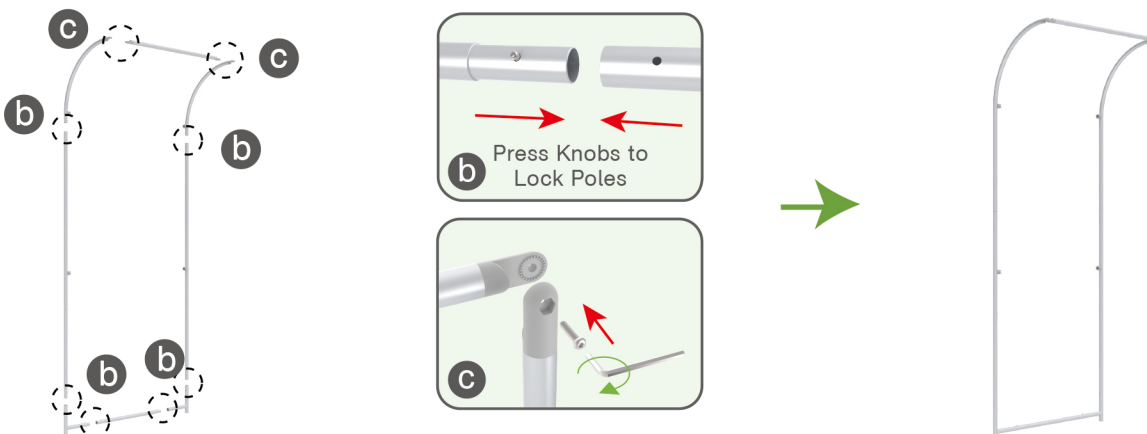
## STEP 01

Connect to make long poles according to labelings.

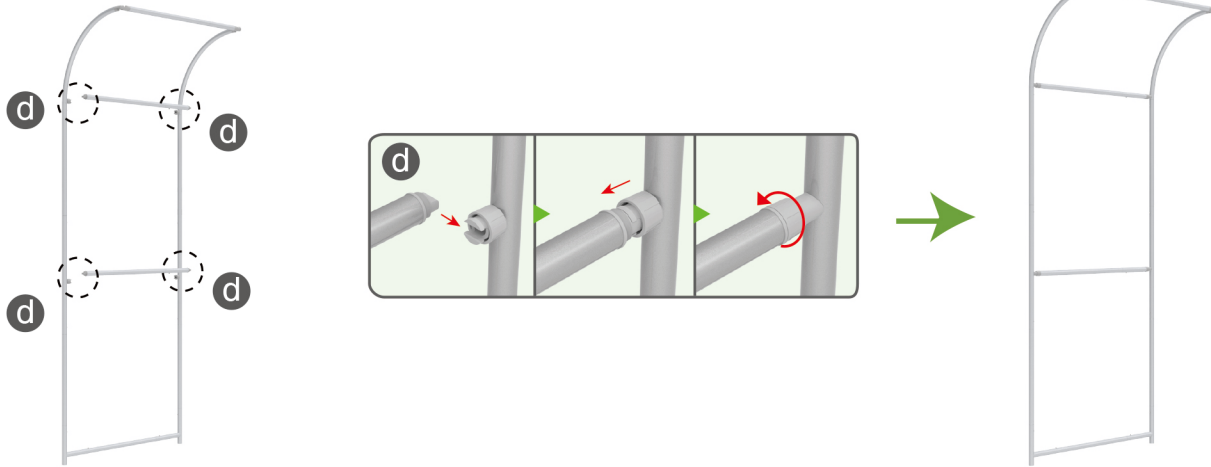
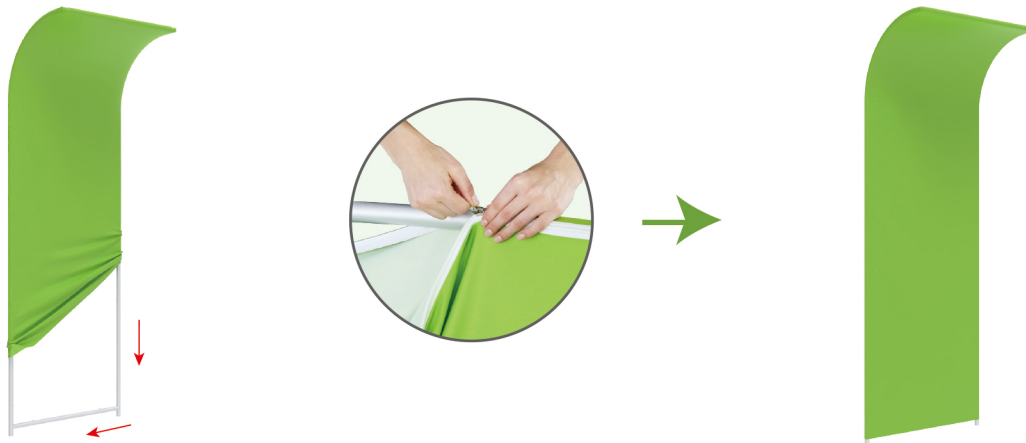


## STEP 02

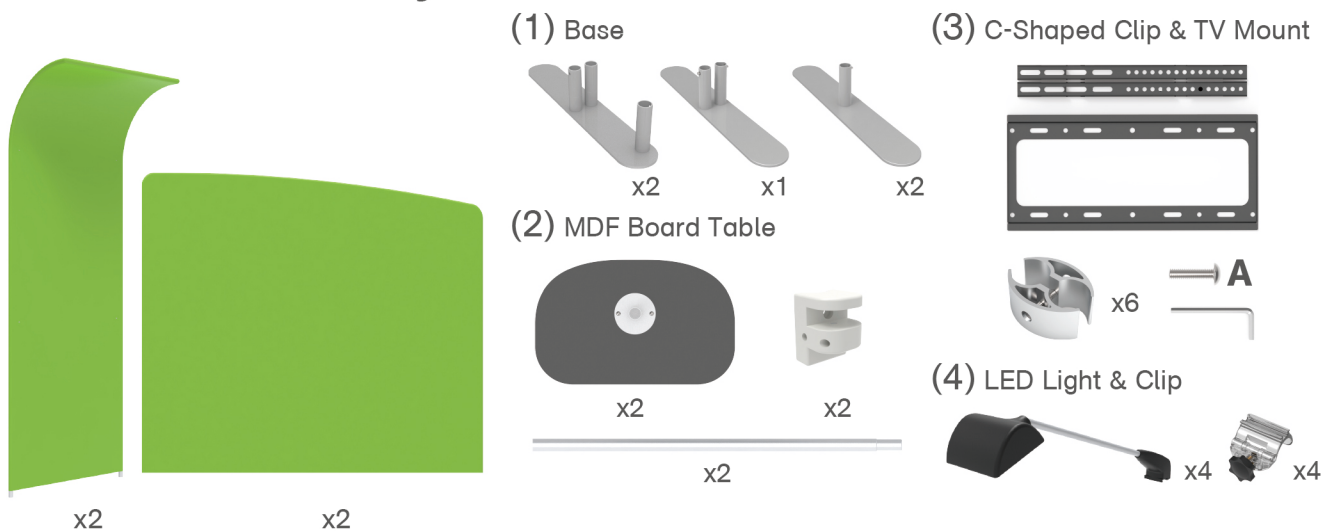
Connect long poles with corner poles according to labelings.



## STEPS

**STEP 03** Install cross bars in position.**STEP 04** Slide fabric banner on frame from top and zip up at bottom.

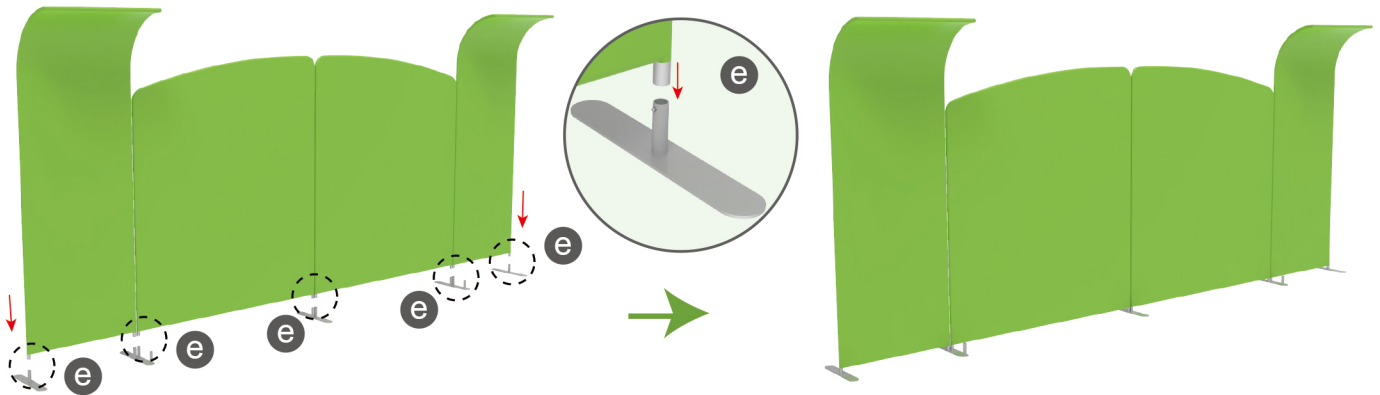
## Booth Set Assembly



## STEPS

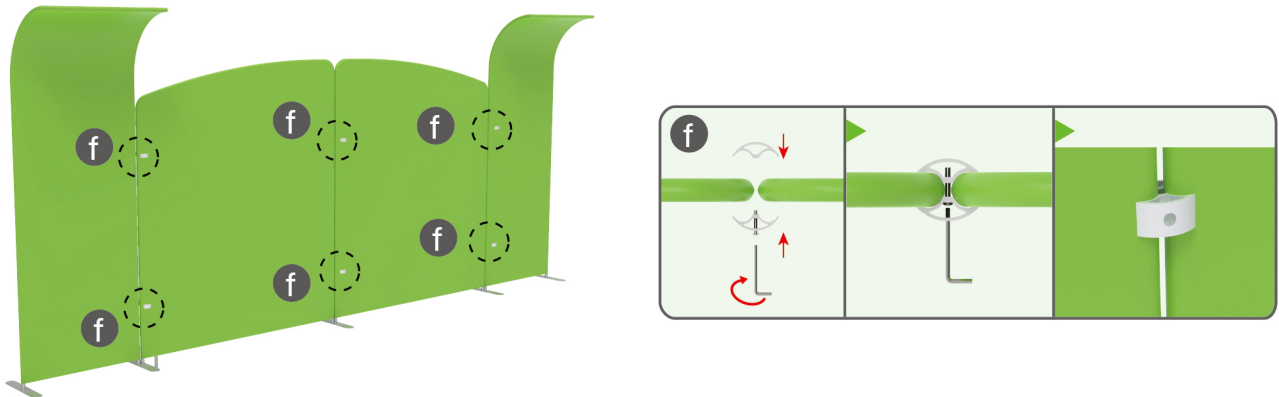
## STEP 01

Insert display stands onto feet by pressing their knobs.



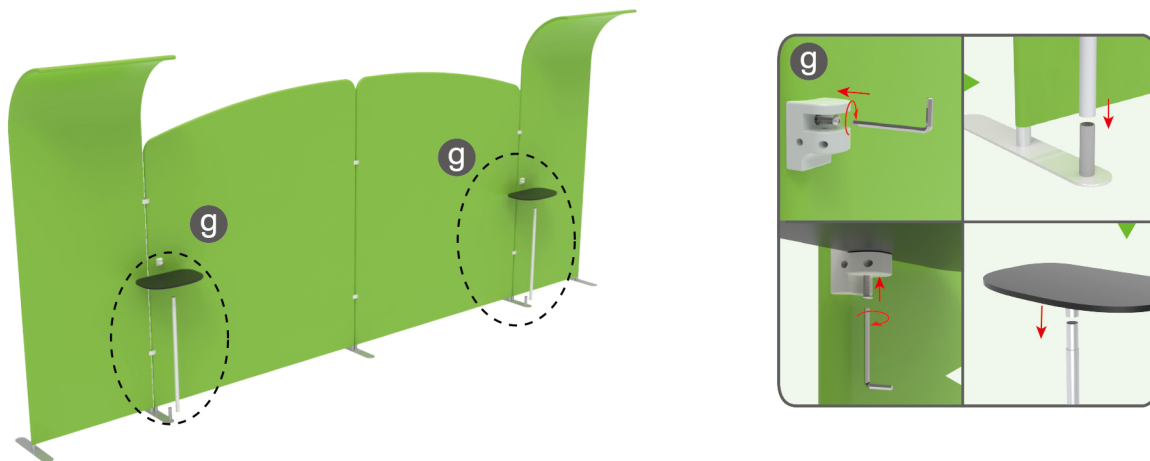
## STEP 02

Interconnect display stands with C-shaped clips.



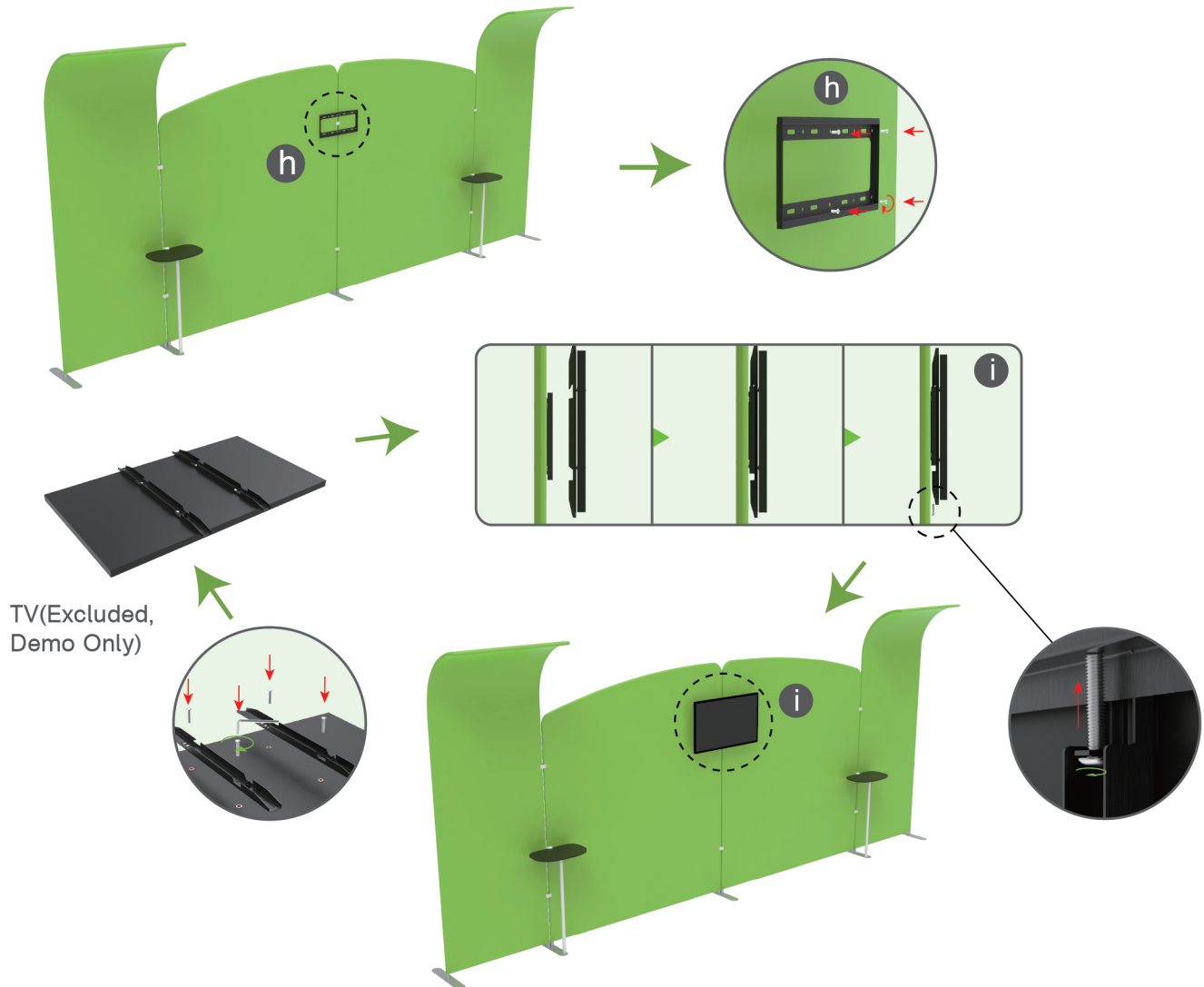
## STEP 03

Insert pole into base, screw clamp with hex wrench, place MDF board onto pole & insert into clamp with screw.

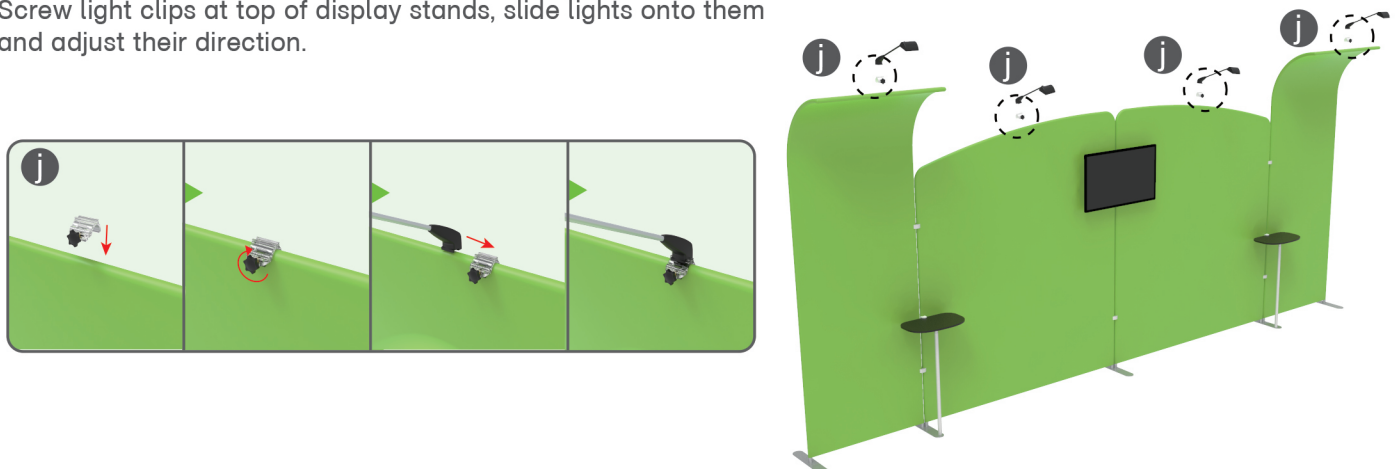




## STEPS

**STEP 04** Screw TV mount with hex wrench.**STEP 05**

Screw light clips at top of display stands, slide lights onto them and adjust their direction.



**STEPS****10X20FT-BOOTH-05**