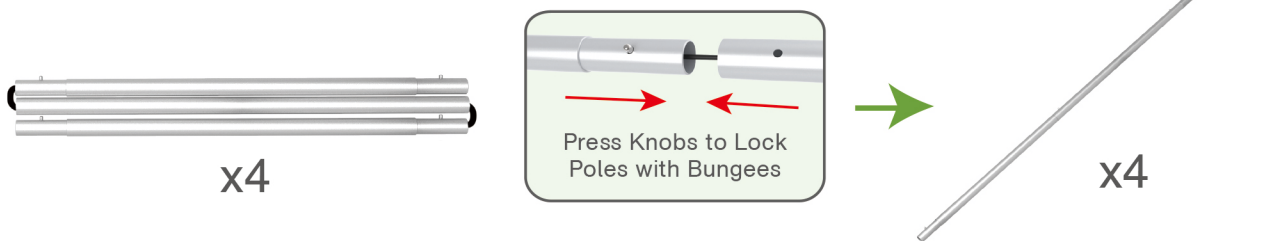
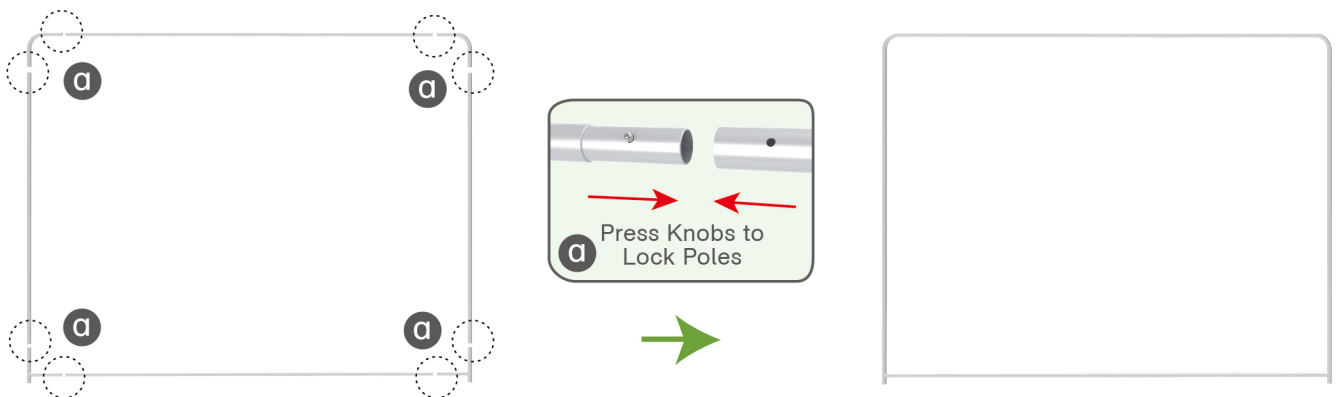
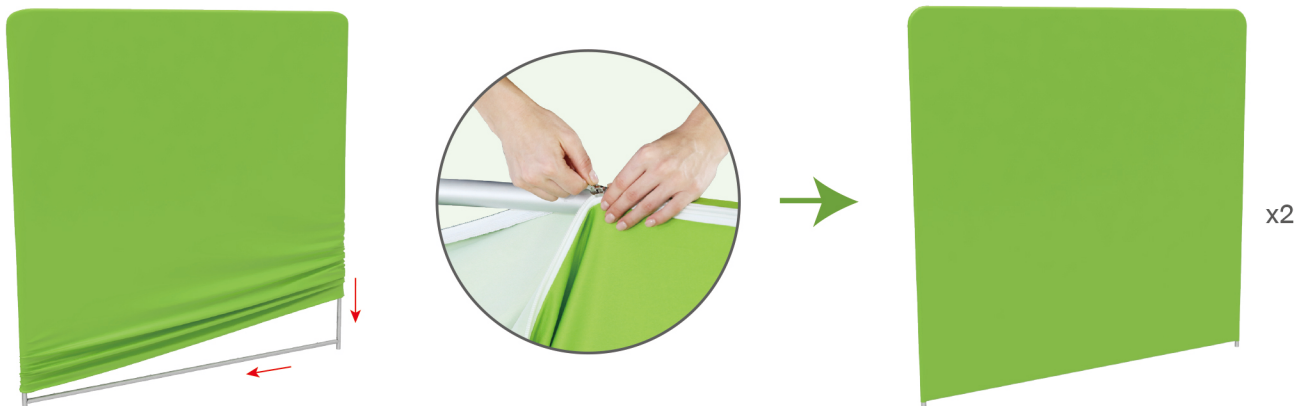


STEPS

(1) Hardware

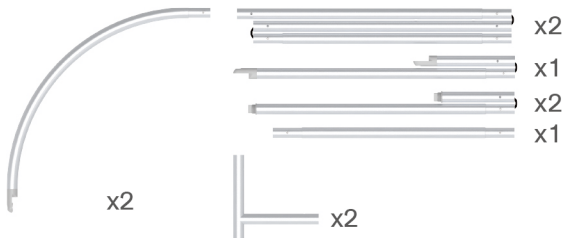


(2) Printed Graphic Fabric Banner (Optional)

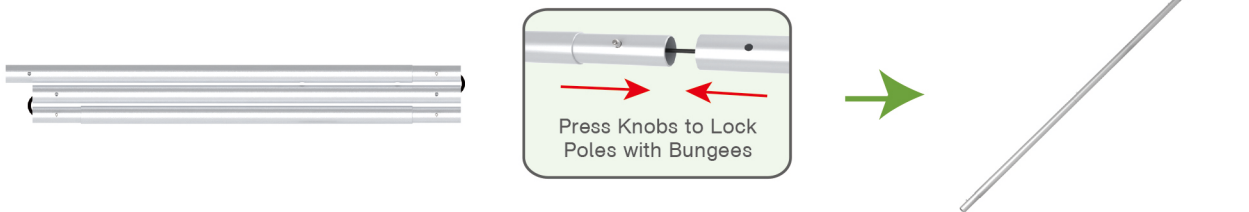
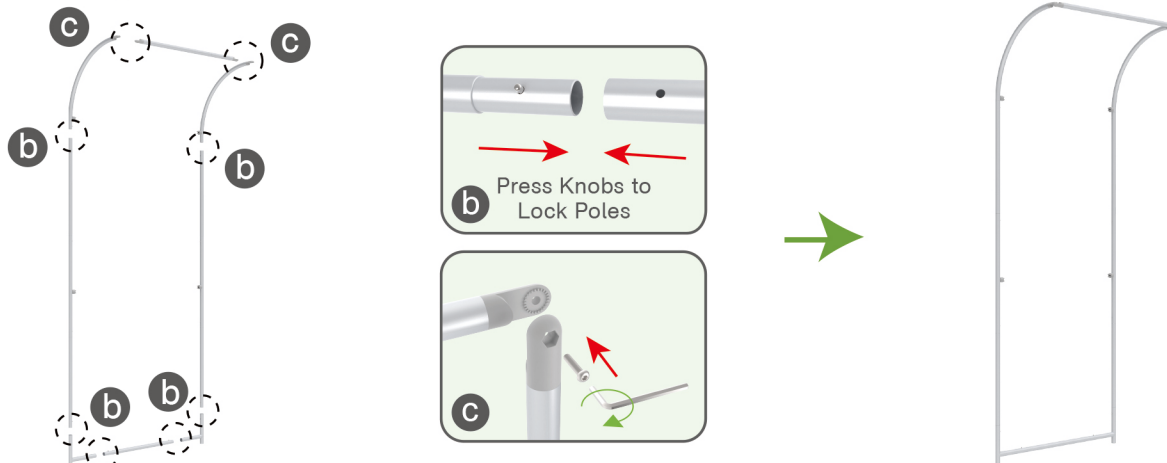
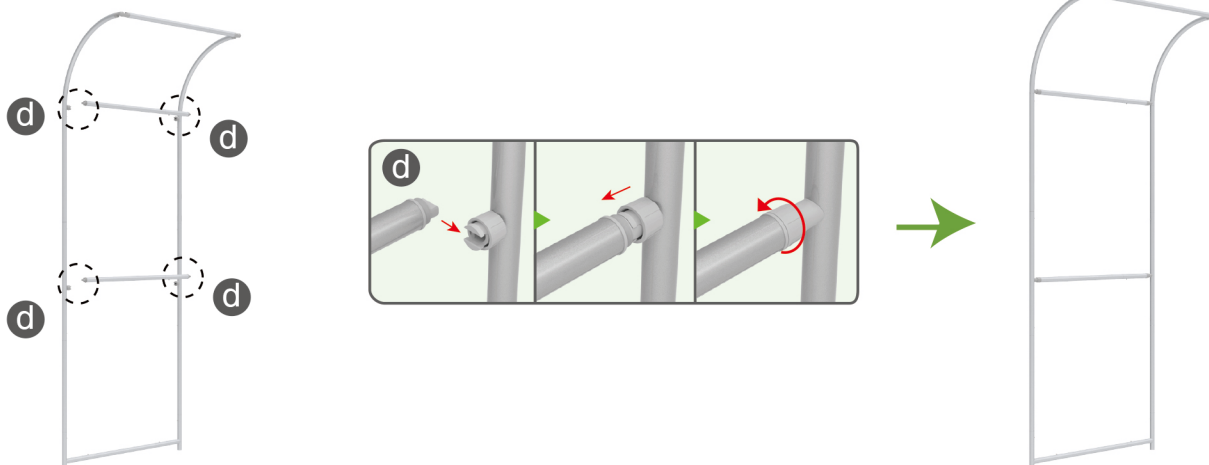
**STEP 01** Connect to make long poles according to labelings.**STEP 02** Connect long poles with corner poles according to labelings.**STEP 03** Slide fabric banner on frame from top and zip up at bottom.

STEPS

(1) Hardware

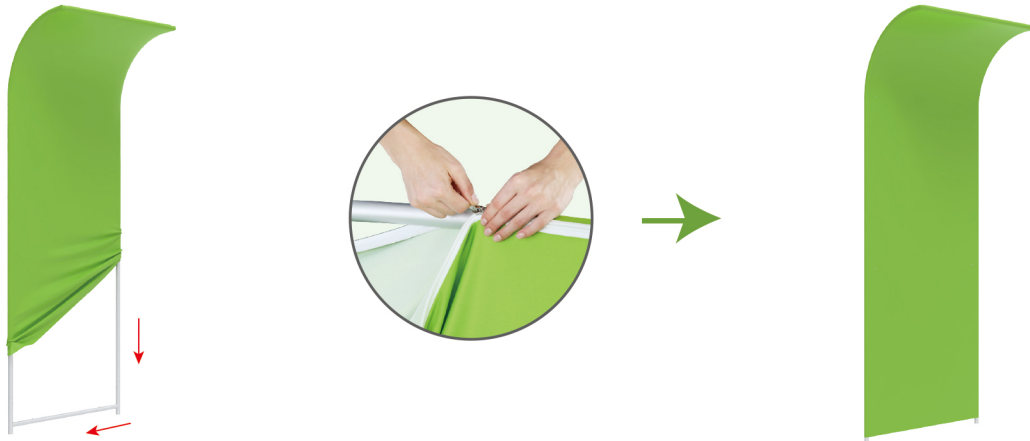


(2) Printed Graphic Fabric Banner

**STEP 01** Connect to make long poles according to labelings.**STEP 02** Connect long poles with corner poles according to labelings.**STEP 03** Install cross bars in position.

STEPS

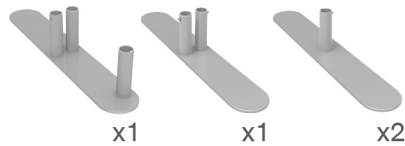
STEP 04 Slide fabric banner on frame from top and zip up at bottom.



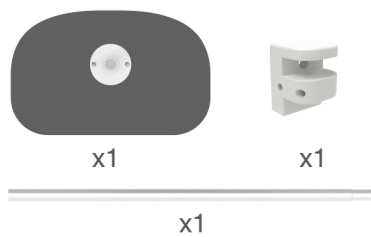
Booth Set Assembly



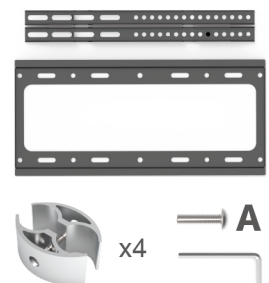
(1) Base



(2) MDF Board Table



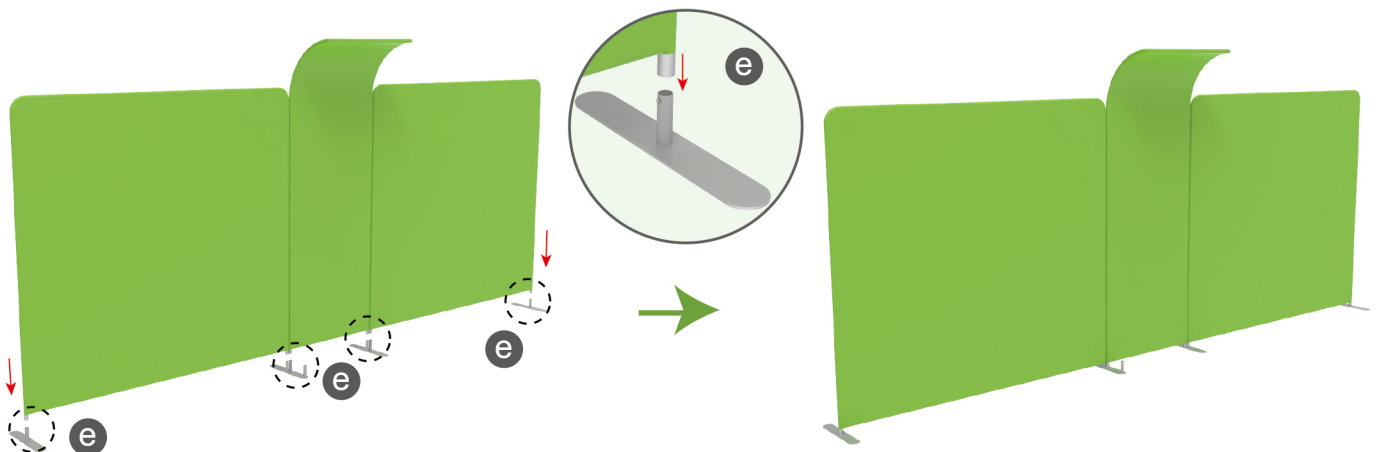
(3) C-Shaped Clip & TV Mount



(4) LED Light & Clip

**STEP 01**

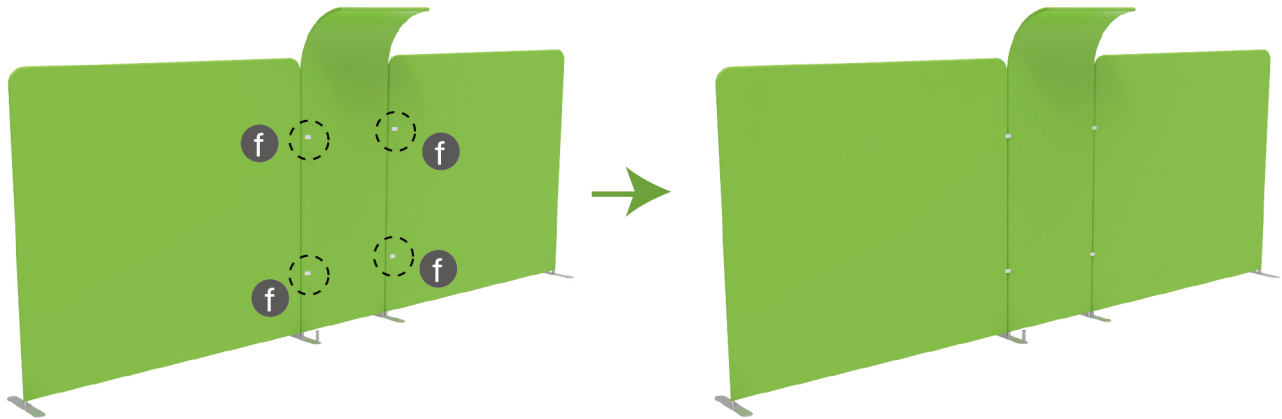
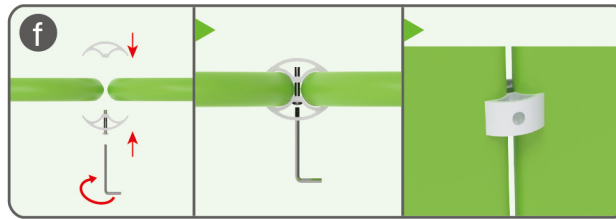
Insert display stands onto feet by pressing their knobs.



STEPS

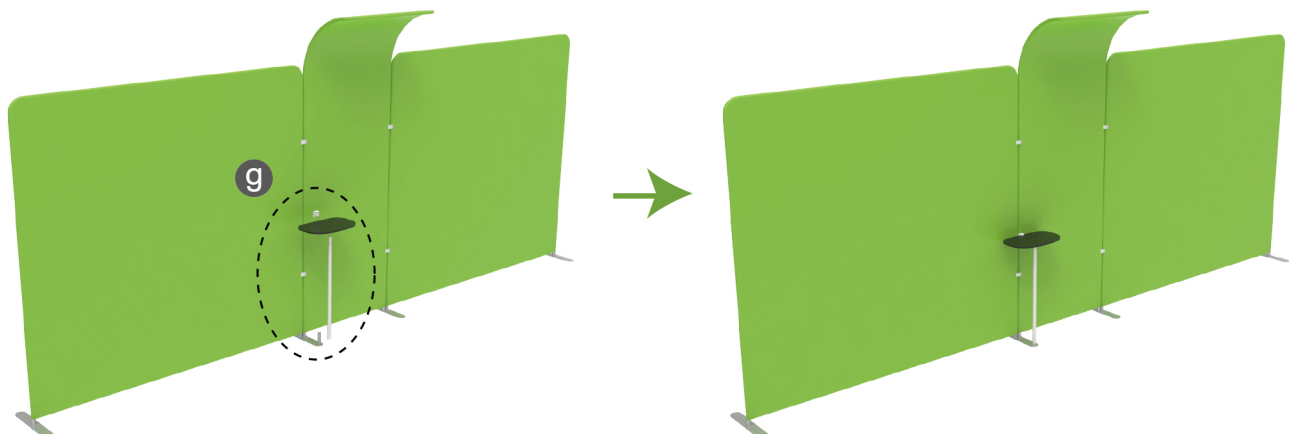
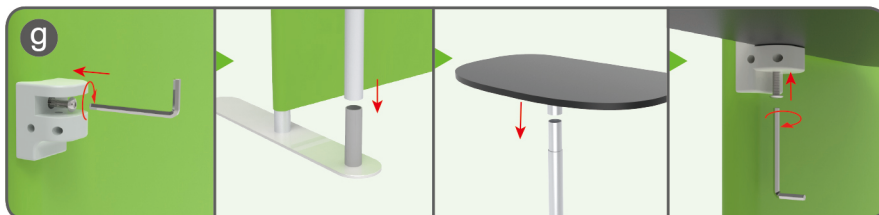
STEP 02

Interconnect display stands with C-shaped clips.

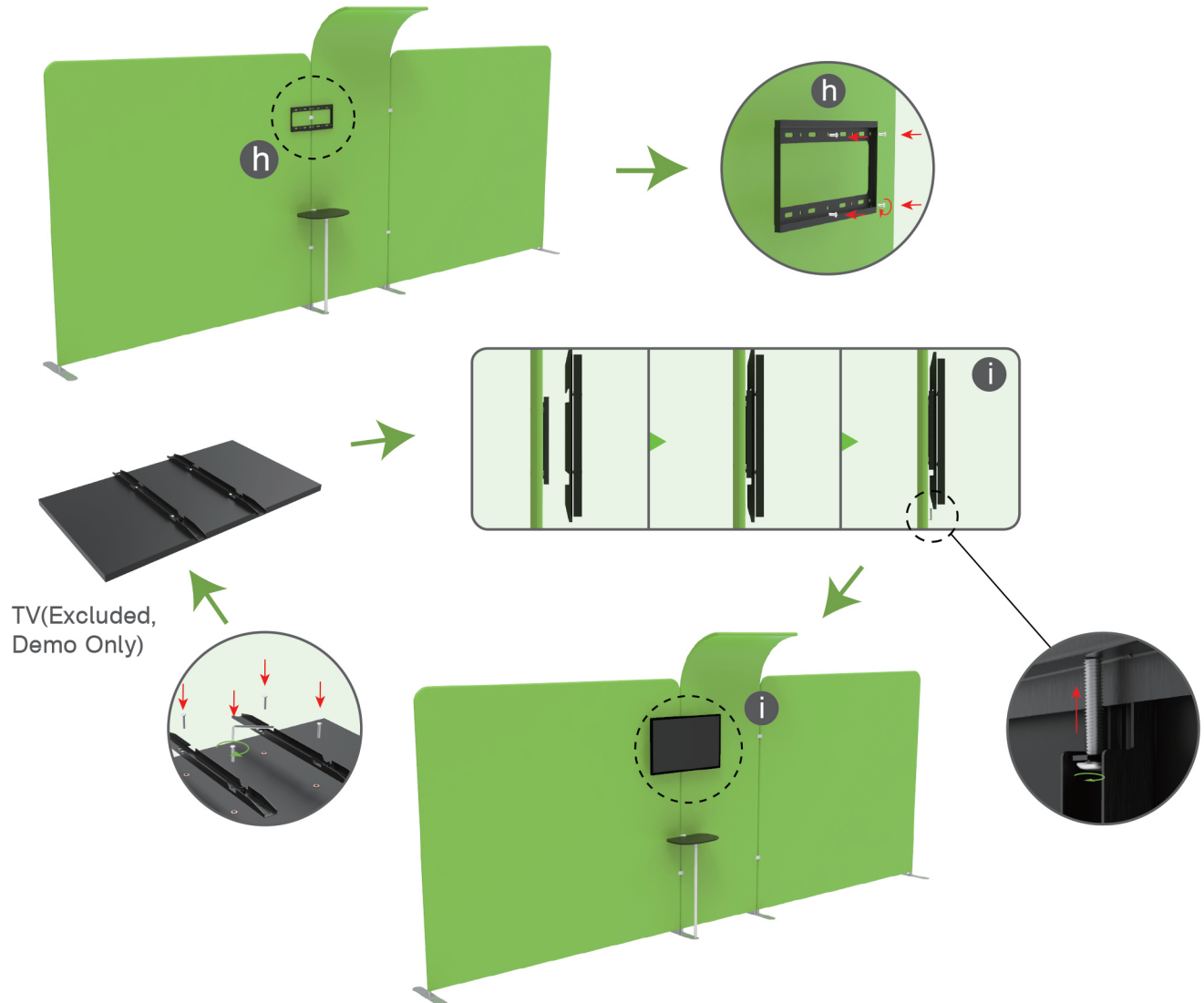


STEP 03

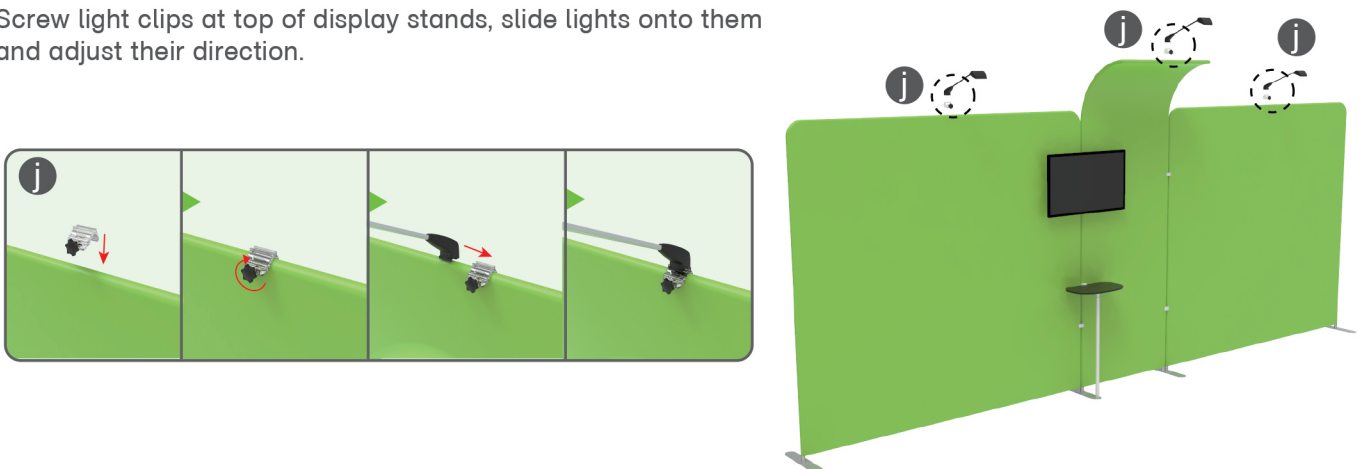
Insert pole into base, screw clamp with hex wrench, place MDF board onto pole & insert into clamp with screw.



STEPS

STEP 04 Screw TV mount with hex wrench.**STEP 05**

Screw light clips at top of display stands, slide lights onto them and adjust their direction.



STEPS**10X20FT-BOOTH-04**