

STEPS

(1) Hardware

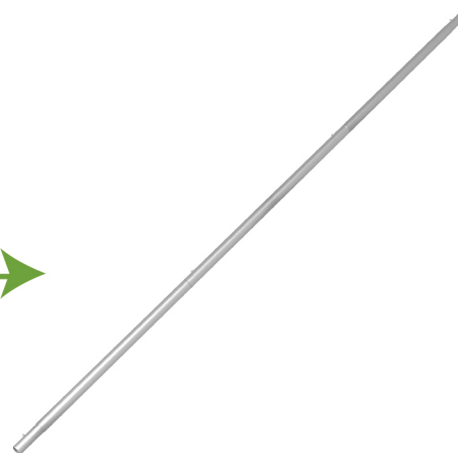
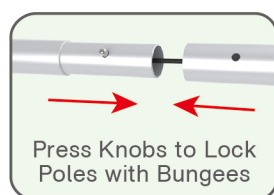


(2) Printed Graphic Fabric Banner (Optional)



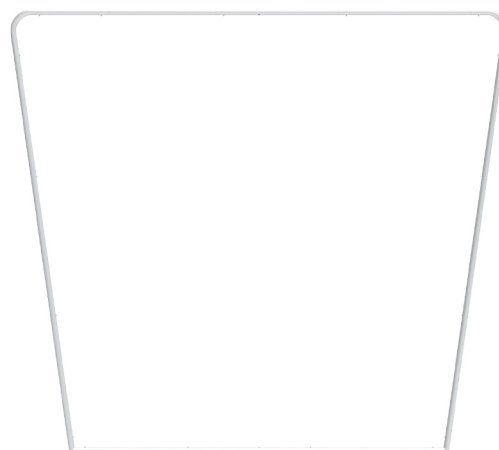
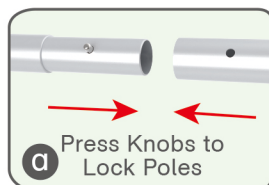
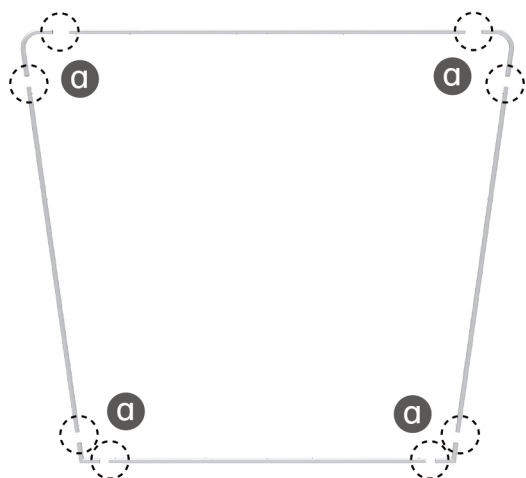
STEP 01

Connect to make long poles according to labelings.



STEP 02

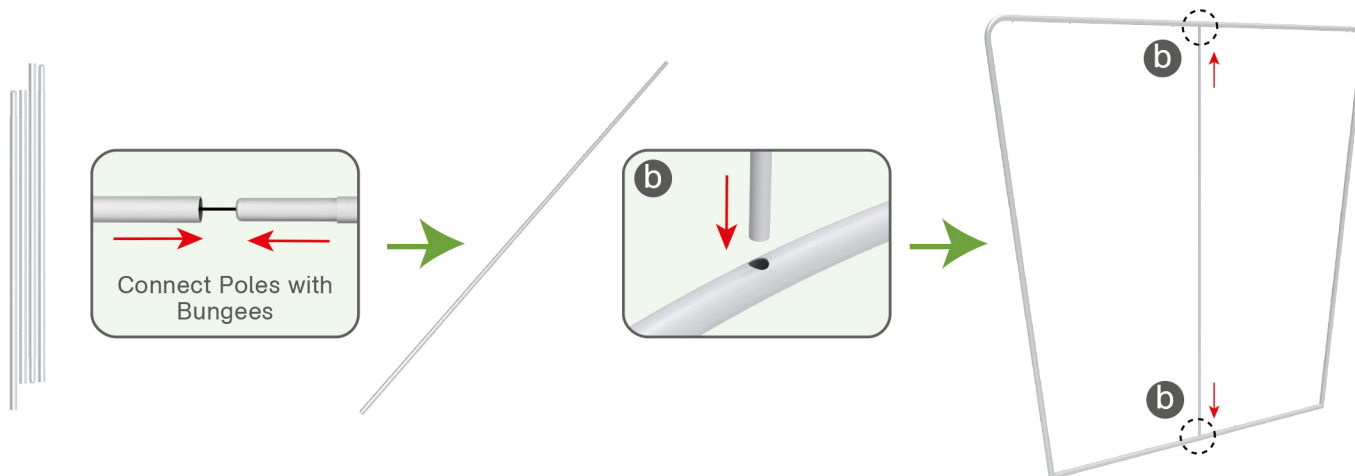
Connect long poles with corner poles according to labelings.



STEPS

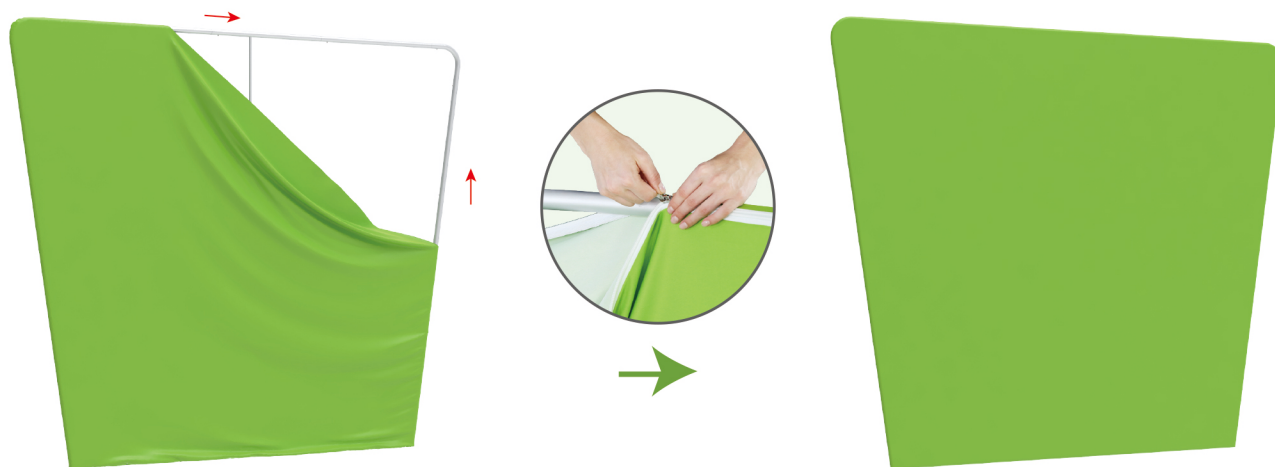
STEP 03

Connect poles with bungees for making middle support pole to insert in position.

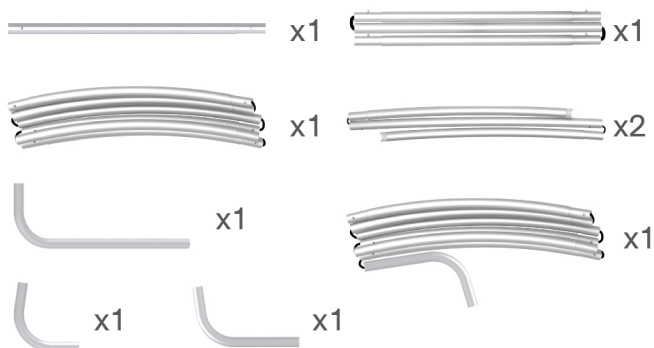


STEP 04

Slide fabric banner on frame from bottom and zip up at top.



(1) Hardware



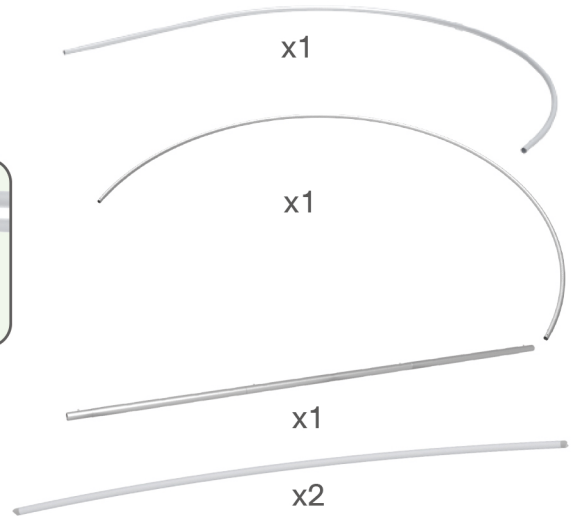
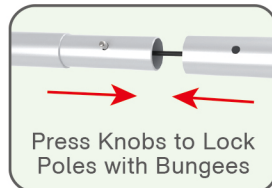
(2) Printed Graphic Fabric Banner (Optional)



STEPS

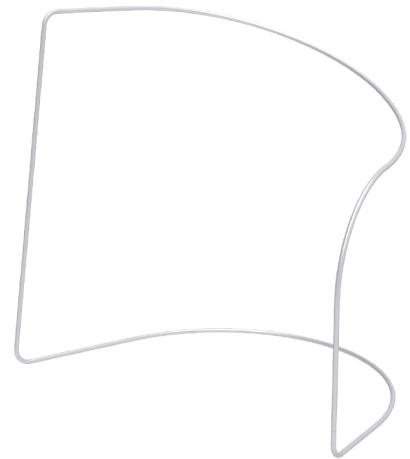
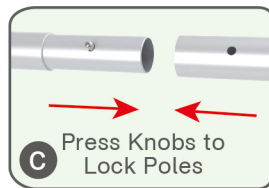
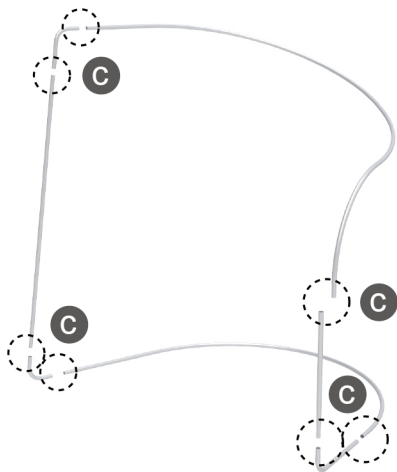
STEP 01

Connect to make long poles according to labelings.



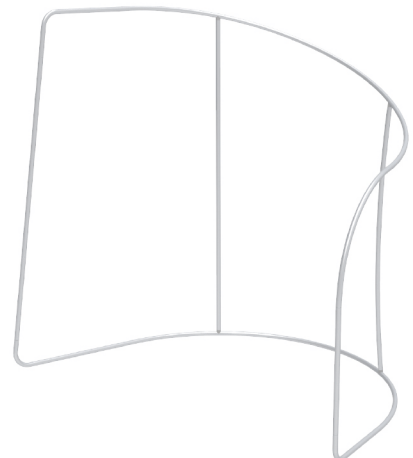
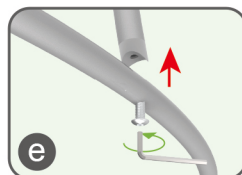
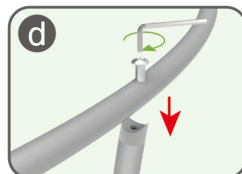
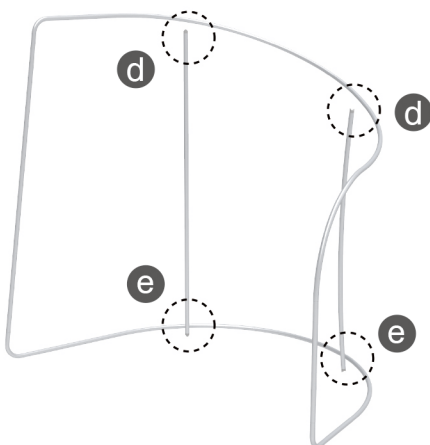
STEP 02

Connect long poles with corner poles according to labelings.



STEP 03

Connect support poles onto frame.



STEPS

STEP 04 Slide fabric banner on frame from bottom and zip up at top.



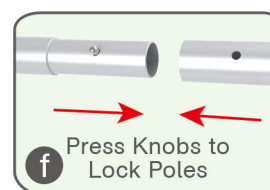
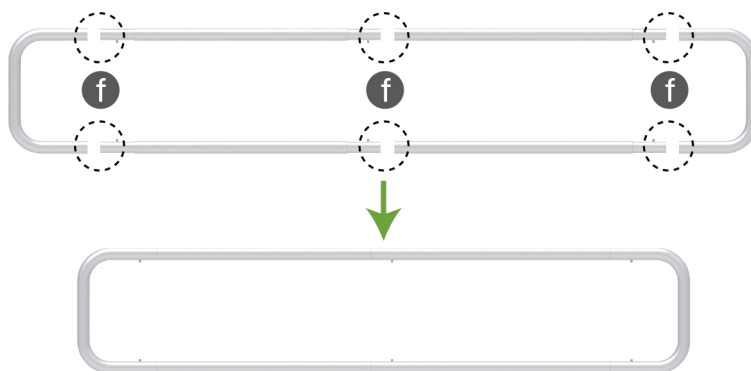
(1) Hardware



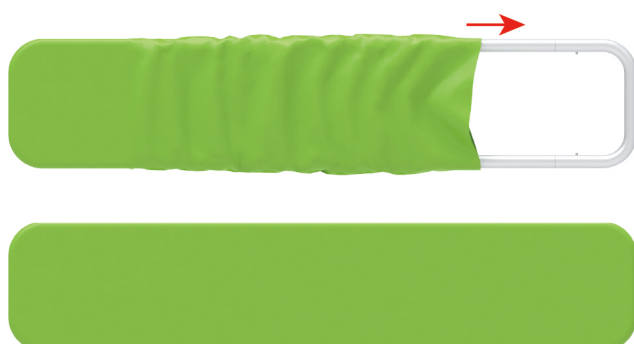
(2) Printed Graphic Fabric Banner (Optional)



STEP 01 Connect poles according to labelings.



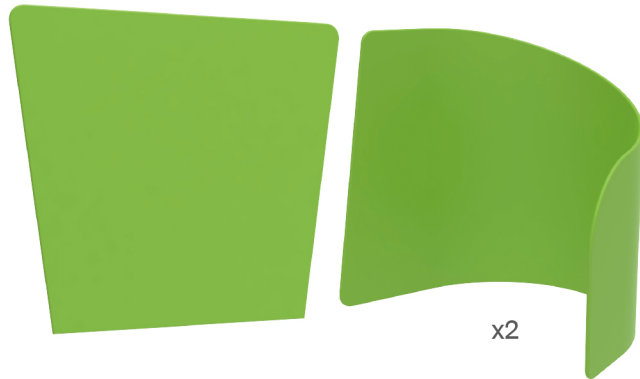
STEP 02 Slide fabric banner on frame from left and zip up at right.



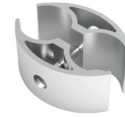
★ One Tool (Hex Wrench)

STEPS

Booth Set Assembly



(1) 180° C-Shaped Clip

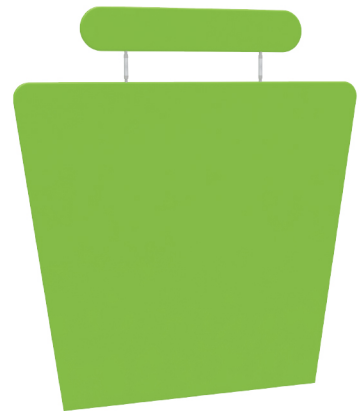
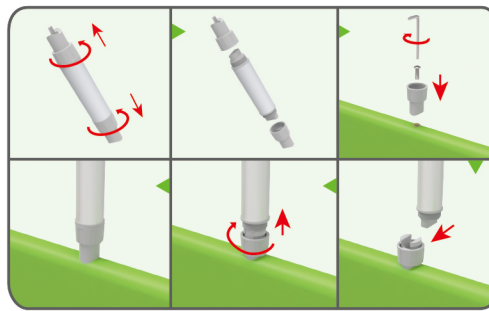
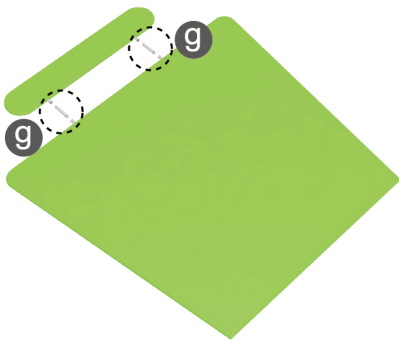


x4



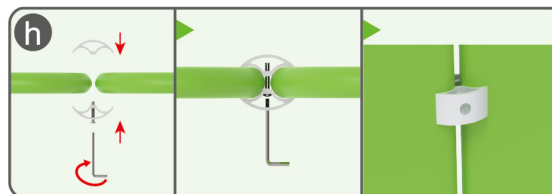
STEP 01

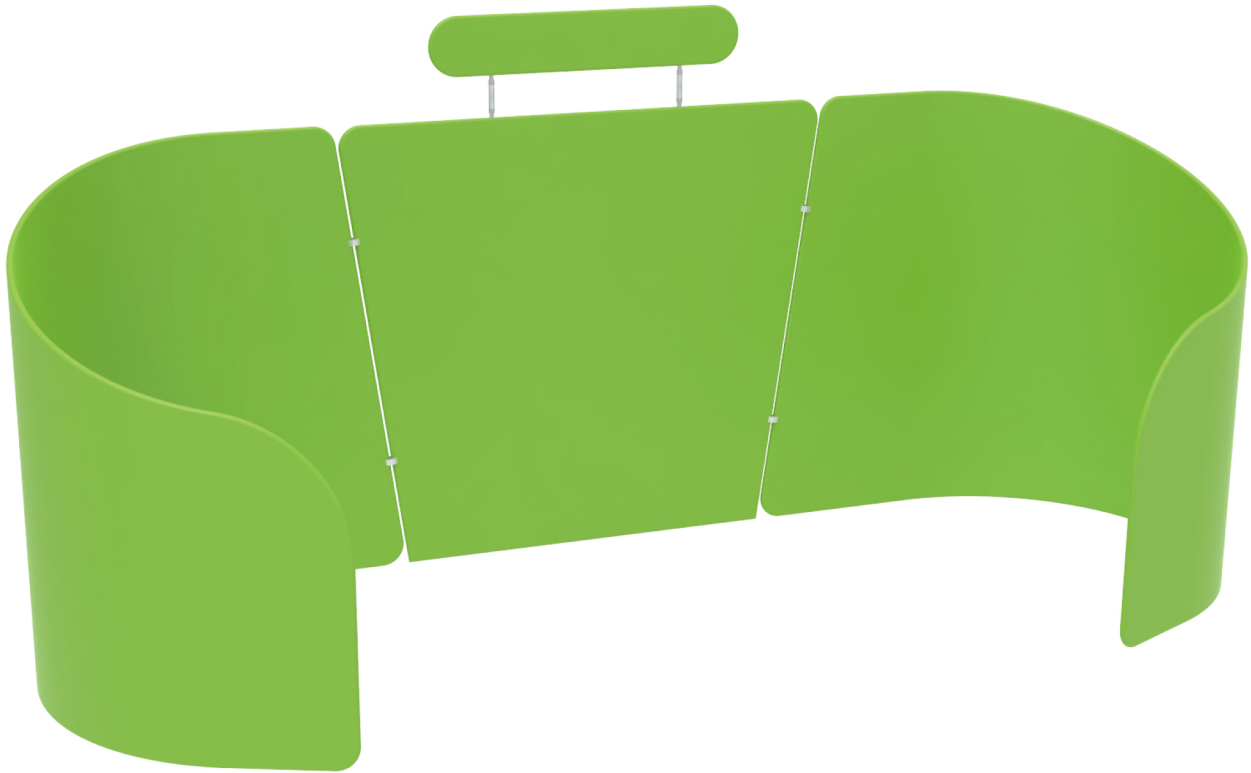
Connect header and display stand with support poles.



STEP 02

Interconnect display stands with C-shaped clips.



STEPS**10X20FT-BOOTH-09**