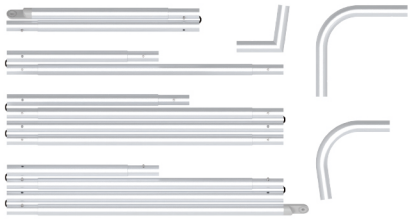
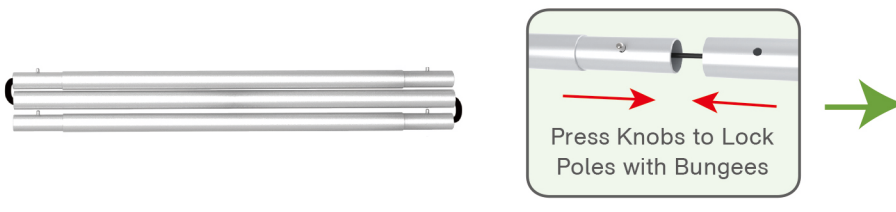
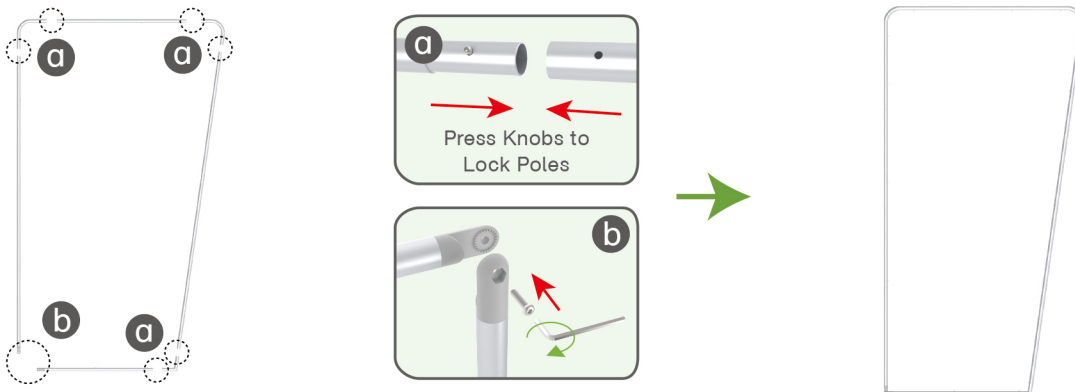
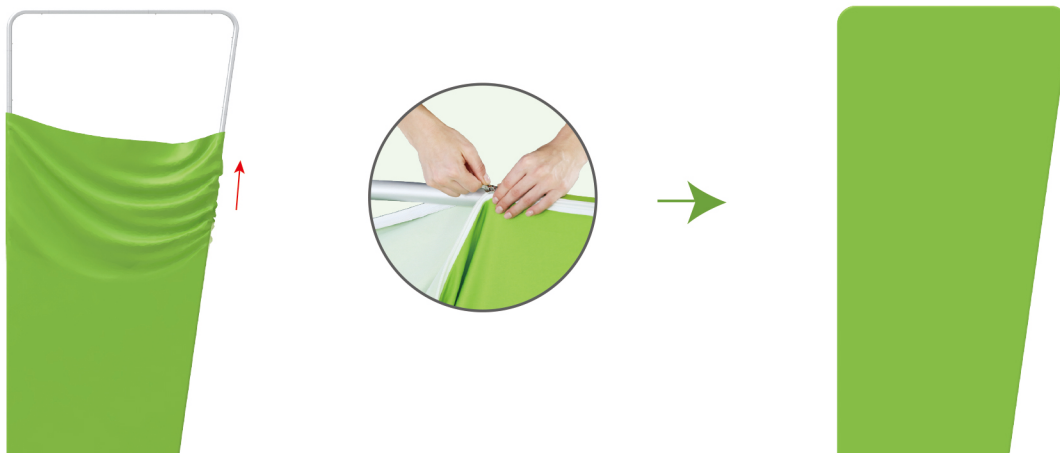


## STEPS

(1) Hardware

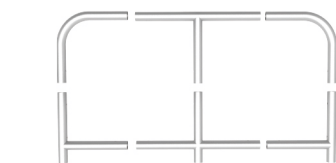


(2) Printed Graphic Fabric Banner (Optional)

**STEP 01** Connect to make long poles according to labelings.**STEP 02** Connect long poles with corner poles according to labelings.**STEP 03** Slide fabric banner on frame from bottom and zip up at top.

## STEPS

## (1) Hardware



x3



x4

## (2) Printed Graphic Fabric Banner (Optional)



## STEP 01

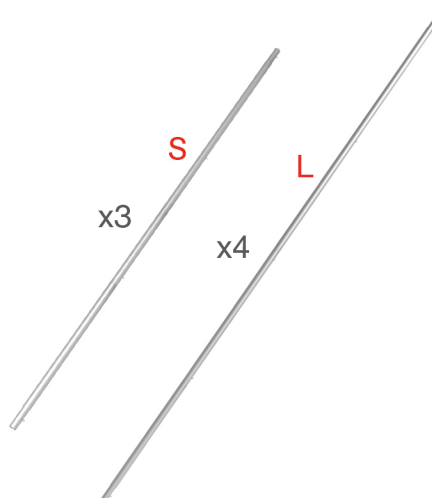
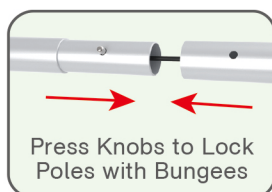
Connect to make long poles according to labelings.



x3

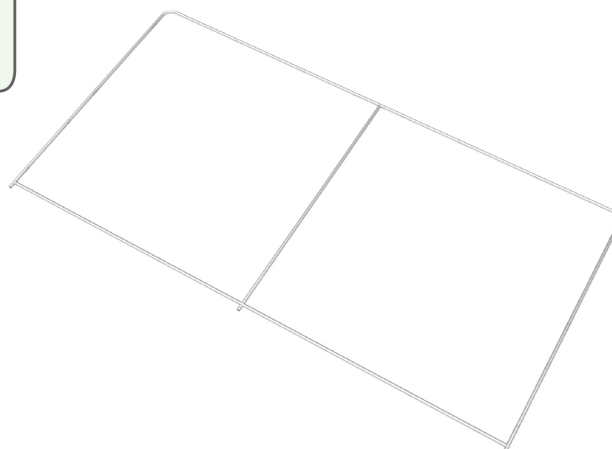
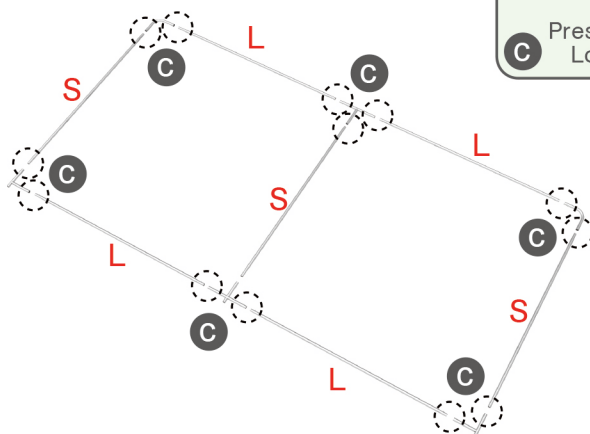
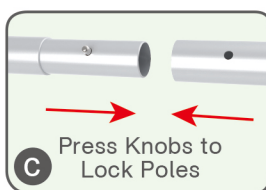


x4



## STEP 02

Connect long poles with corner poles according to labelings.

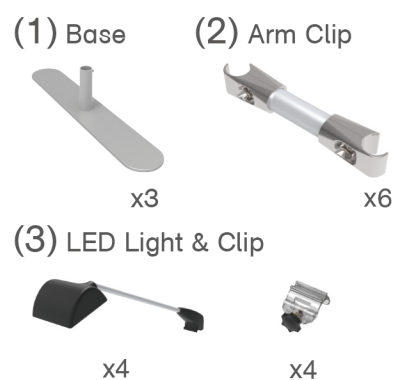


## STEPS

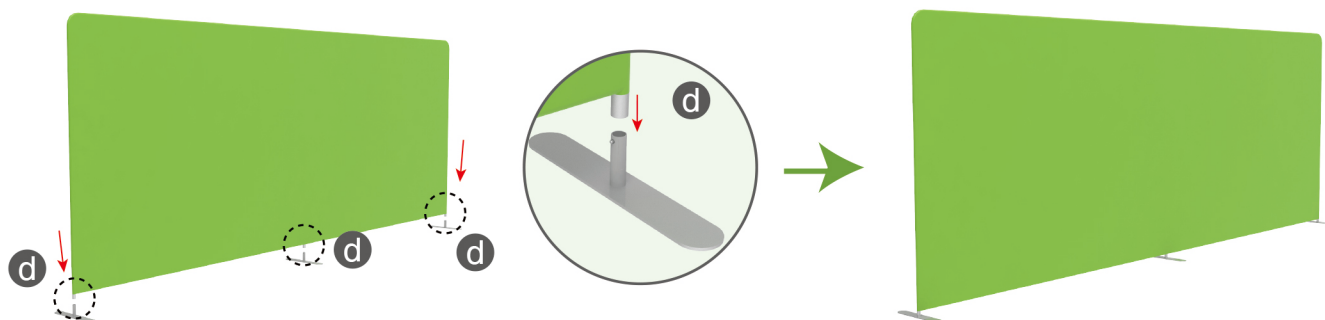
**STEP 03** Slide fabric banner on frame from top and zip up at bottom.



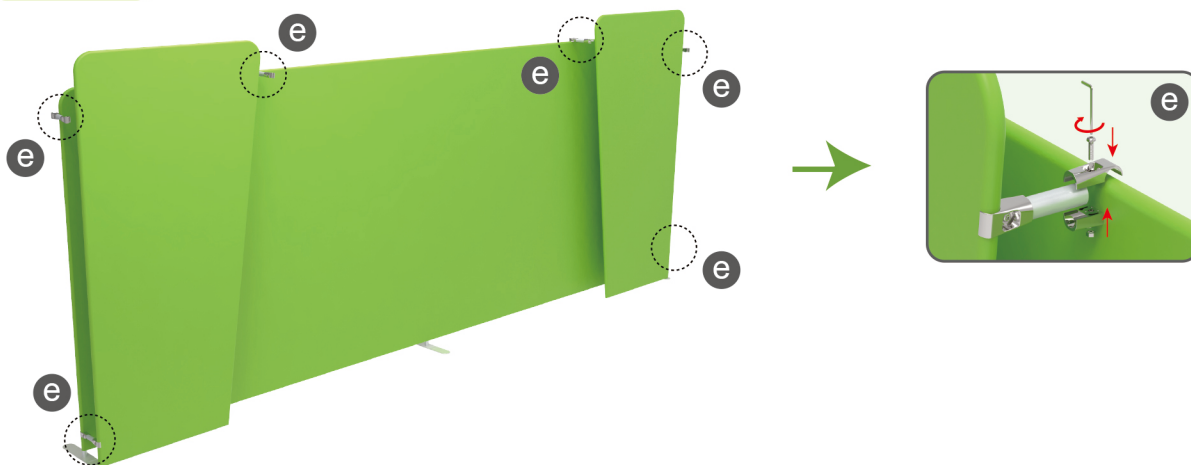
## Booth Set Assembly



**STEP 01** Insert display stands onto feet by pressing their knobs.



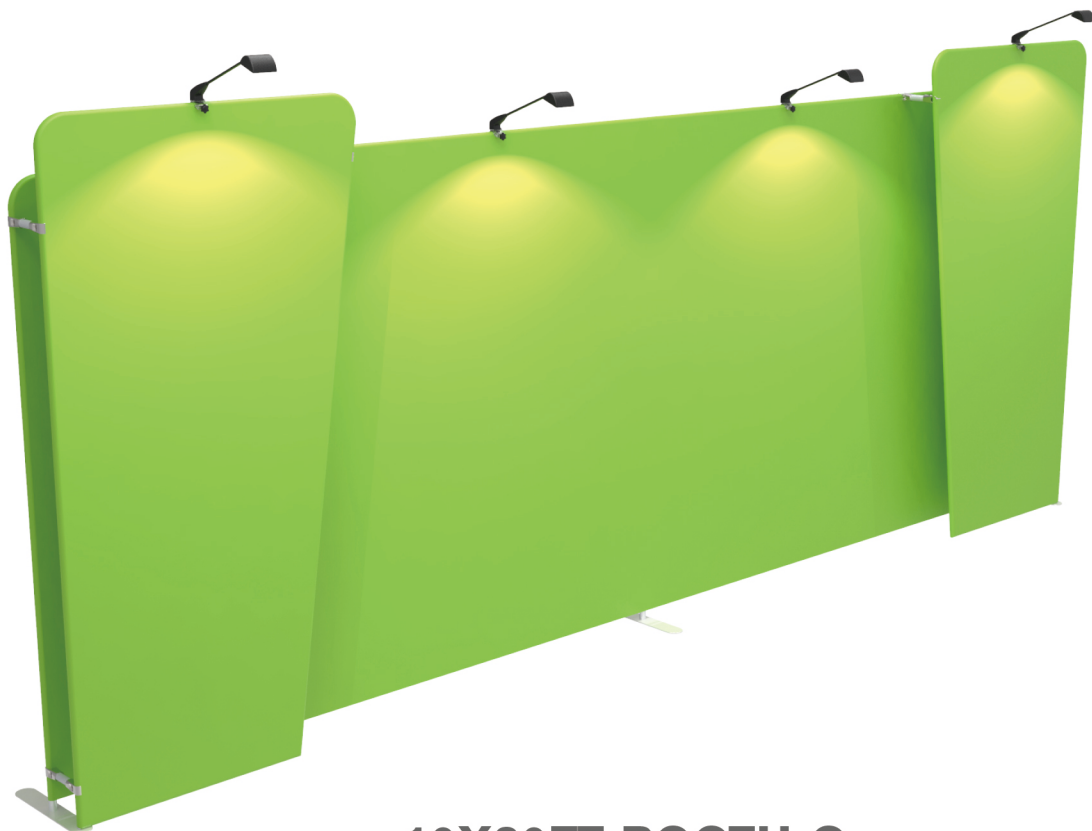
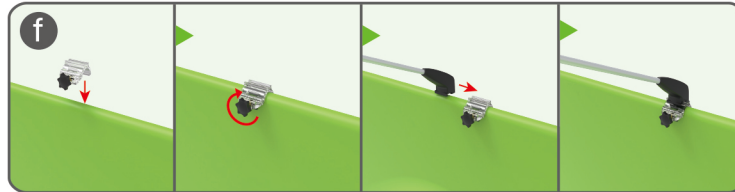
**STEP 02** Connect display stands with joint clamps.



## STEPS

## STEP 03

Screw light clips at top of display stands, slide lights onto them and adjust their direction.

**10X20FT-BOOTH-O**