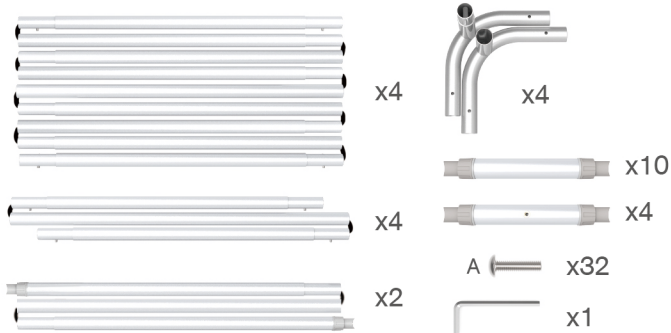


★ One Tool (Hex Wrench)

STEPS

(1) Hardware

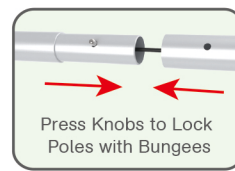


(2) Printed Graphic Fabric Banner (Optional)



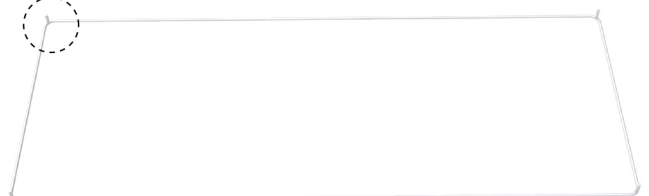
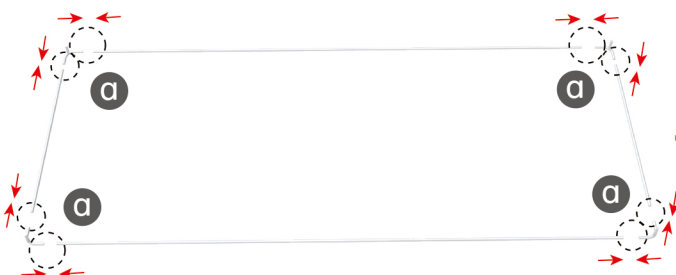
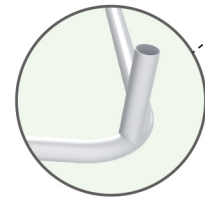
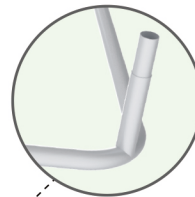
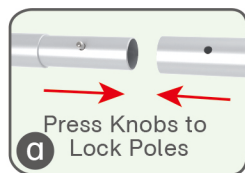
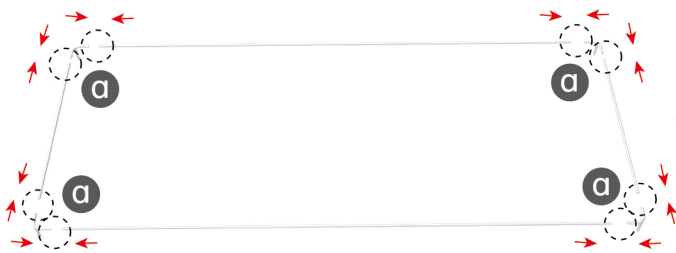
STEP 01

Connect to make long poles according to labelings.



STEP 02

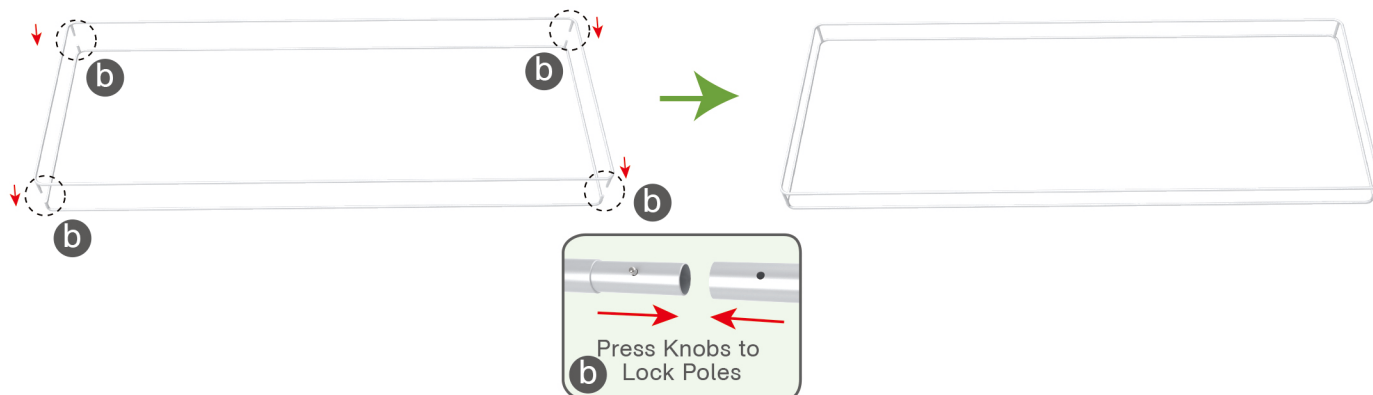
Connect long poles with corner poles according to labelings.



STEPS

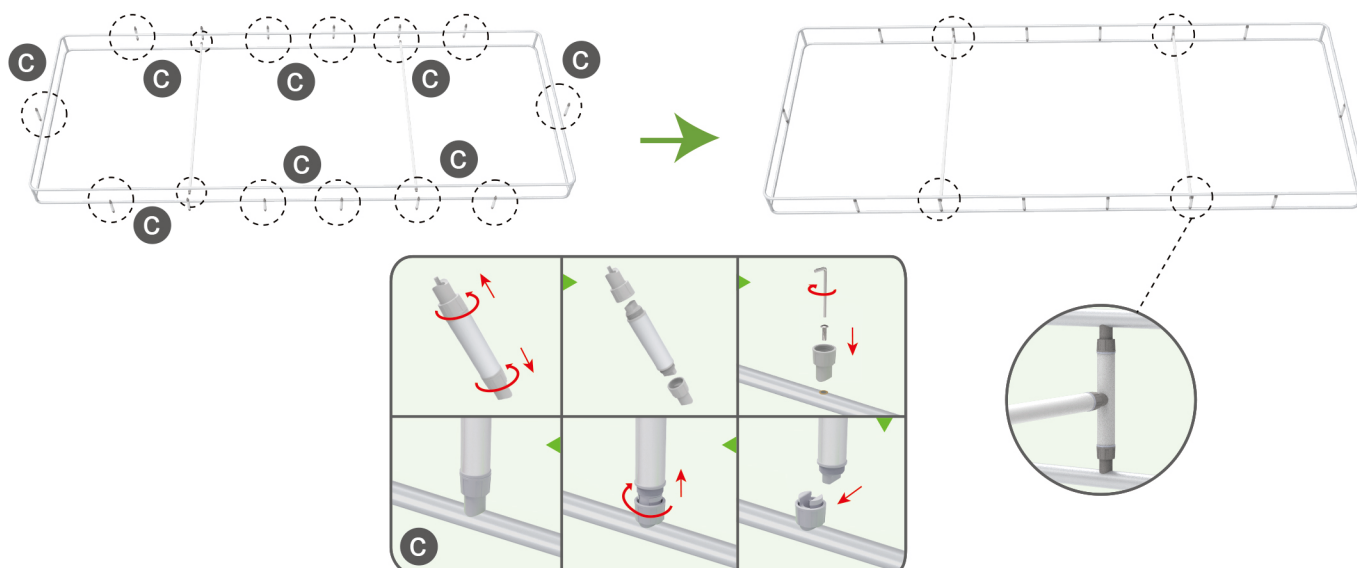
STEP 03

Interconnect corner poles to make column frame according to labelings.



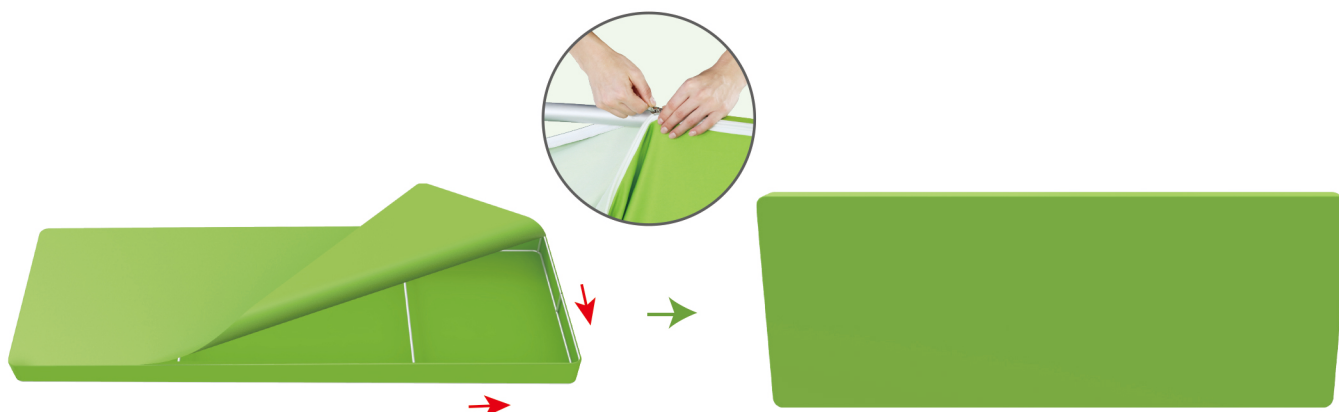
STEP 04

Connect support poles onto column frame.



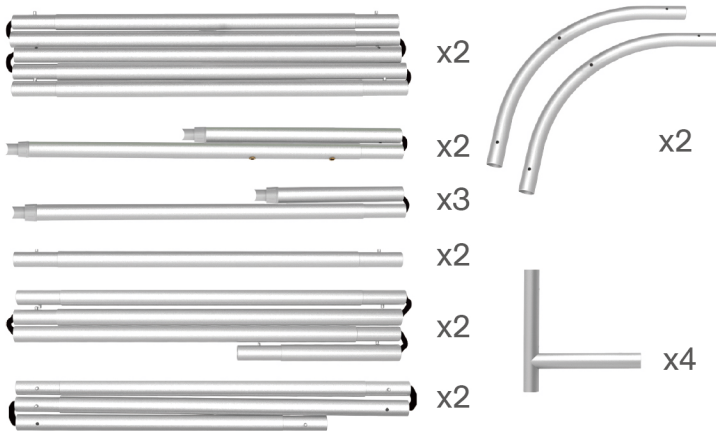
STEP 05

Slide fabric banner on frame from top and zip up at bottom.



STEPS

(1) Hardware

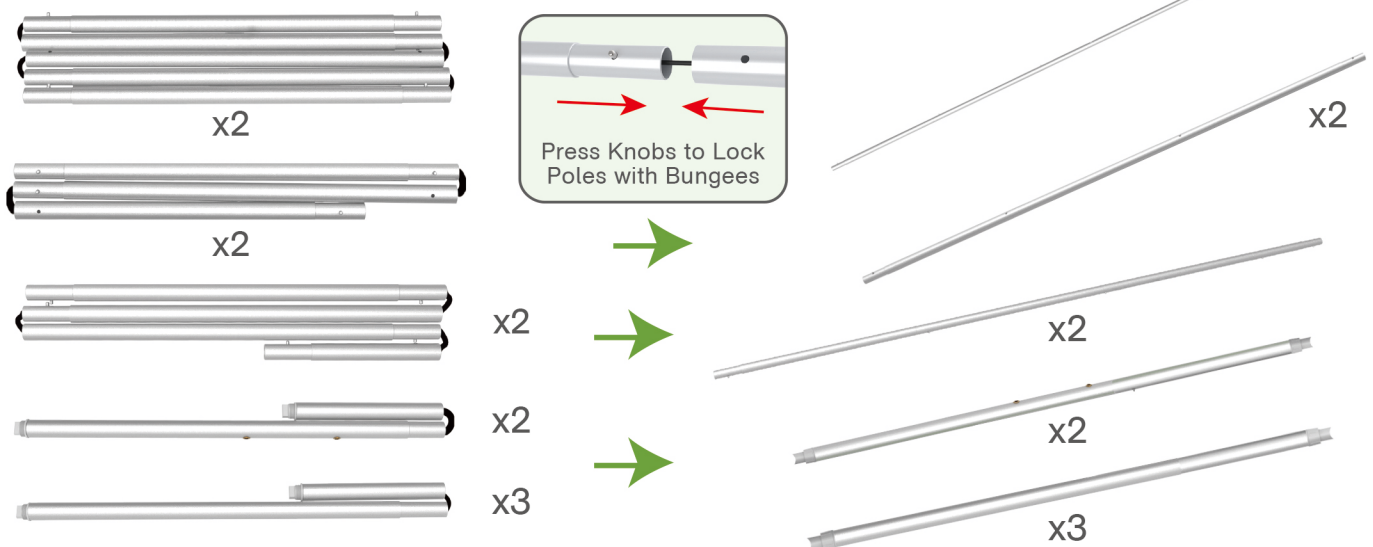


(2) Printed Graphic Fabric Banner (Optional)



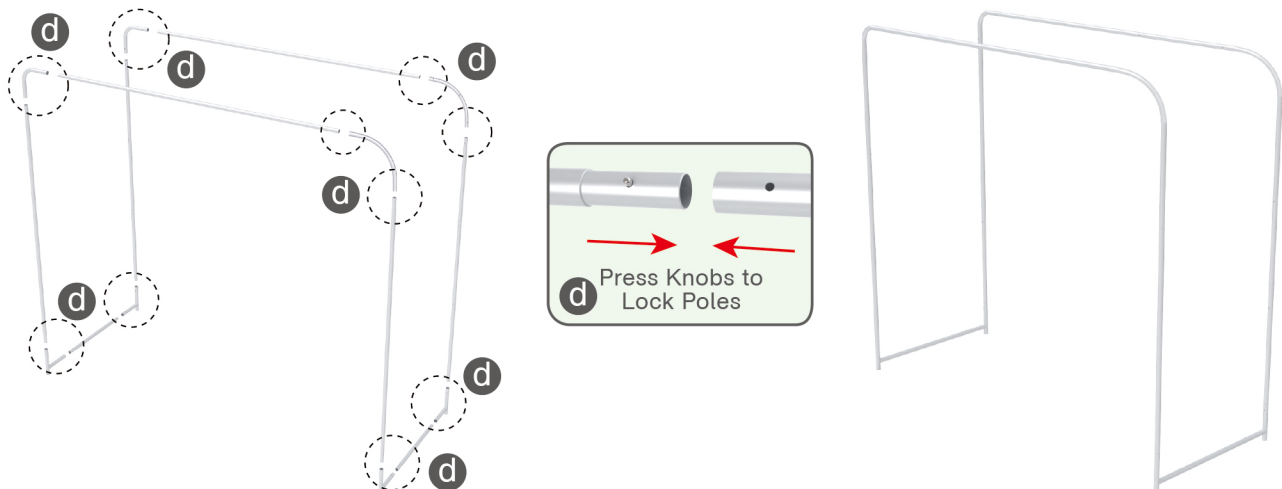
STEP 01

Connect to make long poles according to labelings.

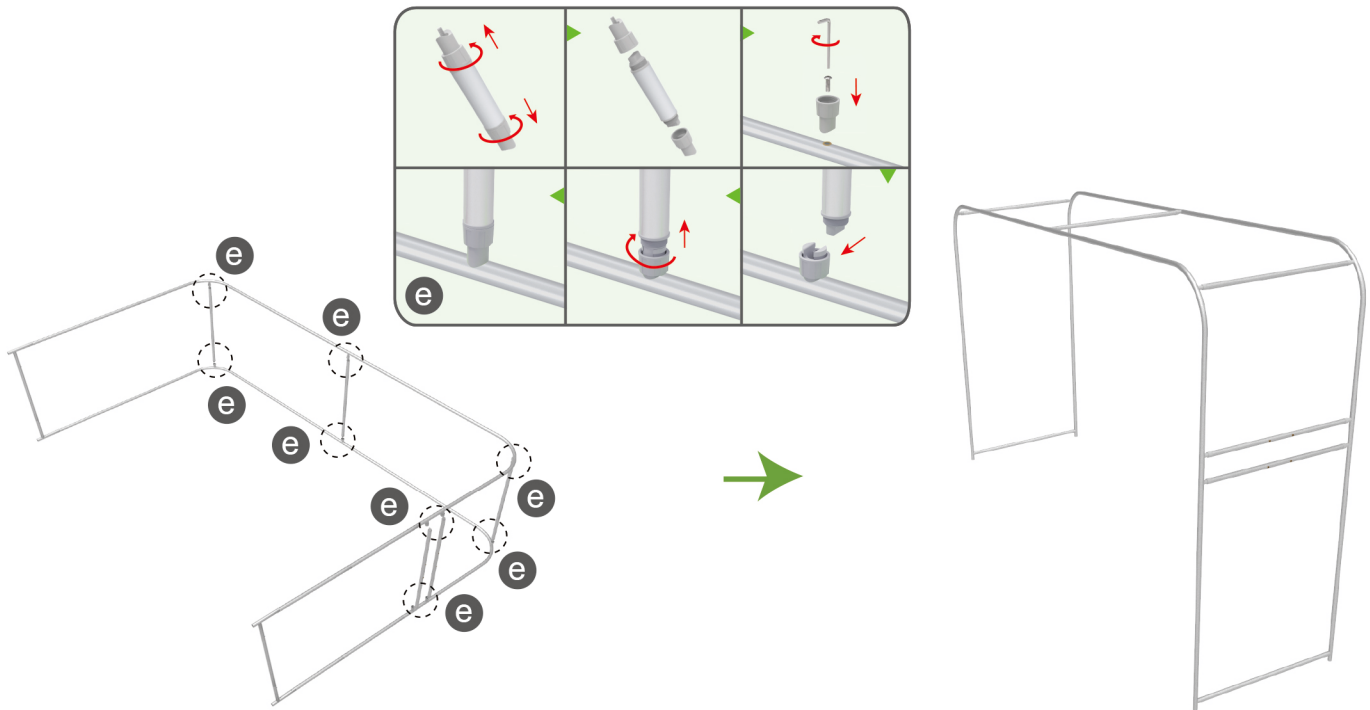
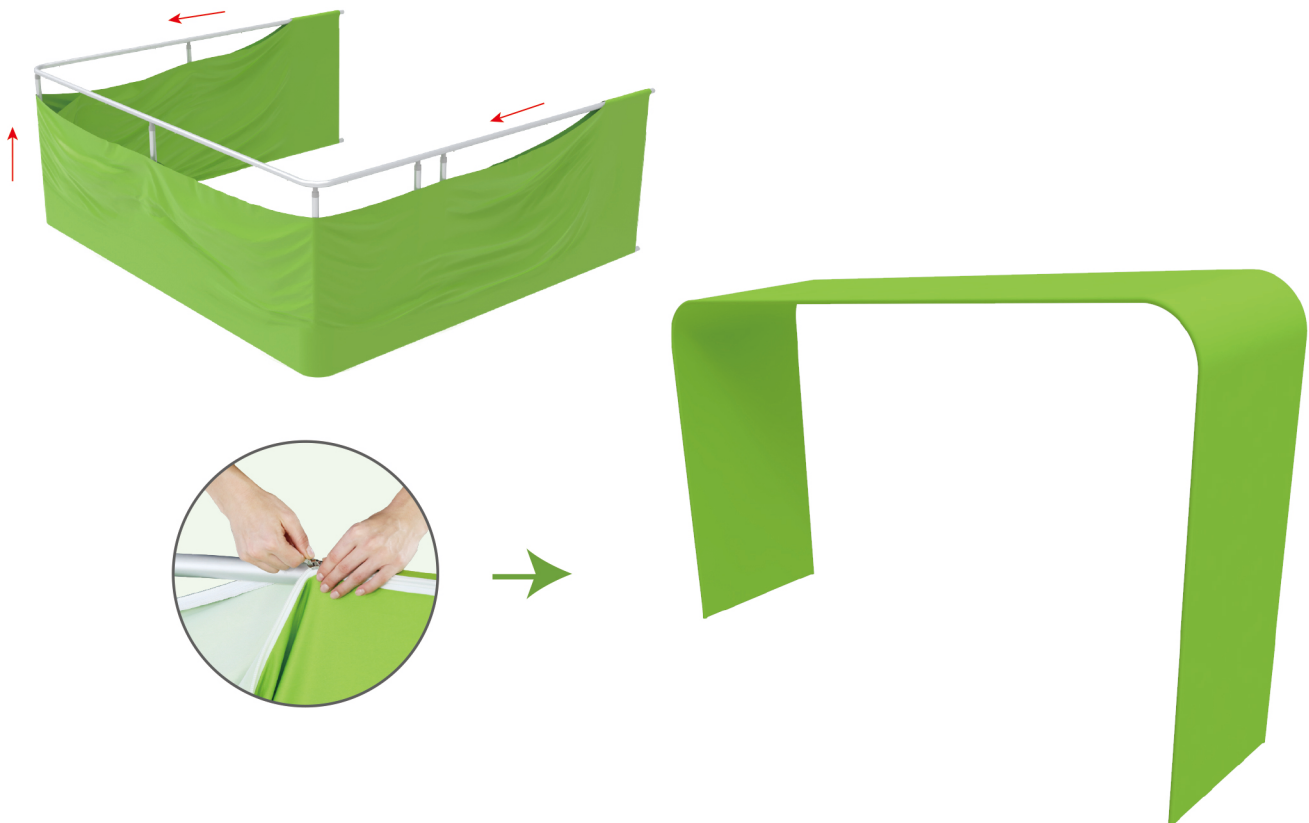


STEP 02

Connect long poles with corner poles according to labelings.



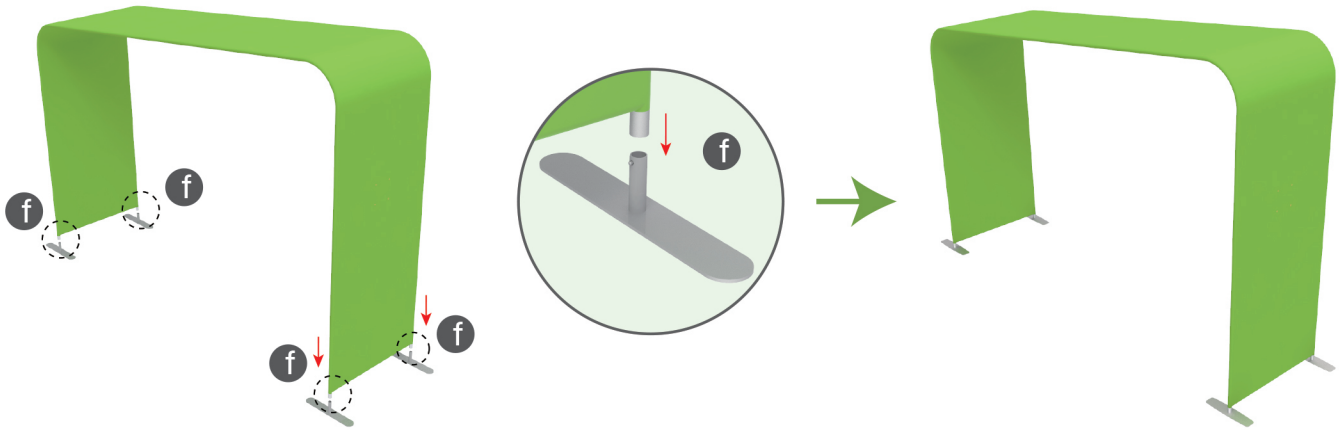
STEPS

STEP 03 Connect cross bars onto frame.**STEP 04** Slide fabric banner on frame from bottom and zip up at top.

STEPS

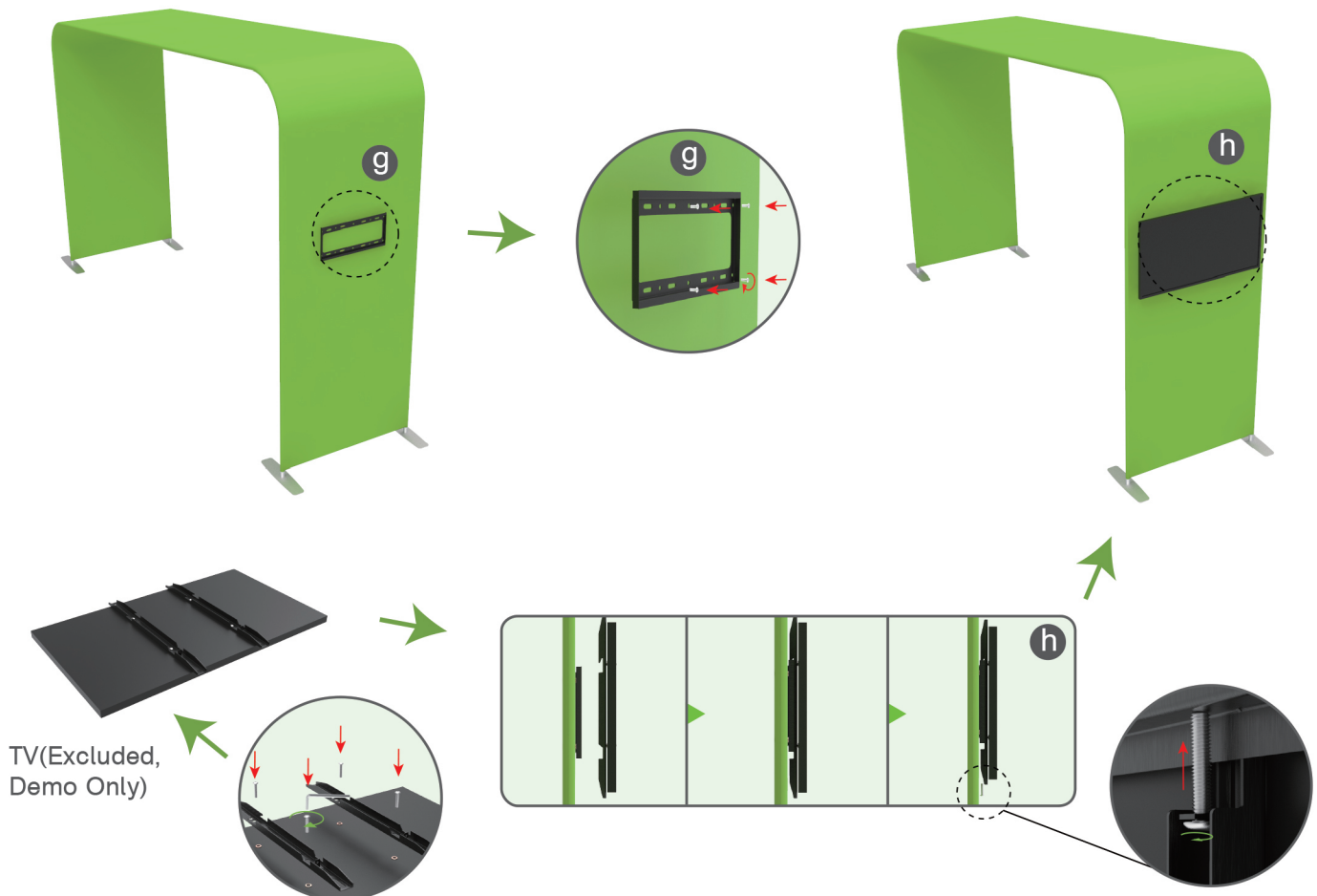
STEP 05

Insert display stands onto feet by pressing their knobs.



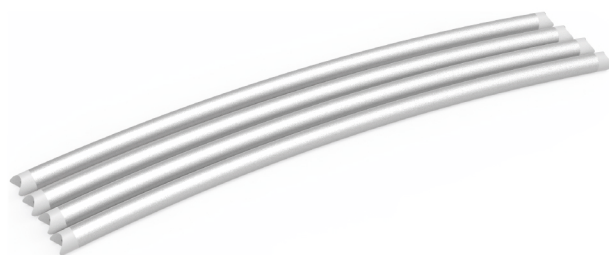
STEP 06

Screw TV mount with hex wrench.

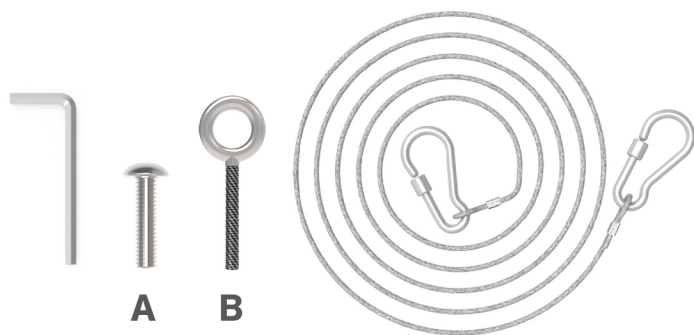


STEPS

(1) Hardware



(2) Screw A, Screw B, Wire with Hook

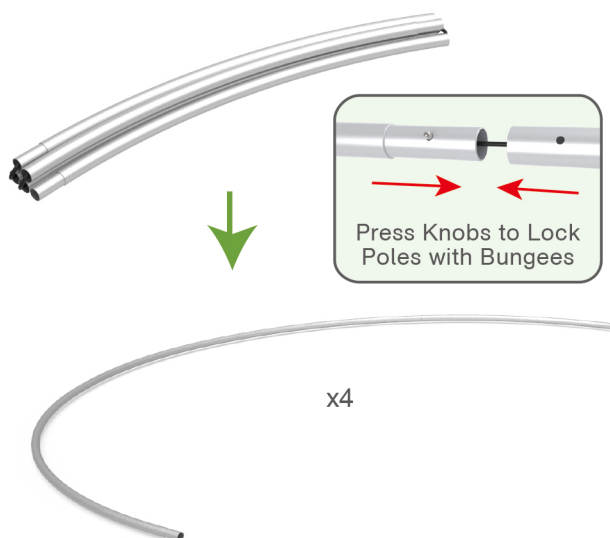


(3) Printed Graphic Fabric Banner (Optional)



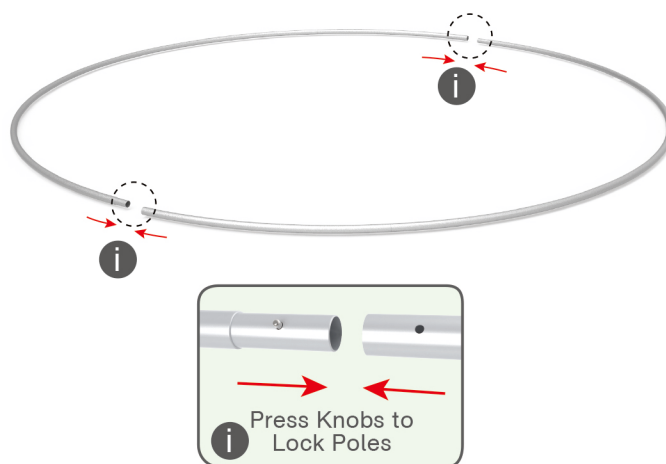
STEP 01

Connect to make long poles according to labelings.



STEP 02

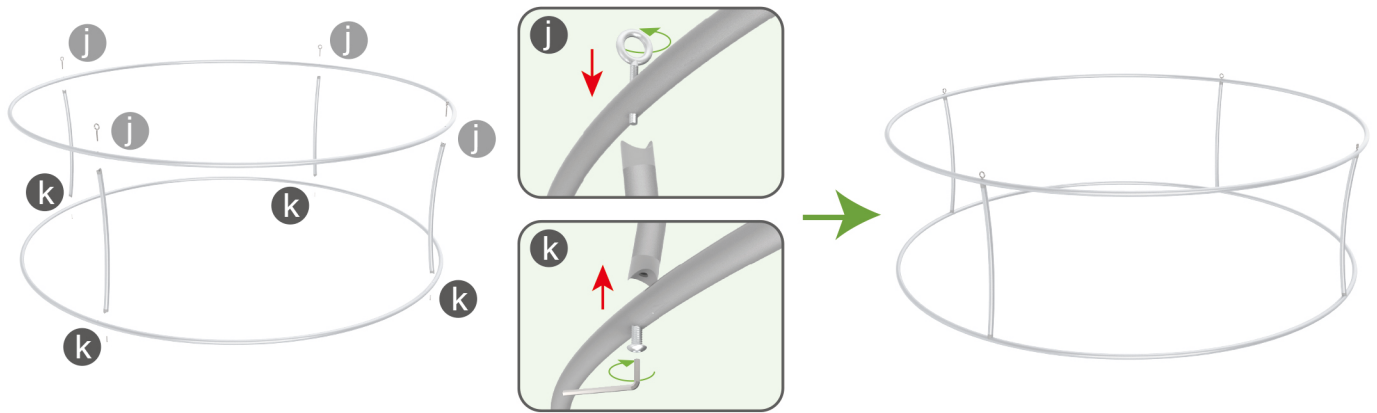
Connect long poles to make frame according to labelings.



STEPS

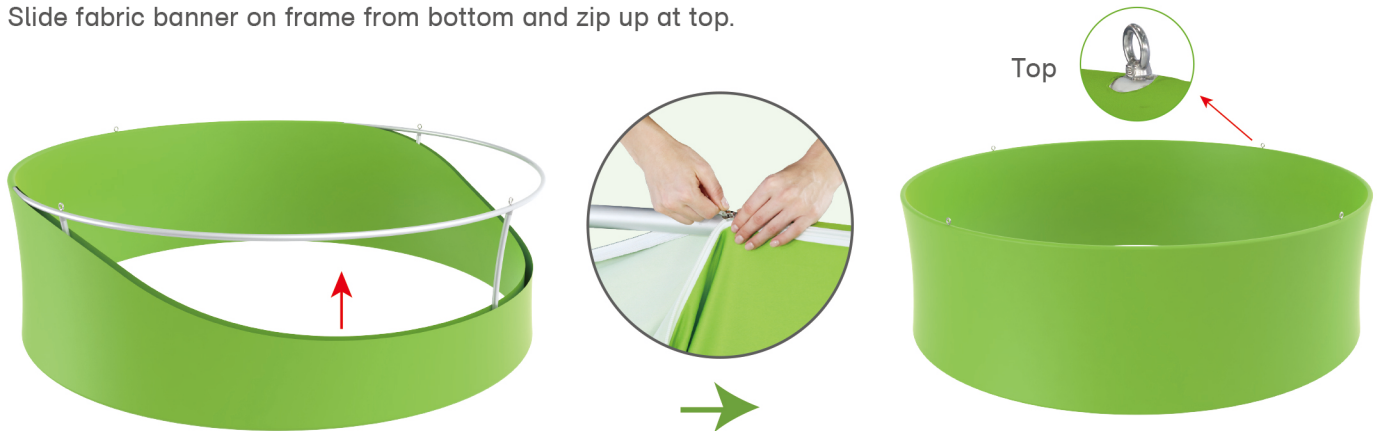
STEP 03

Connect support poles onto frame with screws B at top & screws A at bottom.



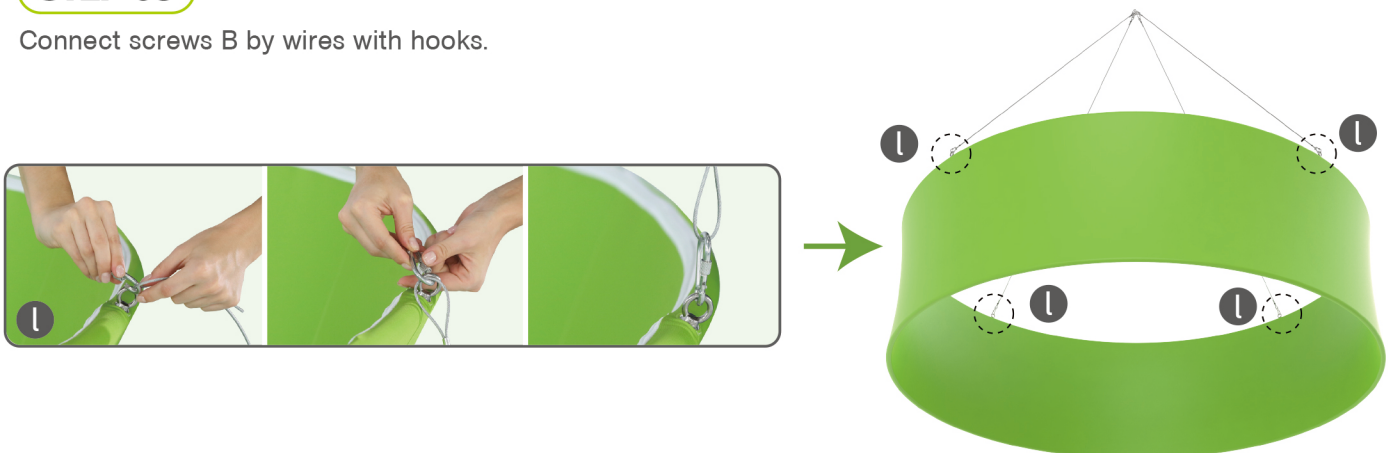
STEP 04

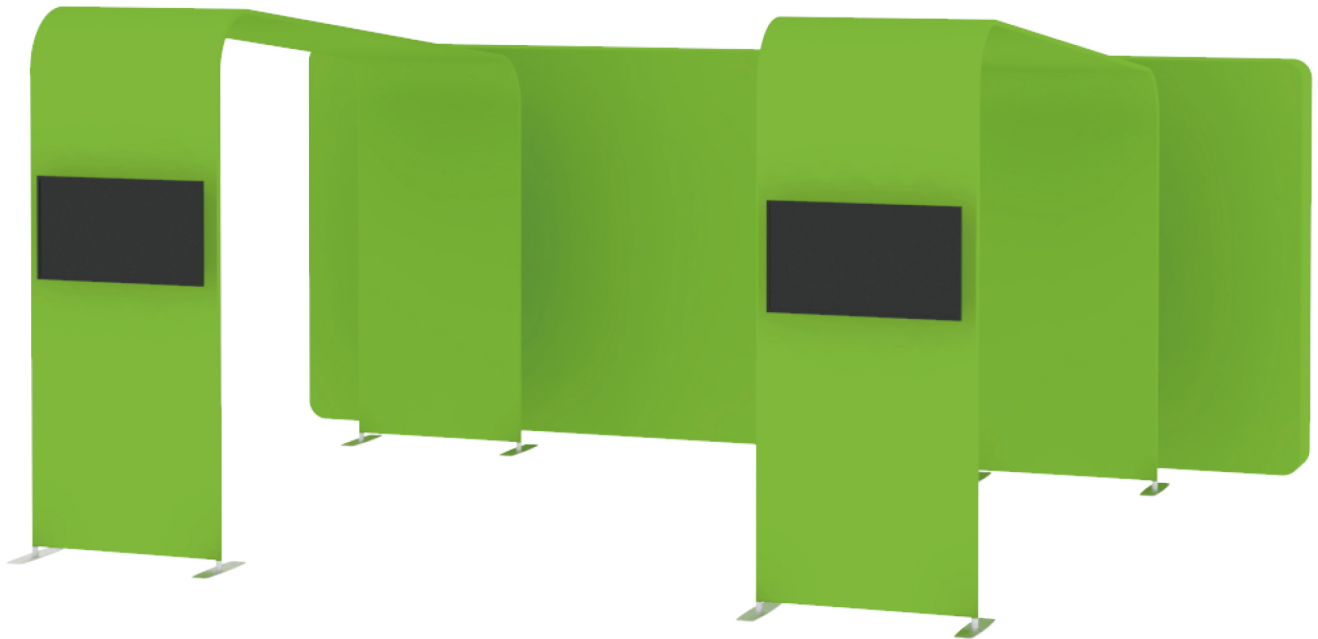
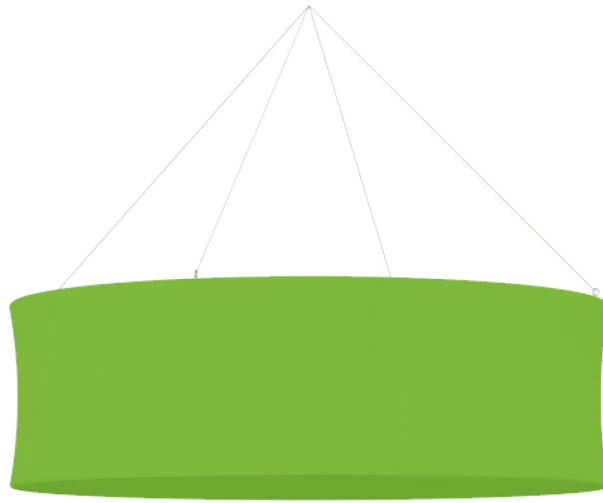
Slide fabric banner on frame from bottom and zip up at top.



STEP 05

Connect screws B by wires with hooks.



STEPS**20X20FT-BOOTH-B**