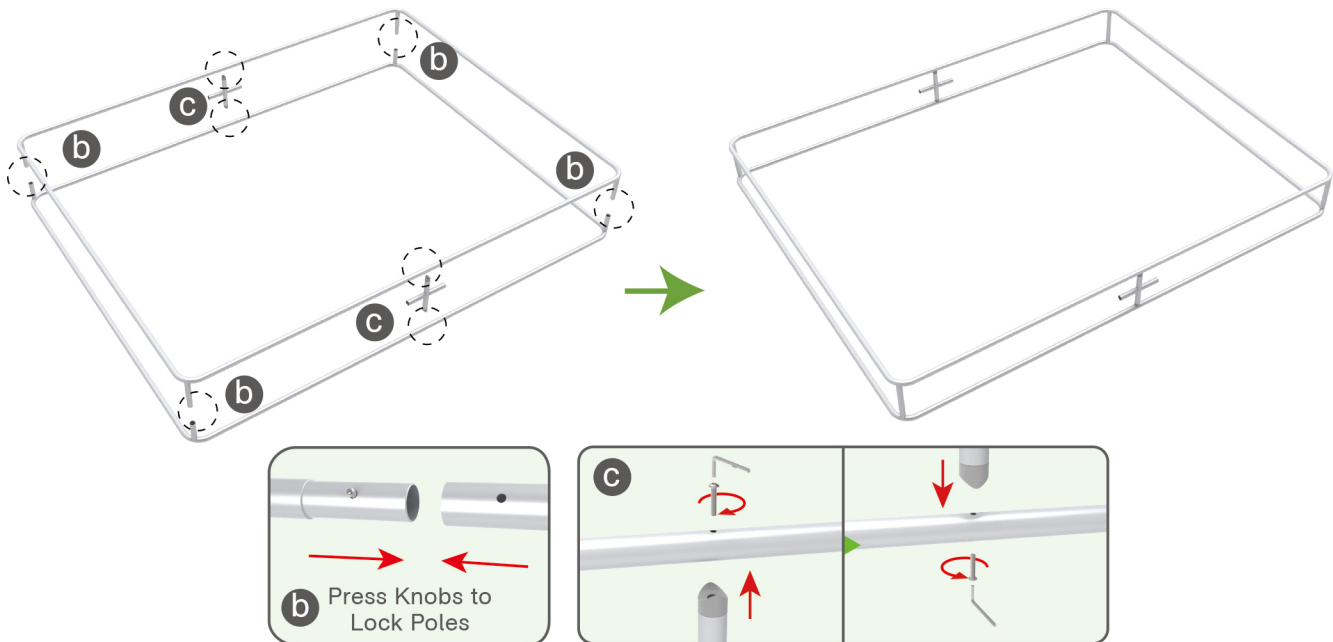
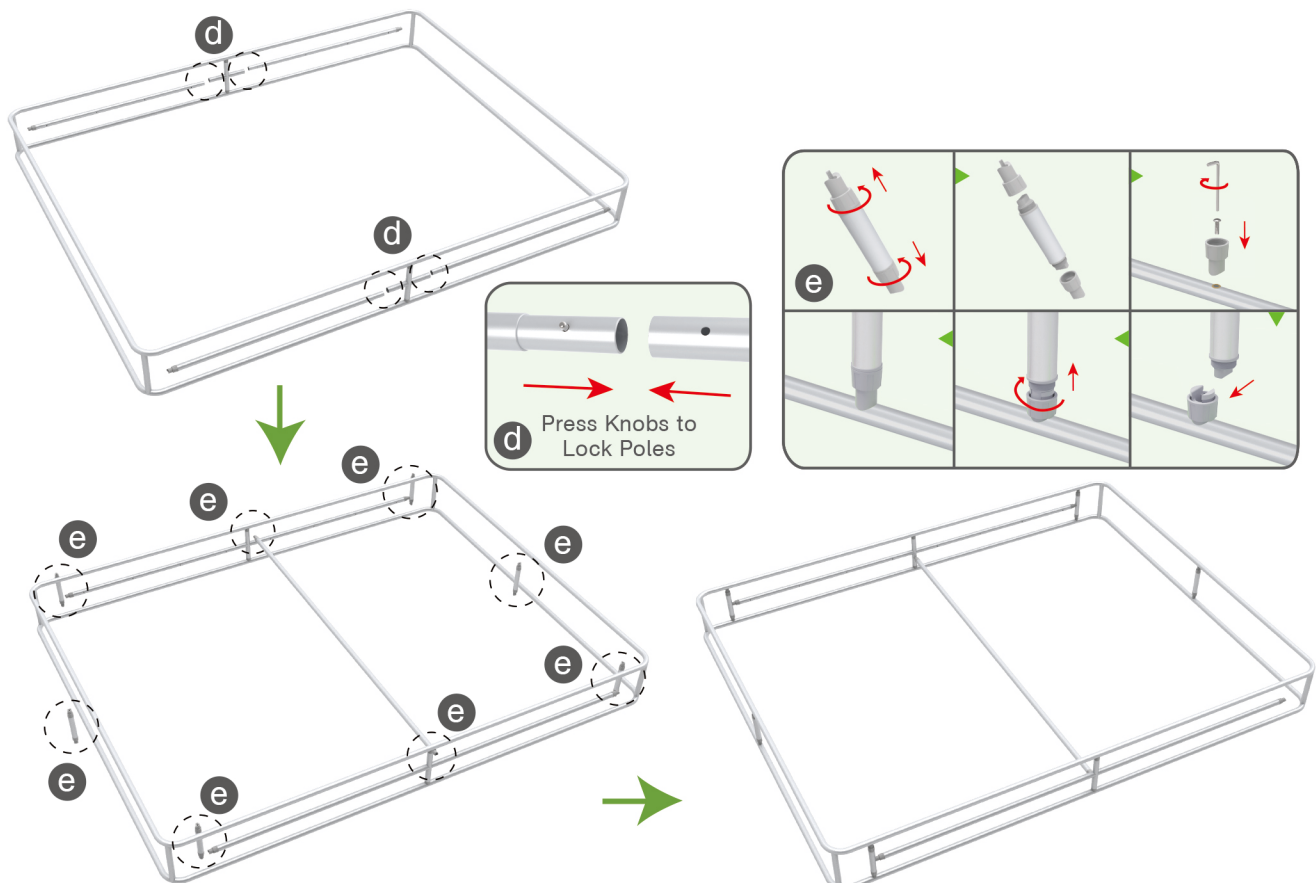


STEPS

STEP 03 Interconnect corner poles to make column frame according to labelings.

**STEP 04**

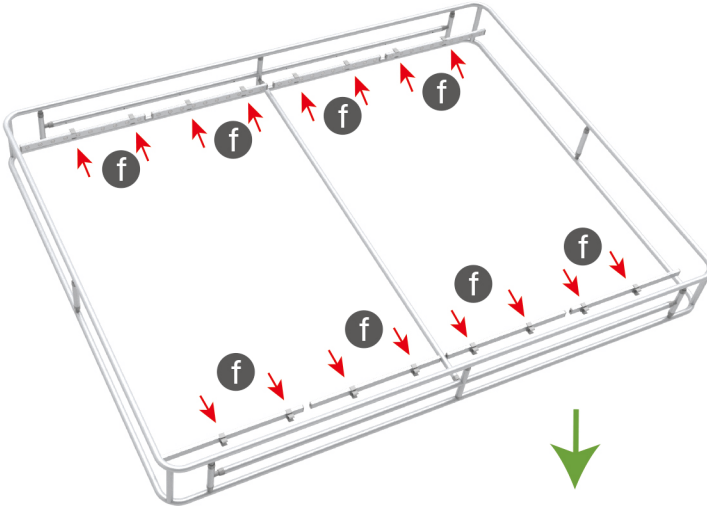
Connect long poles with corner poles according to labelings, connect support poles onto column frame.



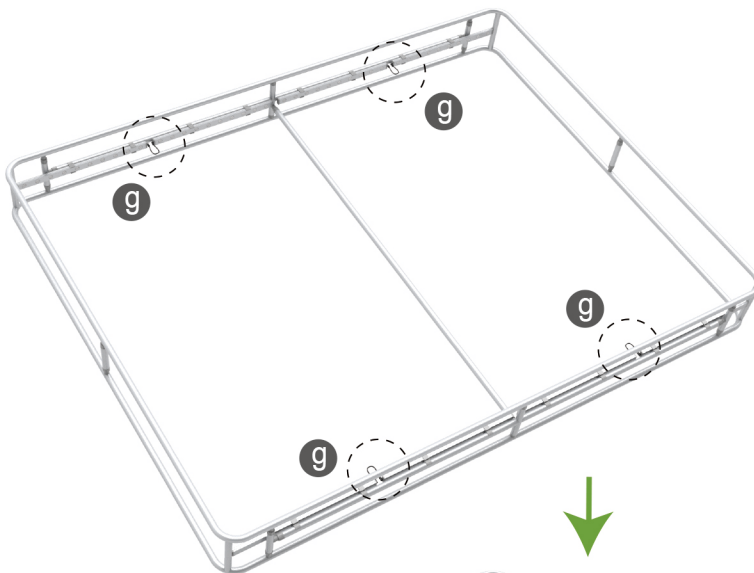
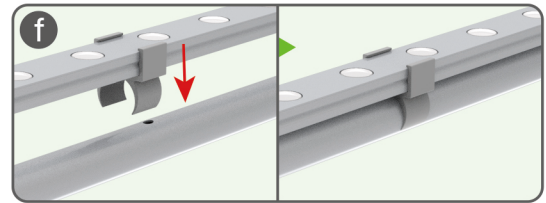
STEPS

STEP 05

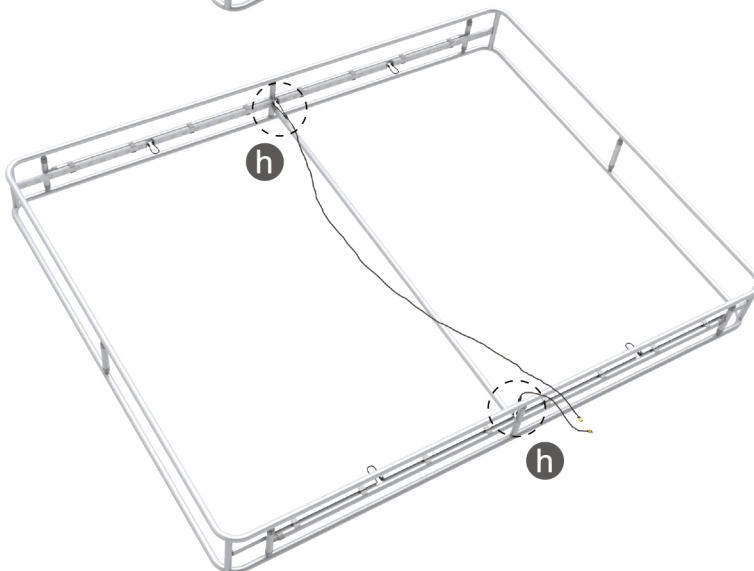
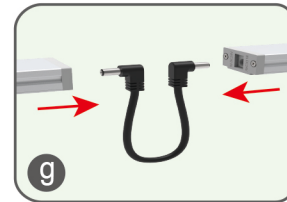
Install LED light bars & connect power wires.



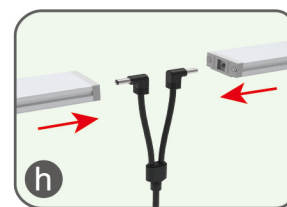
① Slide clips from LED light bars to align at holes of poles & press onto.



② Connect 2 adjacent LED light bars in series with DC connection wire.

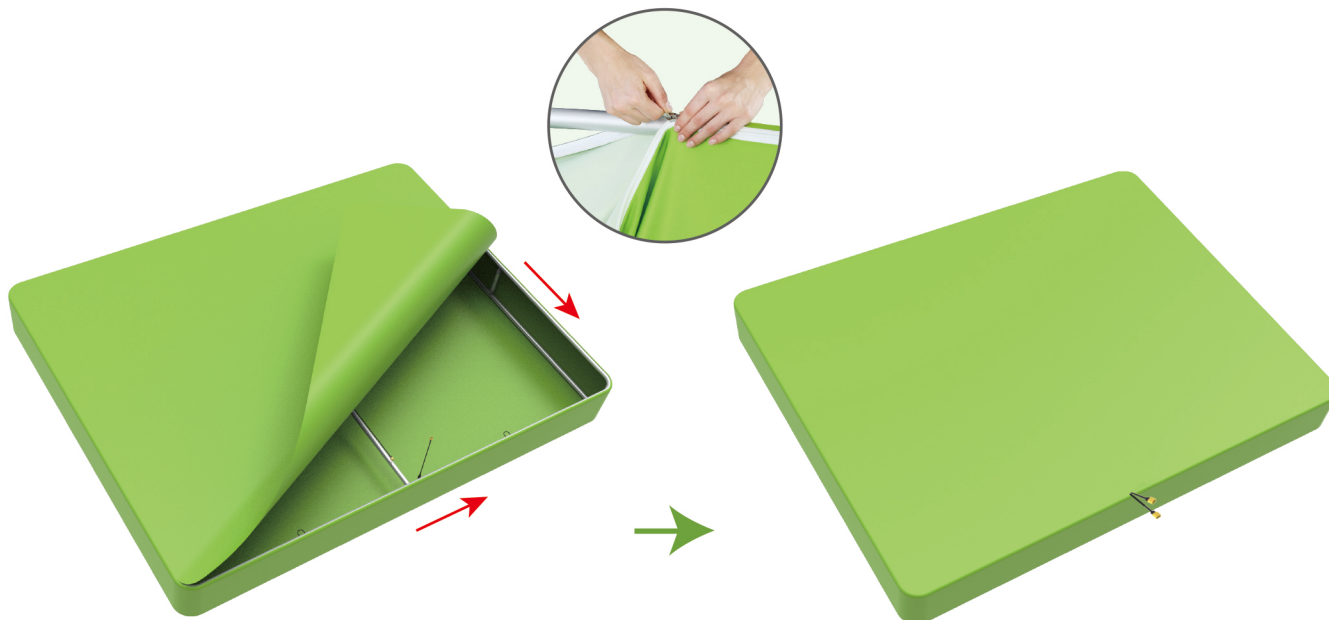


③ Connect those 2 adjacent LED light bars connected with Y-shaped connection wire, slightly adjust space between each LED light bar from 1" to 4".



STEPS

STEP 06 Wrap column frame with fabric banner & zip up at corner.



STEP 07

Connect Y-shaped connection wire's XT60 connector to switching power supply.

