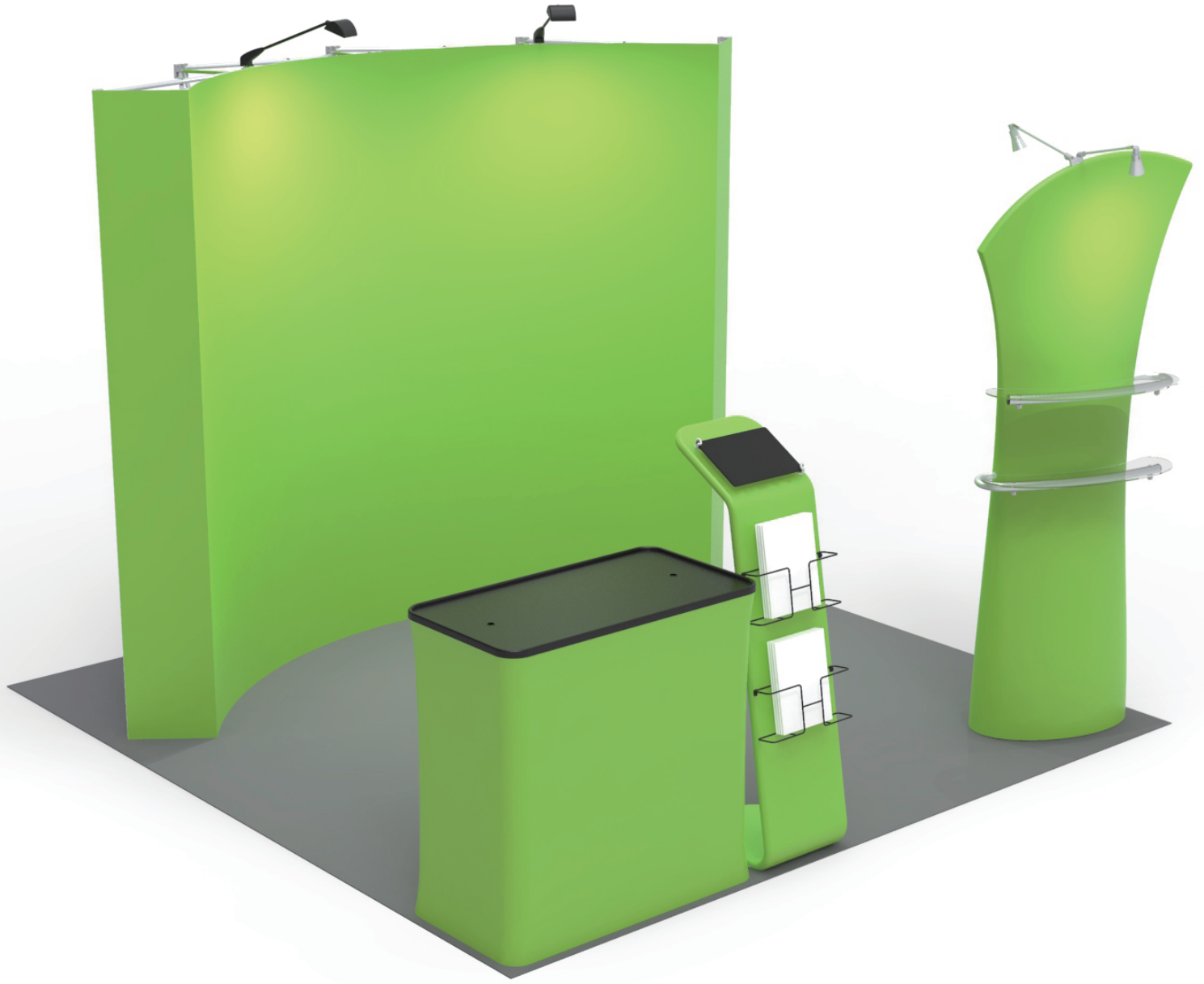


INSTRUCTION



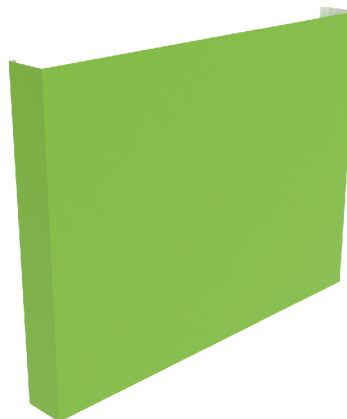
TF-SB-10X10-30

STEPS

(1) Hardware



(2) Fabric banner

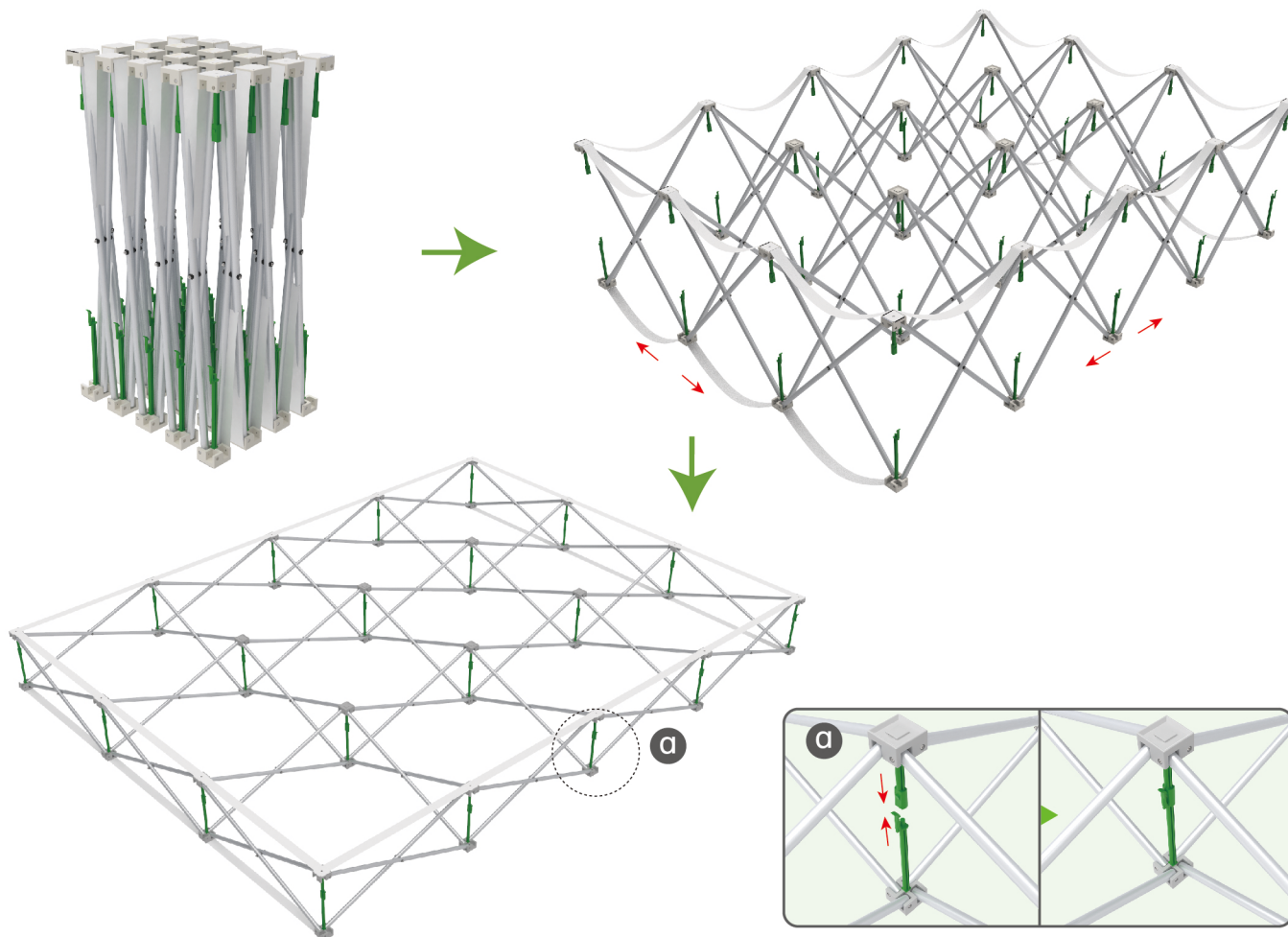


STEP 01

Expand the frame from diagonal to shape. To align the green locking pieces up & down and clip together.

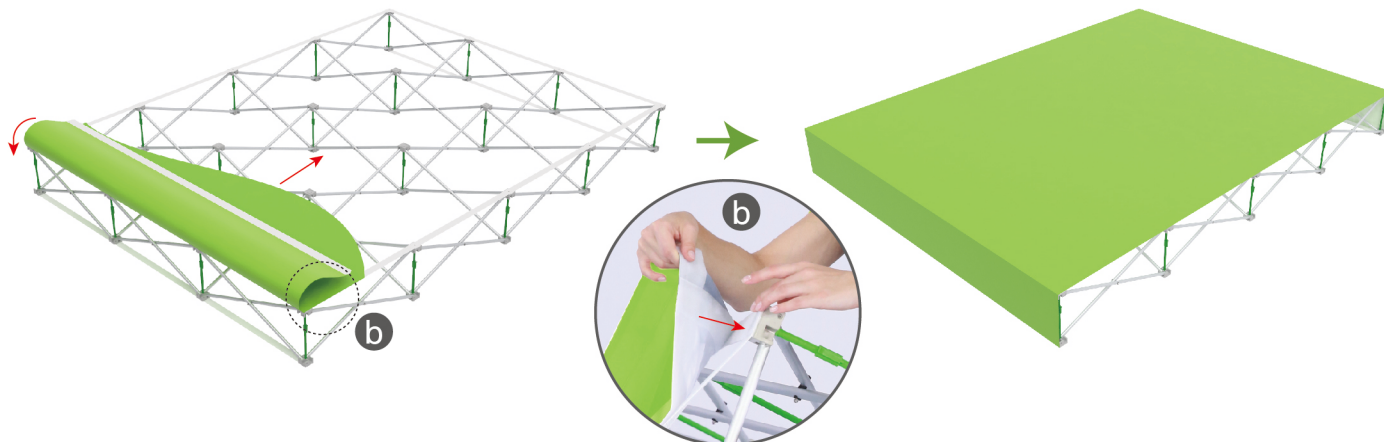
PLEASE NOTE

Make sure to loosen all green locking pieces before folding up pop up frame.



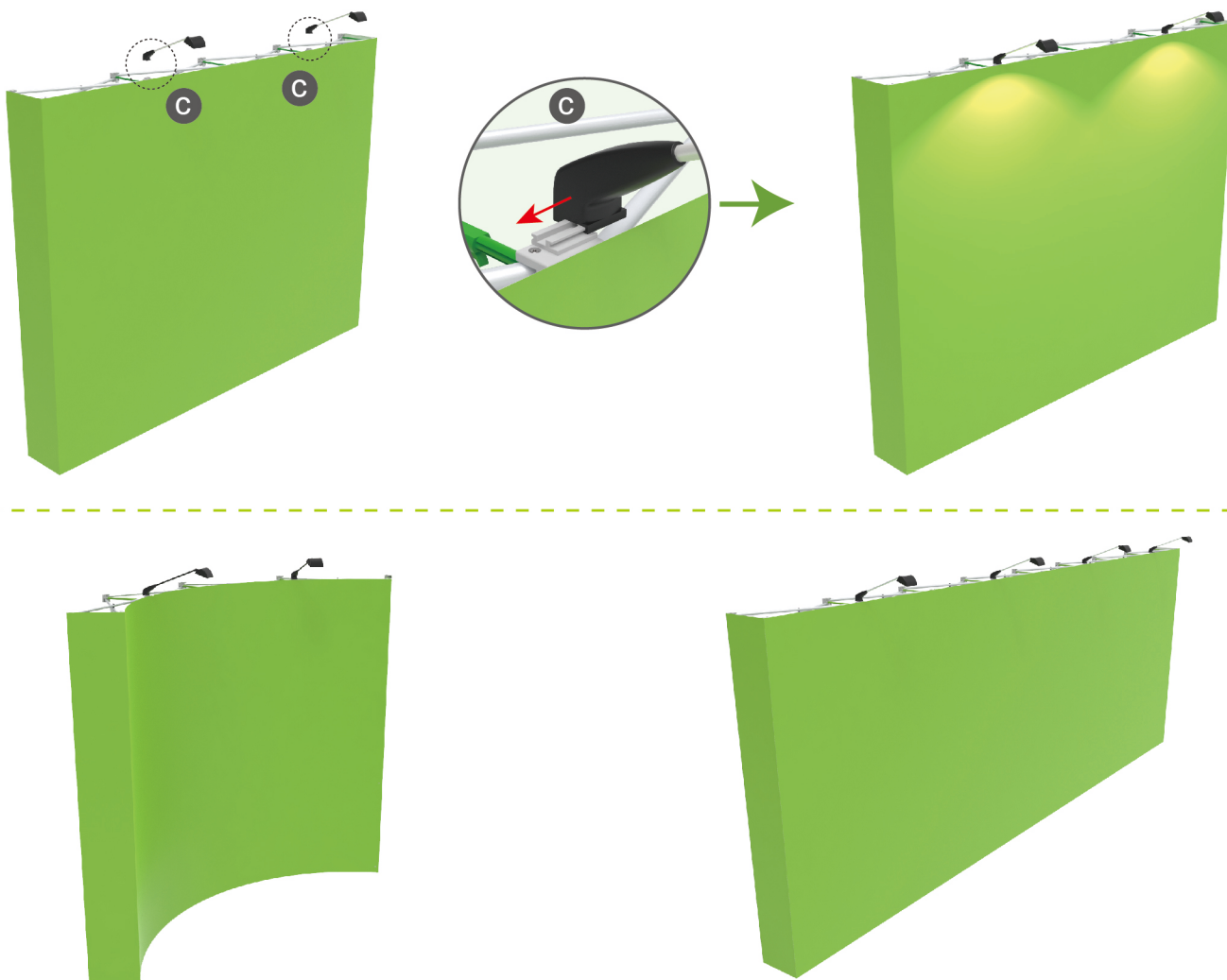
STEPS

STEP 02 To attach the fabric banner from side to side and then attach the end caps.



STEP 03 To slide the LED light at top of frame in position
(2 of the plastic pieces at top are with slots for the lights)

LED Lights are optional



STEPS

(1) Durable Plastic Hard Case, Aluminum Support Poles

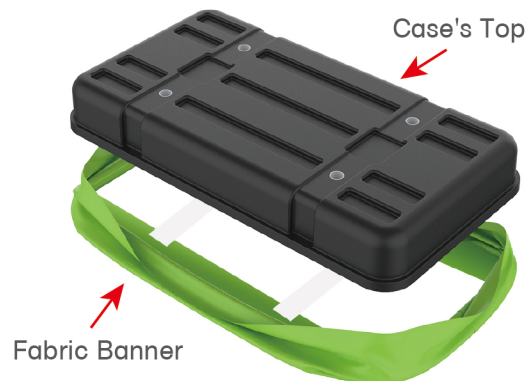


(2) Printed Graphic Fabric Banner



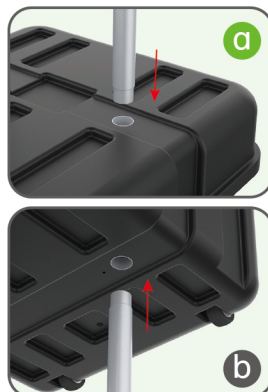
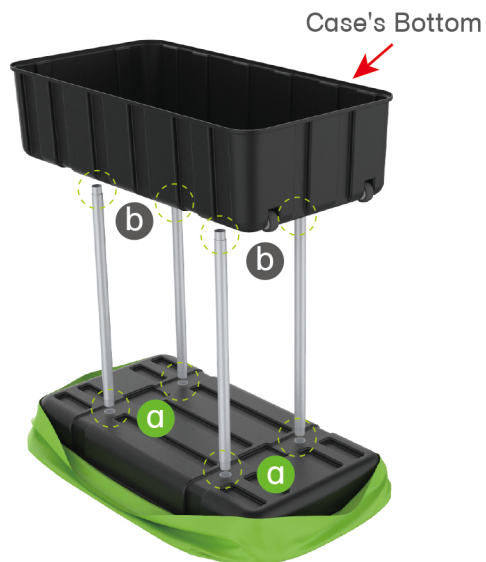
STEP 01

Put hard case's top into fabric banner.



STEP 02

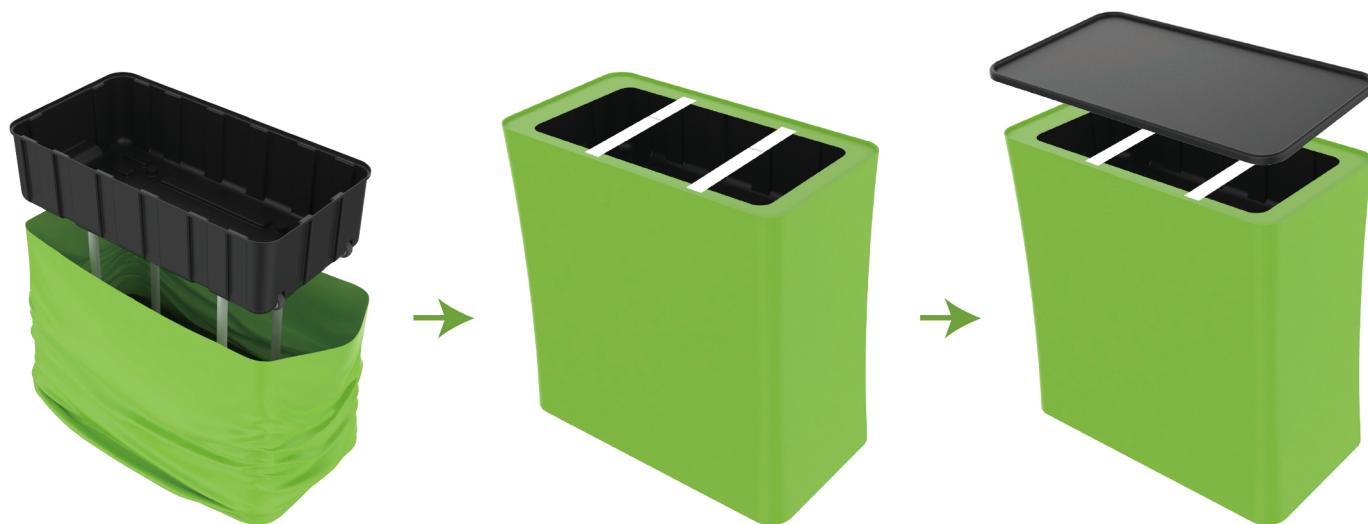
Insert support poles into hard case's top & bottom.



STEPS

STEP 04

Wrap fabric banner from bottom to top & twist it to be smooth, lay hard case's intermediate panel on podium's top.



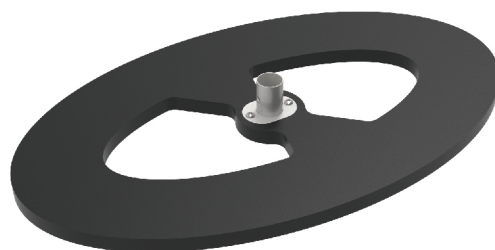
★ One Tool (Hex Wrench) 

STEPS

(1) Aluminum pole



(2) MDF panel



(3) Fabric banner

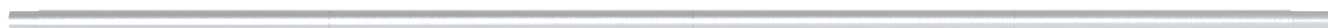
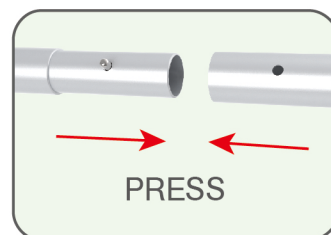
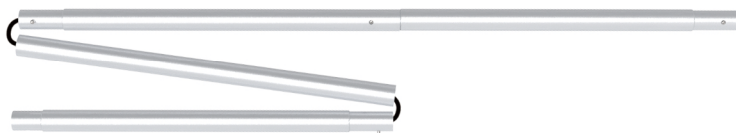


(4) Optional Accessory



STEP 01

To assemble the poles according to labelling



STEPS

STEP 02

To put the bottom MDF panel upside down and clip the fabric banner to the slot

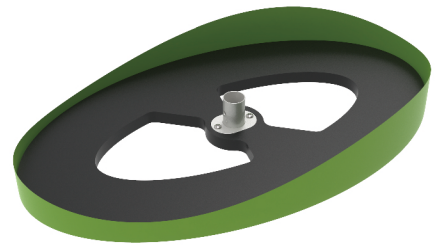
To put the middle of fabric bottom into the middle of bottom panel slot and start the assembly



BOTTOM

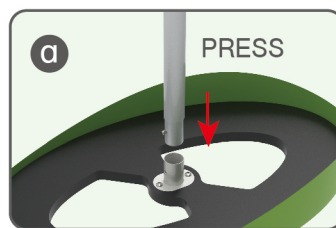


PRESS



STEP 03

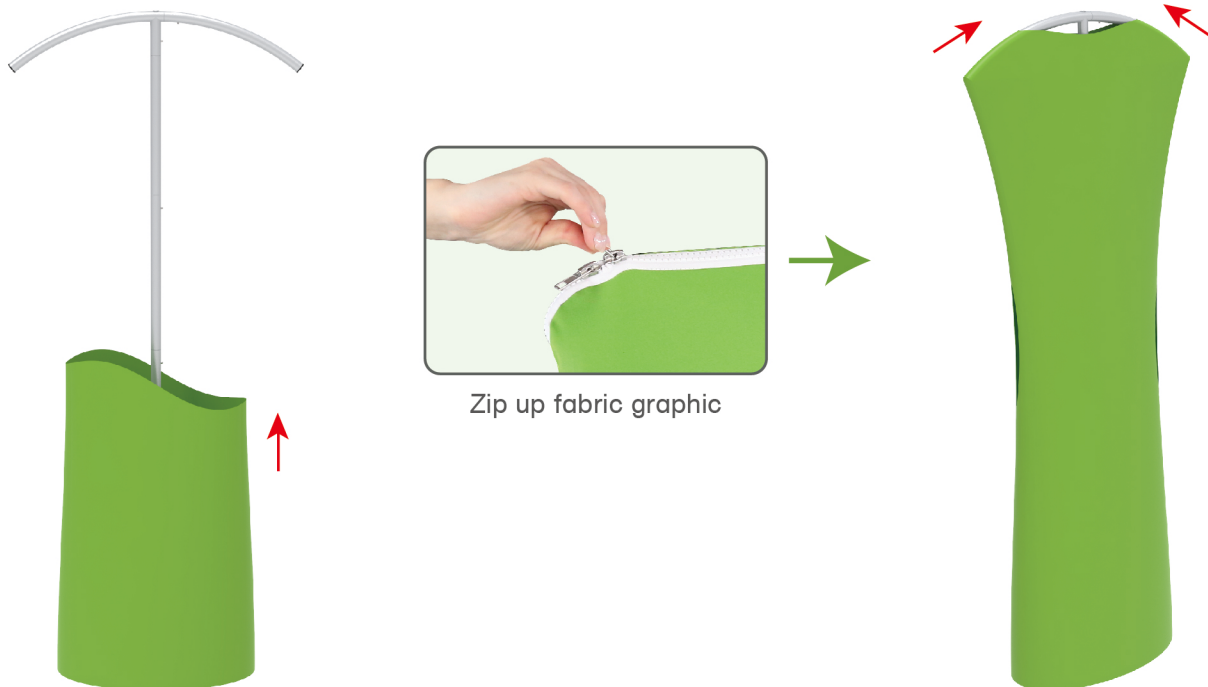
Insert the center pole into the base.



STEPS

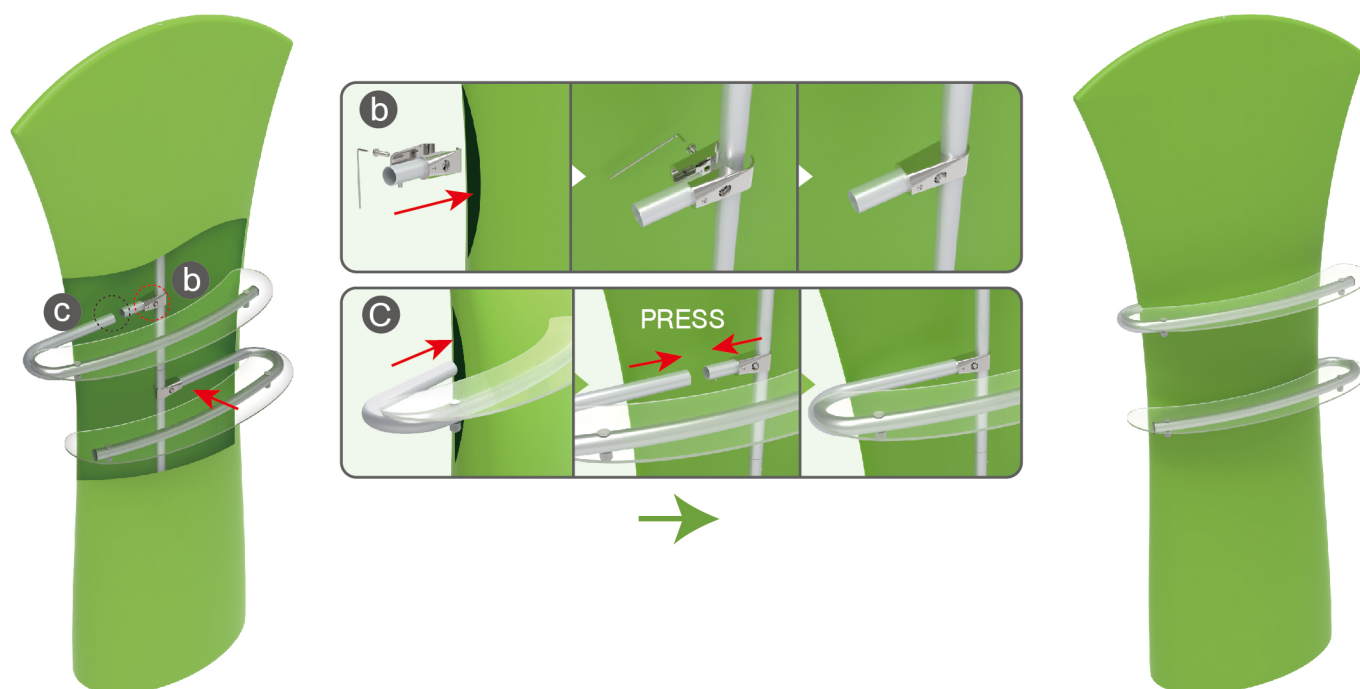
STEP 04

Stretch the cloth cover upward and put it into the top bracket. Pull the zipper on both sides to the middle to expose the hole of the LED light on the top of the bracket



STEP 05

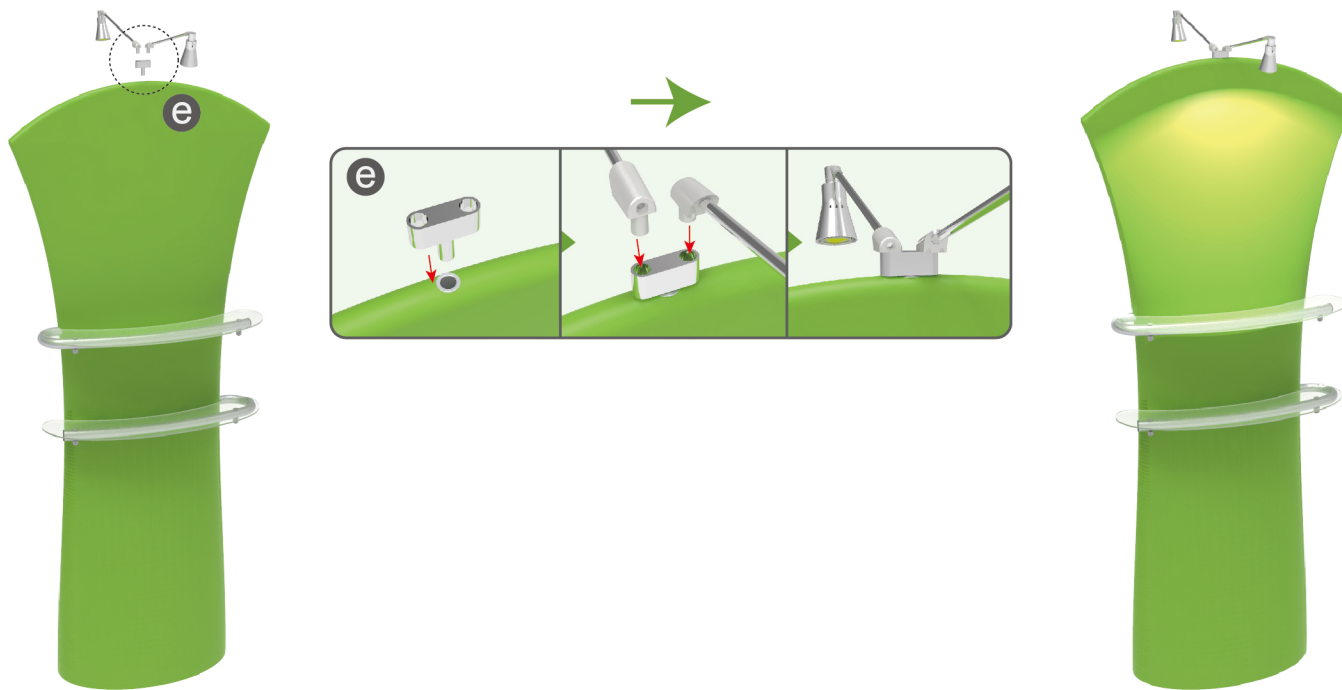
Slide the shelves through the open slits in the graphic and connect them to their support sockets.



STEPS

STEP 06

Place the base of the light fitting in the hole in the middle of the profile.



DT-W-01



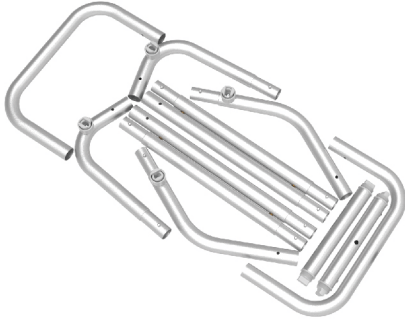
DT-W-02



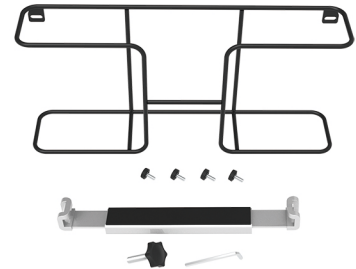
DT-W-03

★ One Tool (Hex Wrench) **STEPS**

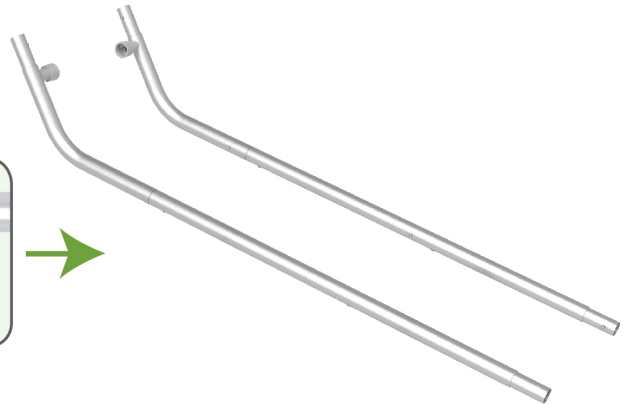
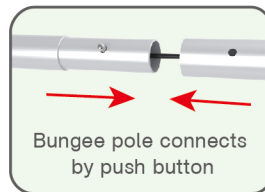
(1) Snap Tubes



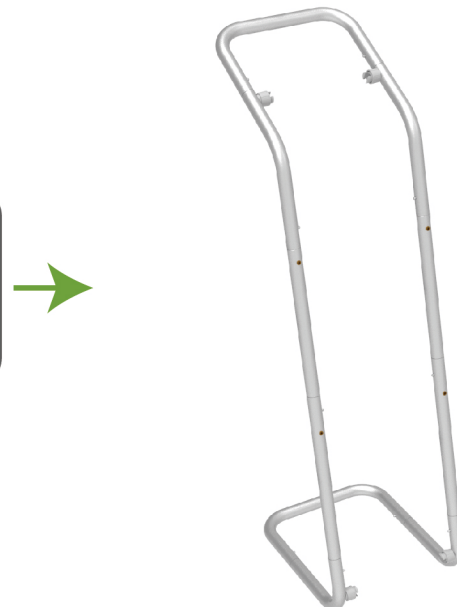
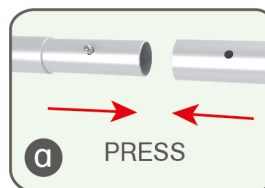
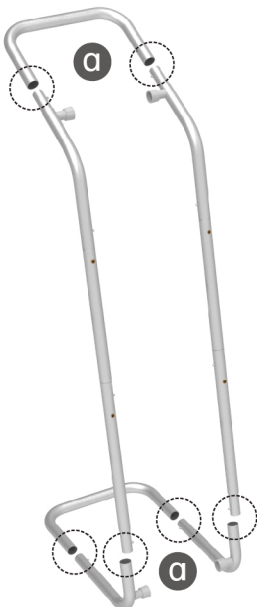
(2) Printed fabric banner

(3) Brochure rack x 2 / Screws x 4
Tablet PC holder x1**STEP 01**

To Connect the tubes according to the labellings

**STEP 02**

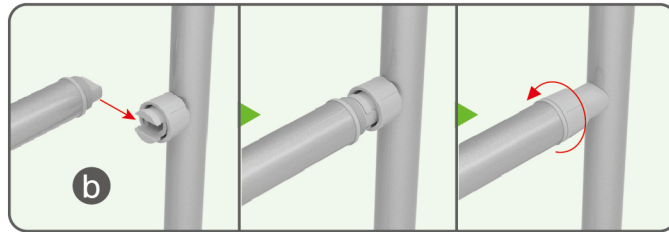
To connect 2 long side tubes by the corner pieces



STEPS

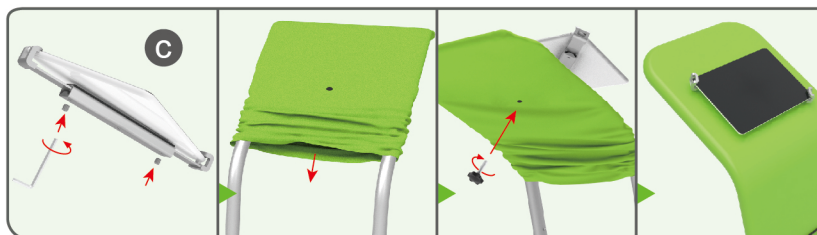
STEP 03

To install the cross bar according to labellings



STEP 04

To wrap the fabric from top to the middle of frame, then put the iPad in the holder and adjust the holder to right size and lock it by Allen Key Afterwards, install the set to the display stand.



STEPS

STEP 05

To pull the fabric banner to bottom and zip up.



STEP 06

To Install 2 racks by screws in position

