

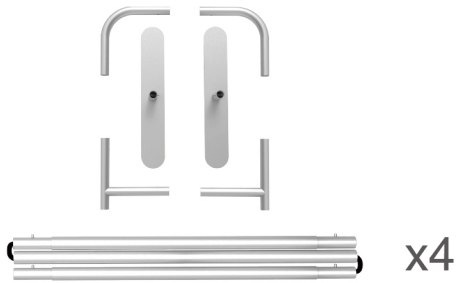
# INSTRUCTION



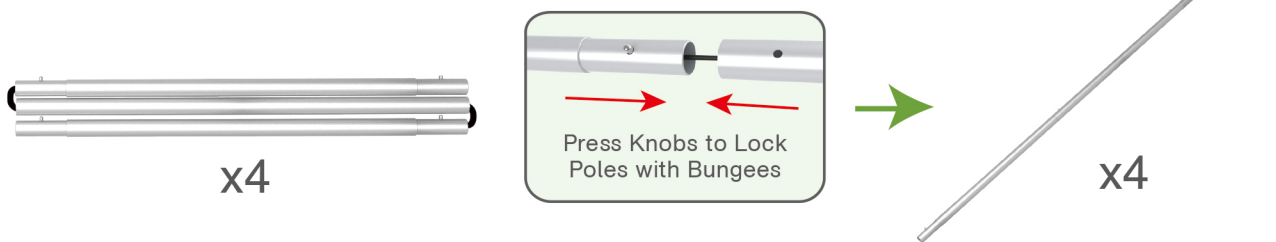
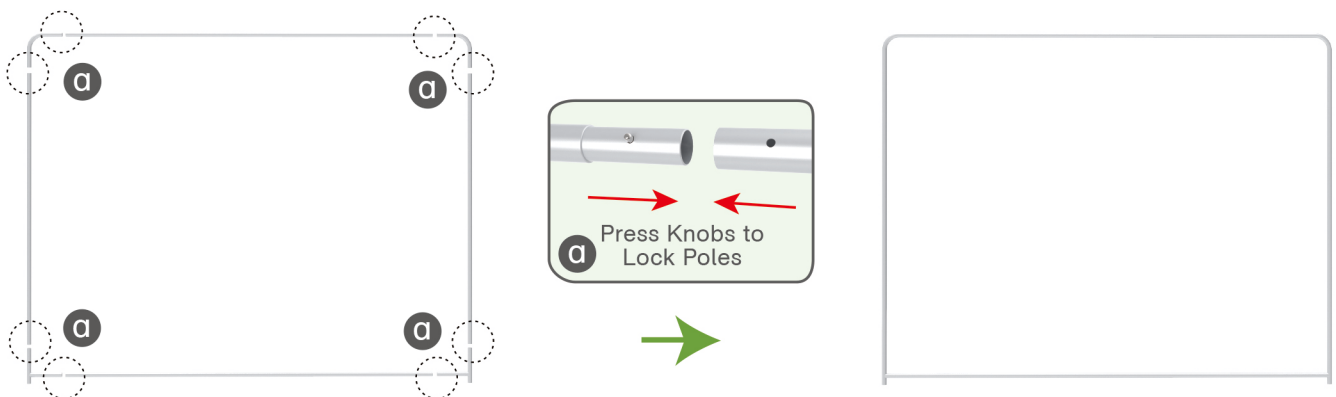
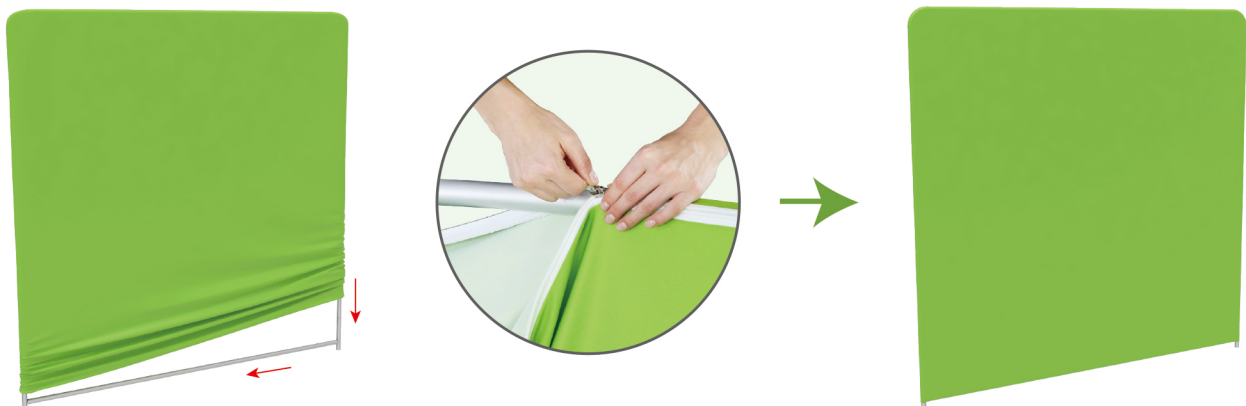
**10X10FT-BOOTH-M**

## STEPS

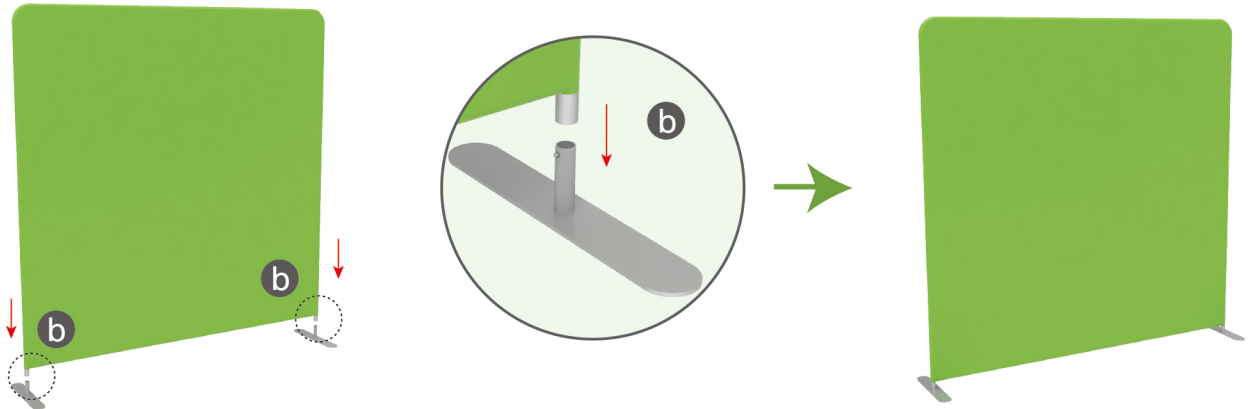
(1) Hardware



(2) Printed Graphic Fabric Banner (Optional)

**STEP 01** Connect to make long poles according to labelings.**STEP 02** Connect long poles with corner poles according to labelings.**STEP 03** Slide fabric banner on frame from top and zip up at bottom.

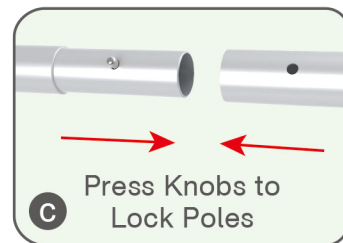
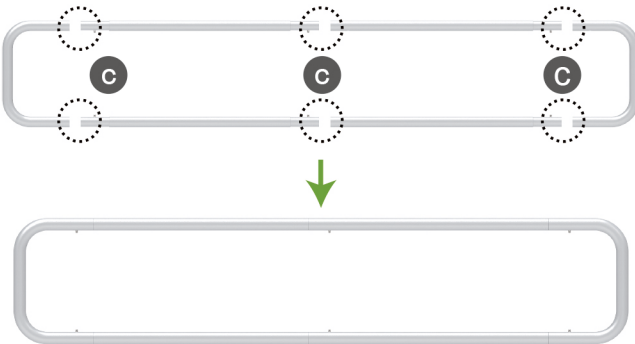
## STEPS

**STEP 04** To assemble the stand feet in position

(1) Hardware

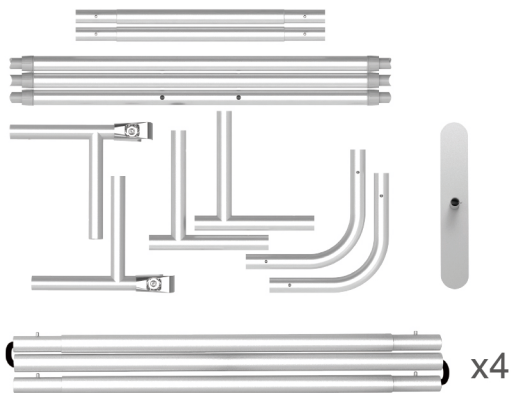


(2) Printed Graphic Fabric Banner (Optional)

**STEP 01** Connect poles according to labelings.**STEP 02** Slide fabric banner on frame from left and zip up at right.

## STEPS

(1) Hardware

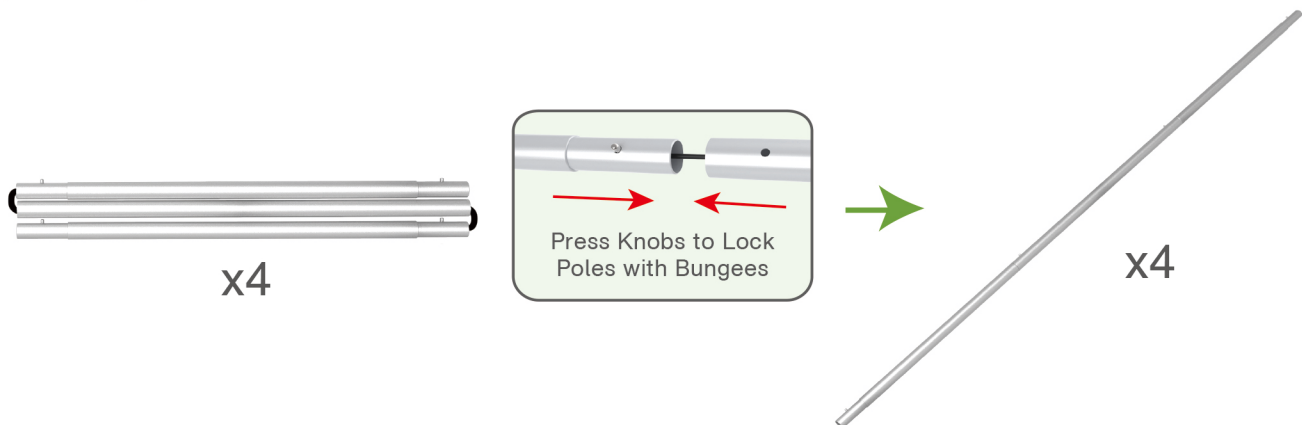


(2) Printed Graphic Fabric Banner (Optional)



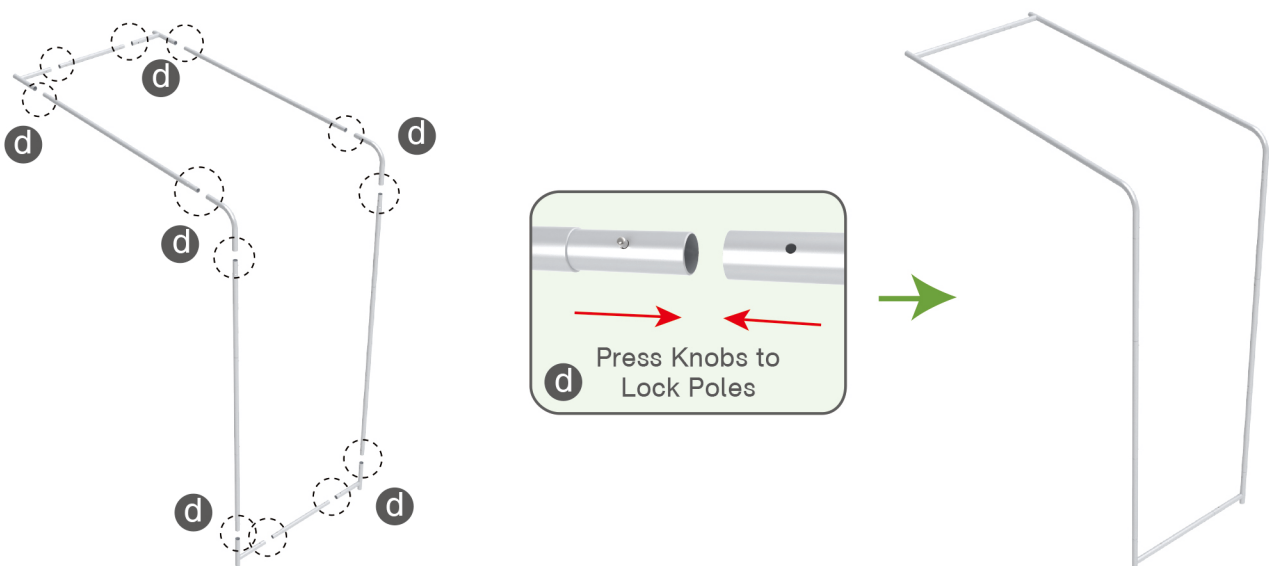
## STEP 01

Connect to make long poles according to labelings.



## STEP 02

Connect long poles with corner poles according to labelings.

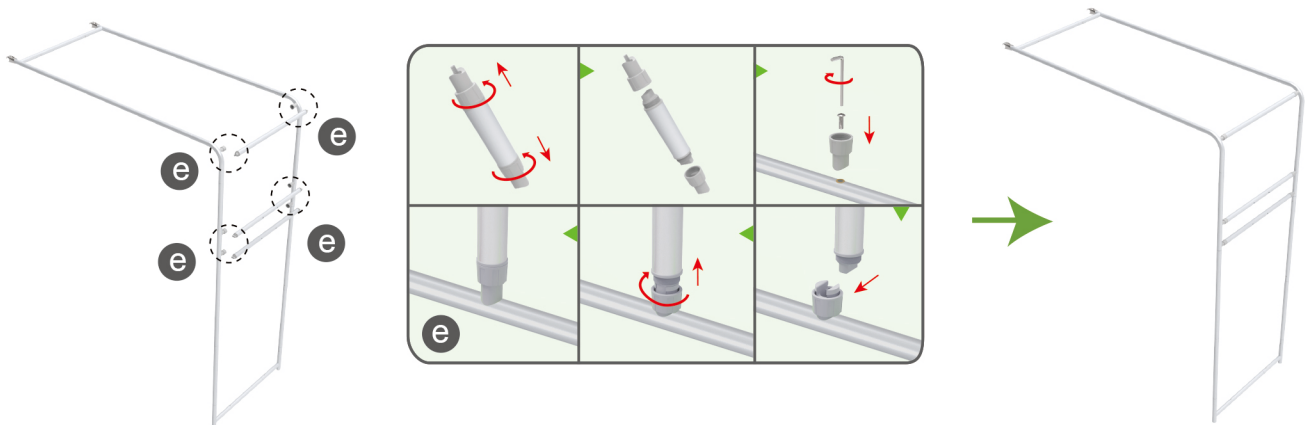




## STEPS

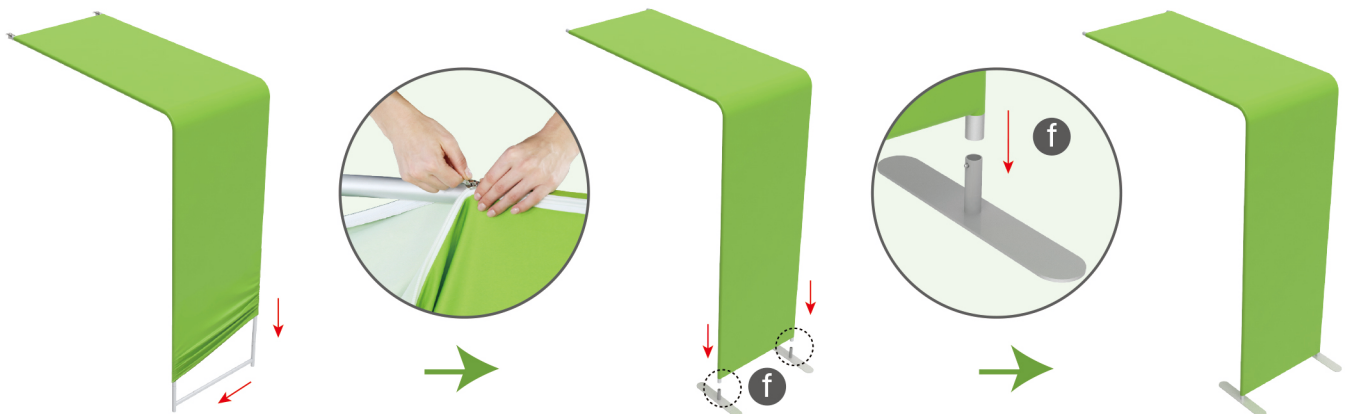
## STEP 03

Connect support poles onto frame.



## STEP 04

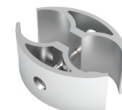
Slide fabric banner on frame from top and zip up at bottom, insert display stands onto feet by pressing their knobs.



## Booth Set Assembly

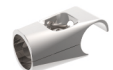


(1) 180° C-Shaped Clip



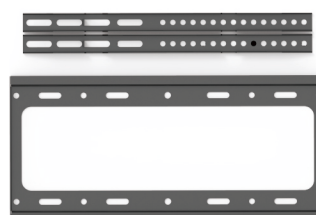
x2

(2) Arm Clip



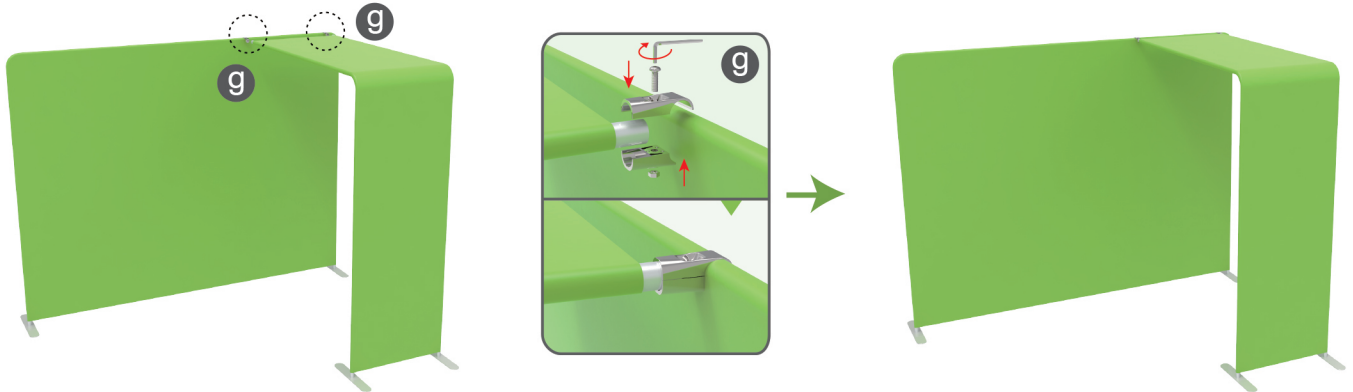
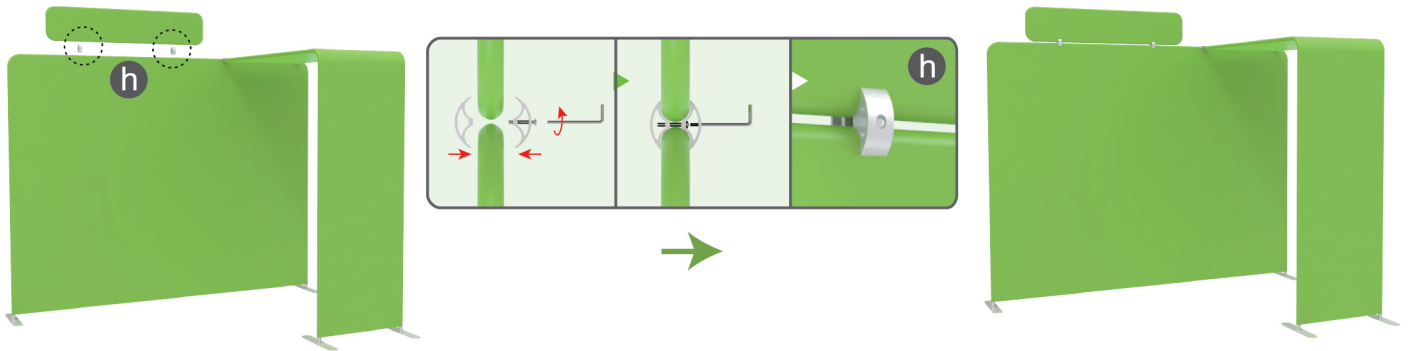
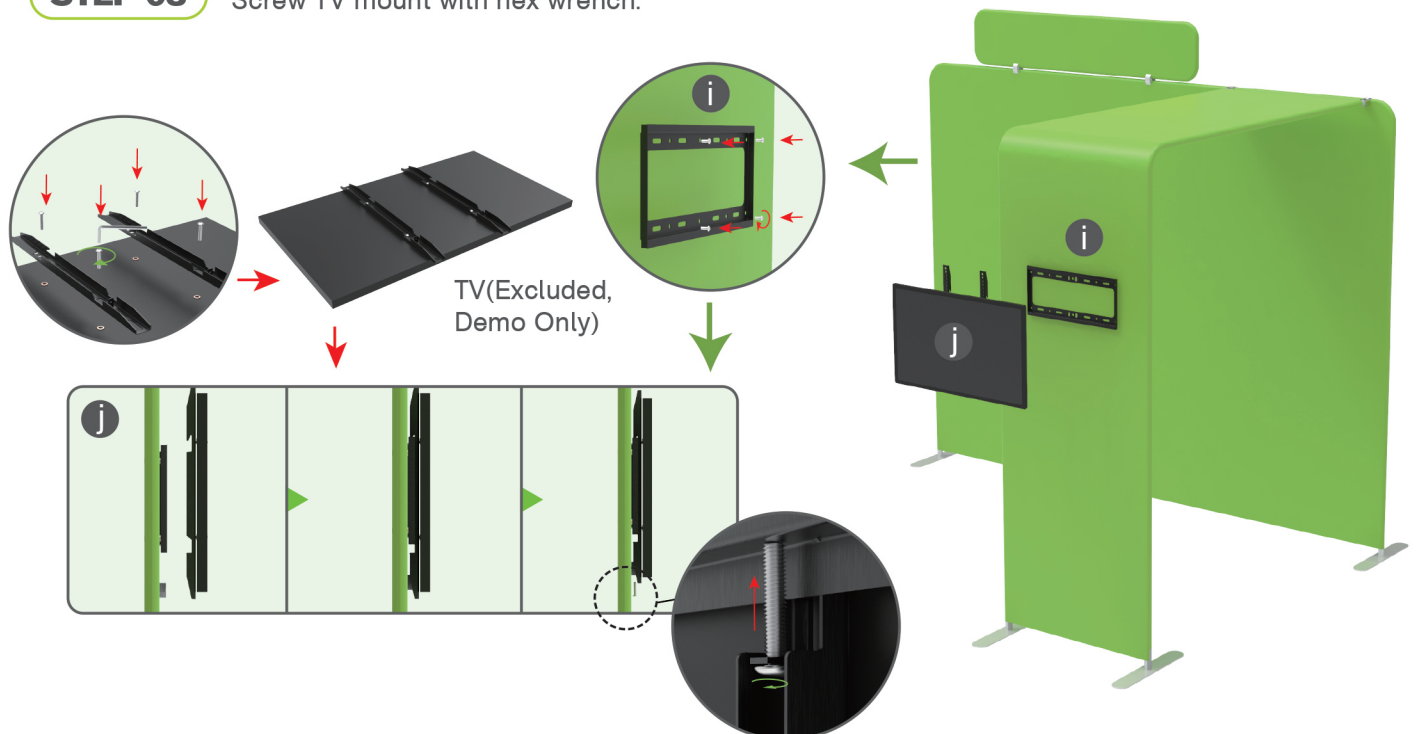
x2

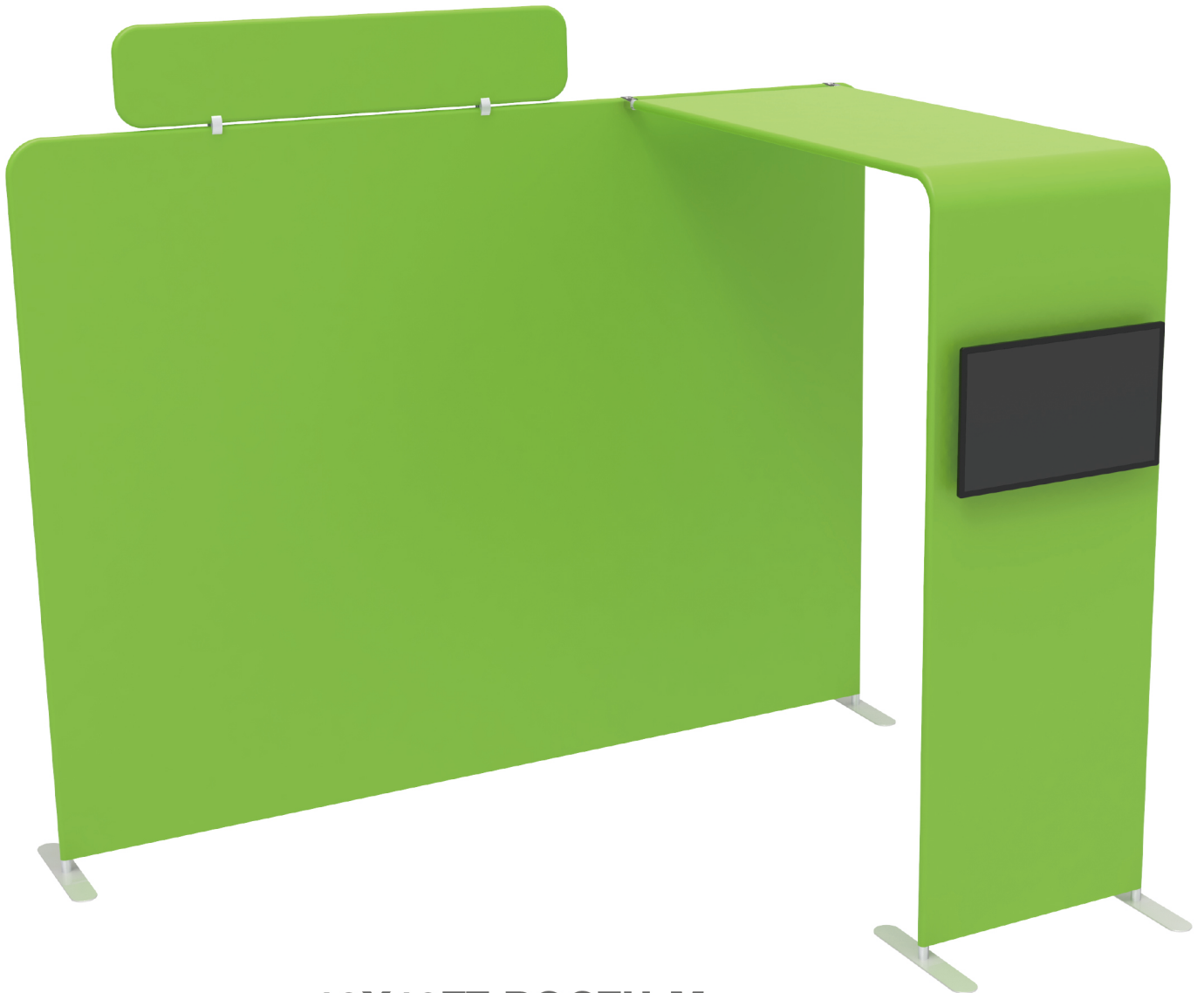
(3) TV Mount & Screw



A

## STEPS

**STEP 01** Connect display stands with arm clips.**STEP 02** Interconnect display stands with C-shaped clips.**STEP 03** Screw TV mount with hex wrench.

**STEPS****10X10FT-BOOTH-M**

## STEPS

(1) Durable Plastic Hard Case, Aluminum Support Poles

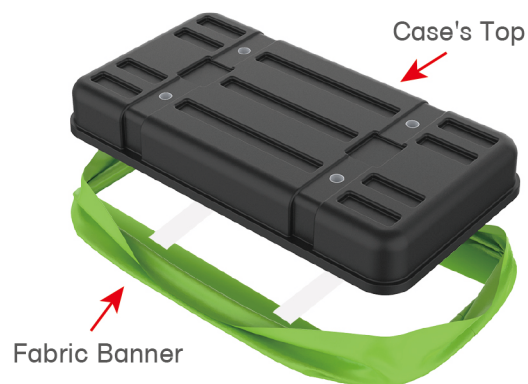


(2) Printed Graphic Fabric Banner



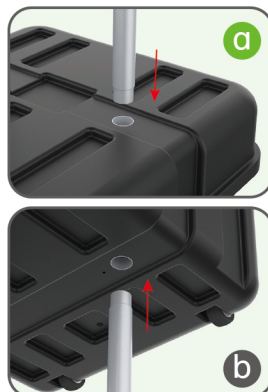
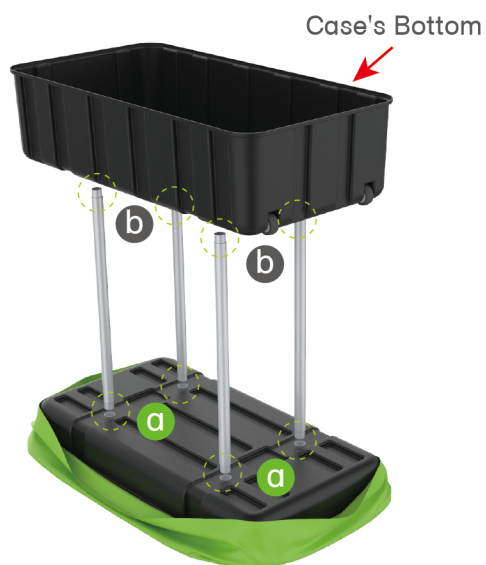
## STEP 01

Put hard case's top into fabric banner.



## STEP 02

Insert support poles into hard case's top &amp; bottom.

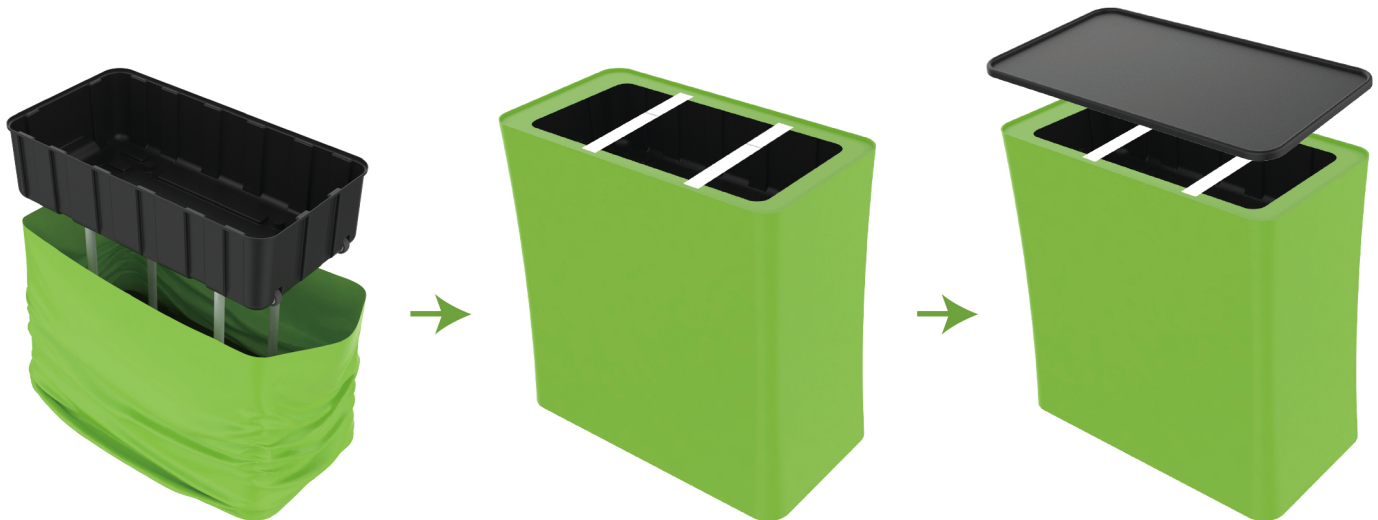




## STEPS

## STEP 04

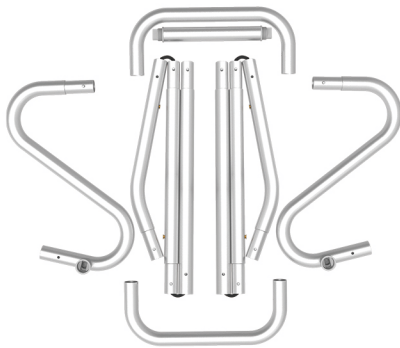
Wrap fabric banner from bottom to top & twist it to be smooth, lay hard case's intermediate panel on podium's top.



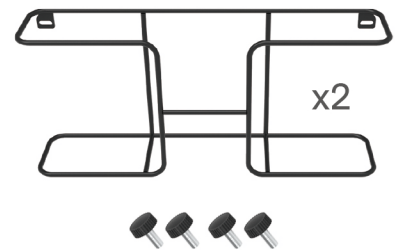


## STEPS

(1) Snap Tubes

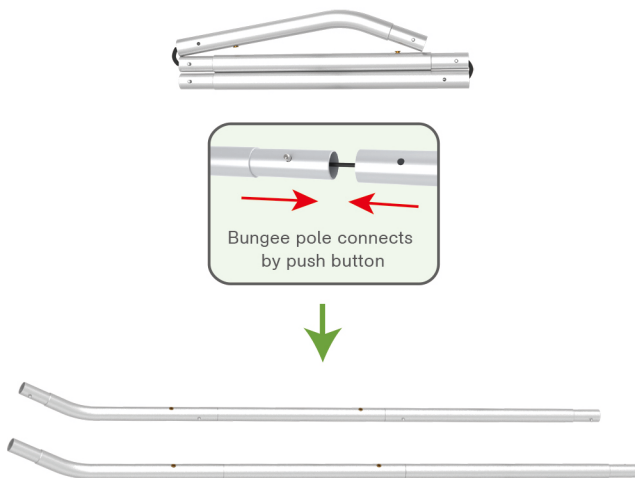


(2) Printed fabric banner

(3) Brochure rack x 2  
Screws x 4

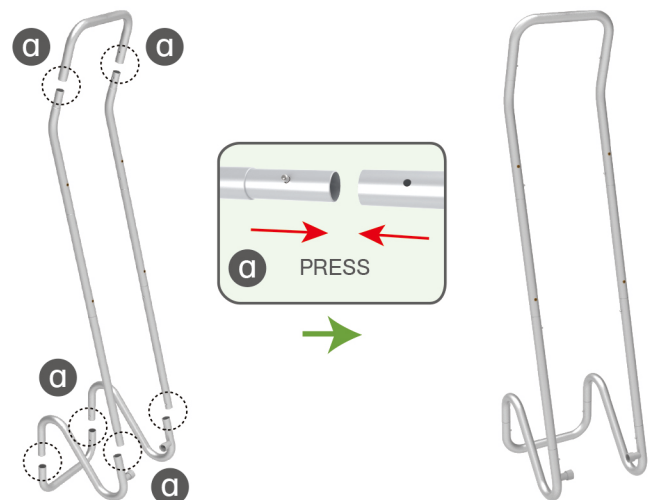
## STEP 01

To Connect the tubes according to the labellings

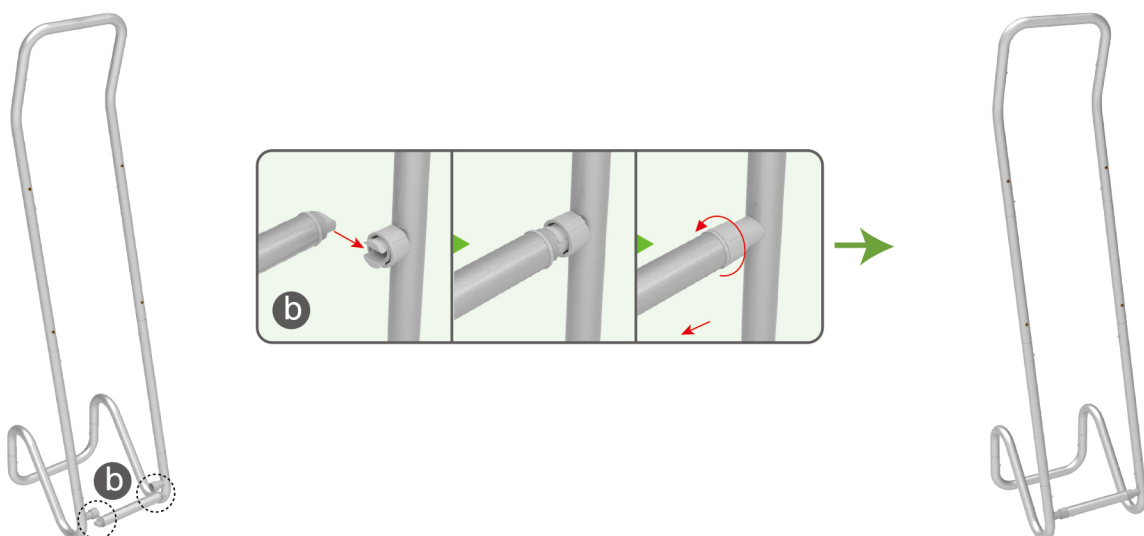


## STEP 02

To connect 2 long side tubes by the corner pieces



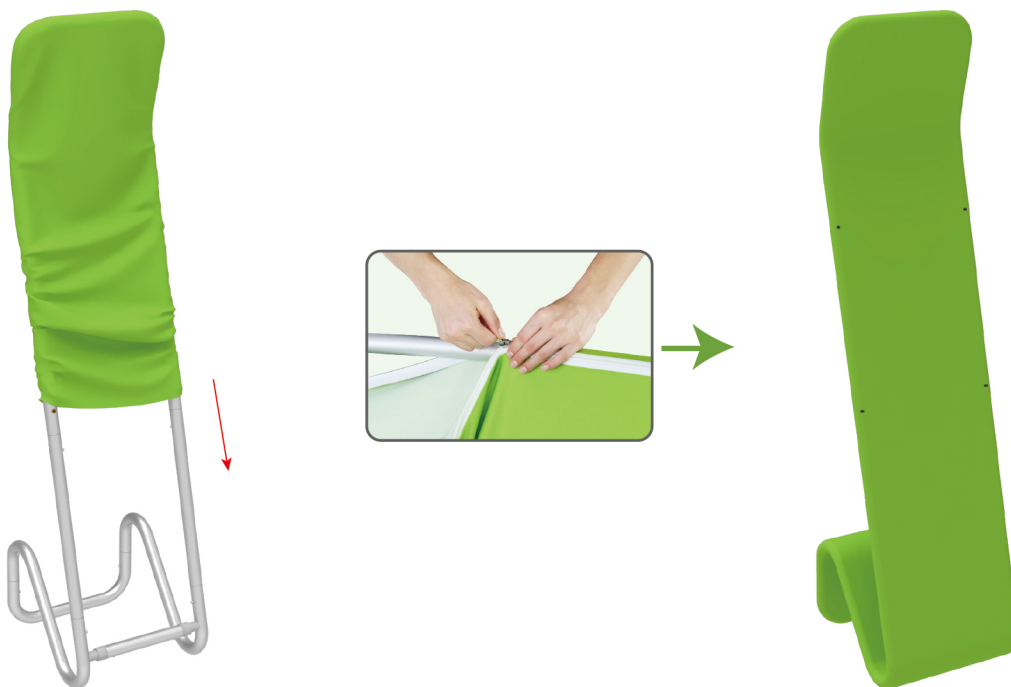
## STEP 03 To install the cross bar according to labellings



## STEPS

## STEP 04

To Wrap up the fabric banner from top to bottom and zip up.



## STEP 05

To install 2 racks by screws in position

