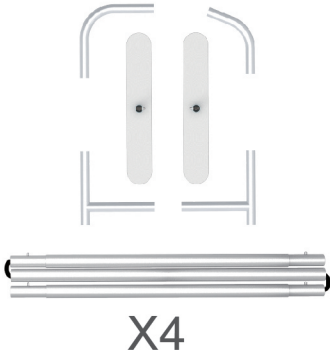


STEPS

(1) Hardware

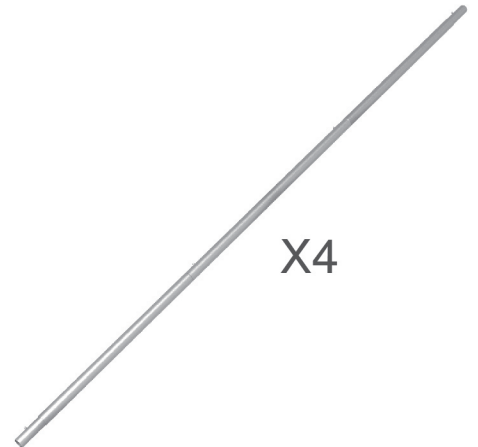
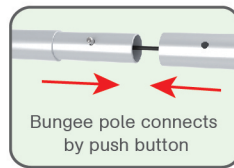


(2) Graphic printing fabric banner



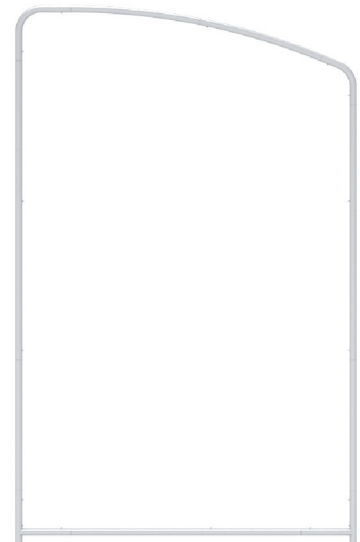
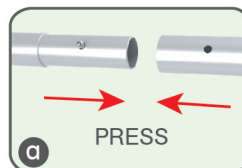
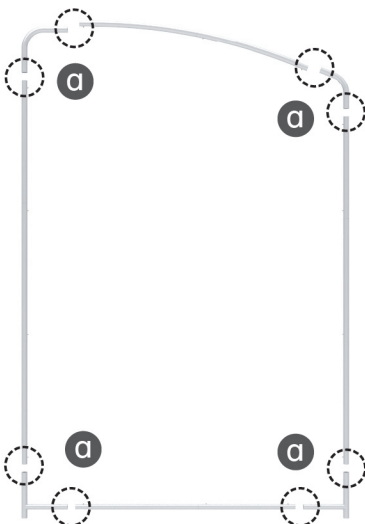
STEP 01

To connect the poles according to the labellings



STEP 02

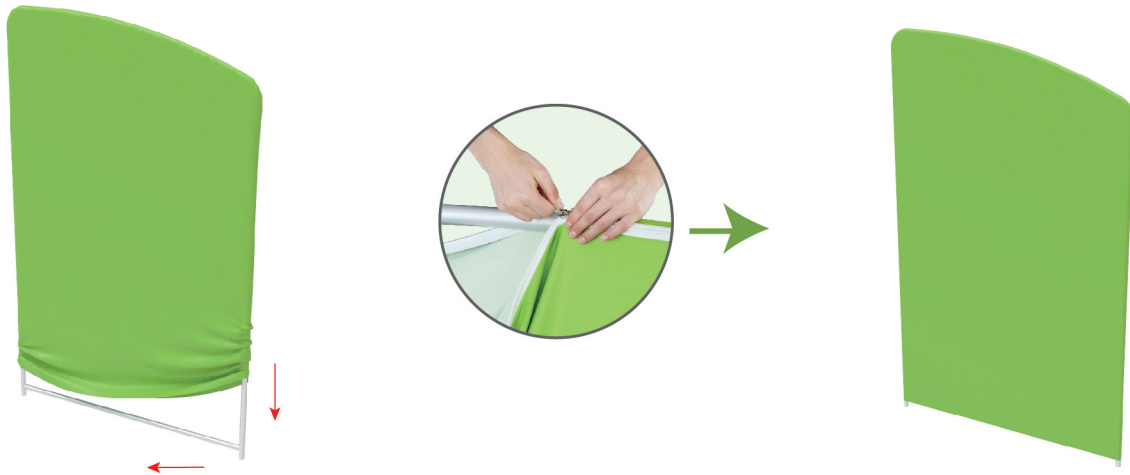
To use corner pieces to connect the poles to be display stand



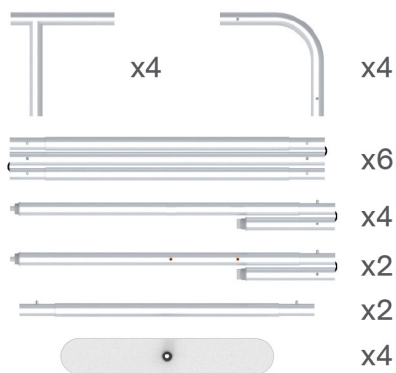
STEPS

STEP 03

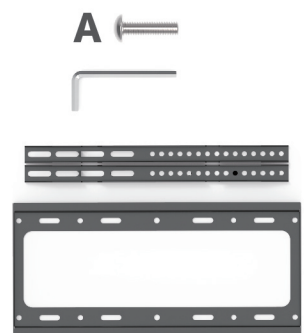
To slide the fabric banner on the frame from top and zip up at bottom



(1) Hardware

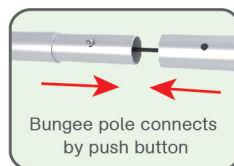


(2) Graphic printing fabric banner

(3) 4x screw A
1x laminate clamp

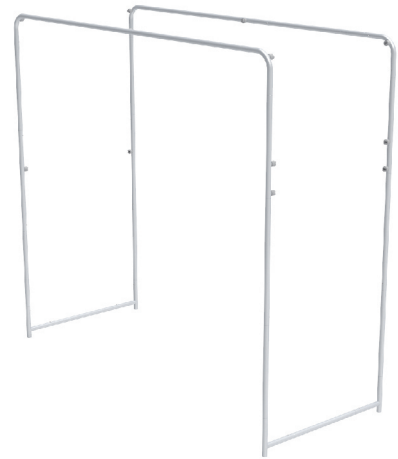
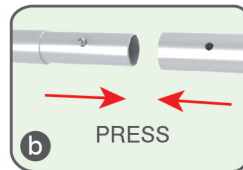
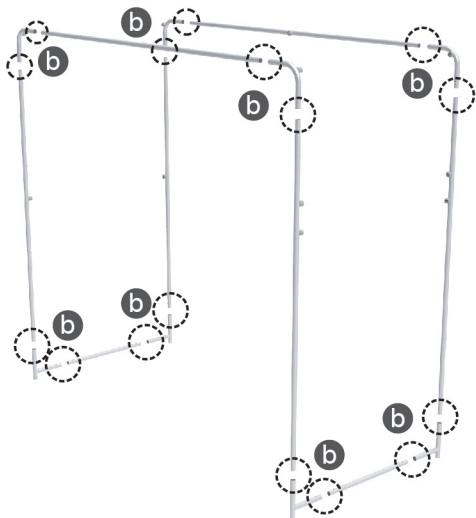
STEP 01

To connect the poles according to the labellings

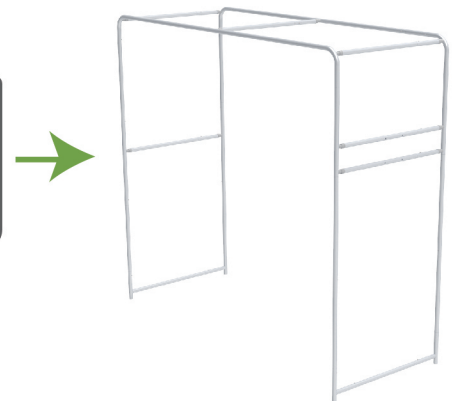
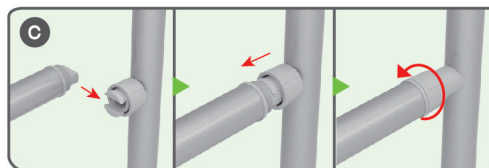
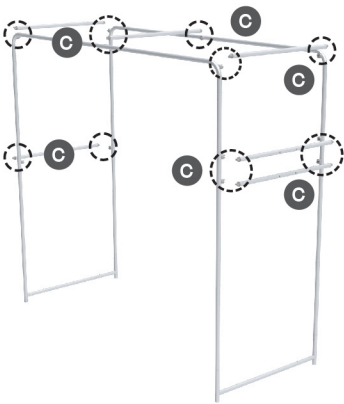


STEPS**STEP 02**

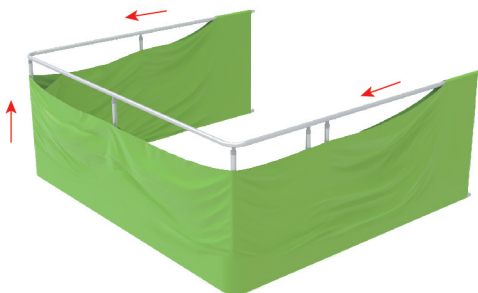
To use corner pieces to connect the poles to be display stand

**STEP 03**

To install the cross bar according to the labellings

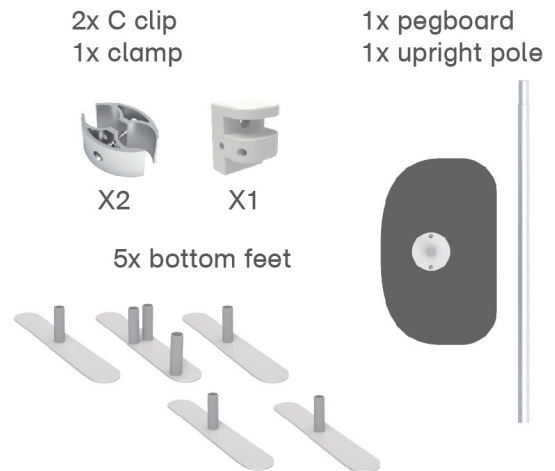
**STEP 04**

To lie down the stand and wrap the fabric banner from side to side and zip up



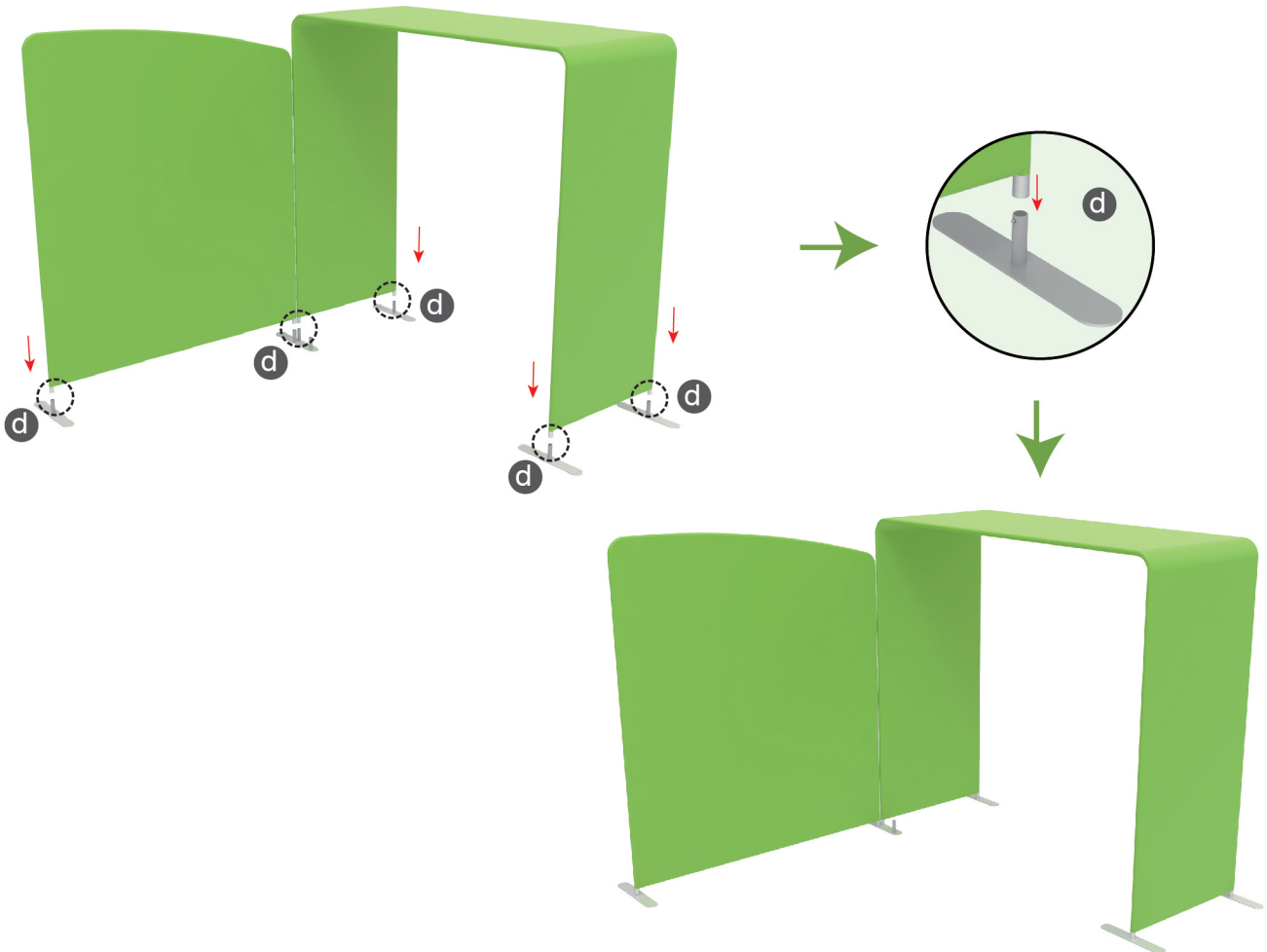
STEPS

(1) Booth Set Assembly



STEP 01

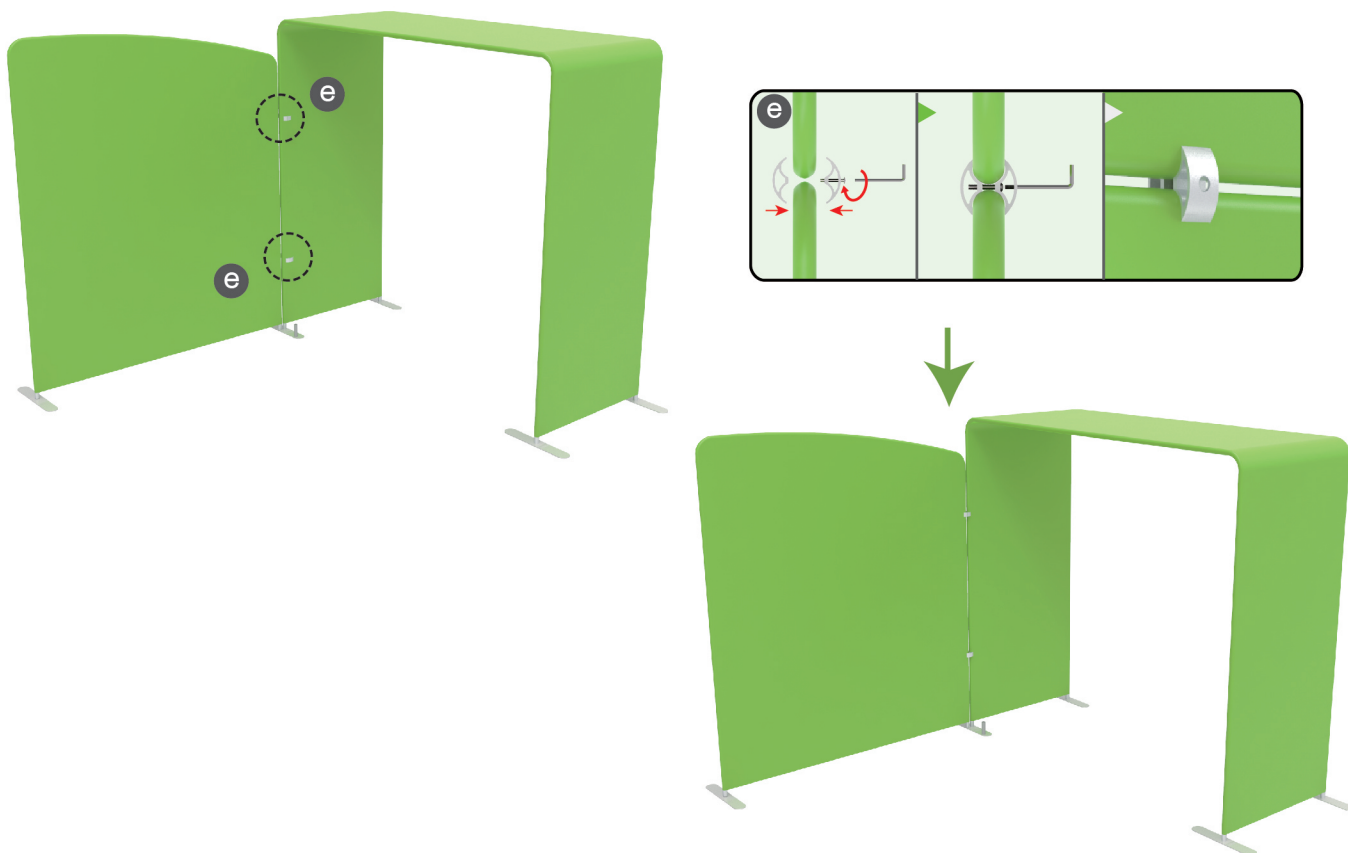
To assemble the feet in position



STEPS

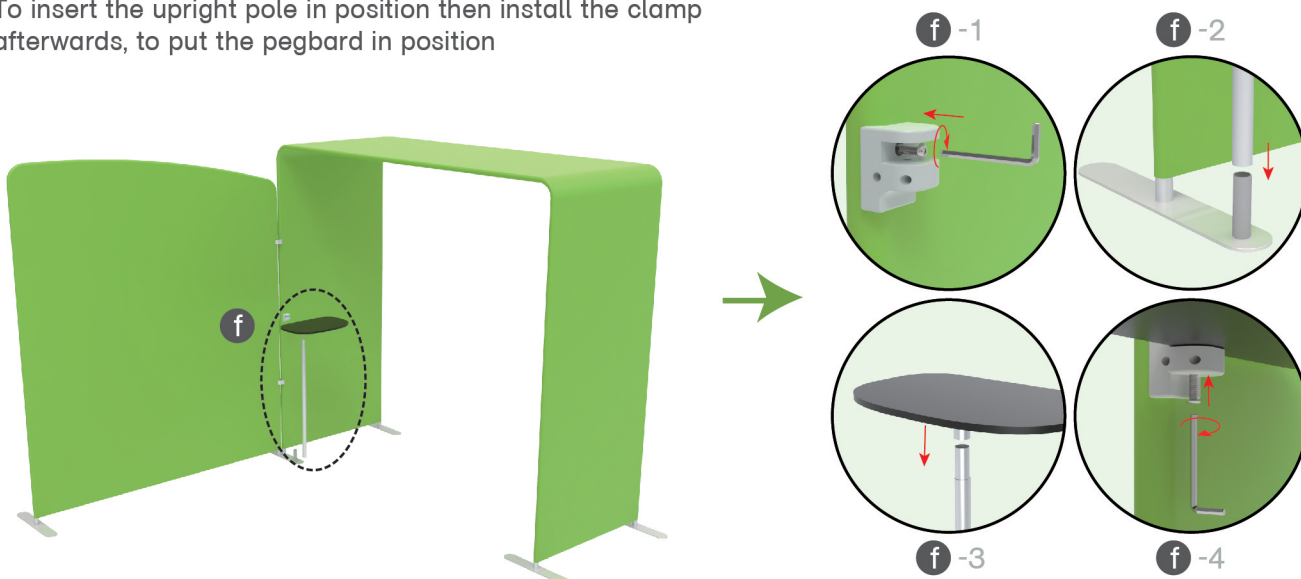
STEP 02

To use C clip to connect backwall & Arch stand perfectly



STEP 03

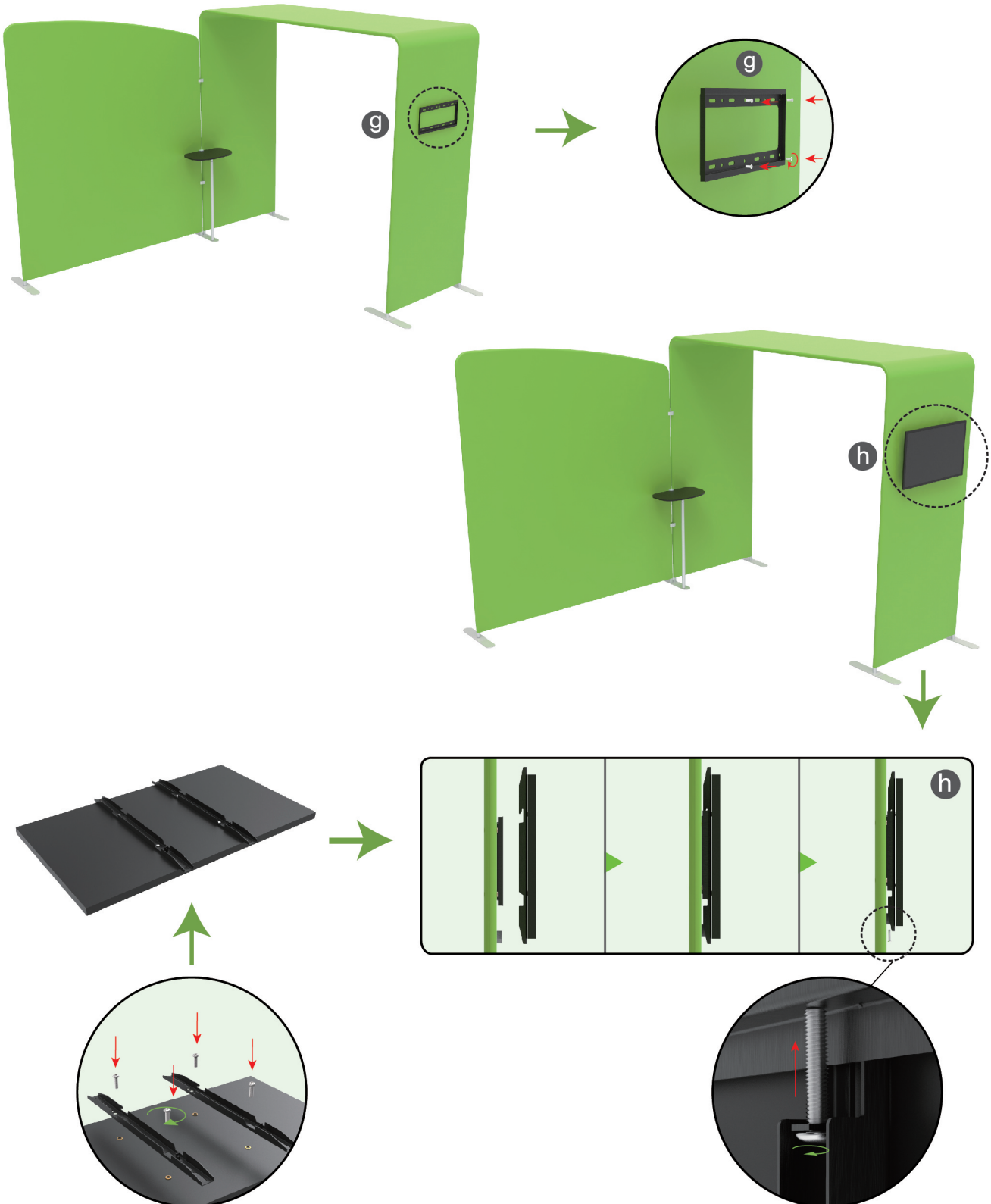
To insert the upright pole in position then install the clamp afterwards, to put the pegboard in position



STEPS

STEP 04

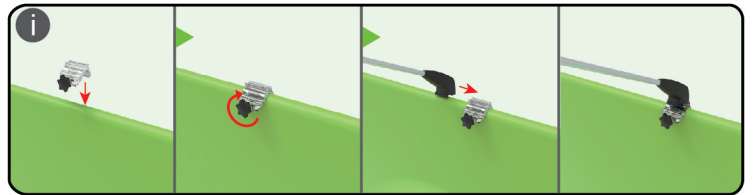
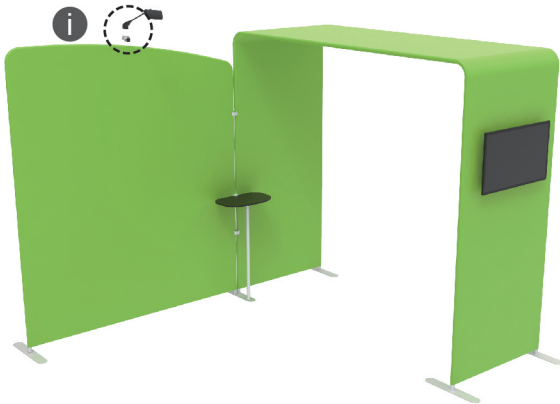
To install the TV mount in position



STEPS

STEP 05

Install LED light

LED Light X1
Light Clip X1

10X10FT-BOOTH-06