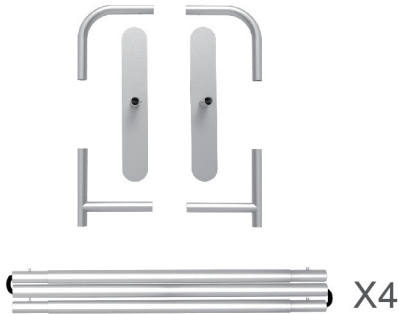


STEPS

(1) Hardware

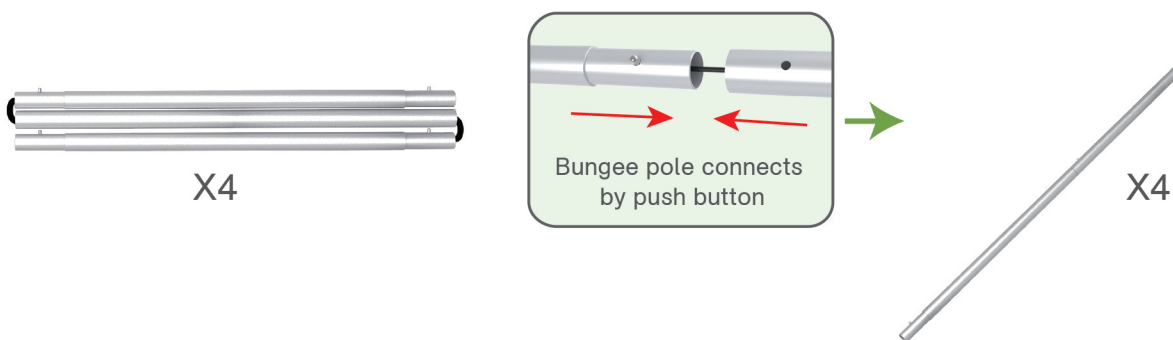


(2) Fabric Banner



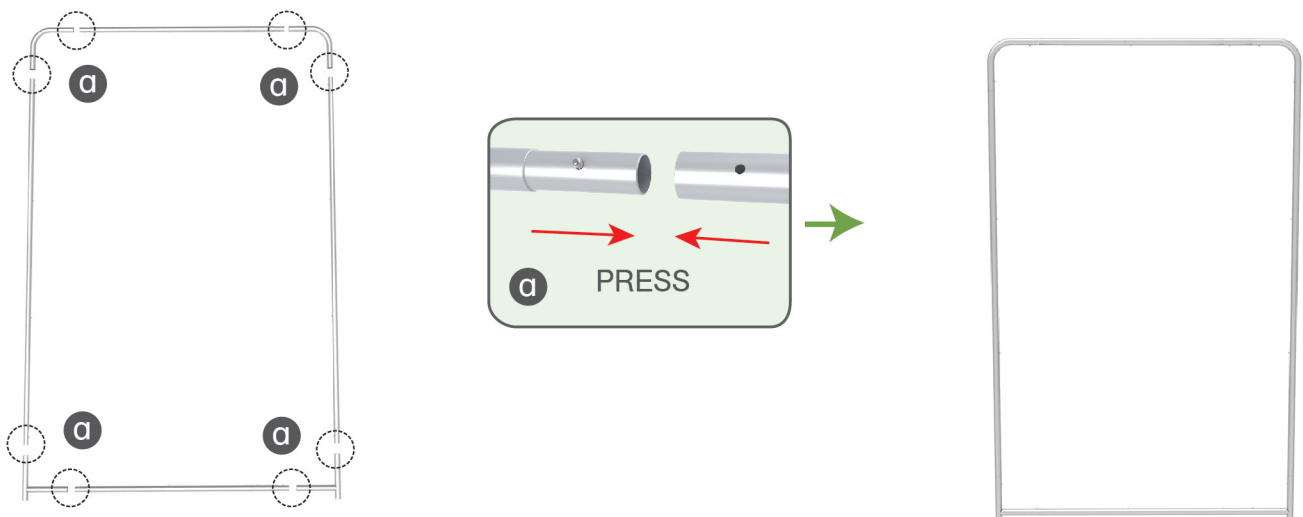
STEP 01

To connect the poles according to the labellings



STEP 02

To use corner pieces to connect the poles to be display stand

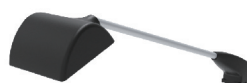


STEP 03



Same Steps for the rest back walls

| | | |
|--|--|--|
| | | |
|--|--|--|



LED Light



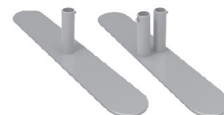
Light Clip



X4



x2



x2

x2



A



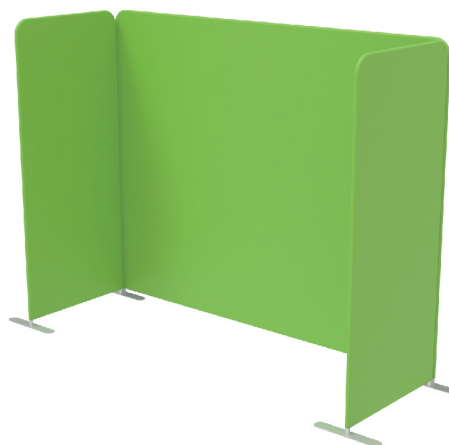
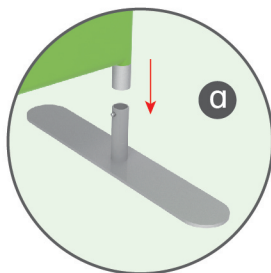
X4



x2

STEP 01

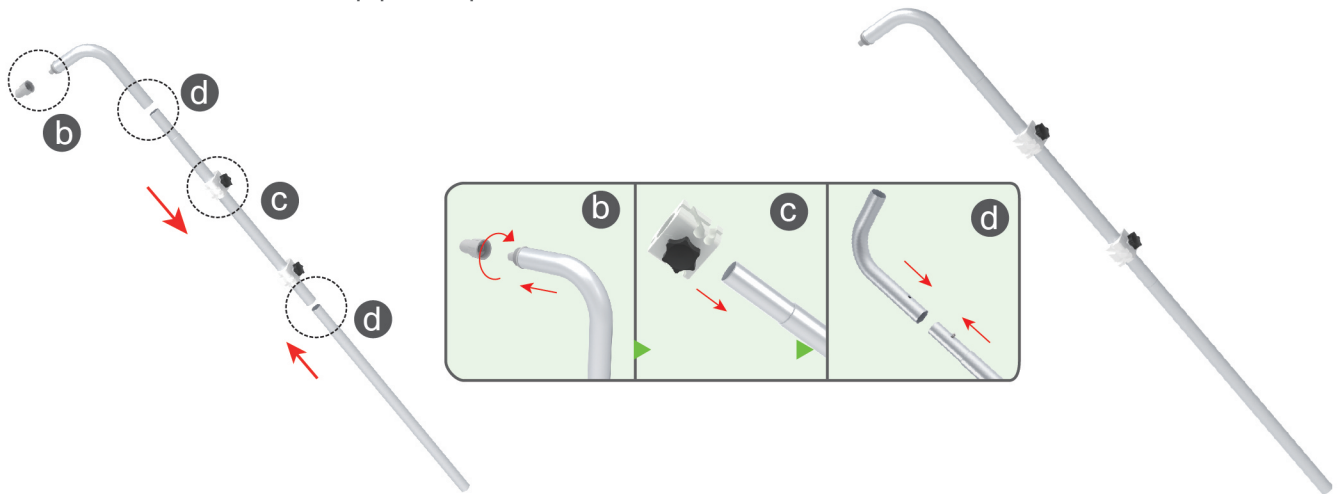
A 3D perspective view of a green, rectangular structure with rounded corners. Four circular callouts, each labeled with a lowercase 'a', are positioned around the structure. Each callout shows a cross-section of the structure's edge, revealing a white interior and a grey outer layer.



STEPS

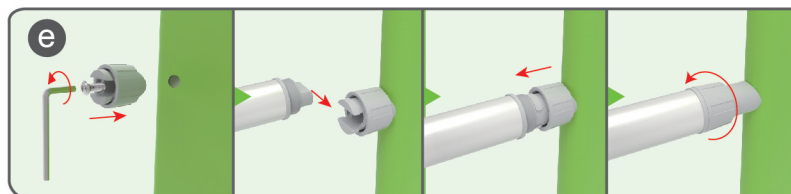
STEP 02

To disassemble the curved top from long pole and slide the clips onto pole and then assemble the curved top pole in position

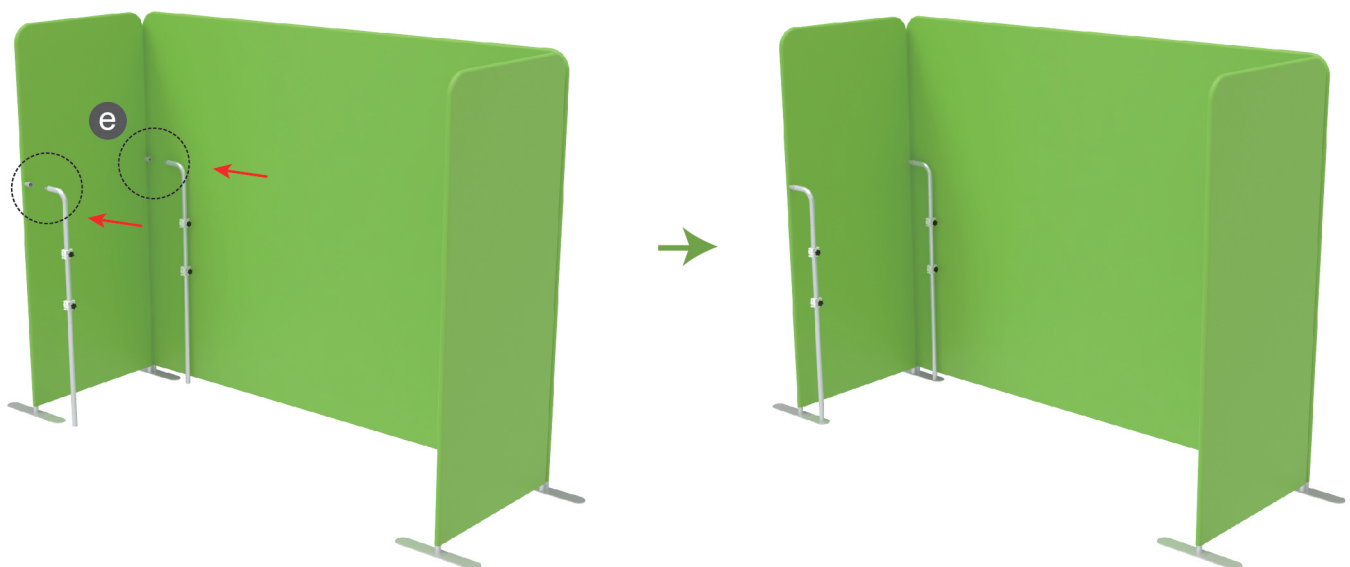


STEP 03

To install the long pole with clips set onto the side wall



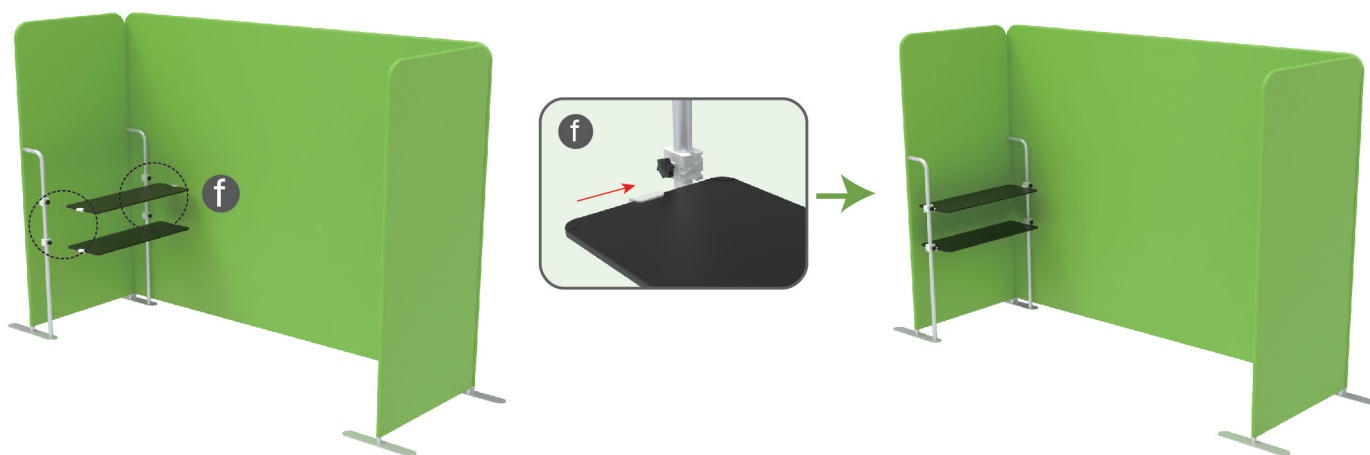
Refer to Shelves Kit manual for details



STEPS

STEP 04

To install the shelves in position and adjust the height accordingly



STEP 05

To install the C clip between the back walls to have perfect corner shape

