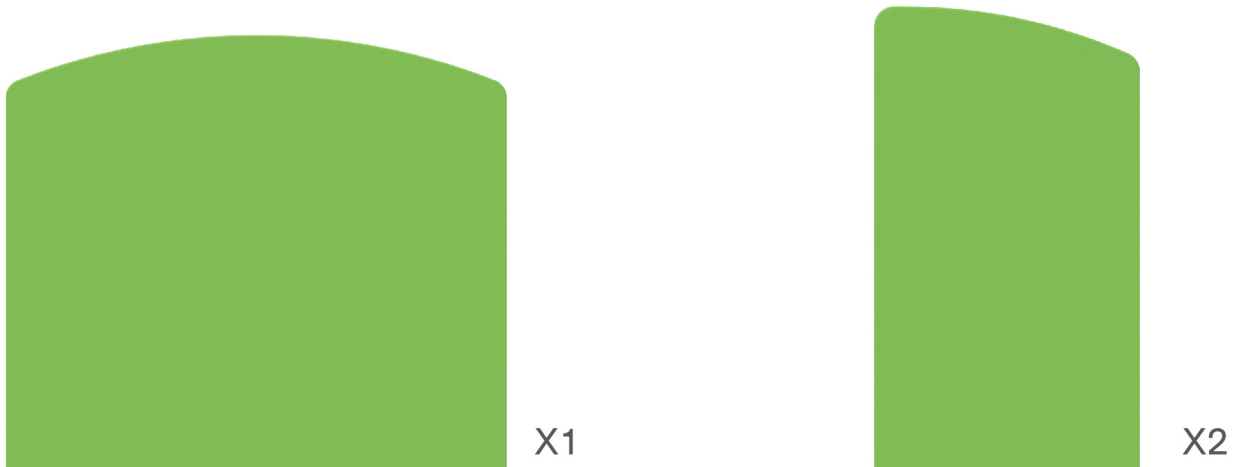


## STEPS

## (1) Hardware

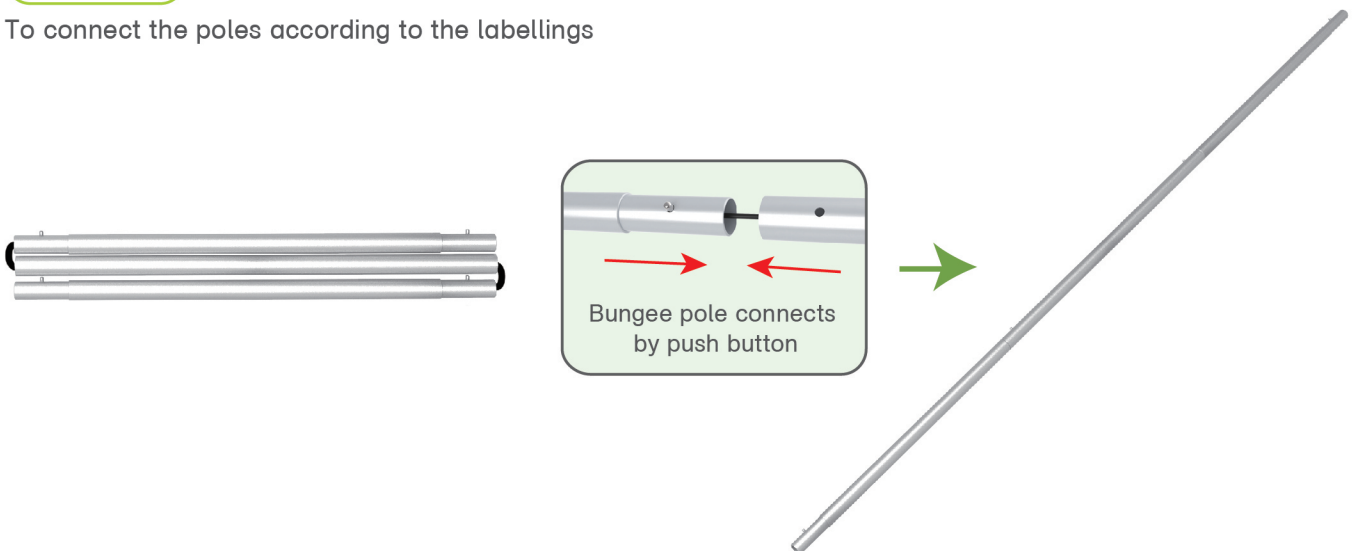


## (2) Graphic printing fabric banner



## STEP 01

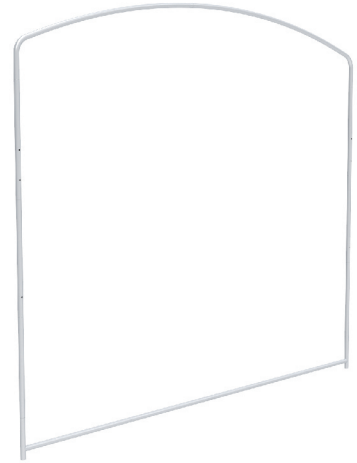
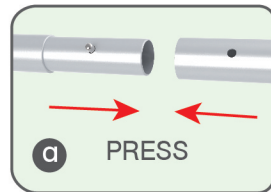
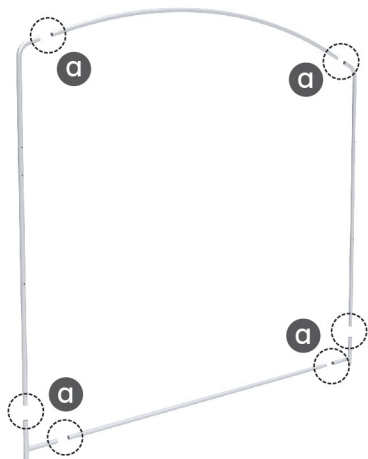
To connect the poles according to the labellings



## STEPS

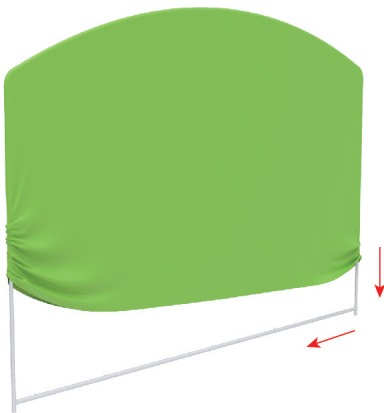
## STEP 02

To connect long poles by corner pieces according to the labellings



## STEP 03

To slide the fabric banner on the frame from top and zip up at bottom

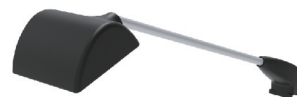


Same steps for rest back walls

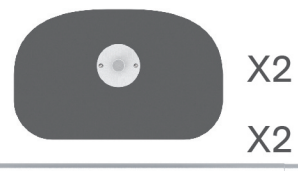
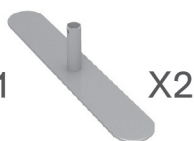
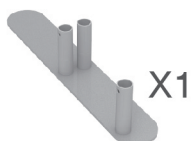
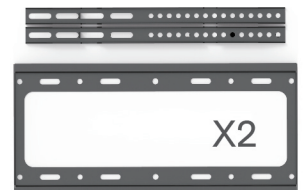
## Booth Set Assembly



LED Light



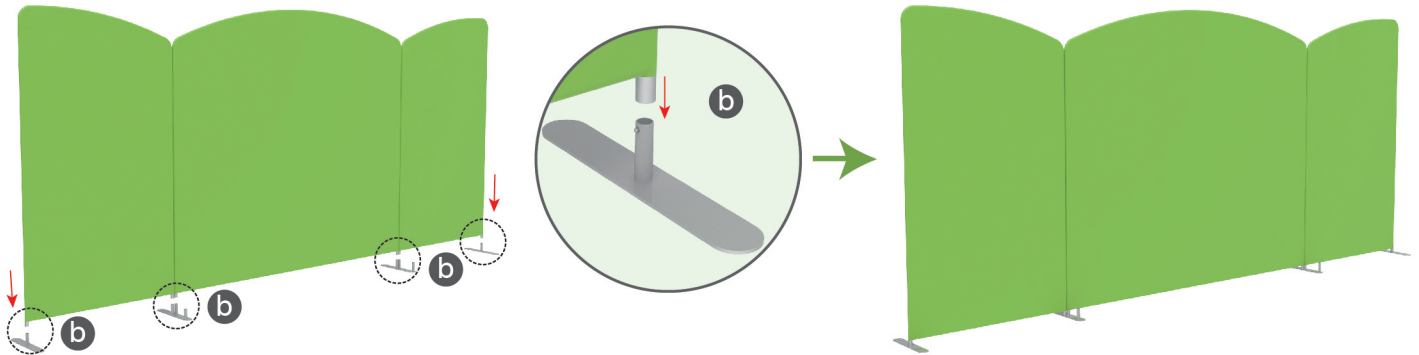
Light Clips



## STEPS

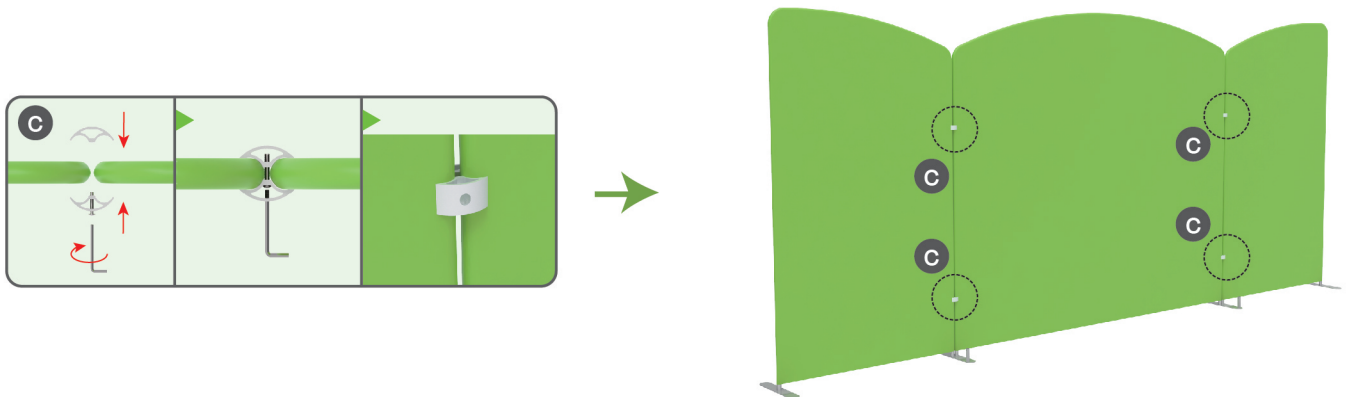
## STEP 01

To install the “double-head” feet in position to make backwalls stand together



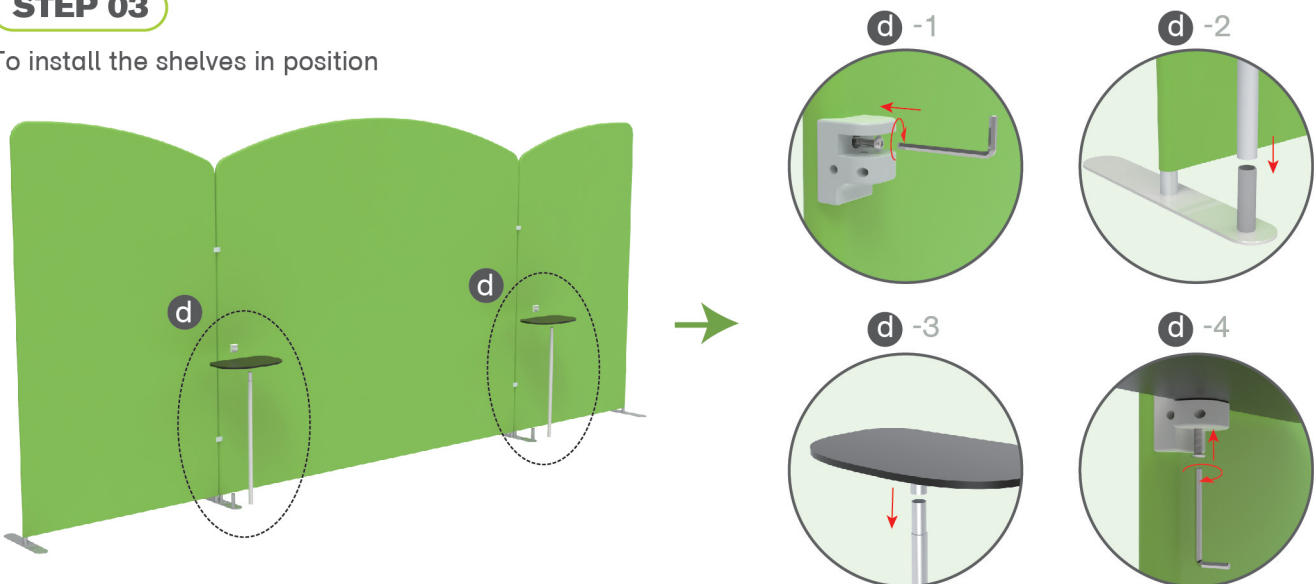
## STEP 02

To put the C clip into the gap between backwalls and fasten by screws



## STEP 03

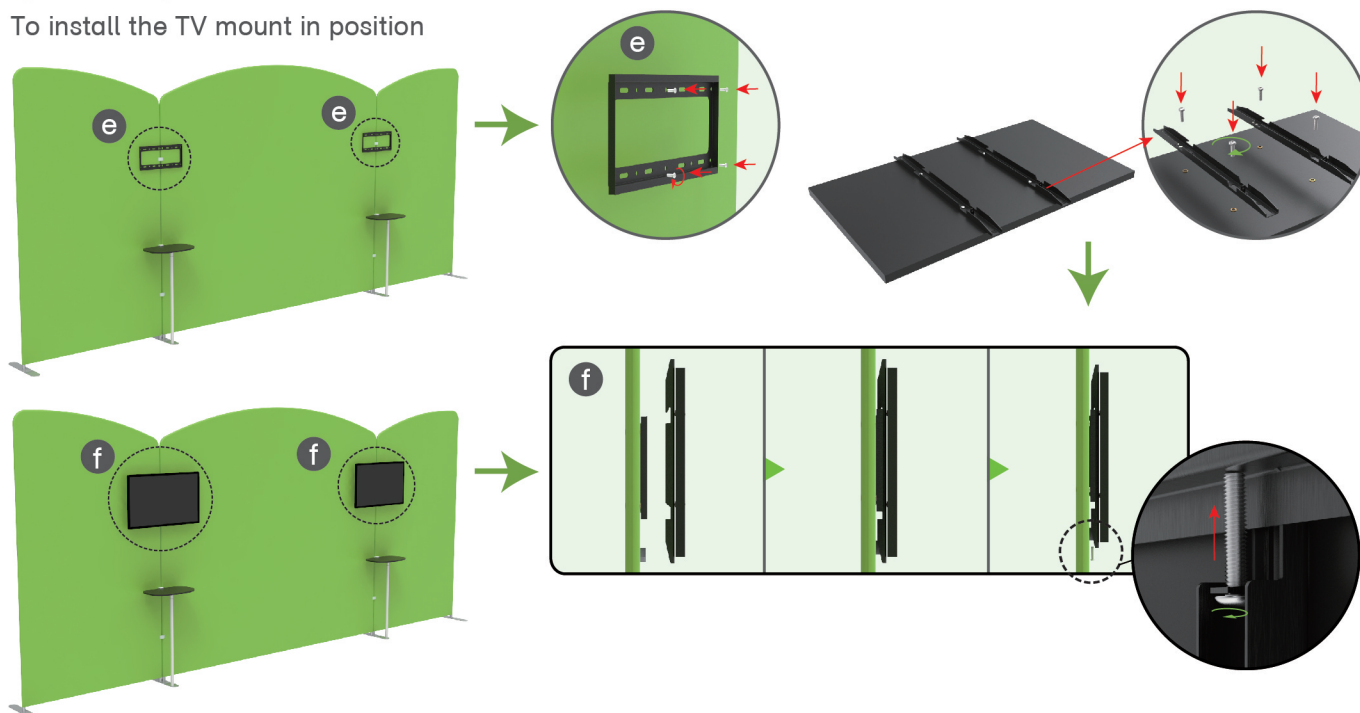
To install the shelves in position



## STEPS

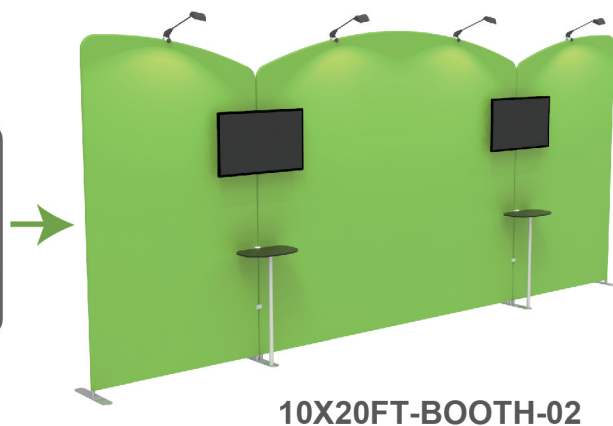
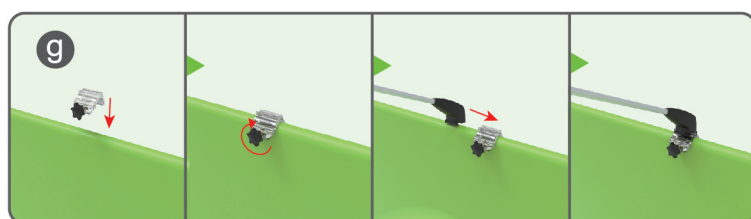
## STEP 04

To install the TV mount in position



## STEP 05

Install LED light



Same Steps for Following Booth

