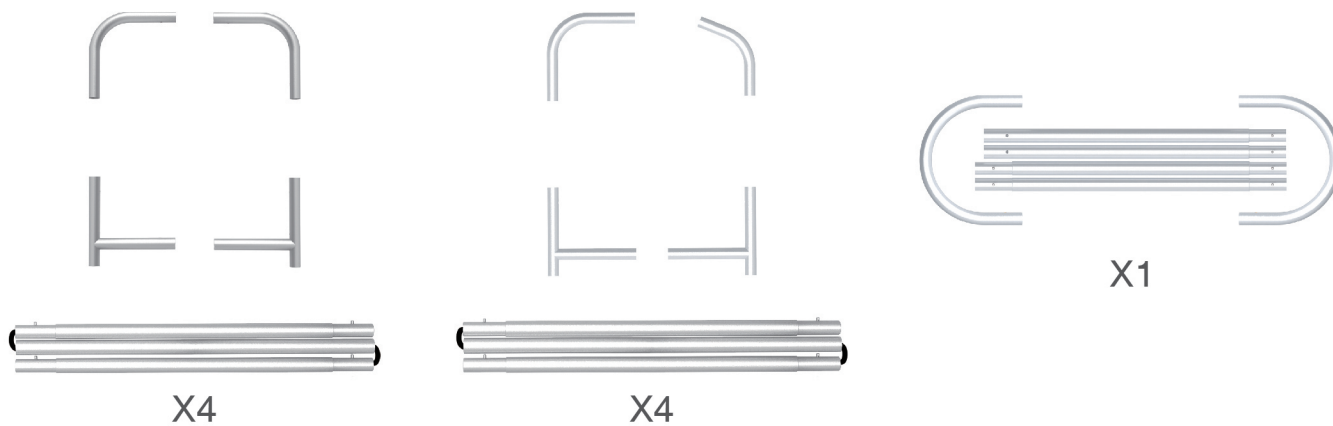


STEPS

(1) Hardware

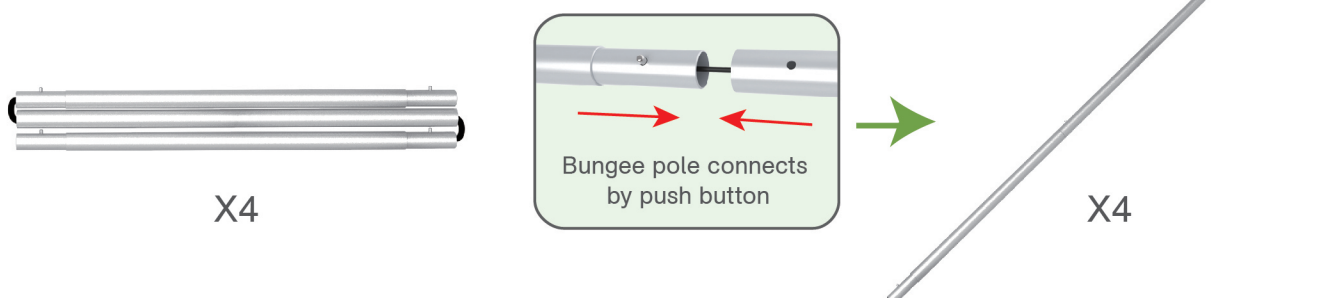


(2) Graphic printing fabric banner



STEP 01

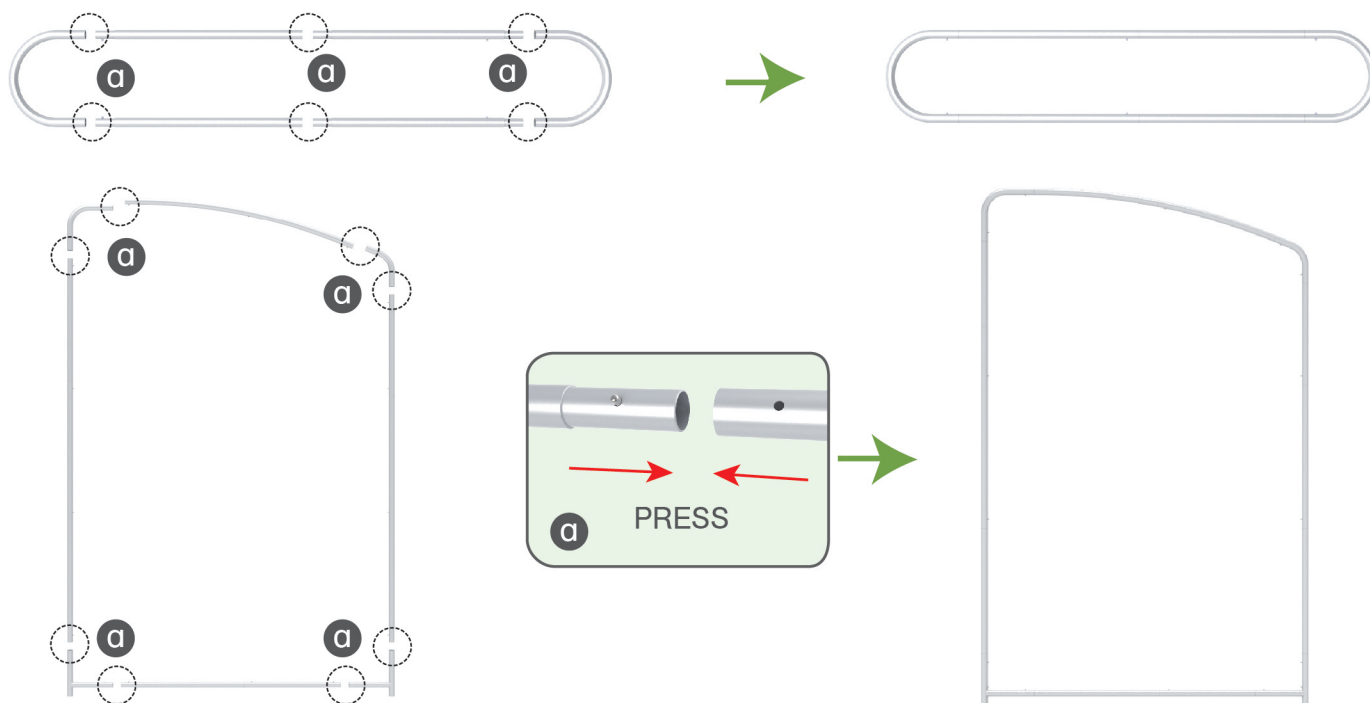
To connect the poles according to the labellings



STEPS

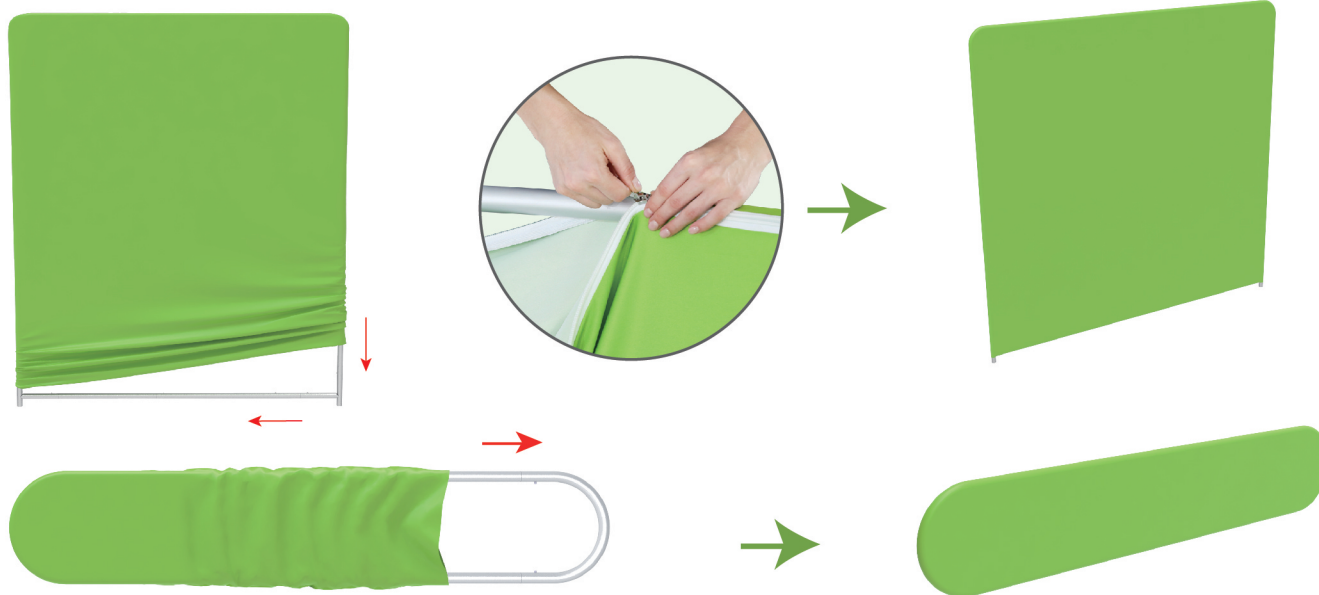
STEP 02

To connect long poles by corner pieces according to the labellings



STEP 03

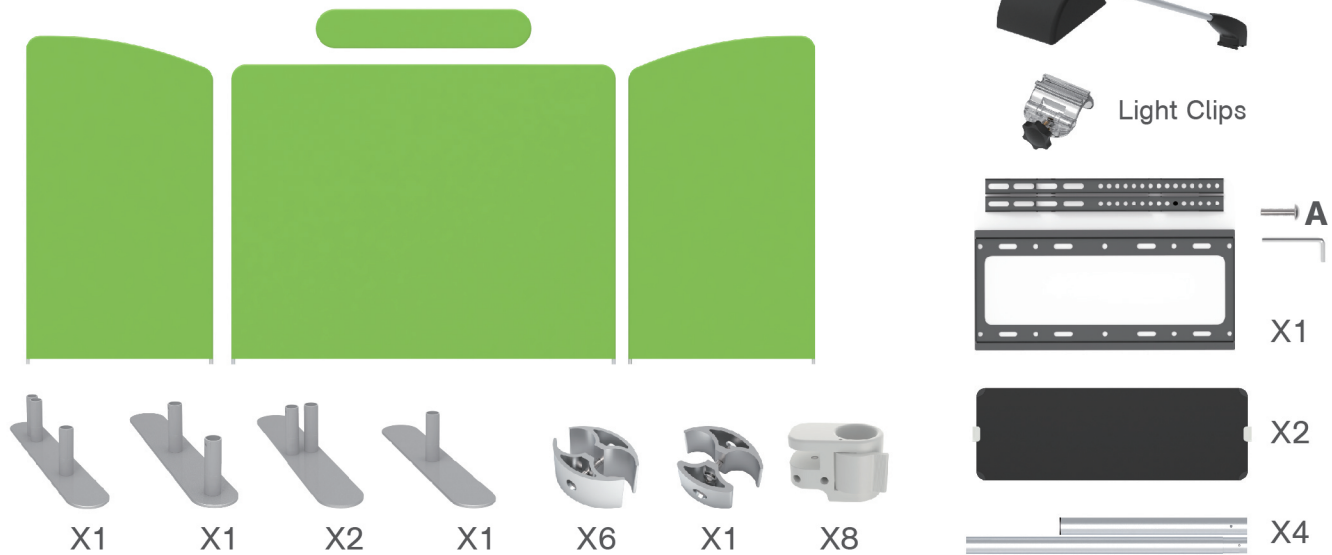
To slide the fabric banner on the frame from top and zip up at bottom



Same steps for rest back walls

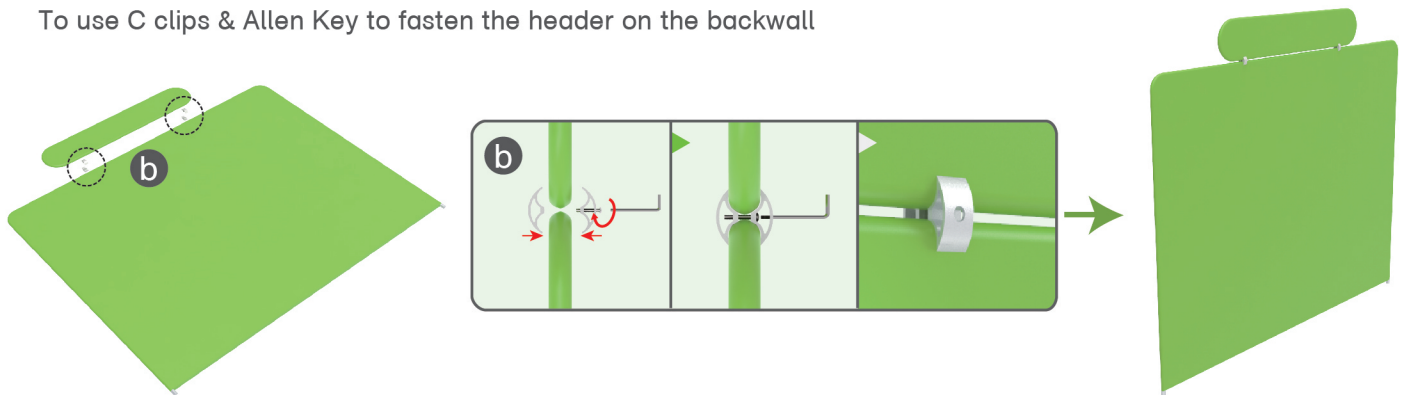
STEPS

Booth Set Assembly



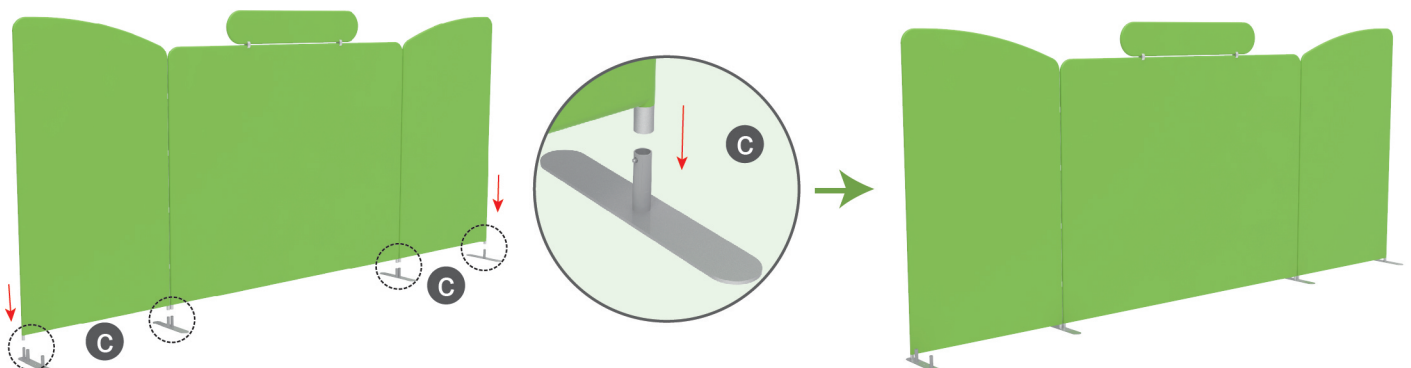
STEP 01

To use C clips & Allen Key to fasten the header on the backwall



STEP 02

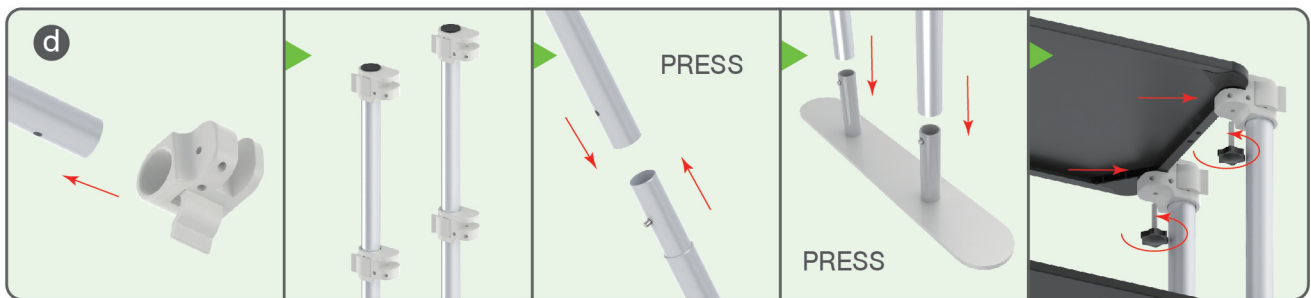
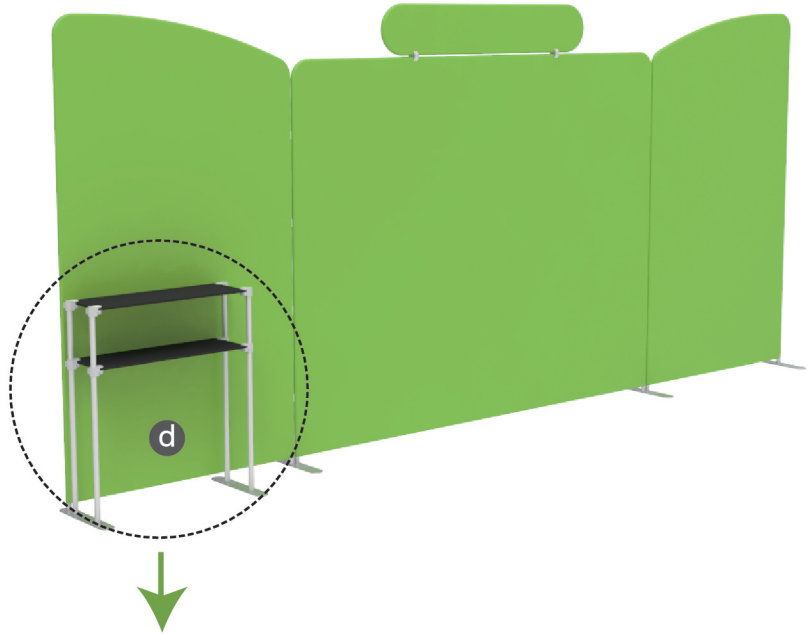
To install the "double-head" feet in position to make backwalls stand together



STEPS

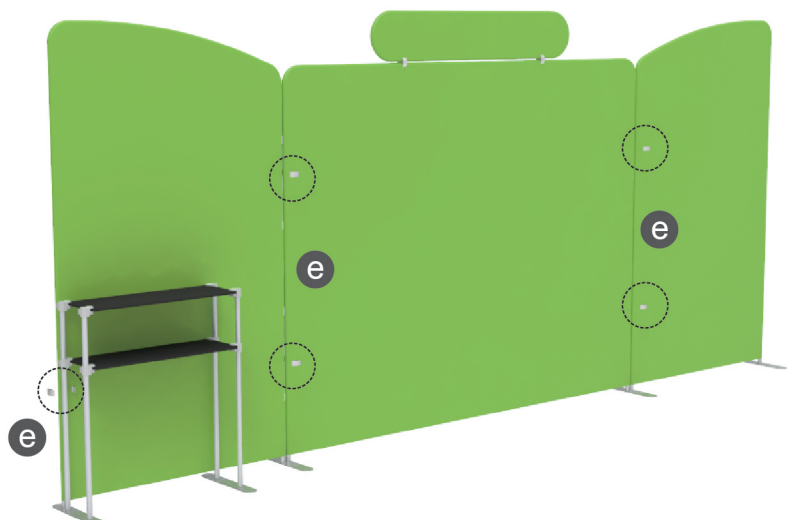
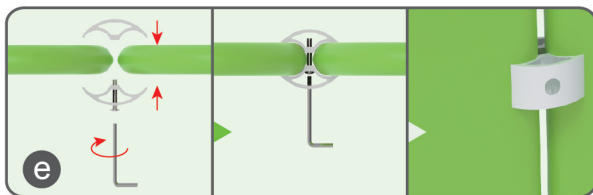
STEP 03

To install the shelves in position



STEP 04

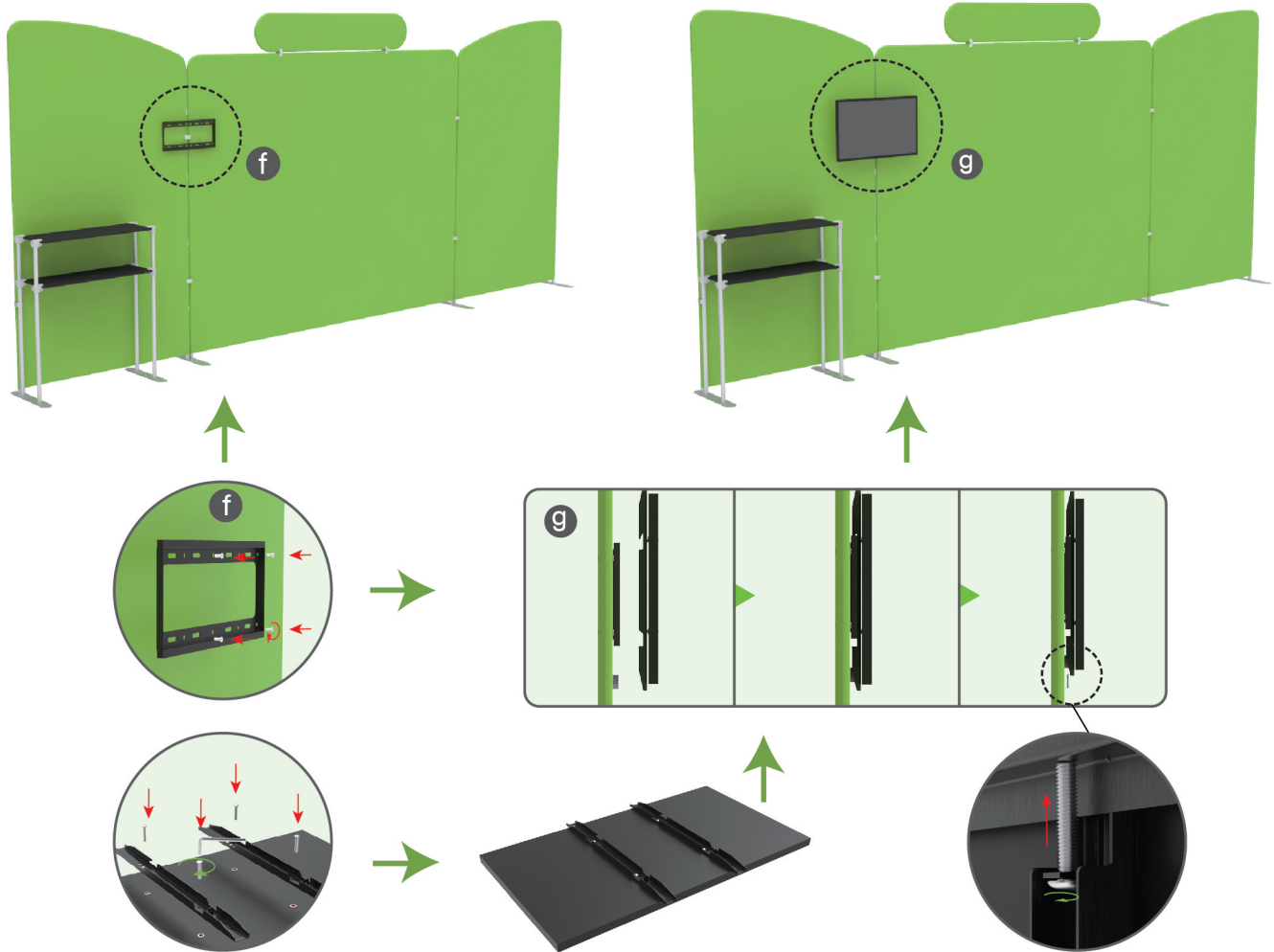
To put the C clips into the gap between backwalls and fasten by screws



STEPS

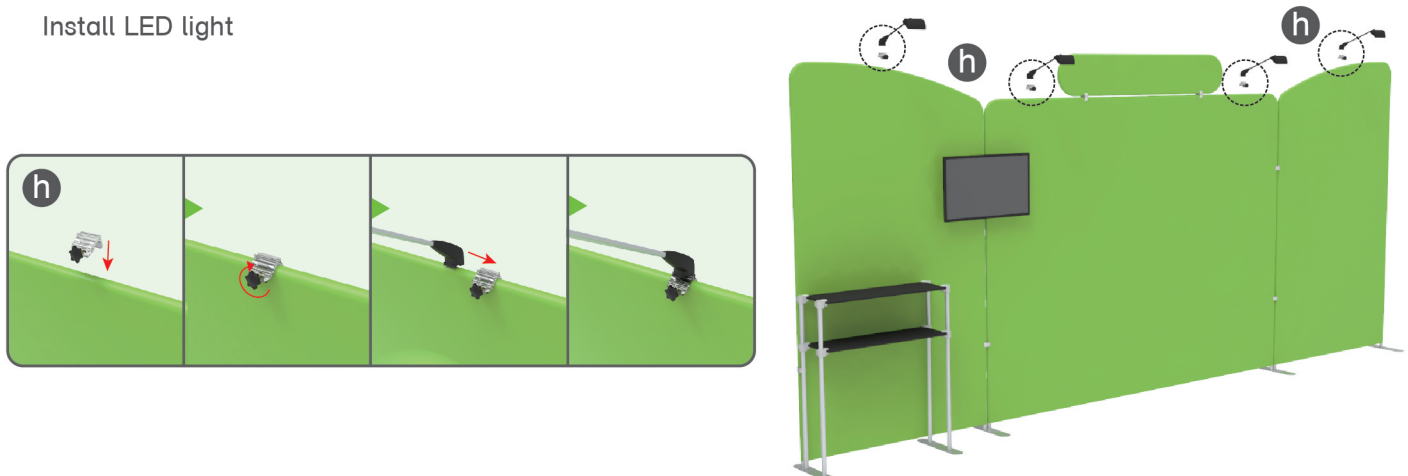
STEP 05

To install the TV mount in position



STEP 06

Install LED light



STEPS

Same Steps for Following Booths



10X20FT-BOOTH-H



10X20FT-BOOTH-K