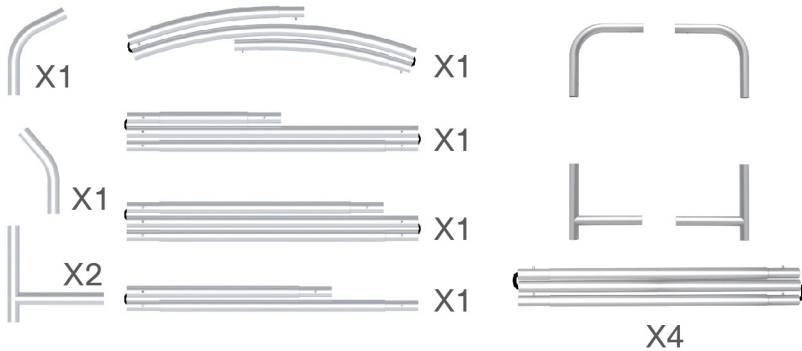


## STEPS

## (1) Hardware

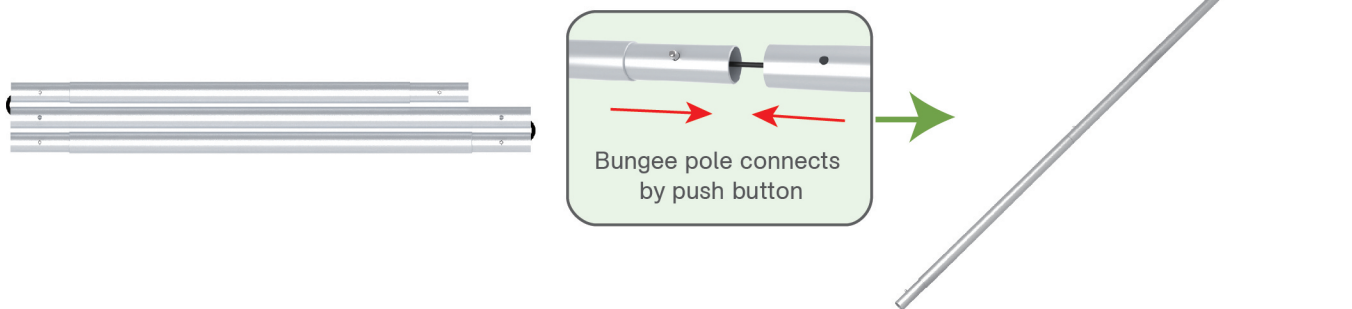


## (2) Graphic printing fabric banner



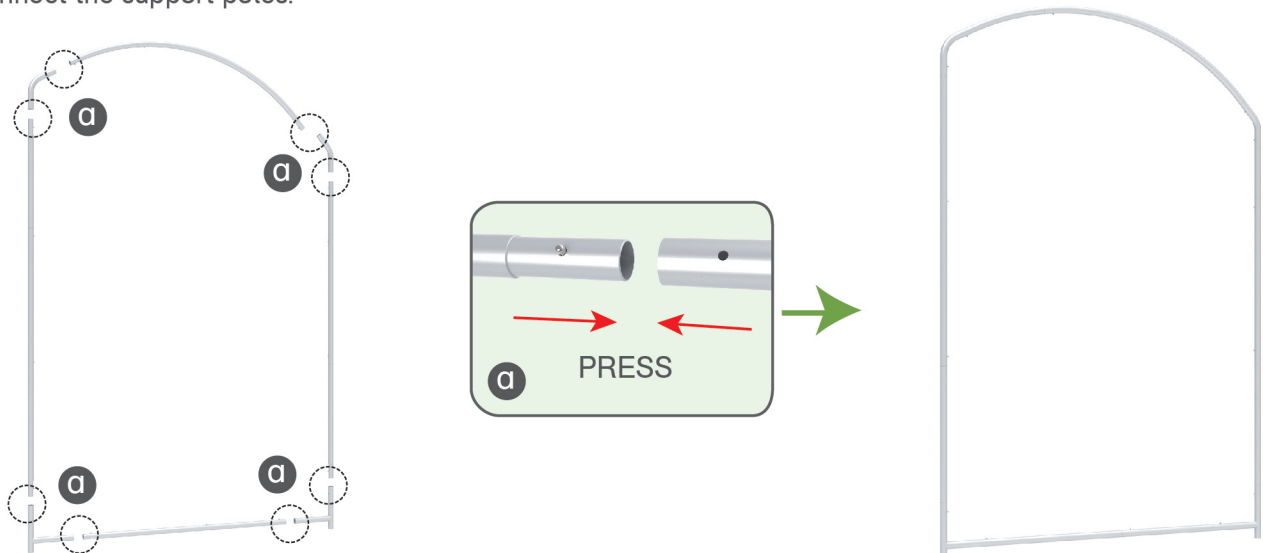
## STEP 01

To connect the poles according to the labellings



## STEP 02

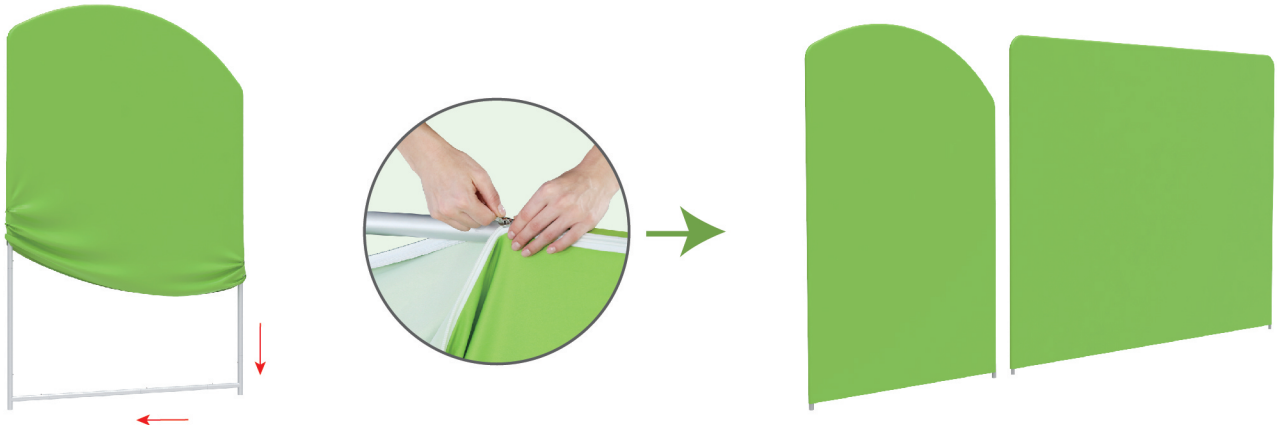
Connect the support poles.



## STEPS

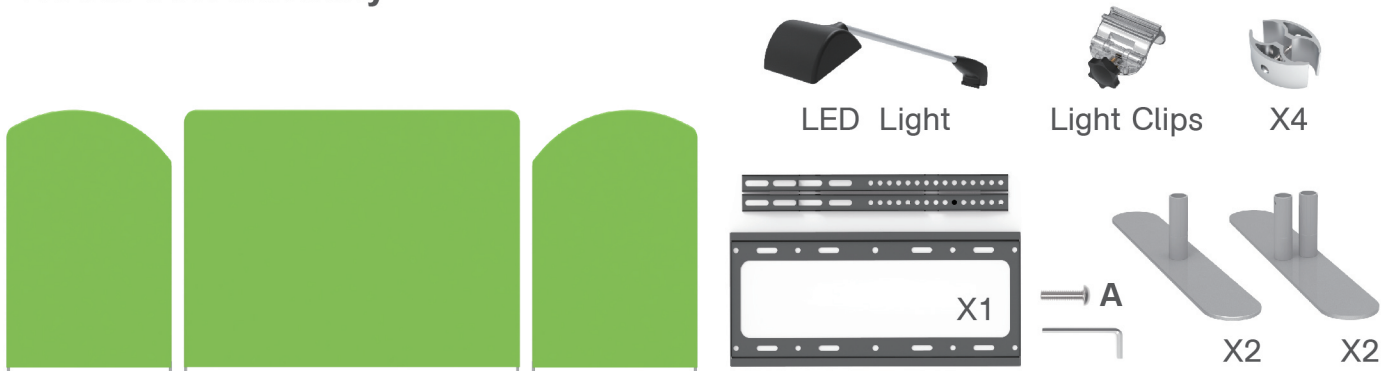
## STEP 03

To slide the fabric banner on the frame from top and zip up at bottom



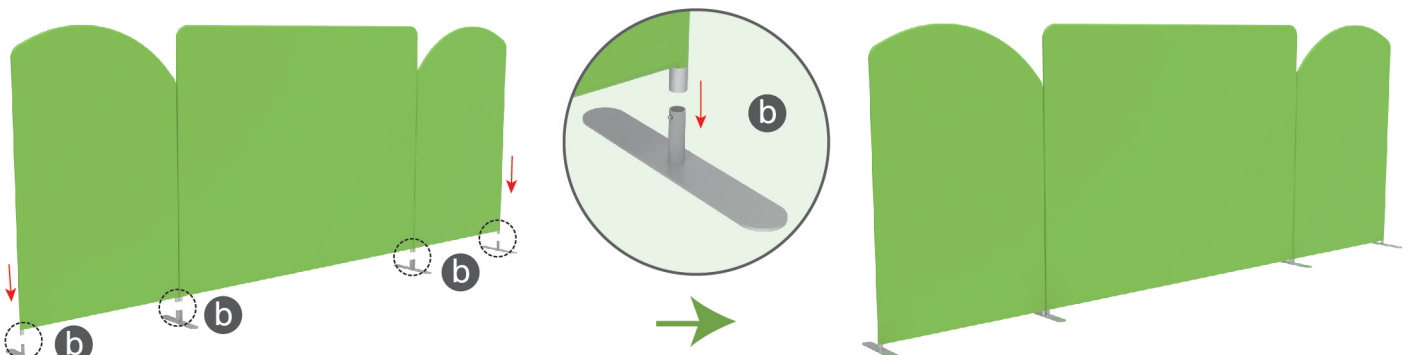
Same steps for rest back walls

## Booth Set Assembly



## STEP 01

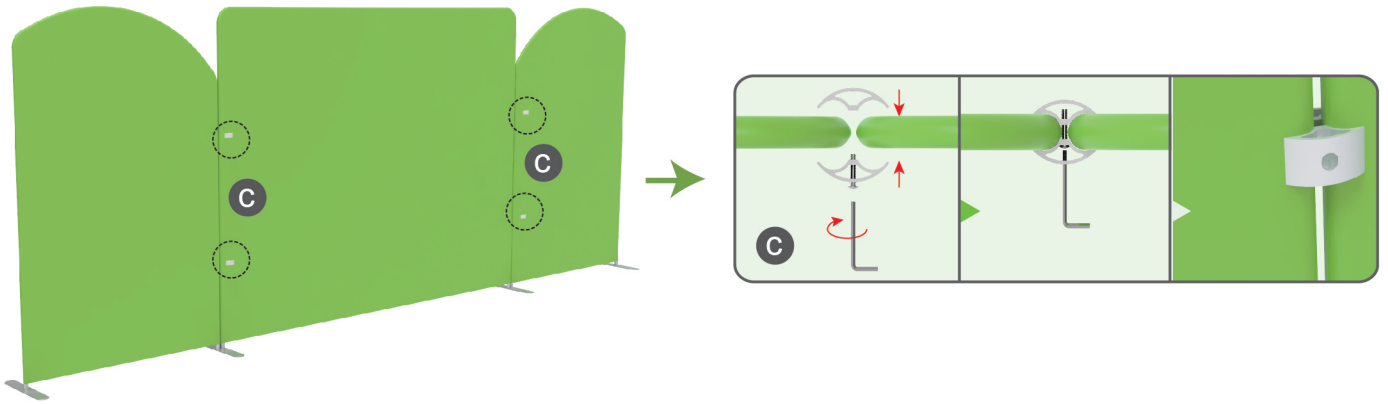
To assemble the stand feet in position



## STEPS

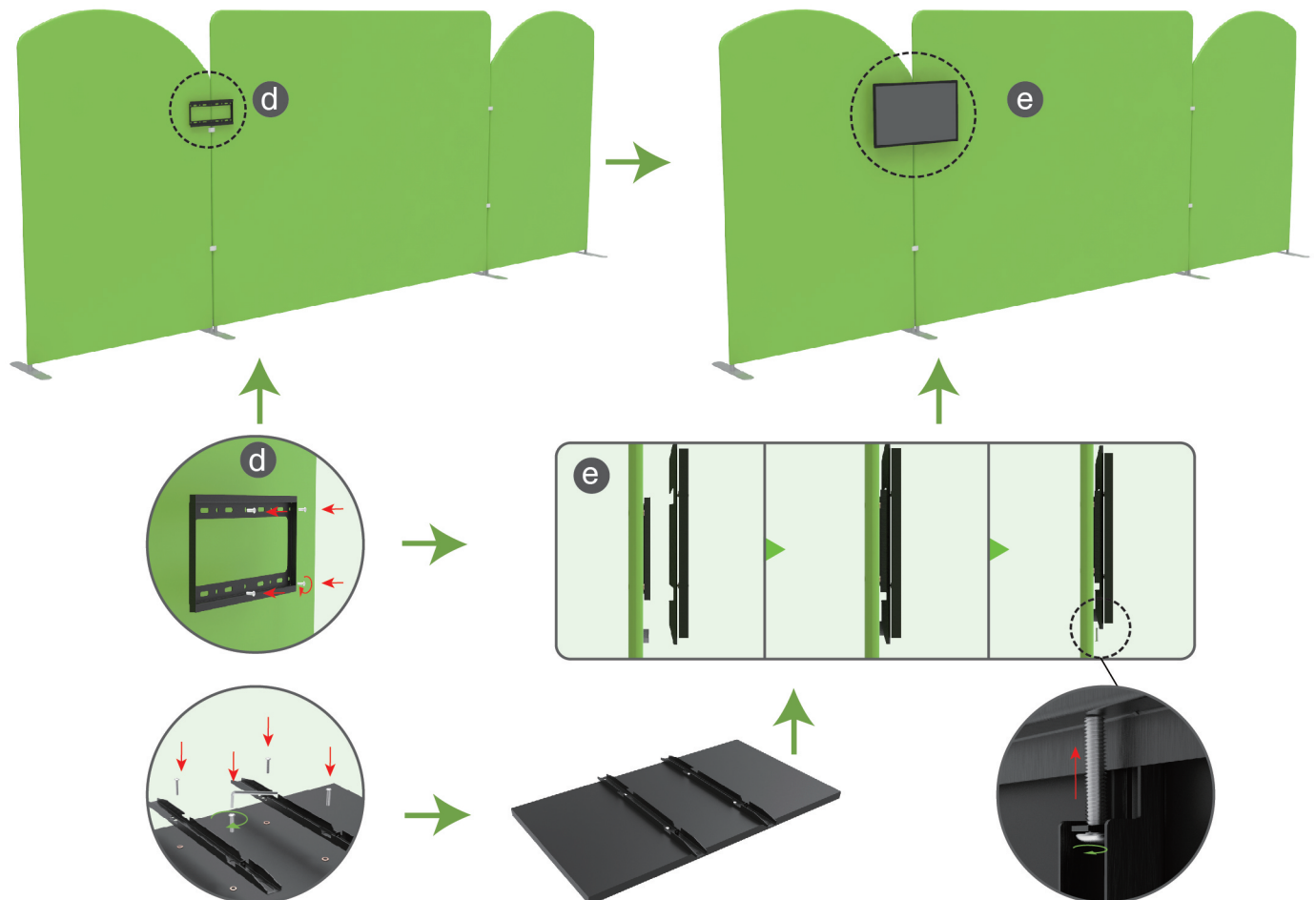
## STEP 02

To use C clips to connect 2 display stands perfectly



## STEP 03

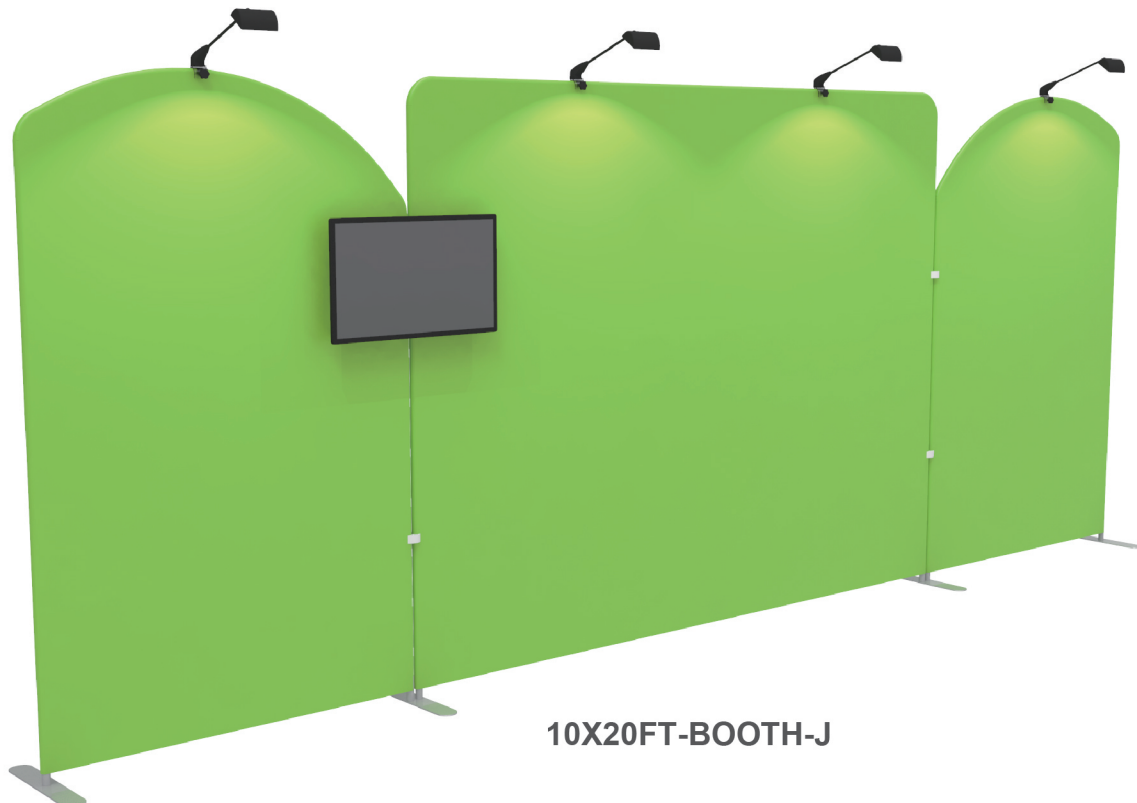
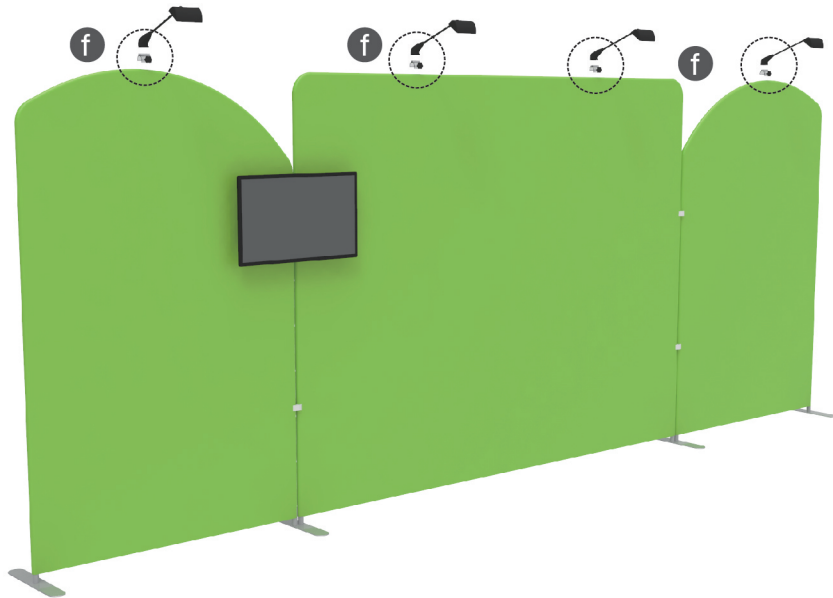
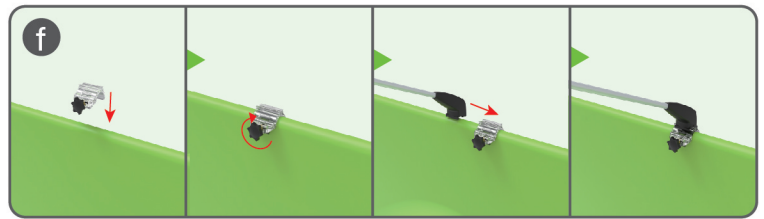
To install the TV mount in position



## STEPS

## STEP 04

Install LED light



10X20FT-BOOTH-J